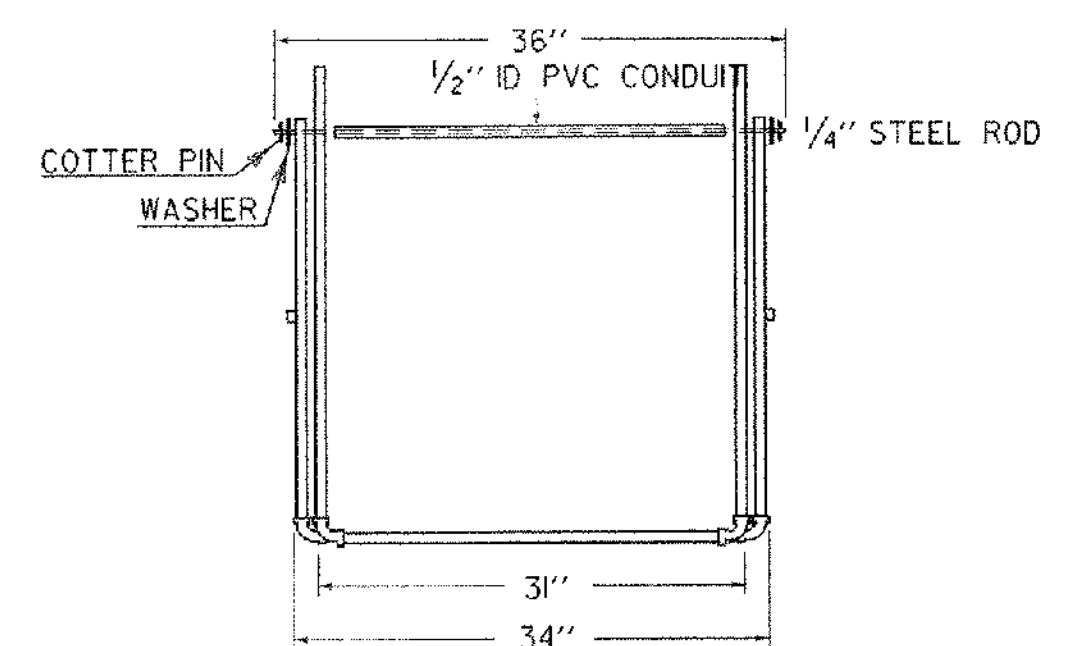
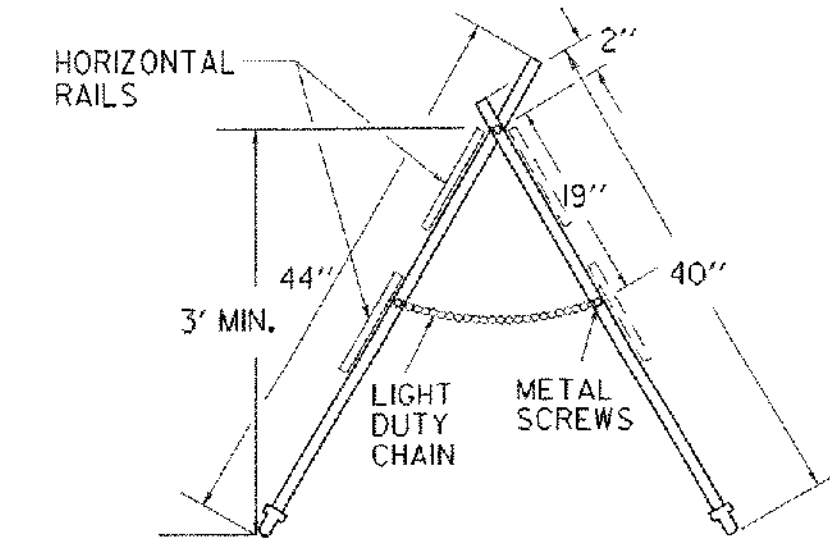


**SIDE VIEW
TYPE III BARRICADE**

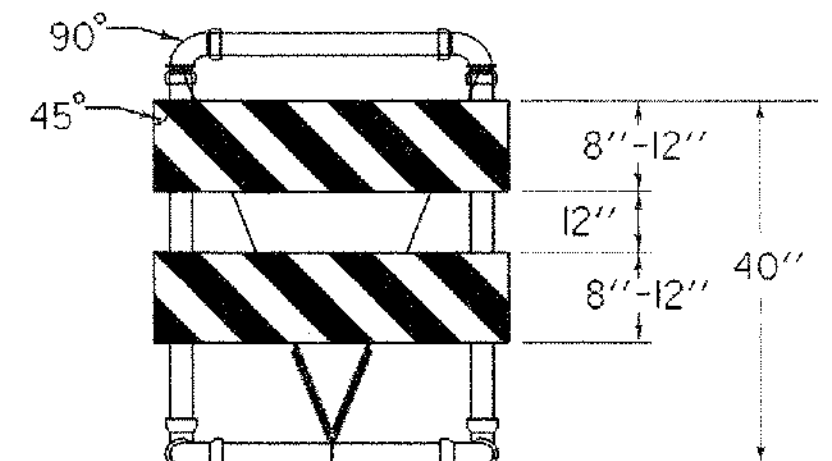
**FRONT VIEW
TYPE III BARRICADE**

- MATERIALS FOR TYPE I AND II BARRICADES**
- 20' - 1" PVC
 - 4 - 1" PVC 90° ELBOWS
 - 30" - 1/2" ID THINWALL PVC CONDUIT
 - 36" - 1/4" STEEL ROD
 - 4 - 1" WASHERS
 - 24" - LIGHT DUTY CHAIN
 - 1/2" - #14 PAN HEAD METAL SCREWS (AS REQUIRED)
 - 2 - 3/4" COTTER PINS
 - 2 OR 4 - 8" OR 12" X 36" X 0.025" BARRICADE RAILS (AS REQUIRED)

- MATERIALS FOR TYPE III BARRICADES**
- 30 LF - 3" I.D. PVC PIPE
 - 6 - 3" 90° ELBOWS
 - 2 - 3" TEES
 - 4 - 3" WYES
 - 3 - 8" OR 12" X 48" X 0.025" BARRICADE RAILS (IF ASSEMBLY IS NOT CEMENTED)
 - 2 - 5/8" X 11" #8 SPRING
 - 12 - 1" #14 PAN HEAD METAL SCREWS (IF ASSEMBLY IS NOT CEMENTED)
 - 15 LF - #14 BLACK ANNEALED TIE WIRE (IF ASSEMBLY IS NOT CEMENTED)

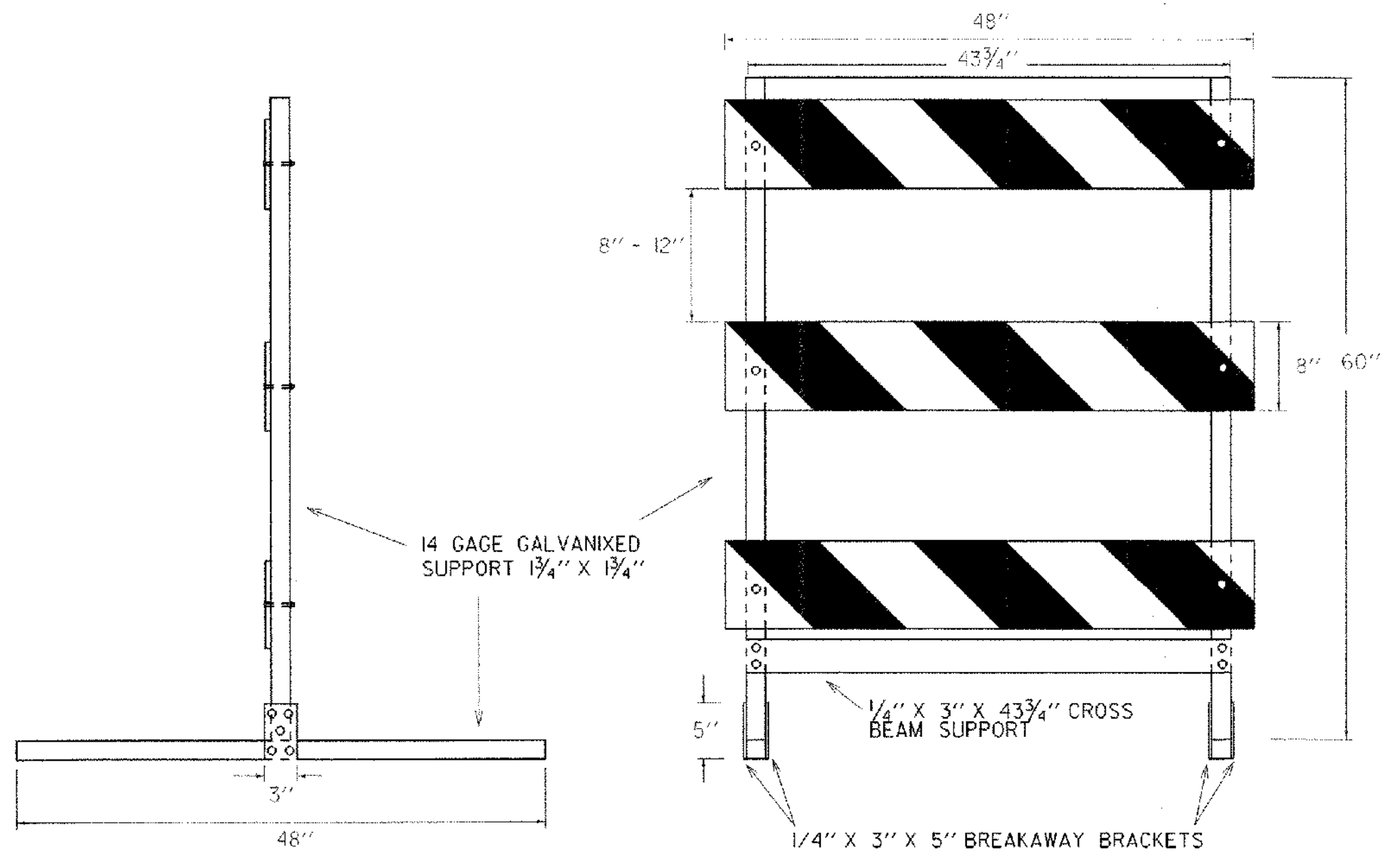


TYPE I AND TYPE II BARRICADE

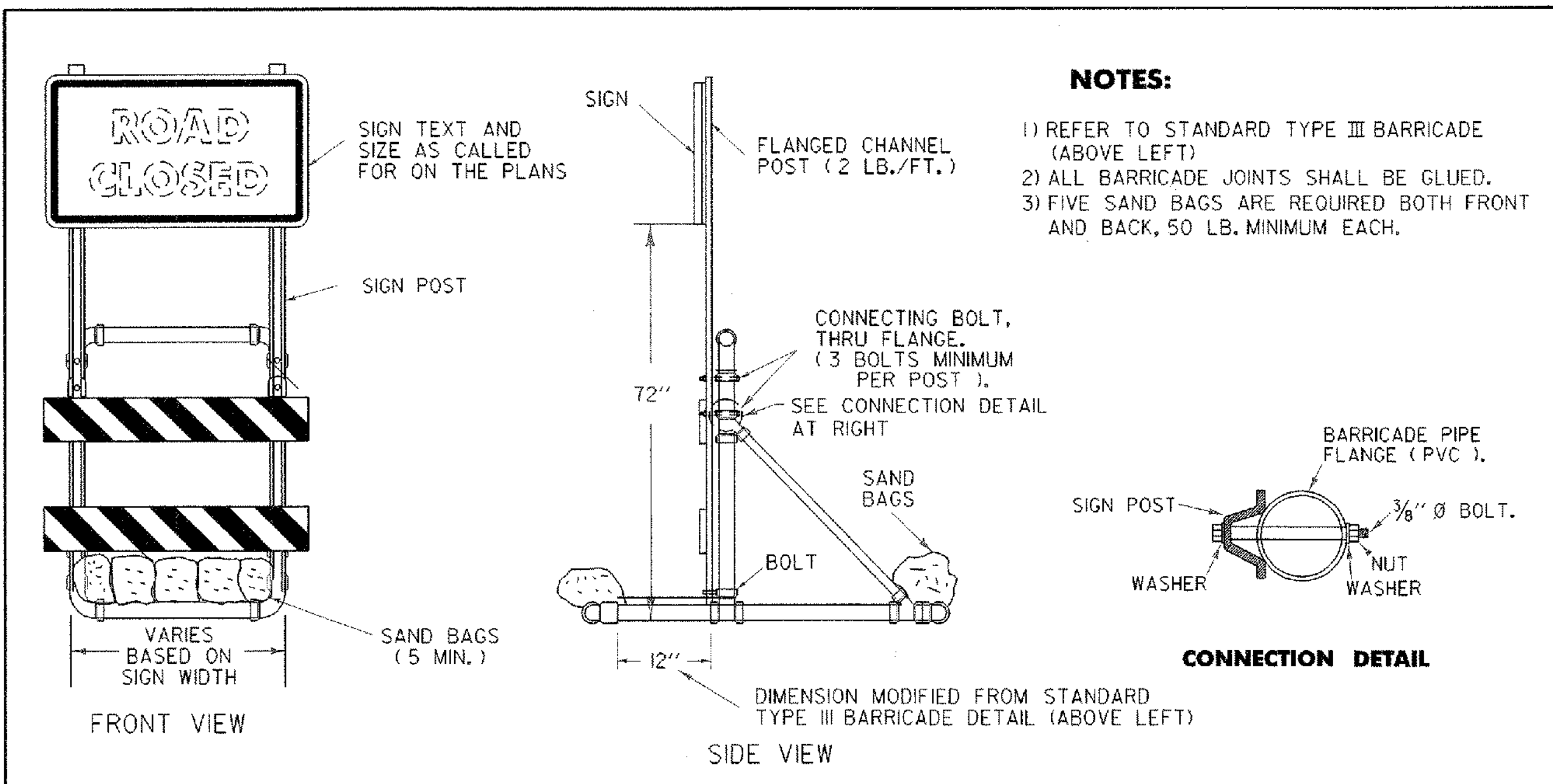


**TYPE III (MODIFIED) BARRICADE
(STRIPING IS SHOWN WITH TRAFFIC PASSING TO THE RIGHT).**

- MATERIALS FOR METAL TYPE III BARRICADES**
- PANELS (3):**
8" X 48" GALVANIZED STEEL, COVERED 1 OR 2 SIDES WITH WHITE/ORANGE, DIAGONALLY STRIPED REFLECTIVE SHEETING
- VERTICAL SUPPORTS (2):** 14 GAGE GALVANIZED TUBING 1 3/4" X 1 3/4" X 60"
- HORIZONTAL SUPPORTS (2):** 14 GAGE GALVANIZED TUBING 1 3/4" X 1 3/4" X 48"
- CROSS BEAM SUPPORT (1):** COLD GALVANIZED STEEL 1/4" X 3" X 43 3/4"
- BREAKAWAY BRACKETS (4):** COLD GALVANIZED STEEL 1/4" X 3" X 5"
- FASTENERS:**
6 - SHEAR BOLTS WITH LOCK NUTS 1/4" D X 2 3/4"
4 - FULCRUM BOLTS WITH LOCK NUTS 3/8" D X 2 3/4"
4 - FASTENER BOLTS WITH LOCK NUTS 3/8" D X 2 3/4"
6 - PANEL BOLTS WITH LOCK NUTS AND WASHERS 1/4" D X 2"
- ALL FASTENERS GALVANIZED STEEL.
ALL BOLTS HEX HEAD.



SIDE AND FRONT VIEW OF TYPE III METAL BARRICADE



**SIGN MOUNTING ON
TYPE III BARRICADE (MODIFIED)**

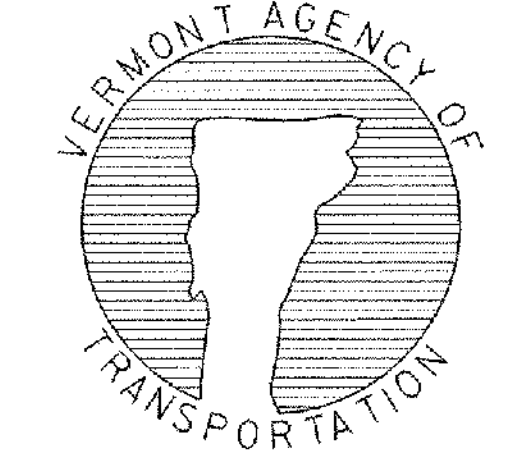
- NOTES:**
- REFER TO STANDARD TYPE III BARRICADE (ABOVE LEFT)
 - ALL BARRICADE JOINTS SHALL BE GLUED.
 - FIVE SAND BAGS ARE REQUIRED BOTH FRONT AND BACK, 50 LB. MINIMUM EACH.

**OTHER STDS. E-107
REQUIRED:**

REVISIONS AND CORRECTIONS
SEPT. 10, 1987 - ORIGINAL APPROVAL DATE
SEPT. 20, 1993 - REVISED NOTES AND TYPE III (MOD.) BARRICADE DETAIL
AUG. 08, 1995 - ADDED METAL TYPE III BARRICADE
JUN. 08, 2009 - MINOR CORRECTIONS

APPROVED
Kevin A. Plaskie
HIGHWAY SAFETY & DESIGN ENGINEER
Richard J. Stewart
DIRECTOR OF PROGRAM DEVELOPMENT
Mark D. Richter
FEDERAL HIGHWAY ADMINISTRATION

**BREAKAWAY BARRICADE
DETAILS**



**STANDARD
E-107 A**