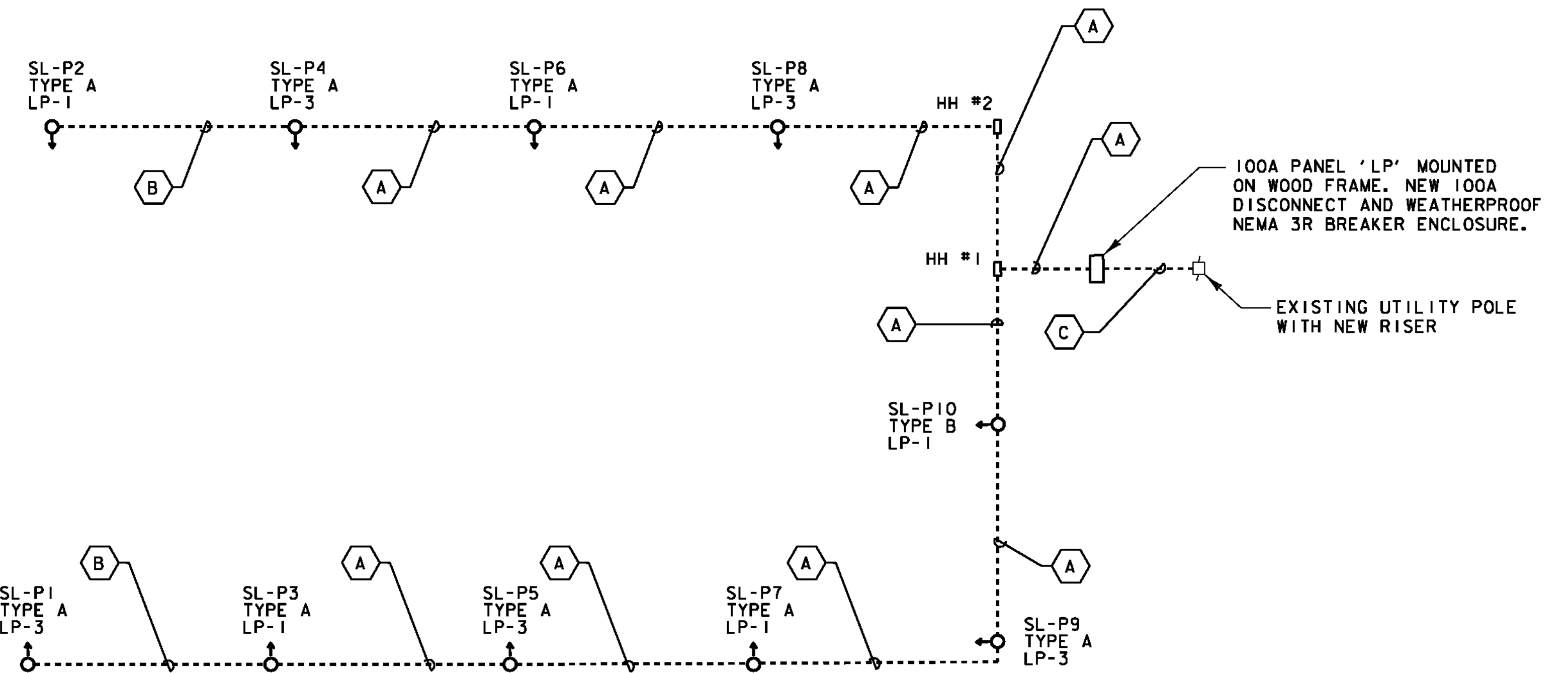
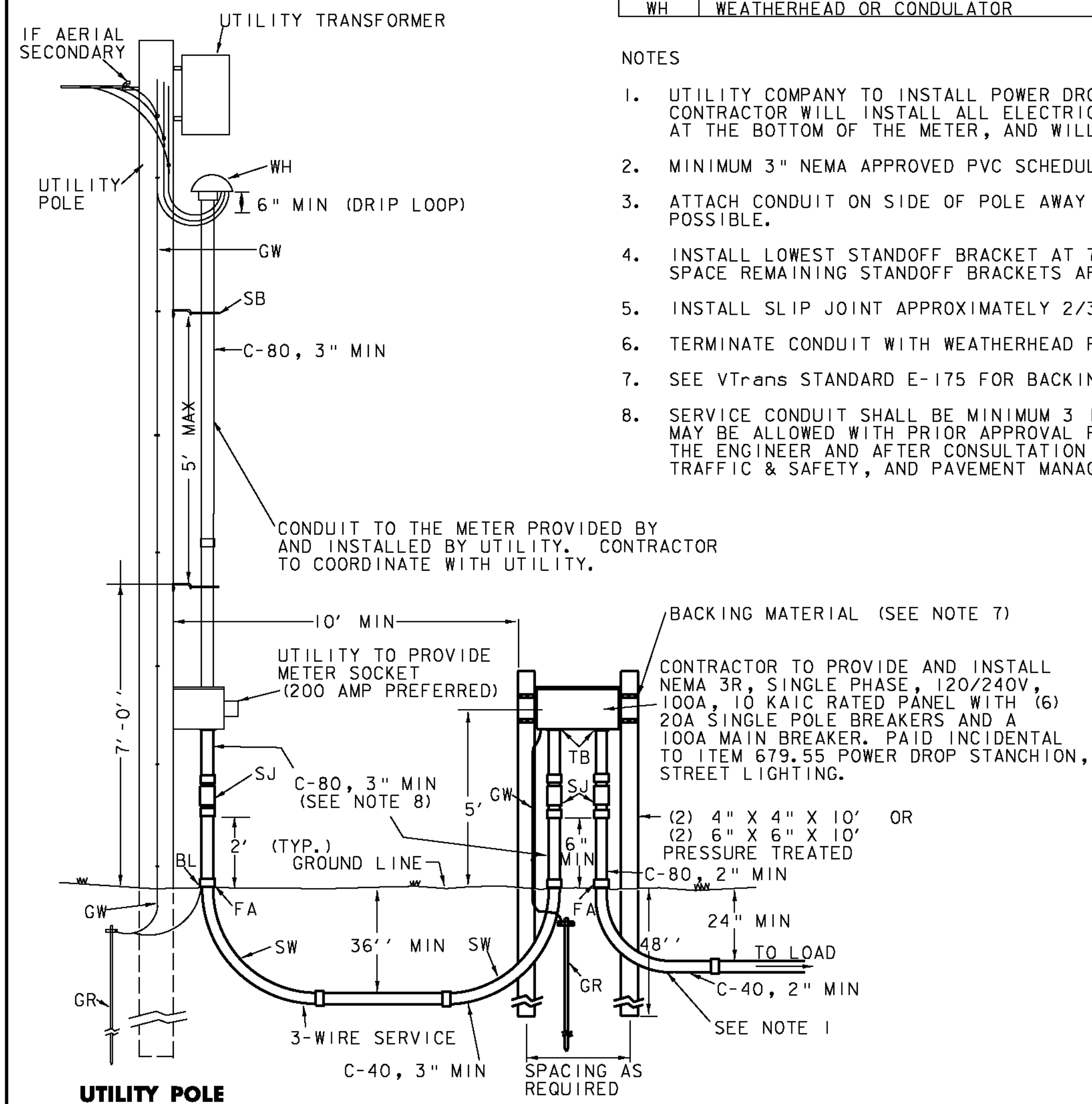


CONDUIT & CONDUCTOR SCHEDULE			
KEY	CONDUIT SIZE, TYPE	CONDUCTORS	
		FOR FIXTURES	FOR GROUND
A	2", PVC	3#6	1#6
B	2", PVC	2#6	1#6
C	3", PVC	3#3	1#6

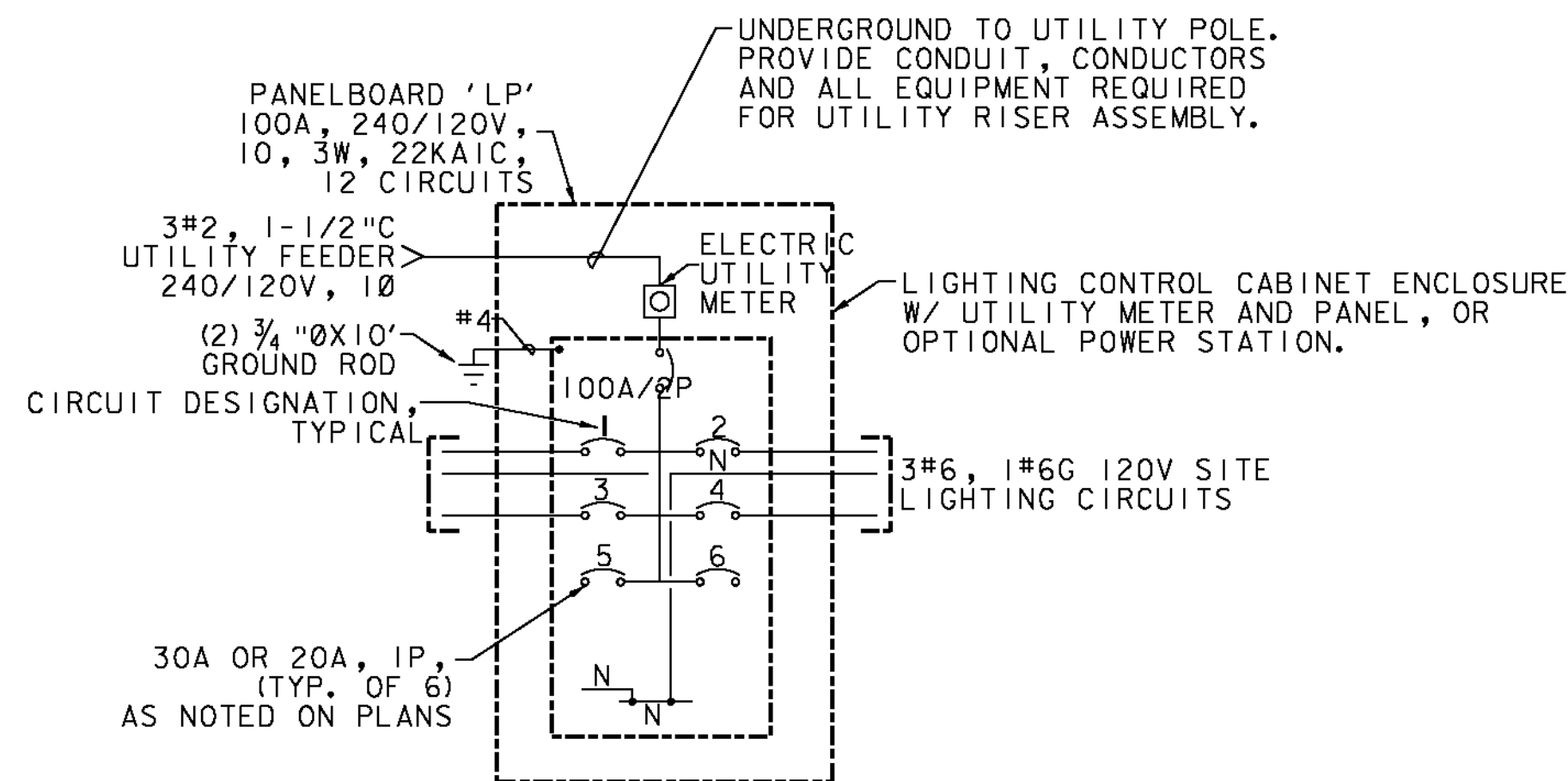
LEGEND	
ITEM	MATERIAL
BL	BONDING LUG (IF STEEL CONDUIT)
C-40	CONDUIT - PVC SCHEDULE 40
C-80	CONDUIT - PVC SCHEDULE 80
CN	CONDUIT NIPPLE
FA	FEMALE ADAPTER OR COUPLINGS AS REQUIRED
GR	GROUND ELECTRODE, 3/4" X 8" (MIN) COPPER CLAD (2 REQ.)
GW	GROUND CONDUCTOR, #6 AWG CU (MIN)
SB	STANDOFF BRACKET (SEE DETAIL THIS SHEET)
SJ	SLIP JOINT, INSTALL 2/3 OPEN
SSS	STAINLESS STEEL STRAP (1" MIN)
SW	90° SWEEPS, (PVC) 36' R. - SERVICE, 24' R. - LOAD
TB	THREADED BUSHING
WH	WEATHERHEAD OR CONDULATOR

NOTES

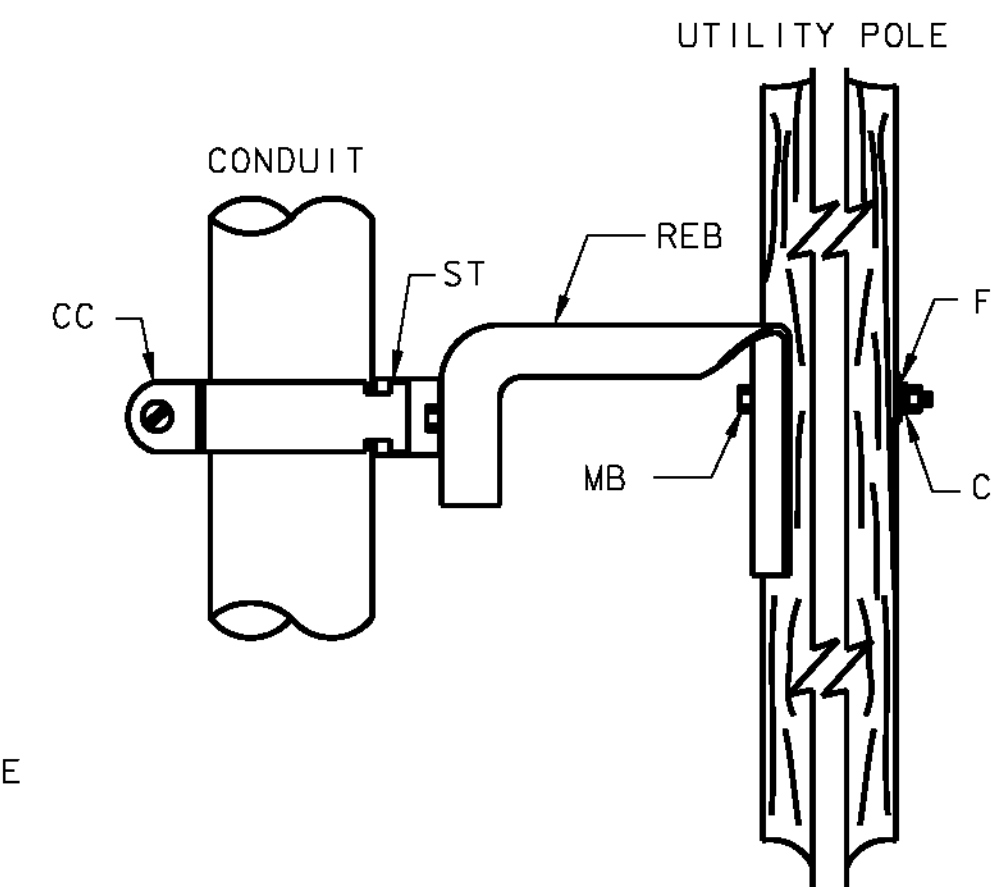
- UTILITY COMPANY TO INSTALL POWER DROP AND METER. CONTRACTOR WILL INSTALL ALL ELECTRICAL WORK BEGINNING AT THE BOTTOM OF THE METER, AND WILL ENERGIZE THE SYSTEM.
- MINIMUM 3" NEMA APPROVED PVC SCHEDULE 80 SHALL BE USED.
- ATTACH CONDUIT ON SIDE OF POLE AWAY FROM TRAFFIC WHEN POSSIBLE.
- INSTALL LOWEST STANDOFF BRACKET AT 7 FEET ABOVE GRADE. SPACE REMAINING STANDOFF BRACKETS APPROX. 5 FEET APART.
- INSTALL SLIP JOINT APPROXIMATELY 2/3 OPEN.
- TERMINATE CONDUIT WITH WEATHERHEAD FOR SECONDARY CABLE.
- SEE VTRANS STANDARD E-175 FOR BACKING MATERIAL DETAIL.
- SERVICE CONDUIT SHALL BE MINIMUM 3 INCH. SMALLER CONDUIT MAY BE ALLOWED WITH PRIOR APPROVAL FROM THE UTILITY AND THE ENGINEER AND AFTER CONSULTATION WITH THE ROADWAY, TRAFFIC & SAFETY, AND PAVEMENT MANAGEMENT SECTIONS.



**ONE-LINE DIAGRAM
SIGHT LIGHTING**
NOT TO SCALE



**ONE-LINE DIAGRAM ROADWAY
LIGHTING SERVICE PEDESTAL**
NOT TO SCALE
NOTE: NO RELAYS REQUIRED



MATERIAL FOR ONE STANDOFF BRACKET	
ITEM	MATERIAL
FW	FLAT WASHER 2" X 2"
CS	COIL SPRING WASHER
REB	REB TRACK EXTENSION BRACKET
ST	STRUT (CUT TO LENGTH)
CC	CONDUIT CLAMP
MB	MACHINE BOLT 5/8"

STANDOFF BRACKET
NOT TO SCALE

PROJECT NAME: ENOSBURG
PROJECT NUMBER: CMG PARK(20)

FILE NAME: ... \22lightingdetails1.ptf PLOT DATE: 5/23/2011
PROJECT LEADER: WLD DRAWN BY: STANTEC
DESIGNED BY: CSP/GGG CHECKED BY: GAS
LIGHTING DETAILS 1 SHEET 22 OF 32

