

- NOTES:
- SEE SURVEY TIE SHEET FOR A SUMMARY OF GPS CONTROL POINTS, TRAVERSE TIES, AND ALIGNMENT TIES.
 - BUS SHELTER TO BE PAID FOR UNDER ITEM 900.645 SPECIAL PROVISION (BUS SHELTER).
 - BICYCLE RACK TO BE PAID FOR UNDER ITEM 900.620 SPECIAL PROVISION (BICYCLE RACK). SEE DETAILS ON SHEET 2.
 - STONE DIAPHRAGM TO BE PAID FOR UNDER ITEM 900.608 SPECIAL PROVISION (STONE DIAPHRAGM).
 - SEE SURVEY CONTROL AND TIES SHEET FOR INFORMATION ON VT ROUTE 105 ALIGNMENT POINTS.
 - TRANSITION VERTICAL GRANITE CURB PER STANDARD DRAWING C-10.
 - CURB AND SIDEWALK SHALL END A MINIMUM OF 18' FROM THE CENTERLINE OF VT ROUTE 105 DUE TO SNOW REMOVAL OPERATIONS.

LAYOUT POINT SUMMARY

LEGEND: LP#X = LAYOUT POINT #X

LAYOUT POINT #1 - END OF CURB	N 76945.14 E 59918.86 VT ROUTE 105 STA. 10+78.47 OFF 32.20' LT.
LAYOUT POINT #2 - EDGE OF PAVEMENT	N 77041.63 E 59946.61 VT ROUTE 105 STA. 10+78.47 OFF 132.60' LT.
LAYOUT POINT #3 - 10' OFF EOP	N 76994.16 E 60147.85 VT ROUTE 105 STA. 12+85.00 OFF 142.60' LT.
LAYOUT POINT #4 - C.P. OF 5' RADIUS	N 76952.70 E 60141.14 VT ROUTE 105 STA. 12+90.00 OFF 100.90' LT.
LAYOUT POINT #5 - C.P. OF 5' RADIUS	N 76939.11 E 60137.23 VT ROUTE 105 STA. 12+90.00 OFF 86.76' LT.
LAYOUT POINT #6 - C.P. OF 5' RADIUS	N 76918.88 E 60131.41 VT ROUTE 105 STA. 12+90.00 OFF 65.70' LT.
LAYOUT POINT #7 - C.P. OF 5' RADIUS	N 76904.26 E 60127.21 VT ROUTE 105 STA. 12+90.00 OFF 50.50' LT.
LAYOUT POINT #8 - C.P. OF 34' RADIUS	N 76891.99 E 60153.85 VT ROUTE 105 STA. 13+19.00 OFF 46.07' LT.
LAYOUT POINT #9 - C.P. OF 8' RADIUS	N 76882.31 E 60079.27 VT ROUTE 105 STA. 12+53.00 OFF 27.20' LT.
LAYOUT POINT #10 - POINT ON CURVE	N 76882.31 E 60079.27 VT ROUTE 105 STA. 12+53.00 OFF 27.20' LT.
LAYOUT POINT #11 - END RADIUS	N 76884.87 E 60056.07 VT ROUTE 105 STA. 12+27.00 OFF 12.20' LT.
LAYOUT POINT #12 - END RADIUS	N 76859.34 E 60144.35 VT ROUTE 105 STA. 13+19.00 OFF 12.20' LT.
LAYOUT POINT #13 - CORNER OF PAD	N 76914.05 E 60148.19 VT ROUTE 105 STA. 13+07.50 OFF 65.70' LT.
LAYOUT POINT #14 - CORNER OF PAD	N 76938.46 E 60155.21 VT ROUTE 105 STA. 13+07.50 OFF 91.10' LT.

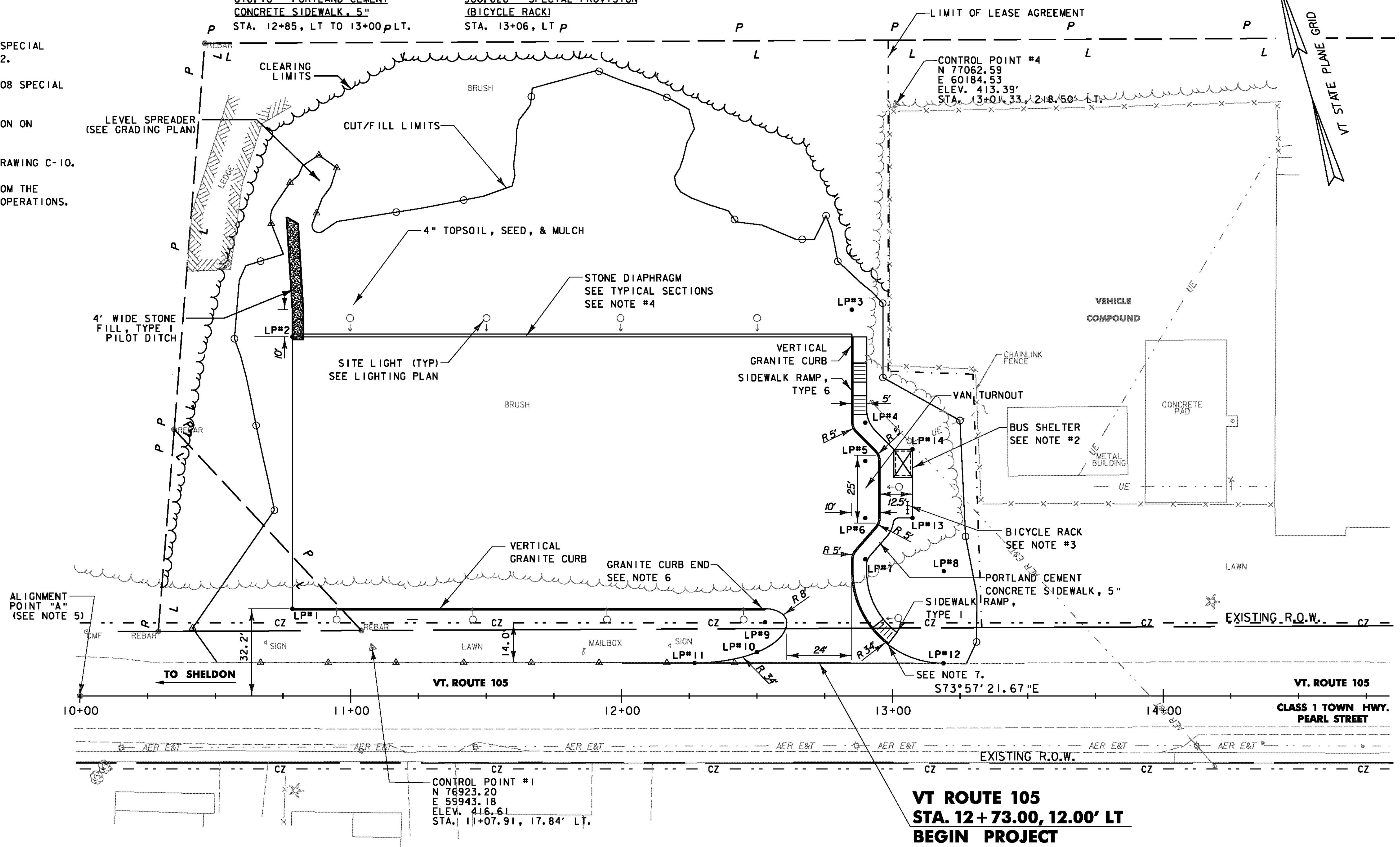
DATUM
 VERTICAL NAVD 88
 HORIZONTAL NAD 83 (1996)
 VT SPC (FEET)

616.21 - VERTICAL GRANITE CURB
 STA. 10+78, LT TO 12+53, LT.
 STA. 12+85, LT TO 12+98, LT.
 618.10 - PORTLAND CEMENT
 CONCRETE SIDEWALK, 5"
 STA. 12+85, LT TO 13+00 PLT.

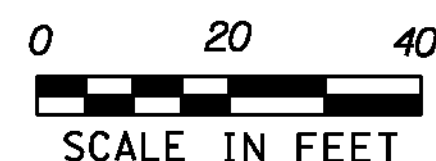
618.30 - DETECTABLE WARNING
 SURFACE
 STA. 12+85, LT
 900.620 - SPECIAL PROVISION
 (BICYCLE RACK)
 STA. 13+06, LT P

900.645 - SPECIAL PROVISION
 (BUS SHELTER)
 STA. 13+04, LT

900.608 - SPECIAL PROVISION
 (STONE DIAPHRAGM)
 STA. 10+78, LT TO 12+85, LT.



**VT ROUTE 105
 STA. 12+73.00, 12.00' LT
 BEGIN PROJECT**



PROJECT NAME: ENOSBURG
 PROJECT NUMBER: CMG PARK(20)
 FILE NAME: ...Trans\PlotFiles\09layout.ppf PLOT DATE: 5/23/2011
 PROJECT LEADER: WLD DRAWN BY: STANTEC
 DESIGNED BY: CSP/GGG CHECKED BY: GAS
LAYOUT PLAN SHEET 9 OF 32