

GPS CONTROL POINTS

EAST BERKSHIRE

DIRECTION	ACTUAL GRID POINTS		SHIFT TO FIT MICROSTATION DESIGN PLANE	PROJECT SPECIFIC COORDINATE POINTS
	METRIC	ENGLISH		
N	270397.879	887132.149'	-800,000	87132.149'
E	483558.275	1586477.280'	-1,500,000	86477.280'
Z	126.37 m	414.60'	N/A	414.60'

GENERAL LOCATION, EAST BERKSHIRE, VT.
 TO REACH FROM THE INTERSECTION OF VT ROUTE 105 AND VT ROUTE 118 SOUTH IN EAST BERKSHIRE GO SOUTHEAST ALONG VT ROUTE 188 FOR 0.05 MI (0.08 KM) TO THE VT ROUTE 118 BRIDGE OVER THE MISSISQUOI RIVER. FROM THE SOUTHEAST END OF THE BRIDGE CONTINUE SOUTHEAST ALONG VT ROUTE 118 FOR ABOUT 164.0 FT (50 M) TO THE SITE OF THE MARK ON THE RIGHT IN A PASTURE. THE MARK IS SET 0.8 IN (2 CM) BELOW GROUND SURFACE IN THE TOP OF A 11.8 IN (30 CM) DIAMETER CONCRETE MONUMENT POURED 4.3 FT (1.3 M) DEEP. IT IS 21.3 FT (6.5 M) SOUTHWEST OF AND ABOUT 1.6 FT (0.5 M) LOWER THAN THE SOUTHWEST EDGE OF PAVEMENT OF VT ROUTE 118, 124.7 FT (38.0 M) NORTHWEST OF POLE NO. 153, AND 4.3 FT (1.3 M) EAST OF POLE NO. 4+1/2 AND A FIBERGLASS WITNESS POST.

- *THE HORIZONTAL COORDINATES WERE ESTABLISHED BY GPS OBSERVATIONS AND ADJUSTED BY THE VERMONT GEODETIC SURVEY.
- *THE ORTHOMETRIC HEIGHT WAS ESTABLISHED BY GPS OBSERVATIONS.

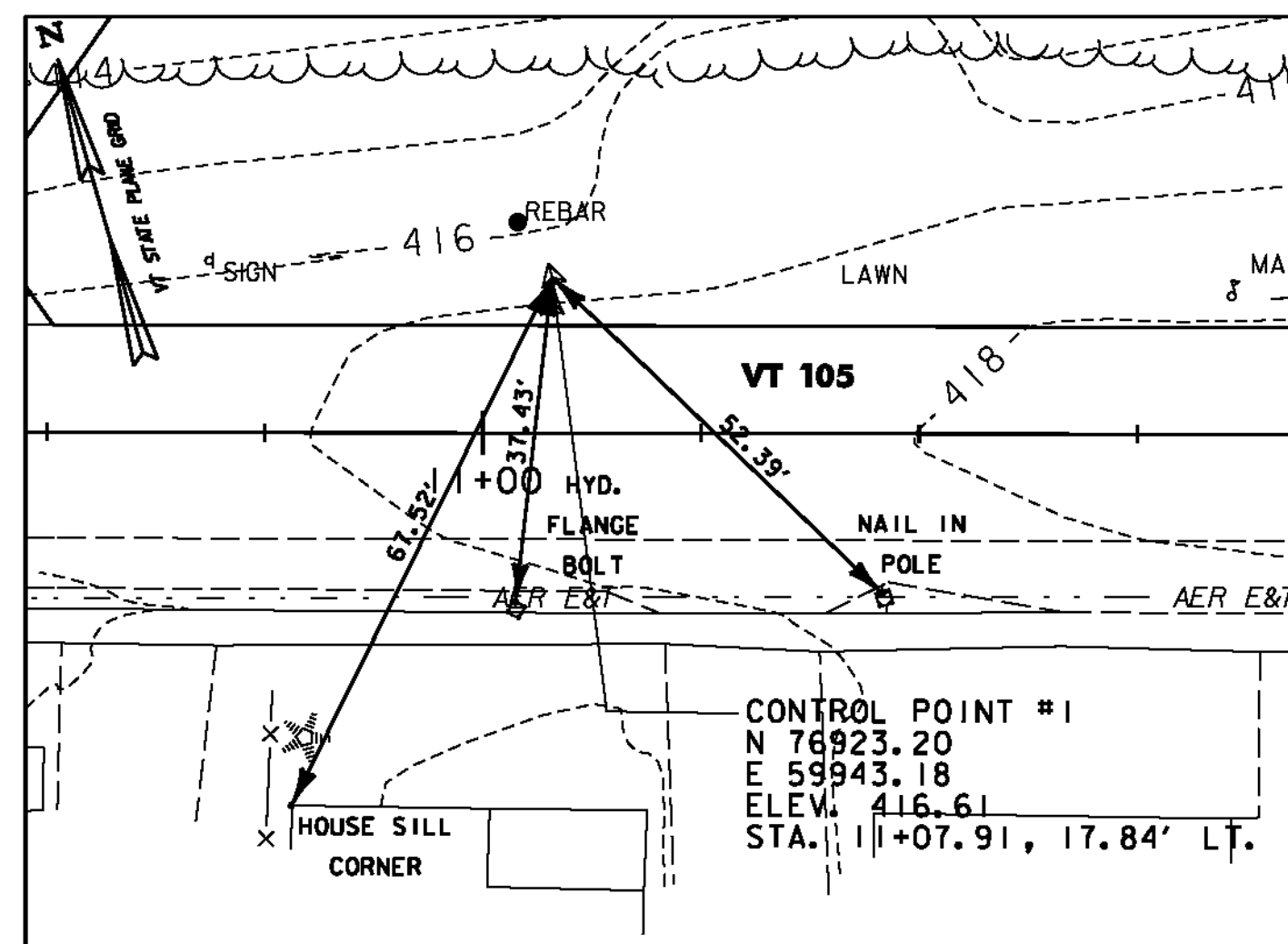
EAST BERKSHIRE AZ MK

DIRECTION	ACTUAL GRID POINTS		SHIFT TO FIT MICROSTATION DESIGN PLANE	PROJECT SPECIFIC COORDINATE POINTS
	METRIC	ENGLISH		
N	269583.690	884460.925	-800,000	84460.925'
E	484025.481	1588010.108	-1,500,000	1438010.108'
Z	74.51 m	244.50'	N/A	244.50'

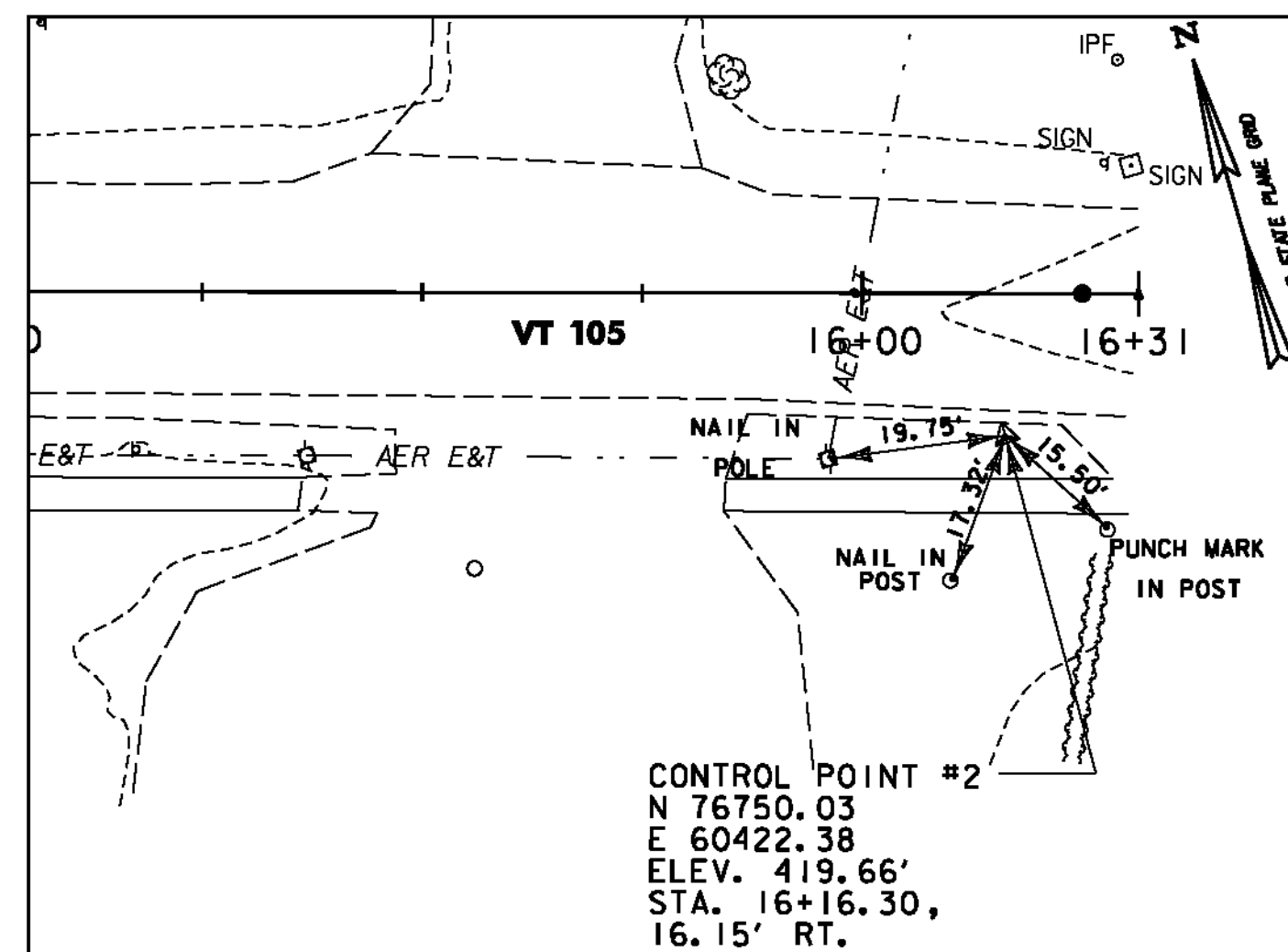
GENERAL LOCATION, ENOSBURG, VT.
 TO REACH FROM THE INTERSECTION OF VT ROUTE 105 AND VT ROUTE 118 SOUTH IN EAST BERKSHIRE GO SOUTHEAST ALONG VT ROUTE 118 FOR 0.55 MI (0.89 KM) TO THE INTERSECTION OF PEARLY ROAD RIGHT. TURN RIGHT AND GO SOUTHWEST ALONG PEARLY ROAD FOR 0.2 MI (0.3 KM) TO THE INTERSECTION OF A GRAVEL DRIVE LEFT, LEADING TO THE WATSON SIGN COMPANY. TURN LEFT AND GO SOUTH ALONG THE GRAVEL DRIVE FOR ABOUT 164.0 FT (50 M) TO THE END OF THE DRIVE AT THE SIGN COMPANY BUILDING. PARK VEHICLE AND WALK SOUTHEAST, UPHILL THROUGH A PASTURE, FOR ABOUT 246.1 FT (75 M) TO THE SITE OF THE MARK. THE MARK IS SET IN THE TOP OF A MASSIVE ROCK OUTCROP ON THE NORTHWEST EDGE OF A KNOB, IN A PASTURE. IT IS 247.4 FT (75.4 M) (SLOPE) SOUTHEAST OF THE SOUTHEAST CORNER OF AN ATTACHED SHED ON THE SIGN COMPANY BUILDING, 162.1 FT (49.4 M) EAST OF THE EAST EDGE OF A POND, 27.9 FT (8.5 M) EAST OF A CLUMP APPLE, 213.3 FT (65.0 M) SOUTHWEST OF AN ANGLE POINT IN A WIRE FENCE, AND 225.7 FT (68.8 M) WEST OF ANOTHER ANGLE POINT IN THE SAME FENCE.

- *THE HORIZONTAL COORDINATES WERE ESTABLISHED BY GPS OBSERVATIONS AND ADJUSTED BY THE VERMONT GEODETIC SURVEY.
- *THE ORTHOMETRIC HEIGHT WAS ESTABLISHED BY GPS OBSERVATIONS.

TRAVERSE TIES



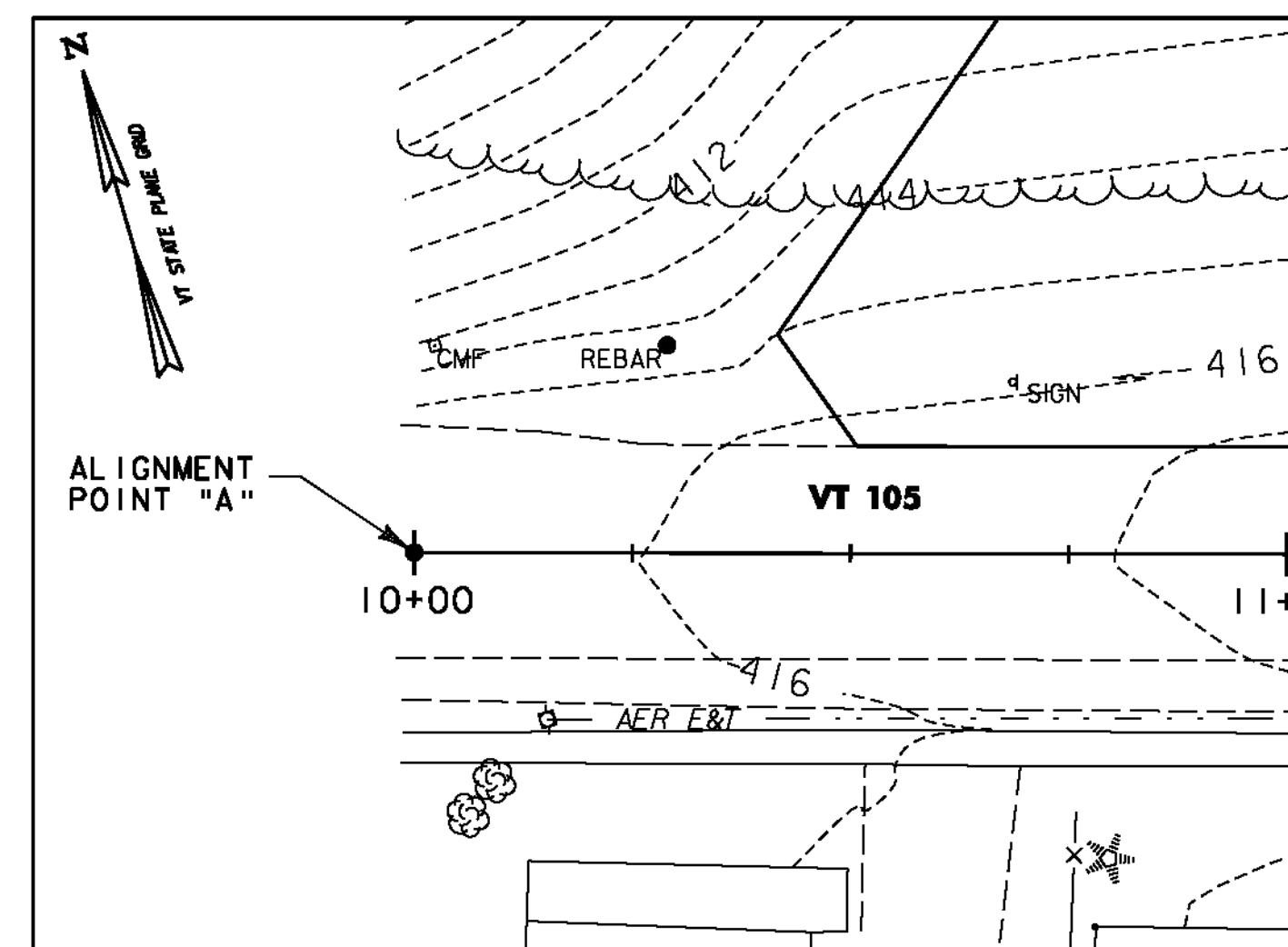
CONTROL POINT #1



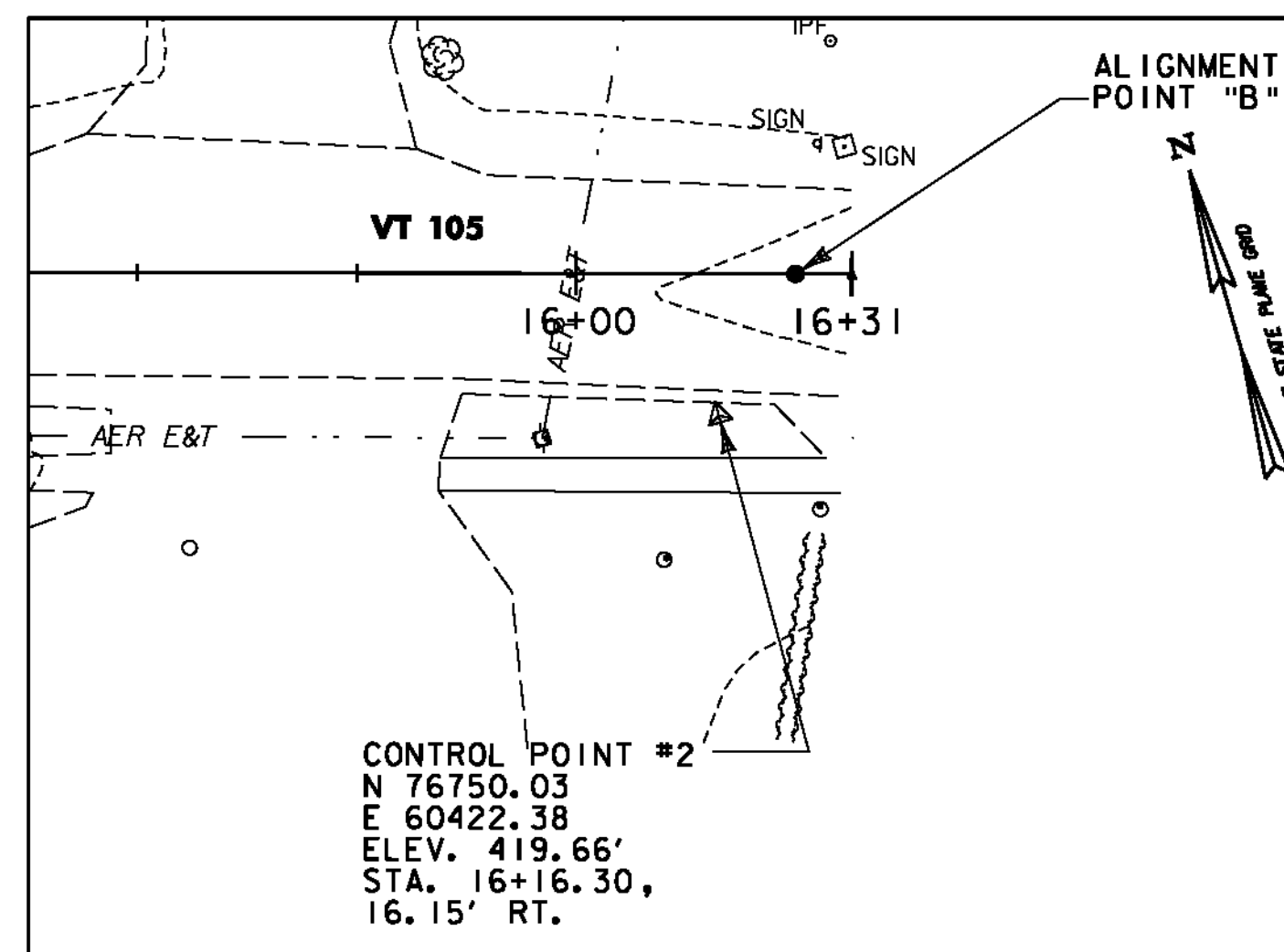
CONTROL POINT #2

CONTROL POINTS					
POINT	NORTHING	EASTING	STATION	OFFSET	ELEVATION
1	76923.20'	59943.18'	11+07.91	17.84' LT	416.61'
2	76750.03'	60422.38'	16+16.30	16.15' RT	419.66'
3	76985.04'	60495.23'	16+21.36	229.84' LT	418.01'
4	77062.59'	60184.53'	13+01.33	218.50' LT	413.39'

ALIGNMENT TIES



ALIGNMENT POINT A



ALIGNMENT POINT B

ALIGNMENT POINTS				
POINT	NORTHING	EASTING	STATION	ELEVATION
A	76935.88'	59834.54'	10+00	415.49'
B	76763.15'	60436.20'	16+25	420.06'

ALIGNMENT POINTS LOCATION

DATUM	
VERTICAL	NAVD 88
HORIZONTAL	NAD 83 (1996)
ADJUSTMENT	none



PROJECT NAME:	ENOSBURG	PLOT DATE:	5/23/2011
PROJECT NUMBER:	CMG PARK(20)	DRAWN BY:	STANTEC
FILE NAME:	...Trans\PlotFiles\07ties.pxf	DESIGNED BY:	CSP/GGG
		CHECKED BY:	GAS
		SURVEY CONTROL AND TIES	
		SHEET 7 OF 32	