

GPS CONTROL POINTS

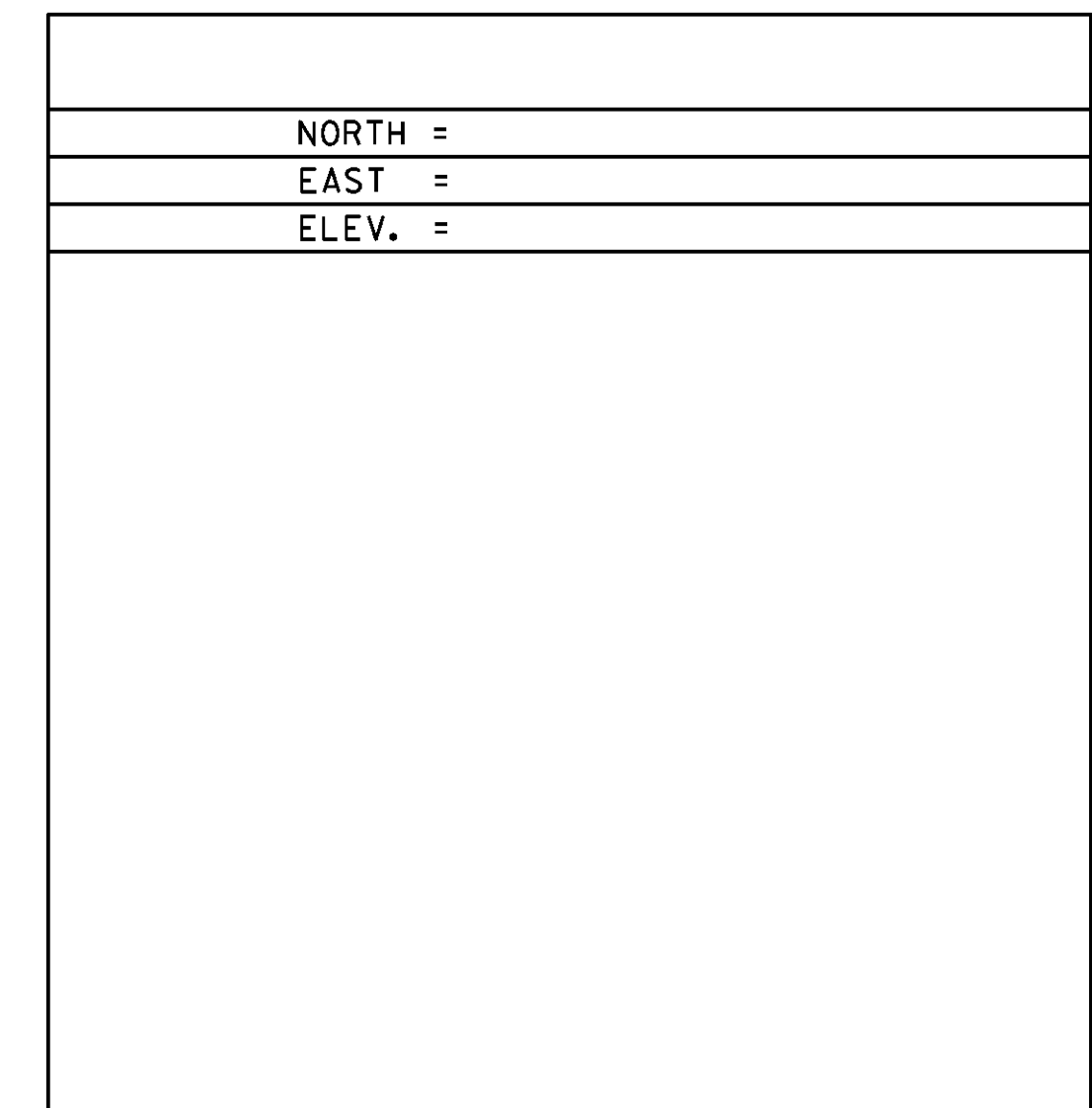
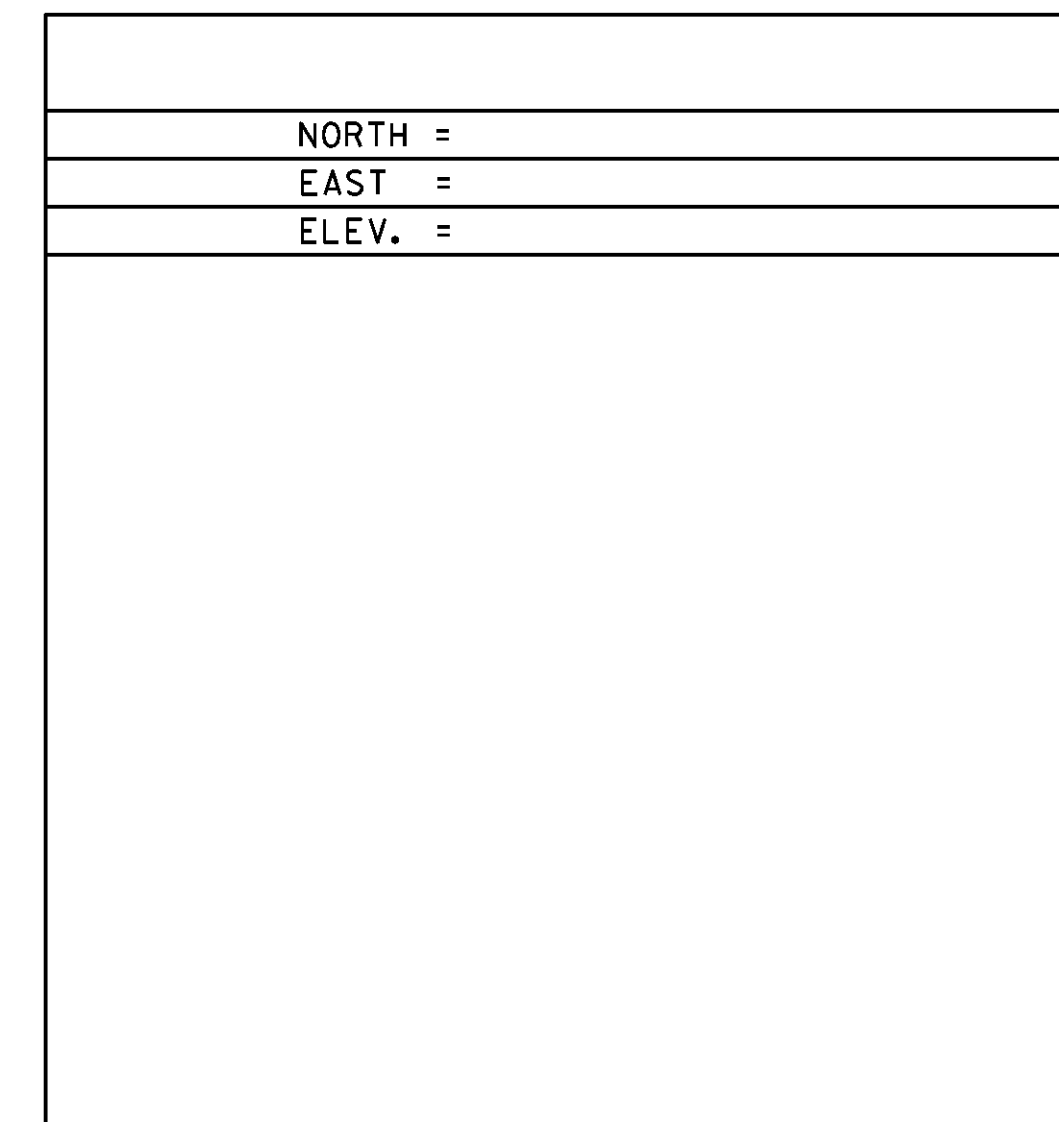
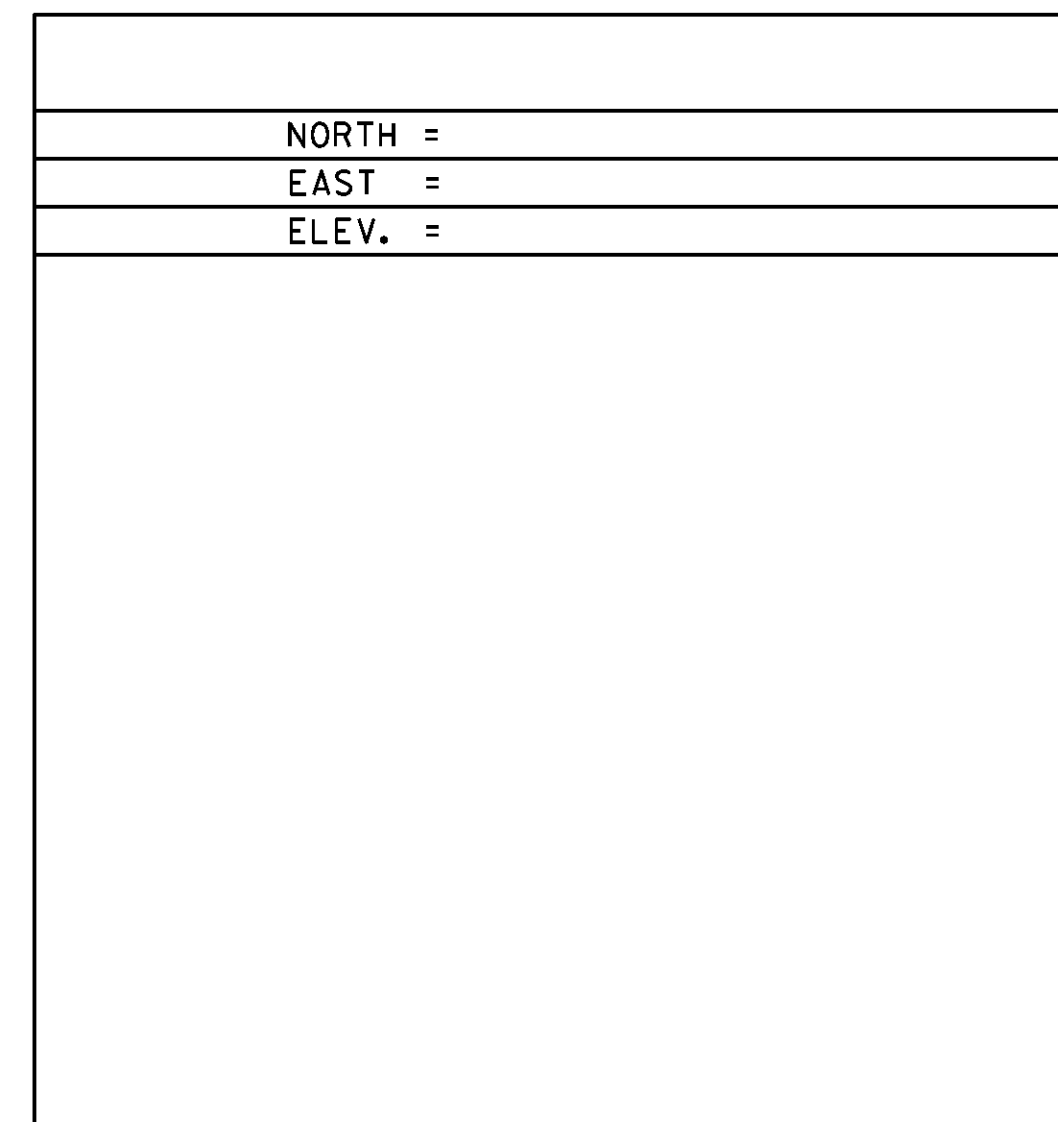
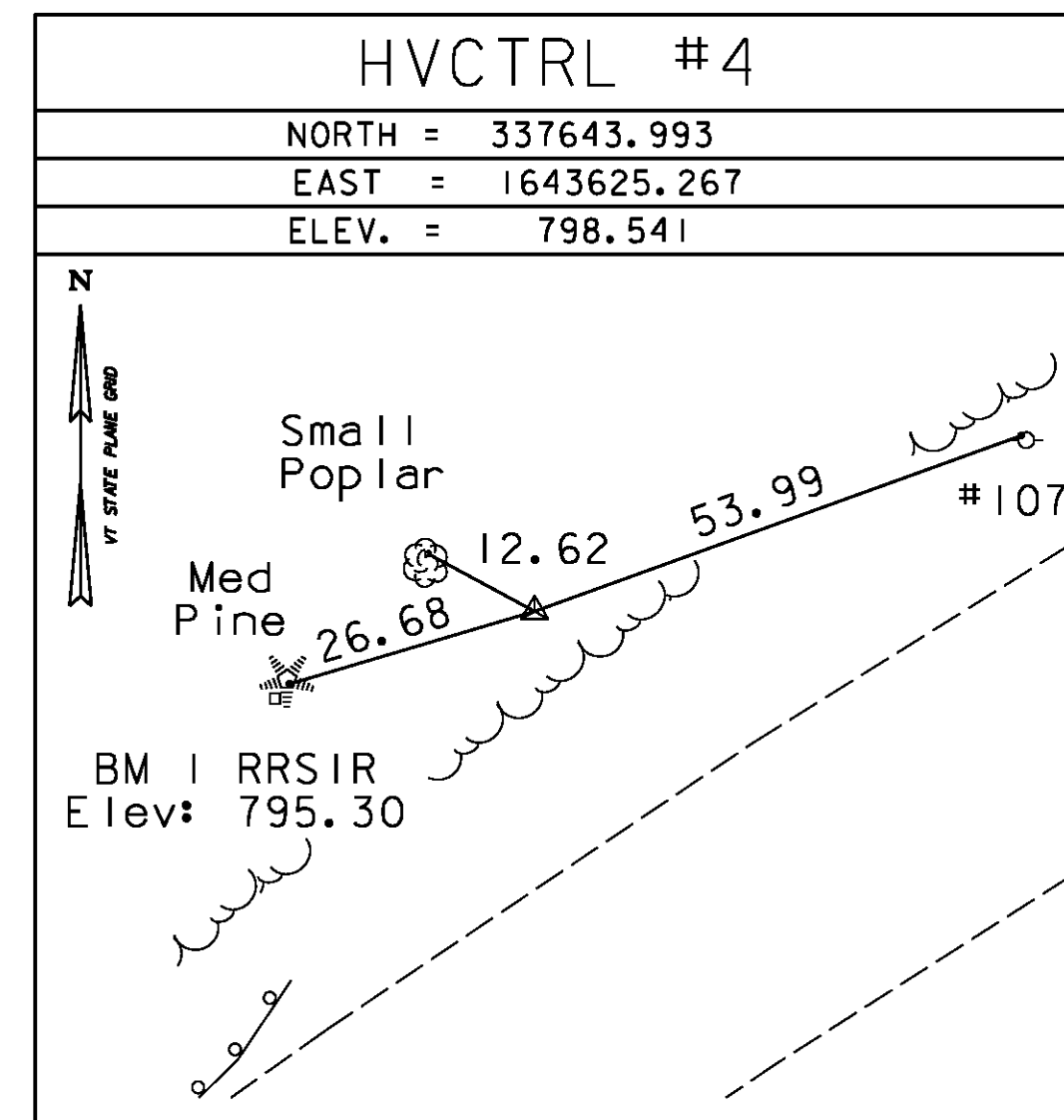
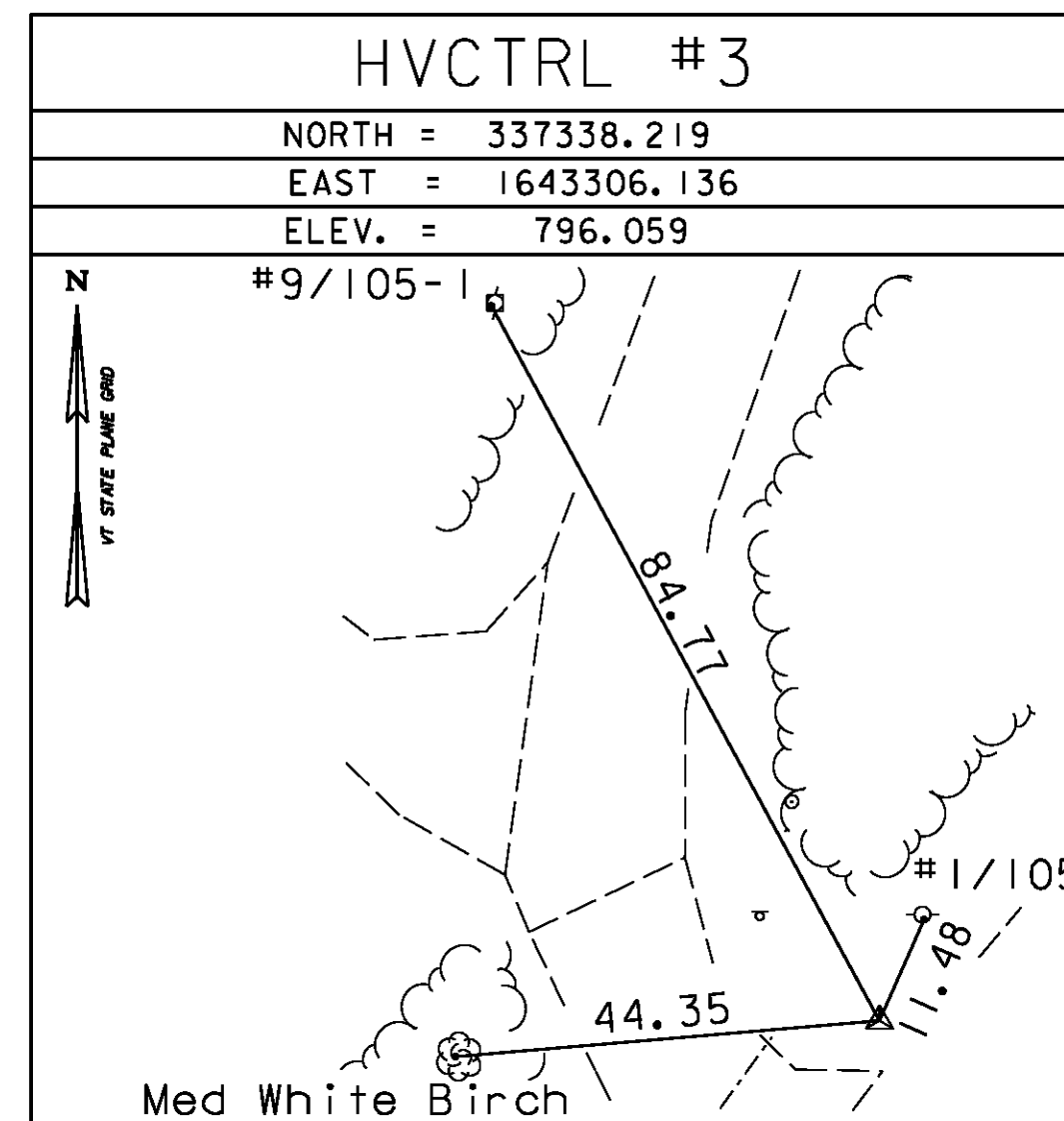
HVCTRL # 1  
 STANDARD DISK STAMPED  
 Roberts Az Mk  
 N = 334726.6170  
 E = 1642200.2260  
 ELEV. = 793.140

To reach from the I-91 bridges over VT route 131 at exit 8 in Ascutney go west along route 131 for 4.7 mi. to the intersection of Piper Road left. Continue straight ahead and go southeast along route 131 for 0.25 mi to the site of the mark. on the left at the southwest corner of a large field. The mark is set flush with the ground surface in the top of a 7.9 ft by 6.6 ft rock. It is 40 ft east southeast of and about 1.3 ft lower than the centerline of route 131, 75.5 ft southeast of pole # 4122/27a/1/92/14a, 12.8 ft northwest of a guy anchor, and 13.5 ft northeast of pole #4122/27/14/1 and a fiberglass witness post.

HVCTRL # 2  
 STANDARD DISK STAMPED  
 Roberts  
 N = 335986.7560  
 E = 1642432.6990  
 ELEV. = 811.380

To reach from the I-91 bridges over VT route 131 at exit 8 in Ascutney go west along route 131 for 4.7 mi. to the intersection of Piper Road left and the site of the mark on the left in a field. The mark is set flush with ground surface in the top of a 2 ft by 1.6 ft rock. It is 61 ft southeast of and about 5.2 ft lower than the centerline of route 131, 61.4 ft southwest of the centerline of Piper Road, 53.5 ft west northwest of pole #1aa/97aa, and 44 ft southwest of a load limit sign and a fiberglass witness post.

TRAVERSE TIES



\* MAIN TRAVERSE COMPLETED 01/25/01 by R. Gilman (P.C.) R. Bullock & D. Breer

DATUM	
VERTICAL	NAVD 88
HORIZONTAL	NAD 83(96)
ADJUSTMENT	NONE

540 Commercial Street, Manchester, NH 03101  
 (603) 668-8223 • Fax: (603) 668-8802  
 cld@cldengineers.com • www.cldengineers.com  
 Maine • New Hampshire • Vermont

PROJECT NAME:	WEATHERSFIELD
PROJECT NUMBER:	STP 0146 (II)
FILE NAME:	survey\00c268t1.dgn
PROJECT LEADER:	J. FITCH
DESIGNED BY:	K. RUTTER
TIE SHEET	
PLOT DATE:	4/2/2013
DRAWN BY:	K. RUTTER
CHECKED BY:	C. GREGORY
SHEET	5 OF 16