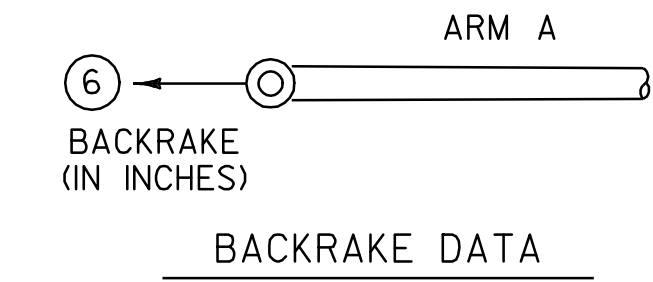
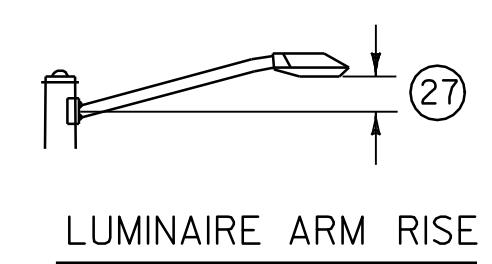
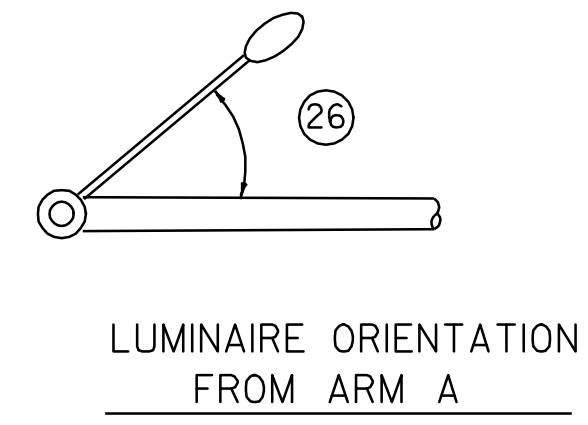
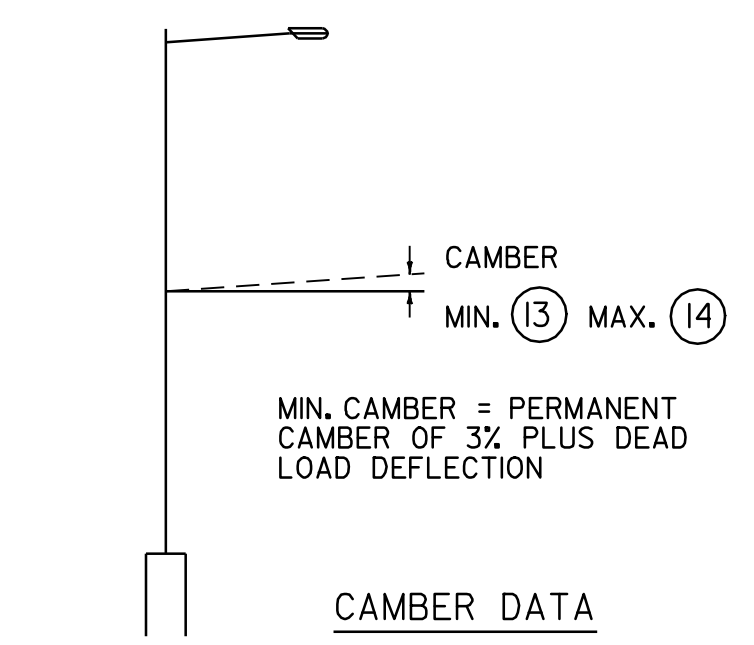
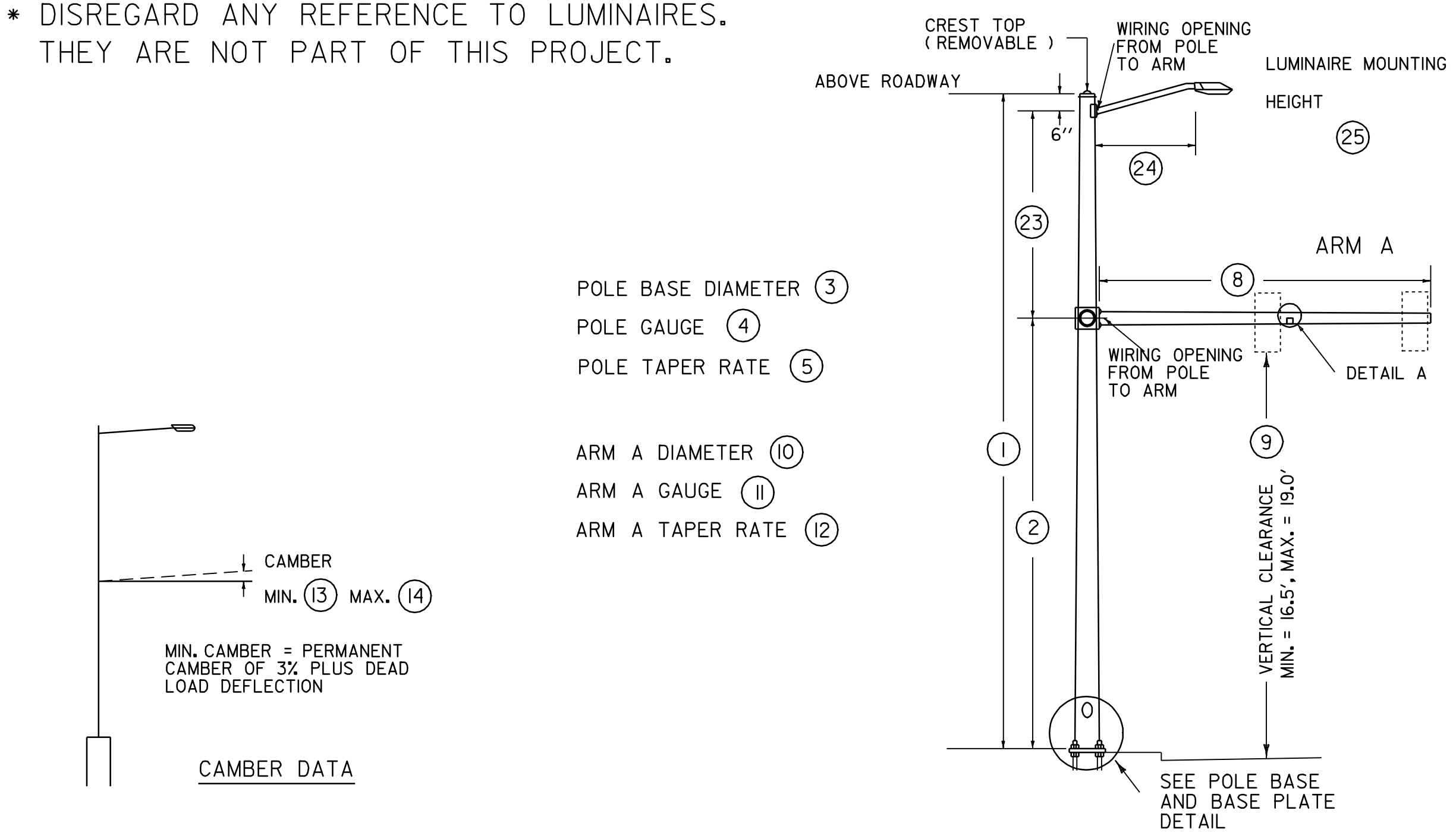
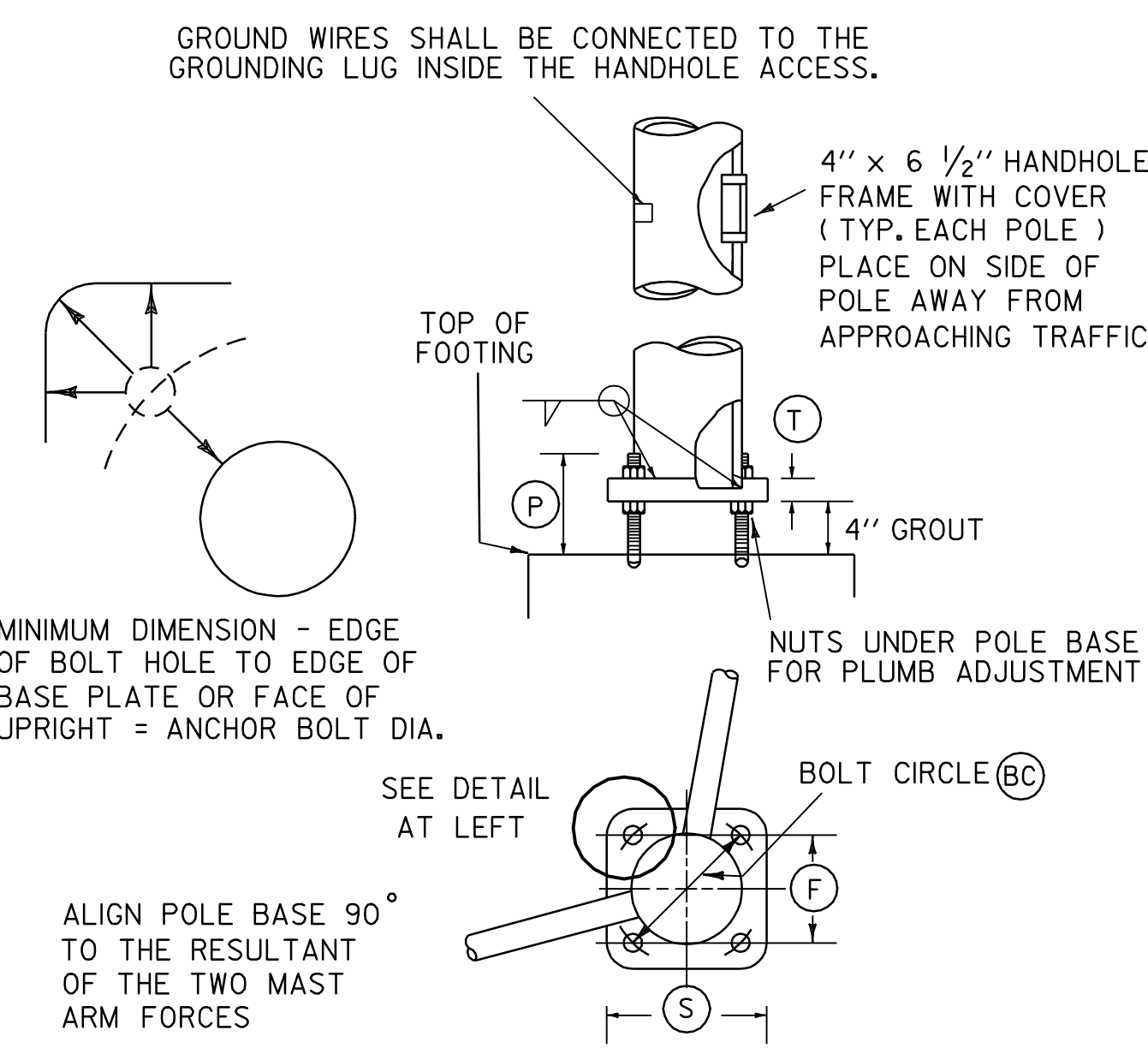


\* DISREGARD ANY REFERENCE TO LUMINAIRES. THEY ARE NOT PART OF THIS PROJECT.



SEE CANTILEVER / OVERHEAD SIGN / SIGNAL SUPPORTS NOTE SHEET FOR ADDITIONAL INFORMATION



POLE	POLE DATA						ARM DATA								LIGHTING DATA					FOOTING DATA		BASE PLATE / BOLT DATA					
	(1)	(2)	(3)	(4)	(5)	(6)	(8)	(9)	(10)	(11)	(12)	(13)	(14)	(23)	(24)	(25)	(26)	(27)	(28)	(29)	(BC)	(F)	(S)	(T)	(P)	ANCHOR BOLT SIZE	
MA1																											
MA2																											
MA3																											

**NOTE:**  
 DETAILS NOT TO SCALE

# MAST ARM CANTILEVER WITH LIGHTING / FOOTING DETAIL SHEET

PREPARED BY BRM DATE \_\_\_\_\_  
 CHECKED BY \_\_\_\_\_ DATE \_\_\_\_\_  
 DESIGN SUPERVISOR BTN DATE \_\_\_\_\_  
 PROJ. **NORWICH STPG 0107(3)S**

traf/00c224/dc224fds.i  
 LAST REVISED 8/15/95

SHEET 8 OF 9 SHEETS