

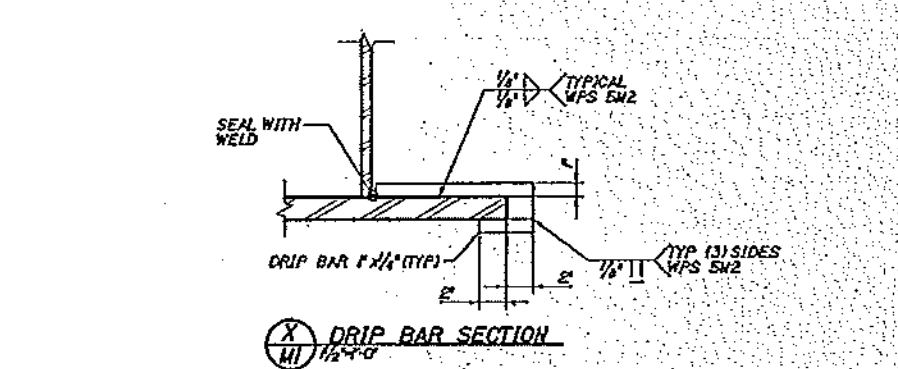
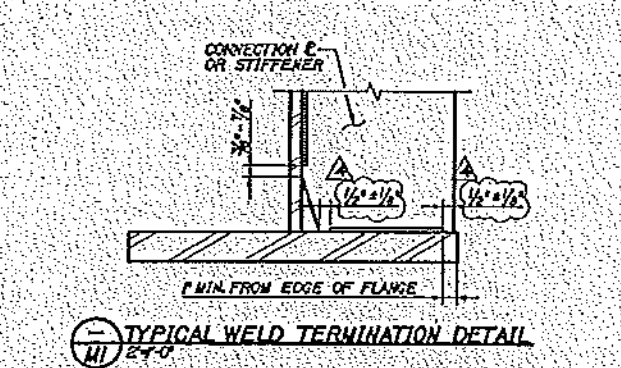
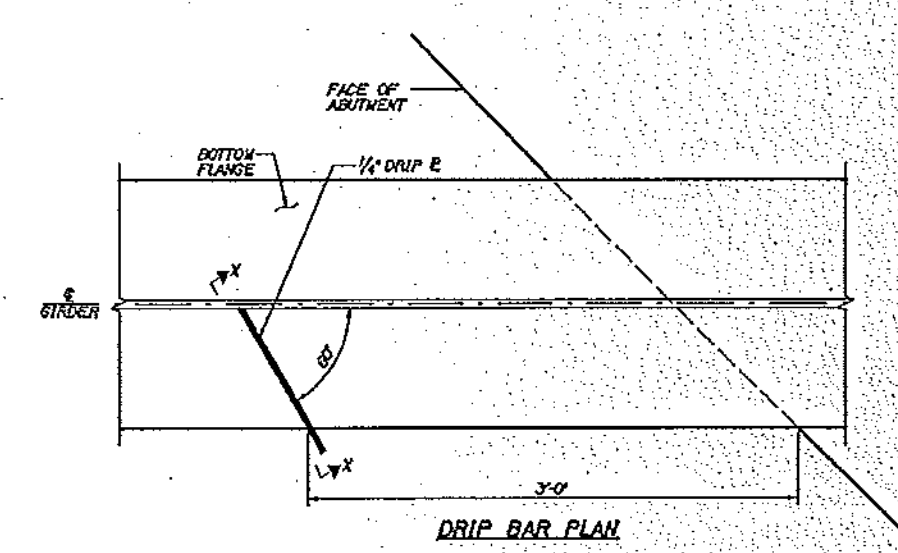
BILL OF MATERIALS

SHOP MARK	SHOP NO.	PIECE MARK	DESCRIPTION	LENGTH	REMARKS	MAT'L
4	4	4	E 1/2" x 1/4"	20"	TOP EACH	CON
5	5	5	E 1/2" x 1/4"	20"	TOP EACH	CON
6	6	6	E 1/2" x 1/4"	20"	TOP EACH	CON
7	7	7	E 1/2" x 1/4"	20"	TOP EACH	CON
8	8	8	E 1/2" x 1/4"	20"	TOP EACH	CON
9	9	9	E 1/2" x 1/4"	20"	TOP EACH	CON
10	10	10	E 1/2" x 1/4"	20"	TOP EACH	CON
11	11	11	E 1/2" x 1/4"	20"	TOP EACH	CON
12	12	12	E 1/2" x 1/4"	20"	TOP EACH	CON
13	13	13	E 1/2" x 1/4"	20"	TOP EACH	CON
14	14	14	E 1/2" x 1/4"	20"	TOP EACH	CON
15	15	15	E 1/2" x 1/4"	20"	TOP EACH	CON
16	16	16	E 1/2" x 1/4"	20"	TOP EACH	CON
17	17	17	E 1/2" x 1/4"	20"	TOP EACH	CON
18	18	18	E 1/2" x 1/4"	20"	TOP EACH	CON
19	19	19	E 1/2" x 1/4"	20"	TOP EACH	CON
20	20	20	E 1/2" x 1/4"	20"	TOP EACH	CON
21	21	21	E 1/2" x 1/4"	20"	TOP EACH	CON
22	22	22	E 1/2" x 1/4"	20"	TOP EACH	CON
23	23	23	E 1/2" x 1/4"	20"	TOP EACH	CON
24	24	24	E 1/2" x 1/4"	20"	TOP EACH	CON
25	25	25	E 1/2" x 1/4"	20"	TOP EACH	CON
26	26	26	E 1/2" x 1/4"	20"	TOP EACH	CON
27	27	27	E 1/2" x 1/4"	20"	TOP EACH	CON
28	28	28	E 1/2" x 1/4"	20"	TOP EACH	CON
29	29	29	E 1/2" x 1/4"	20"	TOP EACH	CON
30	30	30	E 1/2" x 1/4"	20"	TOP EACH	CON
31	31	31	E 1/2" x 1/4"	20"	TOP EACH	CON
32	32	32	E 1/2" x 1/4"	20"	TOP EACH	CON
33	33	33	E 1/2" x 1/4"	20"	TOP EACH	CON
34	34	34	E 1/2" x 1/4"	20"	TOP EACH	CON
35	35	35	E 1/2" x 1/4"	20"	TOP EACH	CON
36	36	36	E 1/2" x 1/4"	20"	TOP EACH	CON
37	37	37	E 1/2" x 1/4"	20"	TOP EACH	CON
38	38	38	E 1/2" x 1/4"	20"	TOP EACH	CON
39	39	39	E 1/2" x 1/4"	20"	TOP EACH	CON
40	40	40	E 1/2" x 1/4"	20"	TOP EACH	CON
41	41	41	E 1/2" x 1/4"	20"	TOP EACH	CON
42	42	42	E 1/2" x 1/4"	20"	TOP EACH	CON
43	43	43	E 1/2" x 1/4"	20"	TOP EACH	CON
44	44	44	E 1/2" x 1/4"	20"	TOP EACH	CON
45	45	45	E 1/2" x 1/4"	20"	TOP EACH	CON
46	46	46	E 1/2" x 1/4"	20"	TOP EACH	CON
47	47	47	E 1/2" x 1/4"	20"	TOP EACH	CON
48	48	48	E 1/2" x 1/4"	20"	TOP EACH	CON
49	49	49	E 1/2" x 1/4"	20"	TOP EACH	CON
50	50	50	E 1/2" x 1/4"	20"	TOP EACH	CON
51	51	51	E 1/2" x 1/4"	20"	TOP EACH	CON
52	52	52	E 1/2" x 1/4"	20"	TOP EACH	CON
53	53	53	E 1/2" x 1/4"	20"	TOP EACH	CON
54	54	54	E 1/2" x 1/4"	20"	TOP EACH	CON
55	55	55	E 1/2" x 1/4"	20"	TOP EACH	CON
56	56	56	E 1/2" x 1/4"	20"	TOP EACH	CON
57	57	57	E 1/2" x 1/4"	20"	TOP EACH	CON
58	58	58	E 1/2" x 1/4"	20"	TOP EACH	CON
59	59	59	E 1/2" x 1/4"	20"	TOP EACH	CON
60	60	60	E 1/2" x 1/4"	20"	TOP EACH	CON
61	61	61	E 1/2" x 1/4"	20"	TOP EACH	CON
62	62	62	E 1/2" x 1/4"	20"	TOP EACH	CON
63	63	63	E 1/2" x 1/4"	20"	TOP EACH	CON
64	64	64	E 1/2" x 1/4"	20"	TOP EACH	CON
65	65	65	E 1/2" x 1/4"	20"	TOP EACH	CON
66	66	66	E 1/2" x 1/4"	20"	TOP EACH	CON
67	67	67	E 1/2" x 1/4"	20"	TOP EACH	CON
68	68	68	E 1/2" x 1/4"	20"	TOP EACH	CON
69	69	69	E 1/2" x 1/4"	20"	TOP EACH	CON
70	70	70	E 1/2" x 1/4"	20"	TOP EACH	CON
71	71	71	E 1/2" x 1/4"	20"	TOP EACH	CON
72	72	72	E 1/2" x 1/4"	20"	TOP EACH	CON
73	73	73	E 1/2" x 1/4"	20"	TOP EACH	CON
74	74	74	E 1/2" x 1/4"	20"	TOP EACH	CON
75	75	75	E 1/2" x 1/4"	20"	TOP EACH	CON
76	76	76	E 1/2" x 1/4"	20"	TOP EACH	CON
77	77	77	E 1/2" x 1/4"	20"	TOP EACH	CON
78	78	78	E 1/2" x 1/4"	20"	TOP EACH	CON
79	79	79	E 1/2" x 1/4"	20"	TOP EACH	CON
80	80	80	E 1/2" x 1/4"	20"	TOP EACH	CON
81	81	81	E 1/2" x 1/4"	20"	TOP EACH	CON
82	82	82	E 1/2" x 1/4"	20"	TOP EACH	CON
83	83	83	E 1/2" x 1/4"	20"	TOP EACH	CON
84	84	84	E 1/2" x 1/4"	20"	TOP EACH	CON
85	85	85	E 1/2" x 1/4"	20"	TOP EACH	CON
86	86	86	E 1/2" x 1/4"	20"	TOP EACH	CON
87	87	87	E 1/2" x 1/4"	20"	TOP EACH	CON
88	88	88	E 1/2" x 1/4"	20"	TOP EACH	CON
89	89	89	E 1/2" x 1/4"	20"	TOP EACH	CON
90	90	90	E 1/2" x 1/4"	20"	TOP EACH	CON
91	91	91	E 1/2" x 1/4"	20"	TOP EACH	CON
92	92	92	E 1/2" x 1/4"	20"	TOP EACH	CON
93	93	93	E 1/2" x 1/4"	20"	TOP EACH	CON
94	94	94	E 1/2" x 1/4"	20"	TOP EACH	CON
95	95	95	E 1/2" x 1/4"	20"	TOP EACH	CON
96	96	96	E 1/2" x 1/4"	20"	TOP EACH	CON
97	97	97	E 1/2" x 1/4"	20"	TOP EACH	CON
98	98	98	E 1/2" x 1/4"	20"	TOP EACH	CON
99	99	99	E 1/2" x 1/4"	20"	TOP EACH	CON
100	100	100	E 1/2" x 1/4"	20"	TOP EACH	CON

FIELD BOLTS

500	F01	1/4" BOLT W/ NUT	20"	ASTM A307, TYPE 3
60	F02	3/4" BOLT W/ NUT	20"	ASTM A307, TYPE 3
60	F03	1/2" BOLT W/ NUT	20"	ASTM A307, TYPE 3
60	F04	1/4" BOLT W/ NUT	20"	ASTM A307, TYPE 3

NOTE: ALL ASTM TYPE BOLTS ARE TO BE USED OUTSIDE THE PAINT LIMITS. ALL ASTM TYPE BOLTS ARE TO BE USED WITH PAINT LIMITS. USE SHEET 12 AND 13 FOR REINFORCEMENT #1 AND #2.



Vermont Agency of Transportation
RECEIVED
 CK'D BY GML OK'D BY JEL
 11:20 am, Mar 19, 2012
 RESUBMIT _____ APPROVED X
 BY KMH DATE 3/19/2012

PROJECT	ARC	DATE	3/19/2012
CLIENT	VERMONT AGENCY OF TRANSPORTATION	PROJECT NO.	100-1000
LOCATION	SPRINGFIELD VERMONT	DRAWING NO.	M1
DATE	3/19/2012	PROJECT	T-BUCK CONSTRUCTION