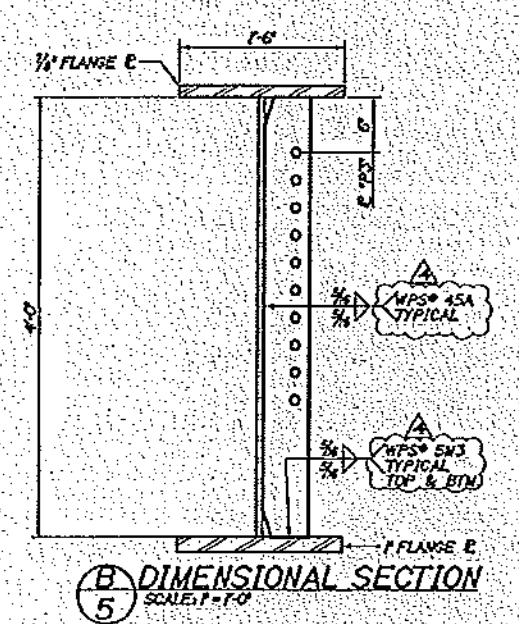
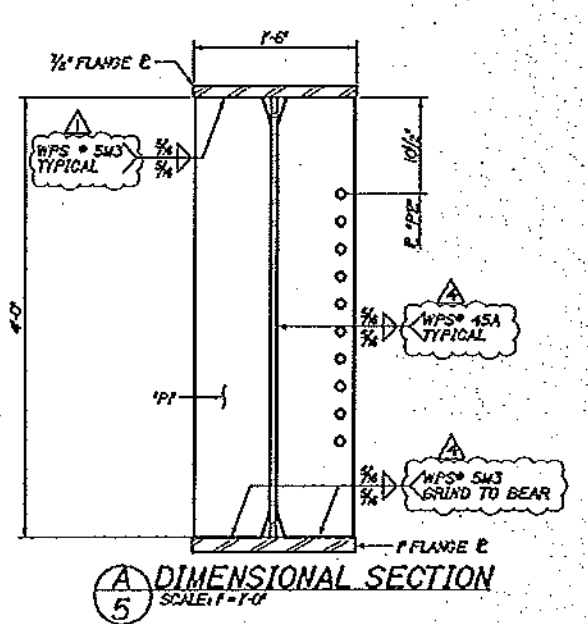
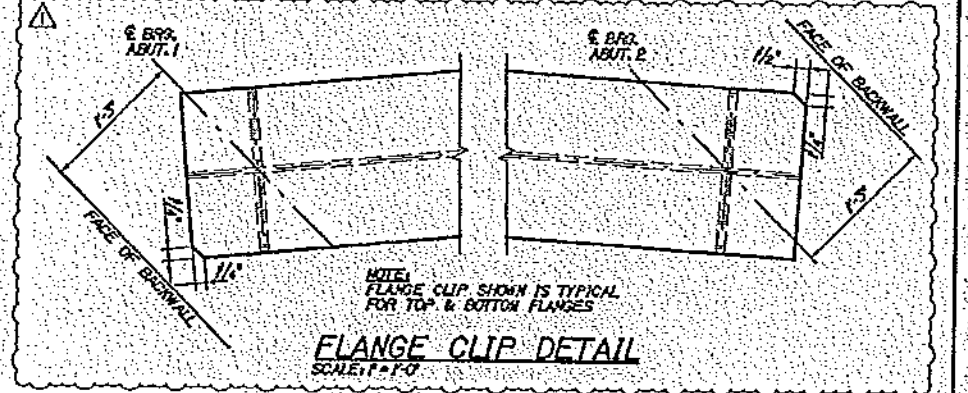


STIFFENERS AND ENDS OF BEAM CHANGED TO BE VERTICAL AT STEEL LOAD CONDITION. HANGING DIMENSIONS ADDED TO THE BOTTOM OF THE STIFFENERS. BEAM IS ASSUMED TO BE FULLY WELDED BETWEEN WEB AND FLANGE WILL BE THE HANGING DIMENSIONS HAVE BEEN WELDED ACCORDING.

1 DIMENSIONAL PLANS & ELEVATIONS - GIRDER "G4"
 DIMENSIONAL PLANS AND ELEVATIONS (DIMENSIONS ARE ALONG AND ACROSS) SHALL BE SHOWN ON ALL DIMENSIONED PARTS.
 DIMENSIONAL SCALE: AS SHOWN ON SHEET 1-10.
 * FRAME WITH CARBONIZING BLS INTERMEDIATE COAT WITH CARBOHARD 803 TOP COAT WITH CARBOHARD 133 LH APPLIED IN SHOP. TOUCH UP REQUIRED IN THE FIELD DUE TO CHANGE FROM HANGING AND ERECTION BY OTHERS.



Vermont Agency of Transportation
RECEIVED
 CK'D BY GML CK'D BY JEL
 11:20 am, Mar 19, 2012
 RESUBMIT APPROVED X
 BY KMH DATE 3/19/2012

NOTE: FOR LAMBER DIMENSIONS SEE SHEET 1-10

SHEET	MARK	QTY	DESCRIPTION	LENGTH	REMARKS	W/L
1	04	1	W/100	100'-0"	W/100	100'-0"
1	05	1	W/100	100'-0"	W/100	100'-0"
1	06	1	W/100	100'-0"	W/100	100'-0"
1	07	1	W/100	100'-0"	W/100	100'-0"
1	08	1	W/100	100'-0"	W/100	100'-0"
1	09	1	W/100	100'-0"	W/100	100'-0"
1	10	1	W/100	100'-0"	W/100	100'-0"
1	11	1	W/100	100'-0"	W/100	100'-0"
1	12	1	W/100	100'-0"	W/100	100'-0"
1	13	1	W/100	100'-0"	W/100	100'-0"
1	14	1	W/100	100'-0"	W/100	100'-0"
1	15	1	W/100	100'-0"	W/100	100'-0"
1	16	1	W/100	100'-0"	W/100	100'-0"
1	17	1	W/100	100'-0"	W/100	100'-0"
1	18	1	W/100	100'-0"	W/100	100'-0"
1	19	1	W/100	100'-0"	W/100	100'-0"
1	20	1	W/100	100'-0"	W/100	100'-0"
1	21	1	W/100	100'-0"	W/100	100'-0"
1	22	1	W/100	100'-0"	W/100	100'-0"
1	23	1	W/100	100'-0"	W/100	100'-0"
1	24	1	W/100	100'-0"	W/100	100'-0"
1	25	1	W/100	100'-0"	W/100	100'-0"
1	26	1	W/100	100'-0"	W/100	100'-0"
1	27	1	W/100	100'-0"	W/100	100'-0"
1	28	1	W/100	100'-0"	W/100	100'-0"
1	29	1	W/100	100'-0"	W/100	100'-0"
1	30	1	W/100	100'-0"	W/100	100'-0"
1	31	1	W/100	100'-0"	W/100	100'-0"
1	32	1	W/100	100'-0"	W/100	100'-0"
1	33	1	W/100	100'-0"	W/100	100'-0"
1	34	1	W/100	100'-0"	W/100	100'-0"
1	35	1	W/100	100'-0"	W/100	100'-0"
1	36	1	W/100	100'-0"	W/100	100'-0"
1	37	1	W/100	100'-0"	W/100	100'-0"
1	38	1	W/100	100'-0"	W/100	100'-0"
1	39	1	W/100	100'-0"	W/100	100'-0"
1	40	1	W/100	100'-0"	W/100	100'-0"
1	41	1	W/100	100'-0"	W/100	100'-0"
1	42	1	W/100	100'-0"	W/100	100'-0"
1	43	1	W/100	100'-0"	W/100	100'-0"
1	44	1	W/100	100'-0"	W/100	100'-0"
1	45	1	W/100	100'-0"	W/100	100'-0"
1	46	1	W/100	100'-0"	W/100	100'-0"
1	47	1	W/100	100'-0"	W/100	100'-0"
1	48	1	W/100	100'-0"	W/100	100'-0"
1	49	1	W/100	100'-0"	W/100	100'-0"
1	50	1	W/100	100'-0"	W/100	100'-0"
1	51	1	W/100	100'-0"	W/100	100'-0"
1	52	1	W/100	100'-0"	W/100	100'-0"
1	53	1	W/100	100'-0"	W/100	100'-0"
1	54	1	W/100	100'-0"	W/100	100'-0"
1	55	1	W/100	100'-0"	W/100	100'-0"
1	56	1	W/100	100'-0"	W/100	100'-0"
1	57	1	W/100	100'-0"	W/100	100'-0"
1	58	1	W/100	100'-0"	W/100	100'-0"
1	59	1	W/100	100'-0"	W/100	100'-0"
1	60	1	W/100	100'-0"	W/100	100'-0"
1	61	1	W/100	100'-0"	W/100	100'-0"
1	62	1	W/100	100'-0"	W/100	100'-0"
1	63	1	W/100	100'-0"	W/100	100'-0"
1	64	1	W/100	100'-0"	W/100	100'-0"
1	65	1	W/100	100'-0"	W/100	100'-0"
1	66	1	W/100	100'-0"	W/100	100'-0"
1	67	1	W/100	100'-0"	W/100	100'-0"
1	68	1	W/100	100'-0"	W/100	100'-0"
1	69	1	W/100	100'-0"	W/100	100'-0"
1	70	1	W/100	100'-0"	W/100	100'-0"
1	71	1	W/100	100'-0"	W/100	100'-0"
1	72	1	W/100	100'-0"	W/100	100'-0"
1	73	1	W/100	100'-0"	W/100	100'-0"
1	74	1	W/100	100'-0"	W/100	100'-0"
1	75	1	W/100	100'-0"	W/100	100'-0"
1	76	1	W/100	100'-0"	W/100	100'-0"
1	77	1	W/100	100'-0"	W/100	100'-0"
1	78	1	W/100	100'-0"	W/100	100'-0"
1	79	1	W/100	100'-0"	W/100	100'-0"
1	80	1	W/100	100'-0"	W/100	100'-0"
1	81	1	W/100	100'-0"	W/100	100'-0"
1	82	1	W/100	100'-0"	W/100	100'-0"
1	83	1	W/100	100'-0"	W/100	100'-0"
1	84	1	W/100	100'-0"	W/100	100'-0"
1	85	1	W/100	100'-0"	W/100	100'-0"
1	86	1	W/100	100'-0"	W/100	100'-0"
1	87	1	W/100	100'-0"	W/100	100'-0"
1	88	1	W/100	100'-0"	W/100	100'-0"
1	89	1	W/100	100'-0"	W/100	100'-0"
1	90	1	W/100	100'-0"	W/100	100'-0"
1	91	1	W/100	100'-0"	W/100	100'-0"
1	92	1	W/100	100'-0"	W/100	100'-0"
1	93	1	W/100	100'-0"	W/100	100'-0"
1	94	1	W/100	100'-0"	W/100	100'-0"
1	95	1	W/100	100'-0"	W/100	100'-0"
1	96	1	W/100	100'-0"	W/100	100'-0"
1	97	1	W/100	100'-0"	W/100	100'-0"
1	98	1	W/100	100'-0"	W/100	100'-0"
1	99	1	W/100	100'-0"	W/100	100'-0"
1	100	1	W/100	100'-0"	W/100	100'-0"

ARC
 ADVANCED RESOURCES & CONST.
 ENTERPRISES, INCORPORATED
 1000 W. GREENMOUNT RD. SUITE 100
 FERRISBURGH, VT 05753
 PHONE: (802) 888-4444 FAX: (802) 888-4444

ORDER 4
 DATE: 03/19/2012
 CHECKED: ETC
 DATE: 03/19/2012

PROJECT NO.: 800 14020
 DWG NO.: 5

T BUCK CONSTRUCTION