

Follow Material Spec 732.04: Steel Beam Bridge Railing

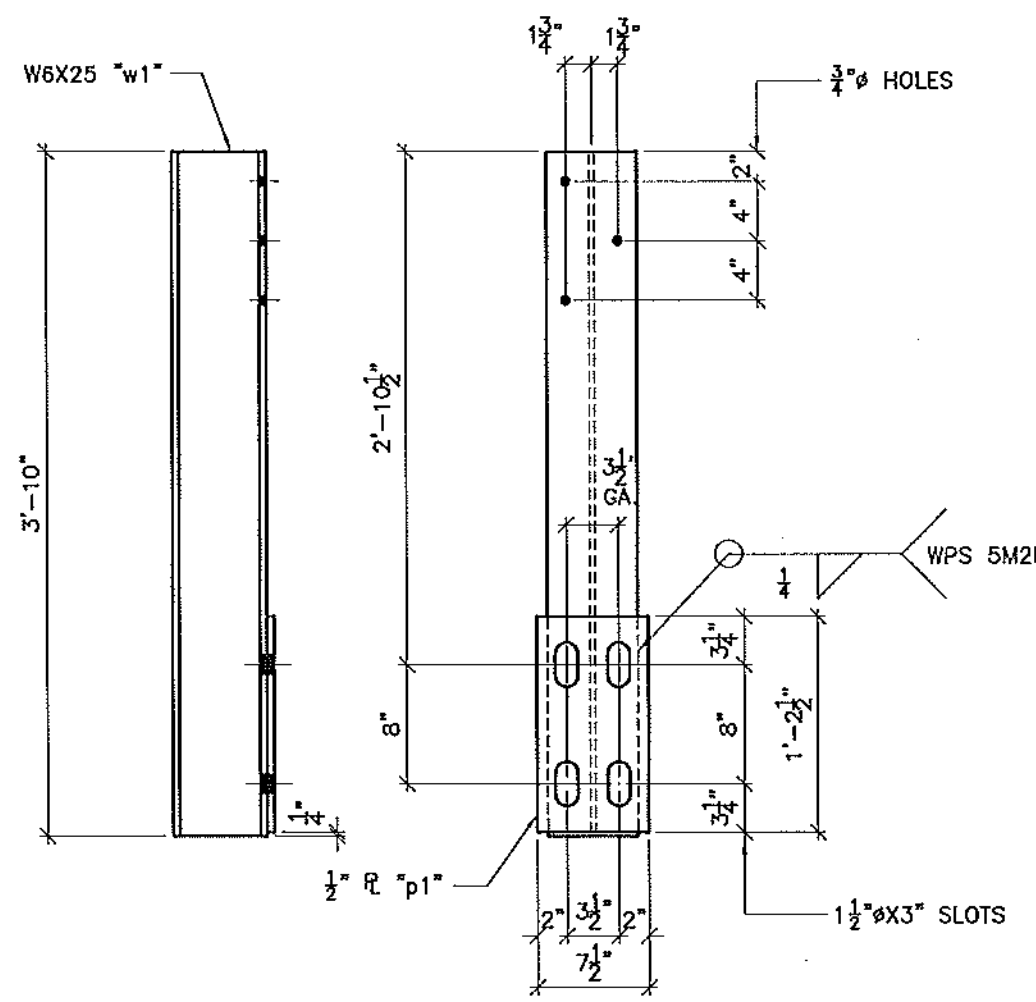
ASTM A572 GRADE 50

A563 GRADE DH

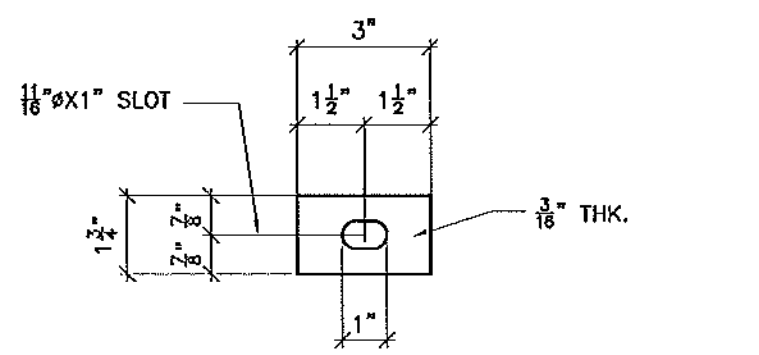
10 GAUGE CORRUGATED RAIL  
AASHTO (M180) CLASS B, TYPE II

BILL OF MATERIAL

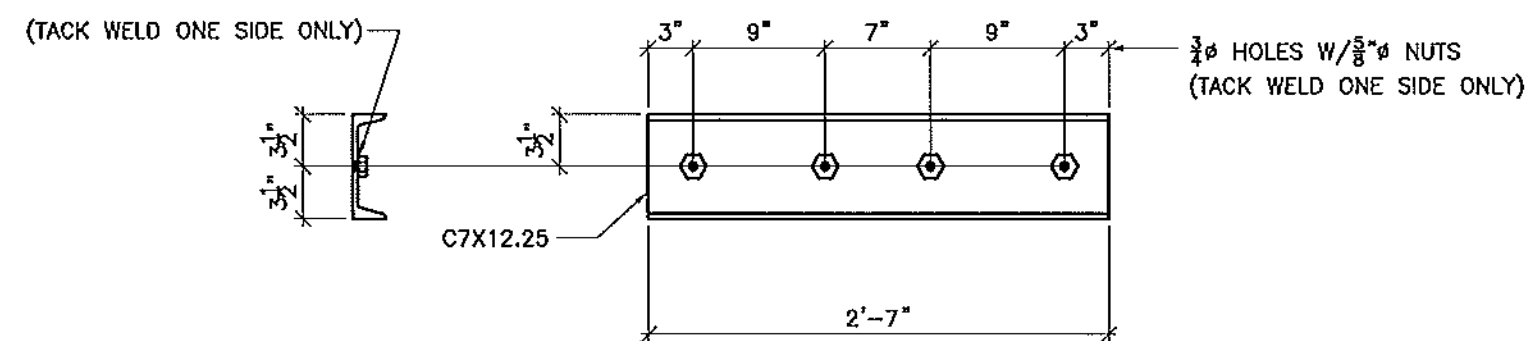
SHIP	SHIP MARK	NO. PCS.	PIECE MARK	DESCRIPTION	LENGTH	REMARKS	MAT'L	WT.
24	ZP1			POSTS				
		24	w1	W6X25	3'-10"		A992	2300
		24	p1	1/2" X 1/2"	1'-2 1/2"		A36	370
8	CS1			C7X12-R6	2'-7"		A36	253
		32		1/2" NUTS			A563	
42	SW1			1/2" X 1/2"	0'-3"		A572 GR50	12
168	AA1			ANCHOR ASS'Y				
		168	dn1	1 1/4" MACH. BOLT	1'-0"	3" MIN THD.	A325	
		168	sn1	1 1/4" SLEEVE NUT	0'-5"	SEE DETAIL	A563	
168	SI			STUD ASS'Y				
		168		1 1/4" THD. STUD	1'-0"	W/2N	A449	
		336		1/2" WASH.		SEE DETAIL	F436	
				FIELD BOLTS				
48	FB1			1/2" BOLT	1'-1"	W/N&2W	A325	
32	FB2			1/2" BOLT	0'-2"	W/N&2W	A325	
48	FB3			1/2" OVAL-THD. BOLT	0'-10"	W/N&W	A325	
32	FB4			1/2" BOLT	0'-2"	W/W	A325	



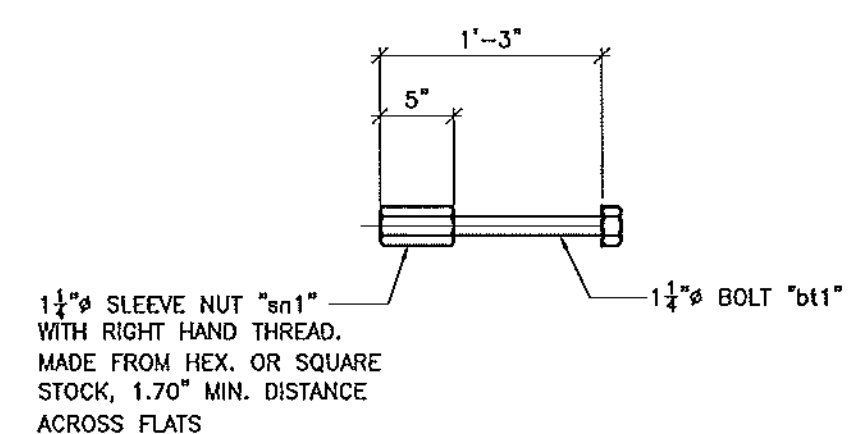
42 - POST ASS'Y - 2P1



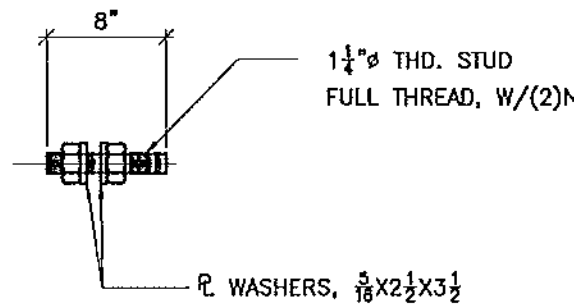
42 - SPECIAL WASHER - SW1



8 - CHANNEL SPLICE - CS1



168 - ANCHOR ASS'Y - AA1



168 - STUD ASS'Y - SI

GALVANIZE AFTER FABRICATION PER AASHTO M111

Vermont Agency of Transportation

**RECEIVED**

CK'D BY GML OK'D BY JTS

3:46 pm, Mar 26, 2012

RESUBMIT APPROVED AS NOTED  
BY KMH DATE 3/28/2012

QUAN.	SIZE	LENGTH	TYPE	FINISH	FLAT	BEV.	FINISH
				ERECTOR BOLTS W/WASH.			
				WASHERS			
				FINISH			
				HOT DIPPED GALVANIZED			
				MATERIAL			
				AASHTO M270 GR. 36			
				HOLES			
				AS NOTED			
				ELECTRODES			
				PER W.P.S.			
				WELDS			
				AS NOTED			
				SURFACE PREP			
				SSPC-SP8			
				NO.	DATE	DESCRIPTION	BY

	<b>ADVANCED RESOURCES &amp; CONST. ENTERPRISES, INCORPORATED</b> P.O. BOX 120 WINDFORD, ME 04947 PHONE: (207) 265-2666 - FAX: (207) 265-4054
DRAFTER: JAC DATE: 2/8/12 CHECKED: MTD JOB: 11-175	<b>BRIDGE RAIL POST DETAILS</b> VERMONT AGENCY OF TRANSPORTATION TOWN OF SPRINGFIELD, IN 6 CLASS B LOCAL ROAD T. BUCK CONSTRUCTION, INC.
PRODUCT NO. BRO 1442(28) DWG. NO. R2	