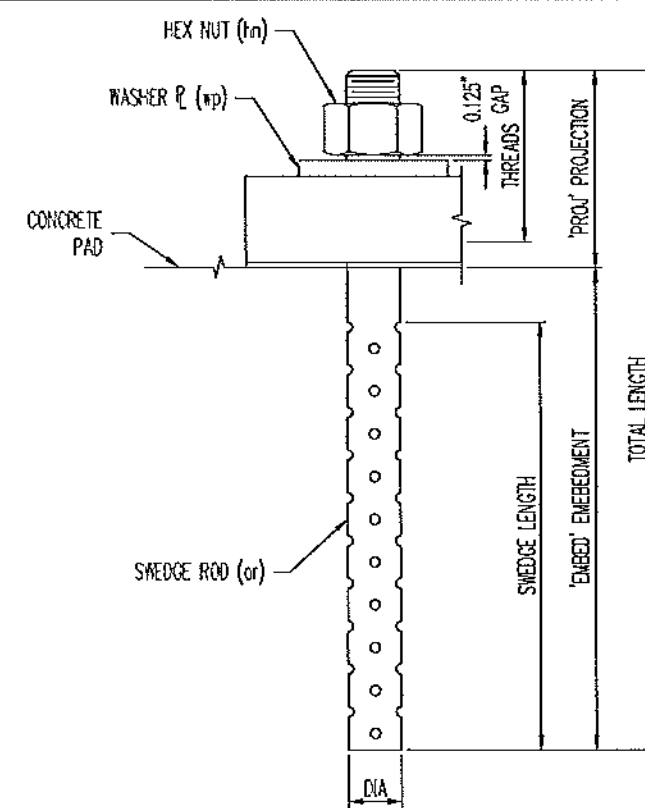


MK	QTY	DESCRIPTION
1A	2	PF-115
1sp1	2	SOLE PLATE
1sp1	2	PISTON
1sp1	2	POT PLATE
1sp1	2	ELASTOMERIC DISC
1br1	6	BRASS RING
1br1	2	MASONRY PLATE
1FA	2	UNDERLAMENT (SS)
1B	4	SHROUD ROD (SS)
1C	4	HEAVY HEX NUT (SS)
1D	4	WASHER PLATE (SS)

HLMR BEARING ASSEMBLY LOCATION & LOAD DESIGN INFORMATION (PF)															
MK	QTY	STRUCTURE	BEARING TYPE	LOCATION	MAX VERT. SERVICE	MAX VERT. STRENGTH	MAX HORIZ. SERVICE	MAX HORIZ. STRENGTH	LONG. WEIGHT	TRANS. WEIGHT	ROTATION (RAD)	HEIGHT TO EMBEDED	HEIGHT IN PLANS	DIFFERENCE IN PLANS	UNDERLAMENT IN HEIGHT (1/A)
1A	2	Bridge No. 57	PF-115	ABUTMENT 2: G2, G3	115.0 kips	179.0 kips	28.0 kips	45.0 kips	0	0	0.03	5.382	9.000	-3.618	YES

ELASTOMERIC DISC SCHEDULE (PF)				
ASSEM MK	PIECE MK	QTY	ELASTOMERIC DISC DIMENSIONS	ELASTOMER MATERIAL
1A	1sp1	2	0.750 X 6.500	Nesoprene, 504 / -5 Duro Gr.3

BRASS RING SCHEDULE (PF)				
ASSEM MK	PIECE MK	QTY	BRASS RING DIMENSIONS	BRASS MATERIAL
1A	1br1	6	0.091 X 0.375 X 6.500	B19 H14-Hard

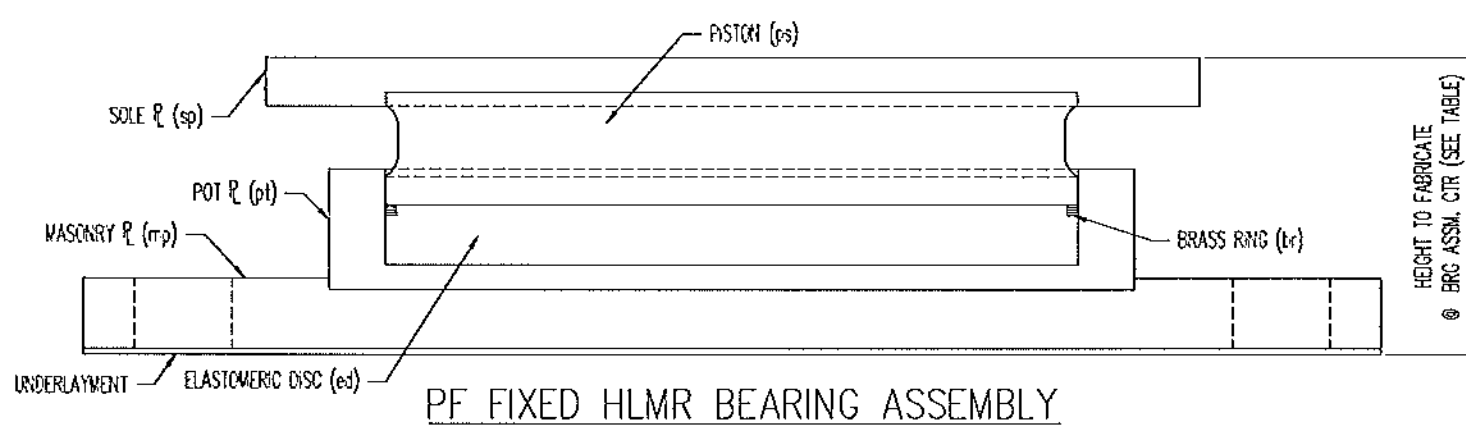


ANCHOR ROD SCHEDULE (PF)										
ASSEM MK	PIECE MK	QTY	ØA	LENGTH	PROJ. EMBED	REMARKS	LOCATION	MATERIAL	COATING	
1B	1A	2	1.500	20.000	5.000	15.000	4" Ø rods, 14" embed	ABUTMENT 2: G2	F1554 GR.36	AT53-10G
1B	1A	2	1.500	20.000	5.000	15.000	4" Ø rods, 14" embed	ABUTMENT 2: G3	F1554 GR.36	AT53-10G

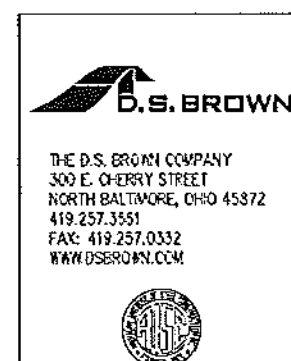
NUT SCHEDULE (PF)					
ASSEM MK	PIECE MK	QTY	ØA	MATERIAL	COATING
1C	1A	4	1.250	A503-EM or A194-2H	AT53-10G, Dry Lube & Dye

WASHER SCHEDULE (PF)								
ASSEM MK	PIECE MK	QTY	THICKNESS	WIDTH	LENGTH	REMARKS	MATERIAL	COATING
1D	1A	4	0.375	3.000	3.000	#1.625" HOLE Ø CIR	A36	A193-10G

* SL = SHIPPED UNCOAT
 SEE SHE. 02 FOR SHIP ASSEMBLY DETAILS.
 SEE SHE. 011 FOR GENERAL NOTES & COATING UNITS.
 ALL DIMENSIONS IN INCHES UNLESS OTHERWISE NOTED



Vermont Agency of Transportation
RECEIVED
 CK'D BY GML OK'D BY JEL
 8:53 am, Mar 29, 2012
 RESUBMIT APPROVED X
 BY KMH DATE 3/29/2012



REV.	DESCRIPTION	DATE	DET.	CHK.
1	LOCATION --- TOWN HIGHWAY 6 BRIDGE NO. 57			
2	BRIDGE --- 57	3/29/12	1112-3	2 OF 2
3	PROJECT NO. --- BRD 1442(26)			
4	PROJECT NAME --- SPRINGFIELD			
5	DESIGNER --- VDOT			
6	CUSTOMER --- T. BUCK CONSTRUCTION, INC.			

NO.	N.T.S.	REVISED	DATE	BY	CHK.	QTY
1			1/28/12			
2						
3						
4						
5						
6						
7						
8						
9						
10						
11						
12						
13						
14						
15						
16						
17						
18						
19						
20						
21						
22						
23						
24						
25						
26						
27						
28						
29						
30						
31						
32						
33						
34						
35						
36						
37						
38						
39						
40						
41						
42						
43						
44						
45						
46						
47						
48						
49						
50						
51						
52						
53						
54						
55						
56						
57						
58						
59						
60						
61						
62						
63						
64						
65						
66						
67						
68						
69						
70						
71						
72						
73						
74						
75						
76						
77						
78						
79						
80						
81						
82						
83						
84						
85						
86						
87						
88						
89						
90						
91						
92						
93						
94						
95						
96						
97						
98						
99						
100						