

STONE FILL, TYPE II
 STA 95+65.00 - 96+95.50 RT
 STA 97+79.50 - 98+32.95 RT

REMOVAL OF EXISTING FENCE
 STA 97+61 - STA 98+50 RT
 (SEE GENERAL NOTES)

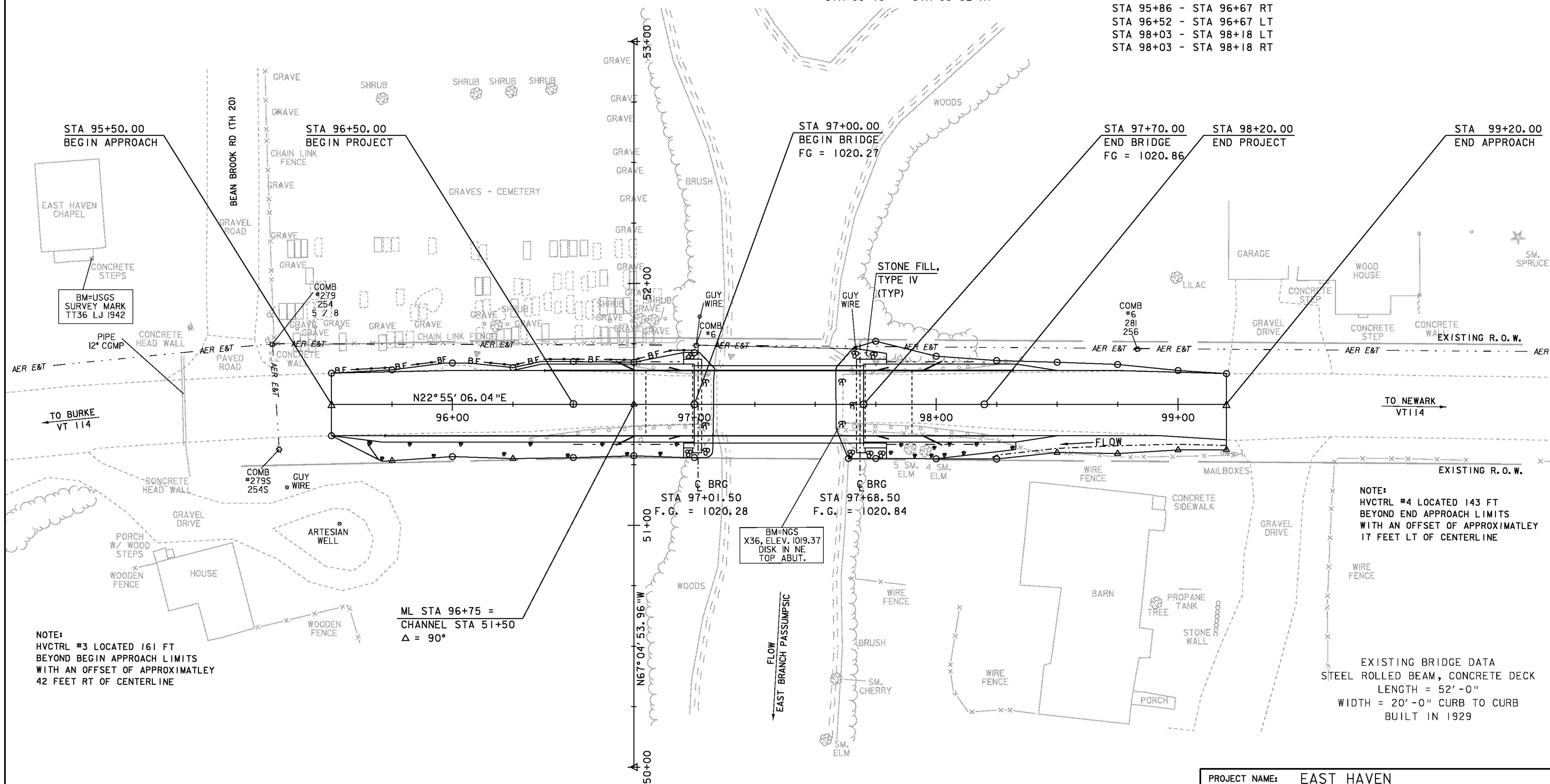
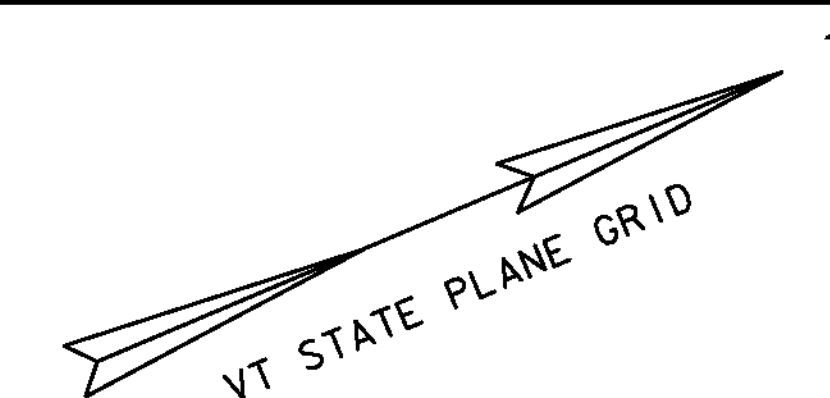
REMOVAL AND DISPOSAL OF GUARDRAIL
 STA 96+32 - STA 97+07 RT
 STA 96+60 - STA 97+07 LT
 STA 97+61 - STA 98+21 RT
 STA 97+61 - STA 98+36 LT

MANUFACTURED TERMINAL SECTION, TANGENT
 STA 95+72 - STA 95+86 RT
 STA 96+38 - STA 96+52 LT
 STA 98+18 - STA 98+32 LT
 STA 98+18 - STA 98+32 RT

**SPECIAL PROVISION (BRIDGE RAILING,
 GALVANIZED 3 RAIL BOX BEAM)**
 STA 96+99 - STA 97+71 LT & RT

**SPECIAL PROVISION (GUARDRAIL APPROACH
 SECTION, GALVANIZED 3 RAIL BOX BEAM)**
 STA 96+67 - STA 96+99 LT & RT
 STA 97+71 - STA 98+03 LT & RT

**SPECIAL PROVISION (BOX BEAM
 GUARDRAIL, W/ 8 FT POSTS)**
 STA 95+86 - STA 96+67 RT
 STA 96+52 - STA 96+67 LT
 STA 98+03 - STA 98+18 LT
 STA 98+03 - STA 98+18 RT



NOTE:
 HVCTRL #3 LOCATED 161 FT
 BEYOND BEGIN APPROACH LIMITS
 WITH AN OFFSET OF APPROXIMATELY
 42 FEET RT OF CENTERLINE

ML STA 96+75 =
 CHANNEL STA 51+50
 Δ = 90°

NOTE:
 HVCTRL #4 LOCATED 143 FT
 BEYOND END APPROACH LIMITS
 WITH AN OFFSET OF APPROXIMATELY
 17 FEET LT OF CENTERLINE

EXISTING BRIDGE DATA
 STEEL ROLLED BEAM, CONCRETE DECK
 LENGTH = 52'-0"
 WIDTH = 20'-0" CURB TO CURB
 BUILT IN 1929

LAYOUT SHEET
 SCALE 1" = 20'-0"
 20 0 20

PROJECT NAME:	EAST HAVEN
PROJECT NUMBER:	BRF 0269(II)
FILE NAME:	s00cl62bdr.dgn
PROJECT LEADER:	K. HIGGINS
DESIGNED BY:	J. LACROIX
LAYOUT SHEET	
PLOT DATE:	08-AUG-2011
DRAWN BY:	R. PELLET
CHECKED BY:	J. LACROIX
SHEET	9 OF 40