

GPS CONTROL POINTS

HVCTRL # 1

STANDARD DISK STAMPED
Rockyknoll AZ MK
N = 483241.56
E = 1459246.83
ELEV. = 387.17

GENERAL LOCATION SUDBURY,VT. TO REACH FROM THE INTERSECTION OF VT.ROUTES 30 AND 73 EAST IN SUDBURY GO EAST ALONG VT.ROUTE 73 FOR 0.3 MI(0.5 KM) TO THE SITE OF THE MARK ON THE LEFT. IT IS ABOUT 15 M (49.2 FT) WEST OF THE ROAD LEADING TO SUDBURYS COUNTRY SCHOOL. THE MARK IS SET FLUSH WITH THE GROUND SURFACE IN THE TOP OF A 30 CM DIAMETER CONCRETE MONUMENT SET 1.4 M (4.6 FT) DEEP. IT IS 2.8 M (9.2 FT) NORTH OF AND ABOUT 0.2 M (0.7 FT) LOWER THAN THE NORTH EDGE OF PAVEMENT OF VT.ROUTE 73, 11.6 M (38.1FT) WEST OF POLE NO.5/59/25T, 8.1M (26.6 FT) EAST OF THE NORTH (OUTLET) END OF A 35 CM METAL CULVERT, AND 1.8 M (5.9 FT) SOUTH OF A WIRE FENCE AND A FIBERGLASS WITNESS POST.

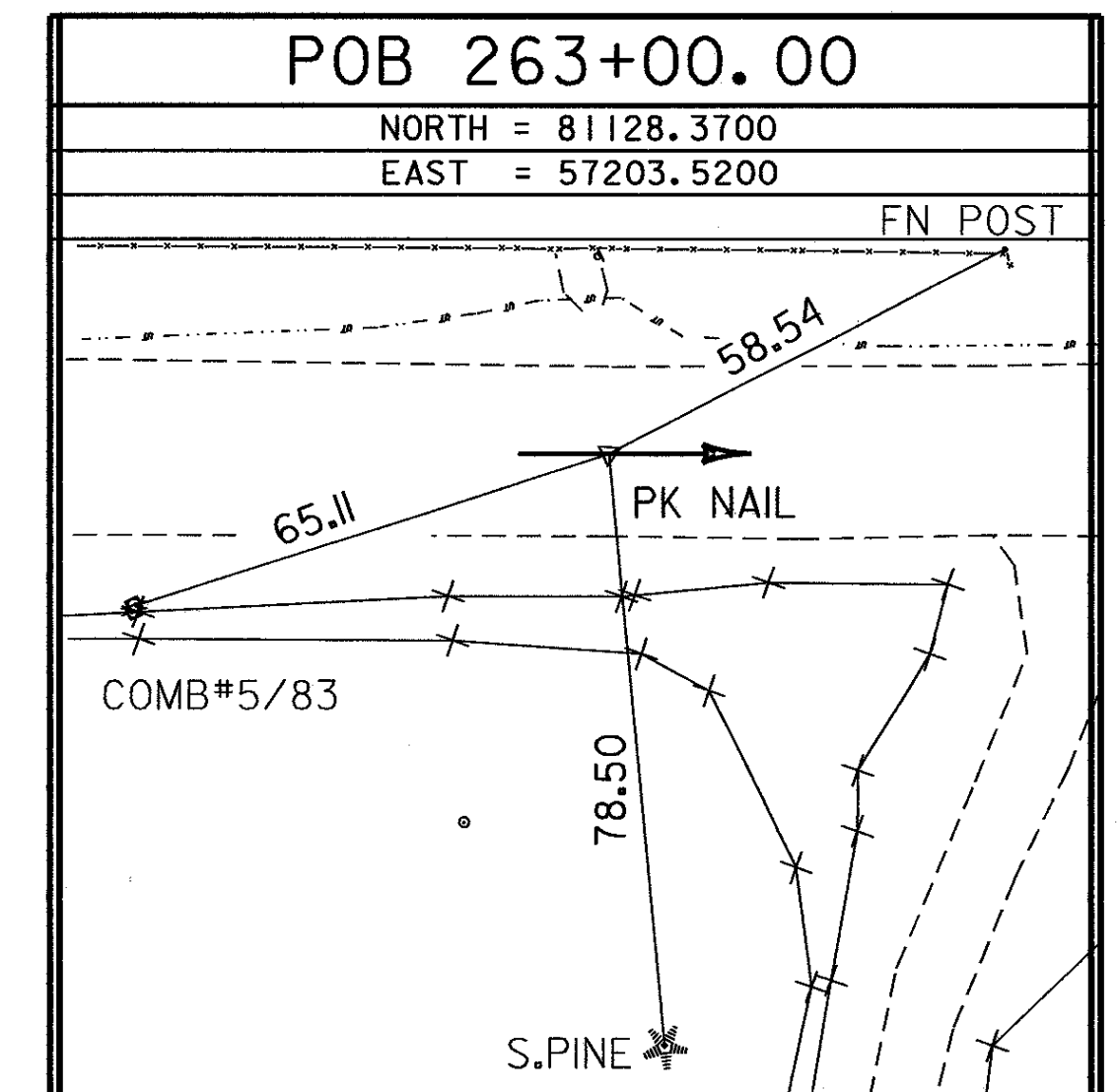
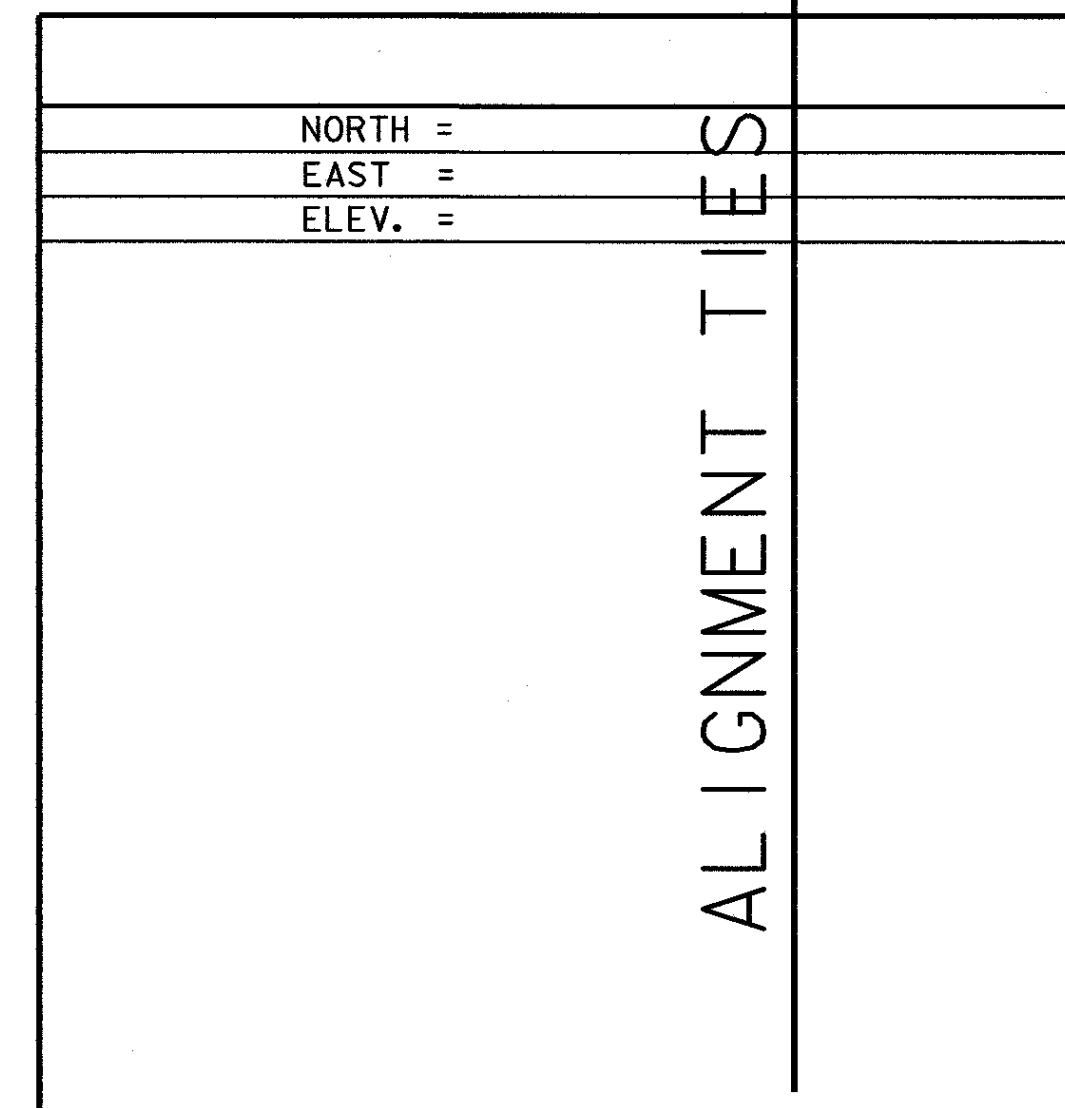
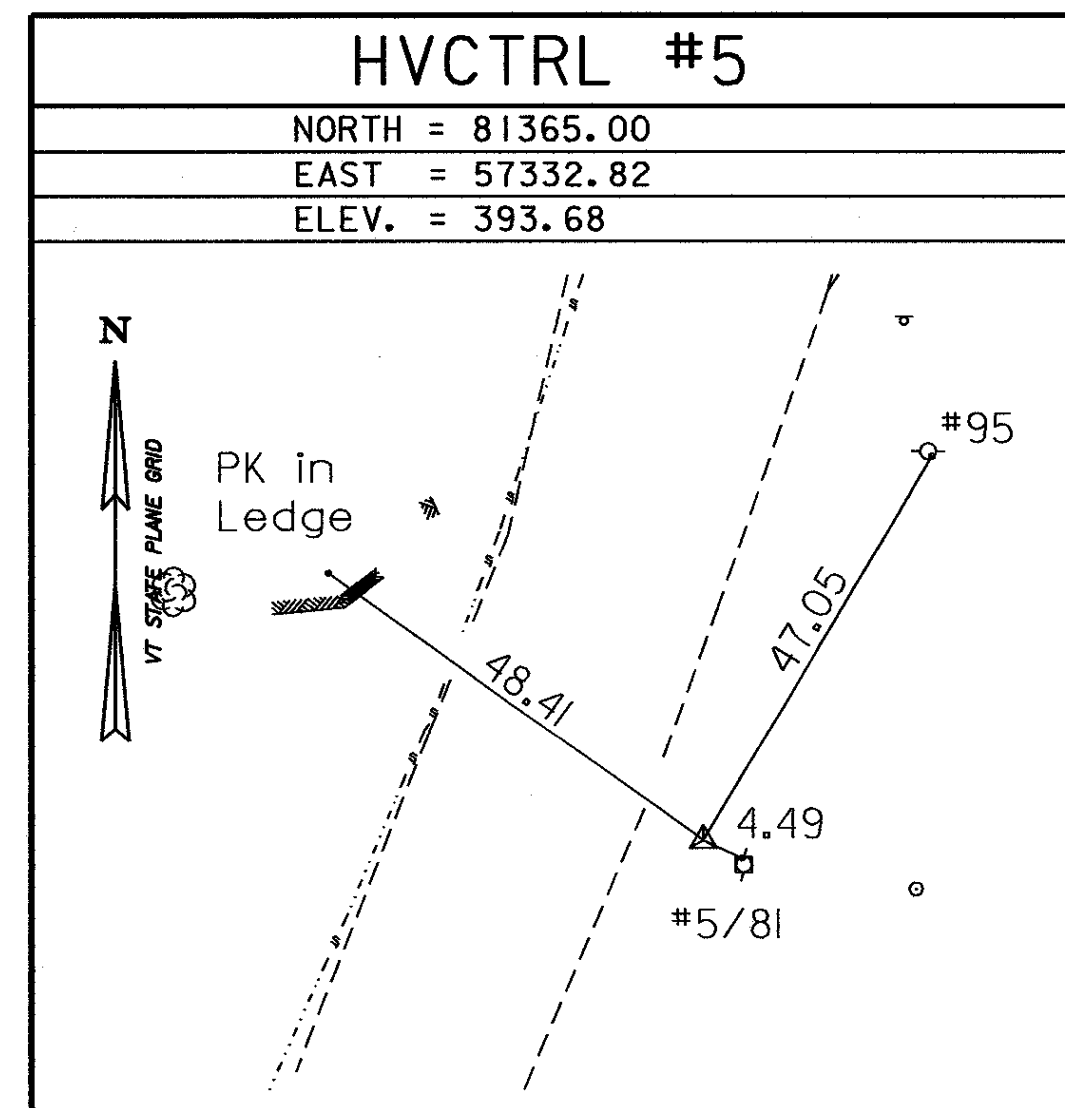
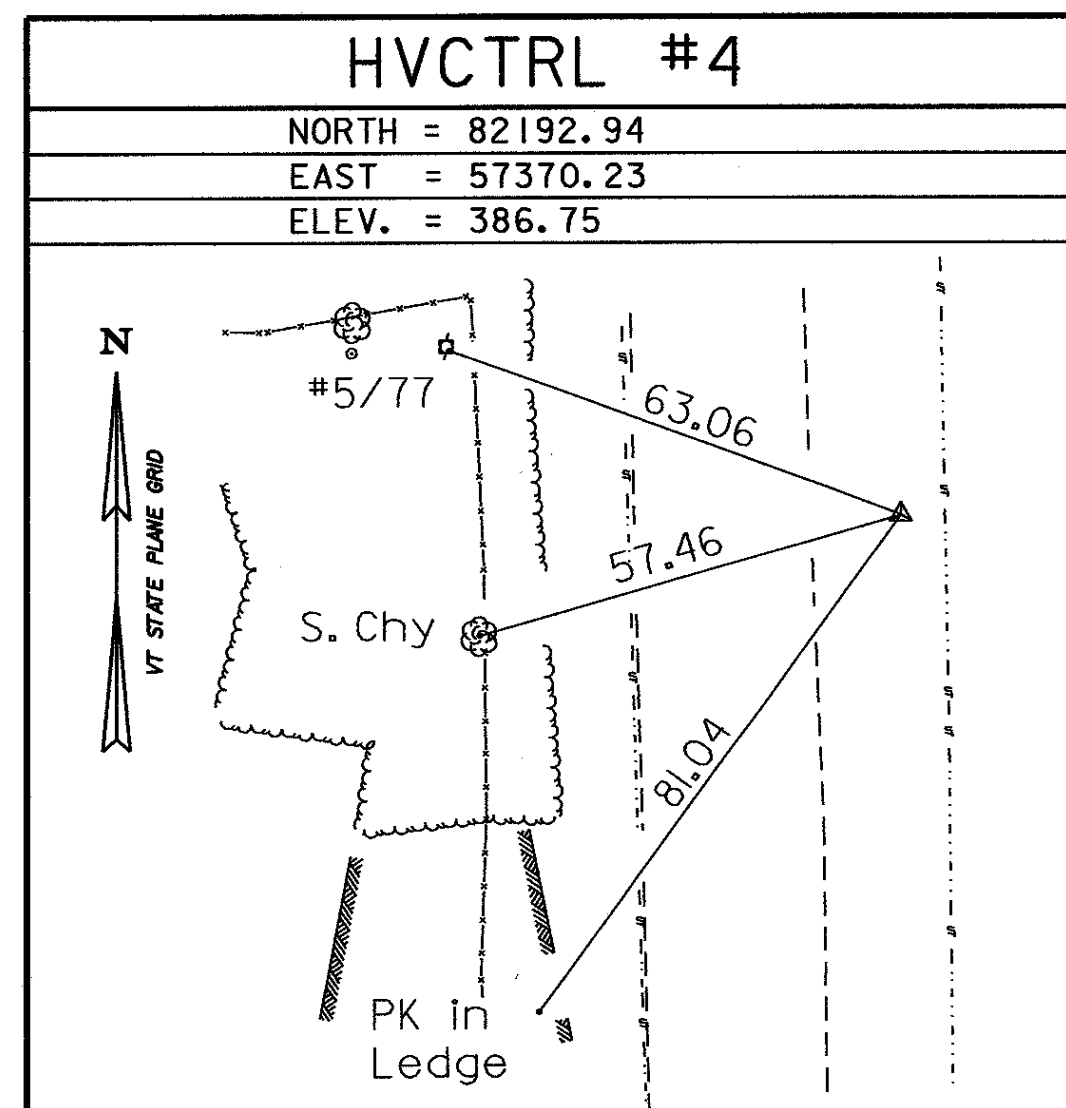
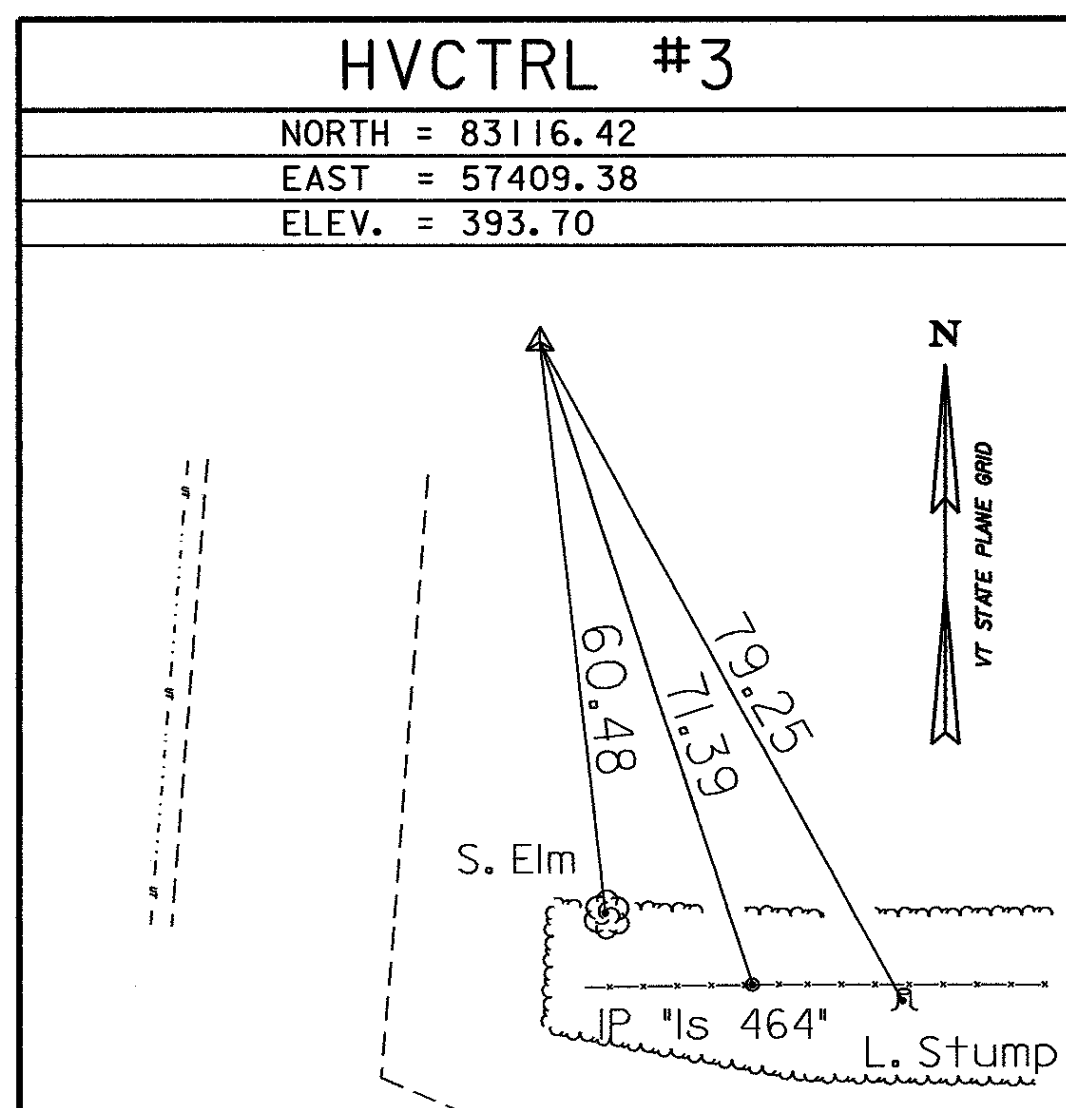
HVCTRL # 2

STANDARD DISK STAMPED
Rockyknoll
N = 484026.93
E = 57397.34
ELEV. = 429.86

GENERAL LOCATION SUDBURY,VT. OWNERSHIP,EMIL COOPER. CONTACT PERSON SEAN STEARNS,P.O.BOX 46 SOUTH NEWFANE,VT. 05351PHONE 802-348-7312. FARM 802-348 7344. THE MARK IS LOCATED IN THE NORTHWEST CORNER OF THE INTERSECTION OF VT.ROUTE 73 EAST, VT.ROUTE 30 AND VAIL ROAD. THE MARK IS SET FLUSH WITH THE GROUND SURFACE IN THE TOP OF A 30 CM DIAMETER CONCRETE MONUMENT SET 1.0 M (3.3 FT) DEEP. IT IS 6.9 M (22.6 FT) WEST OF AND ABOUT 0.1M (0.3 FT) LOWER THAN THE WEST EDGE OF PAVEMENT OF VT.ROUTE 30, 13.6 M (44.6 FT) NORTH OF THE CENTERLINE OF VAIL ROAD, 21.3 M (69.9 FT) SOUTH OF THE SOUTHEAST CORNER OF A BARN, AND 7.2 M (23.6 FT) NORTH OF POLE NO.5/70 AND A FIBERGLASS WITNESS POST.

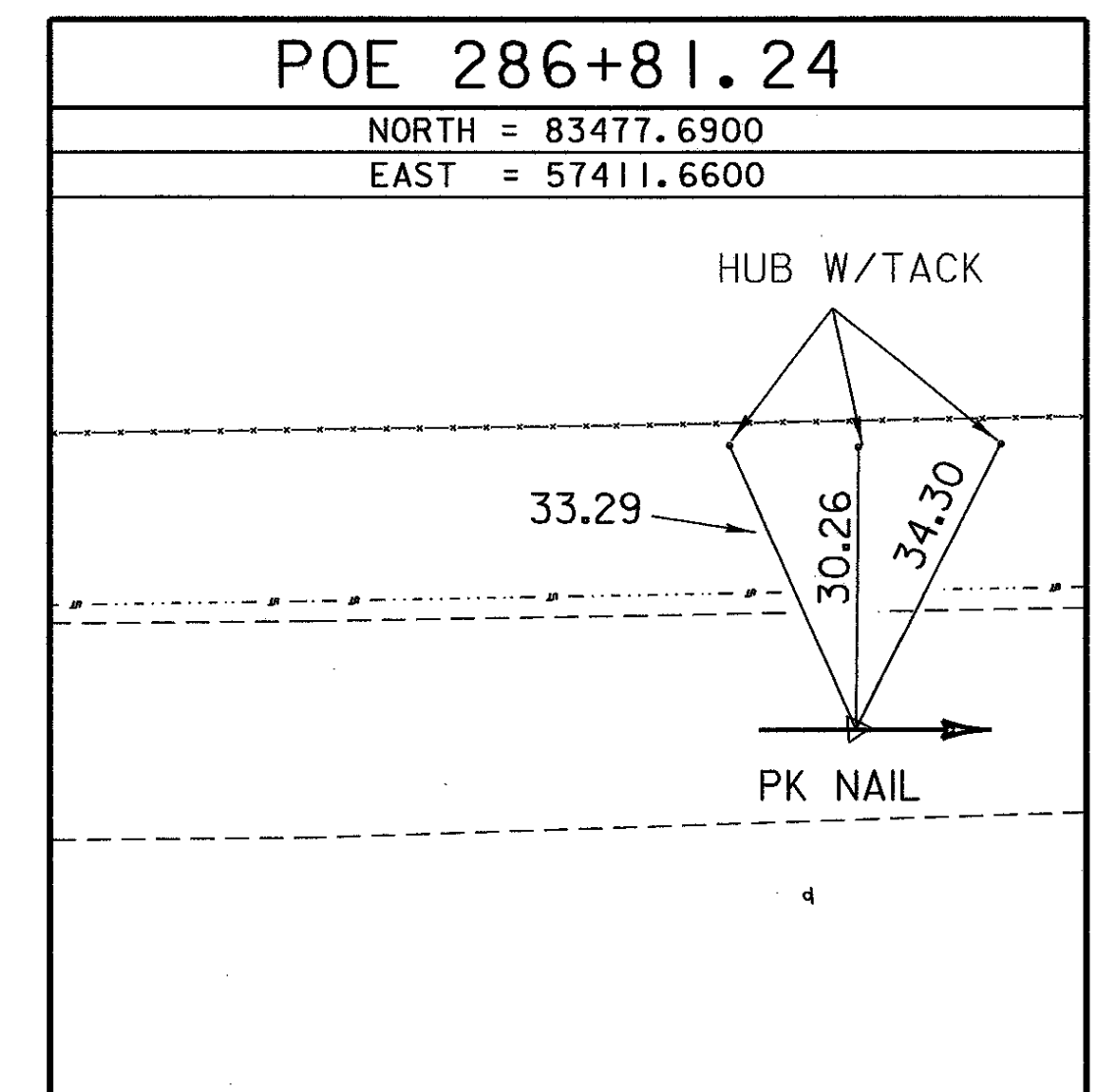
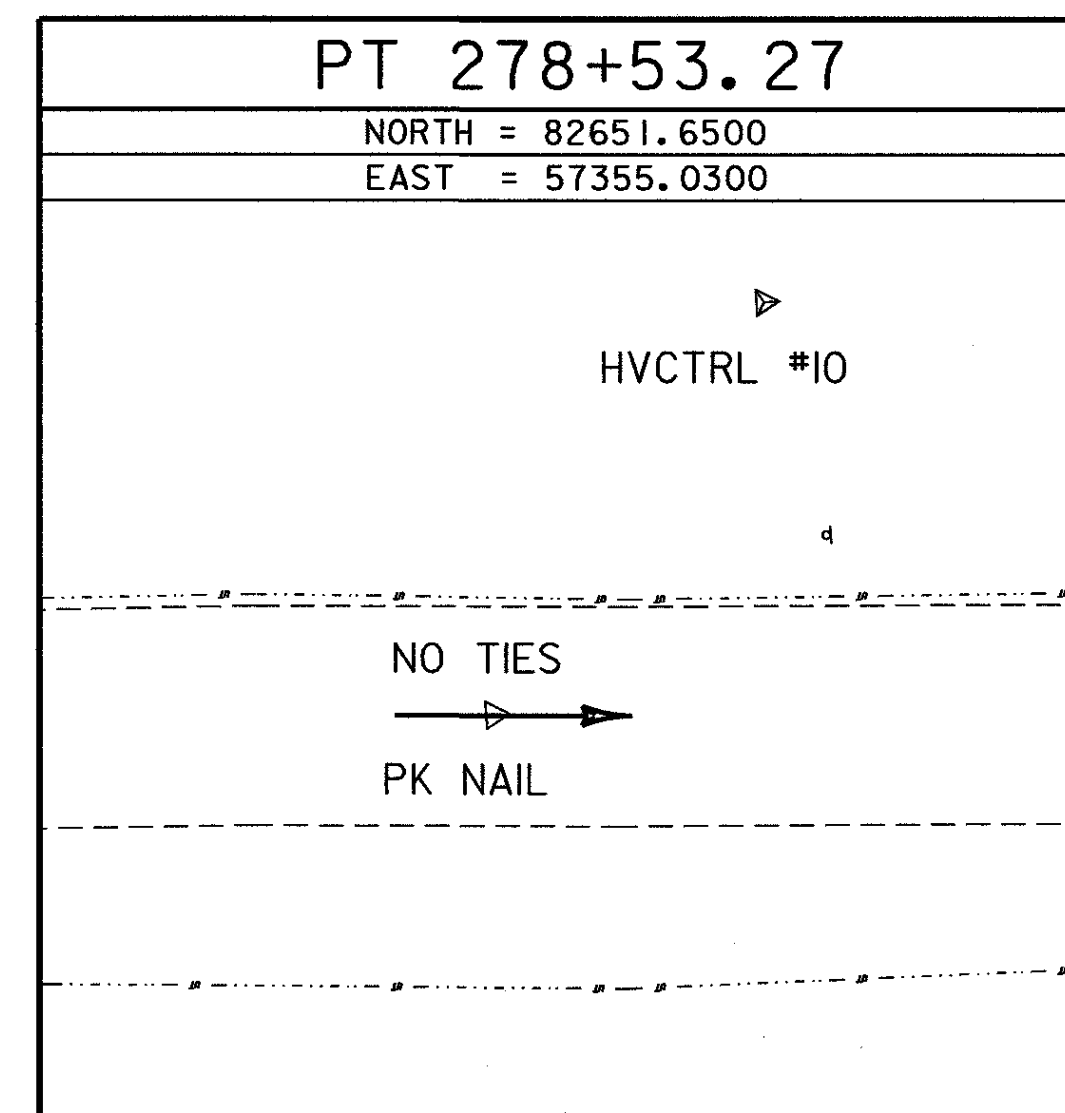
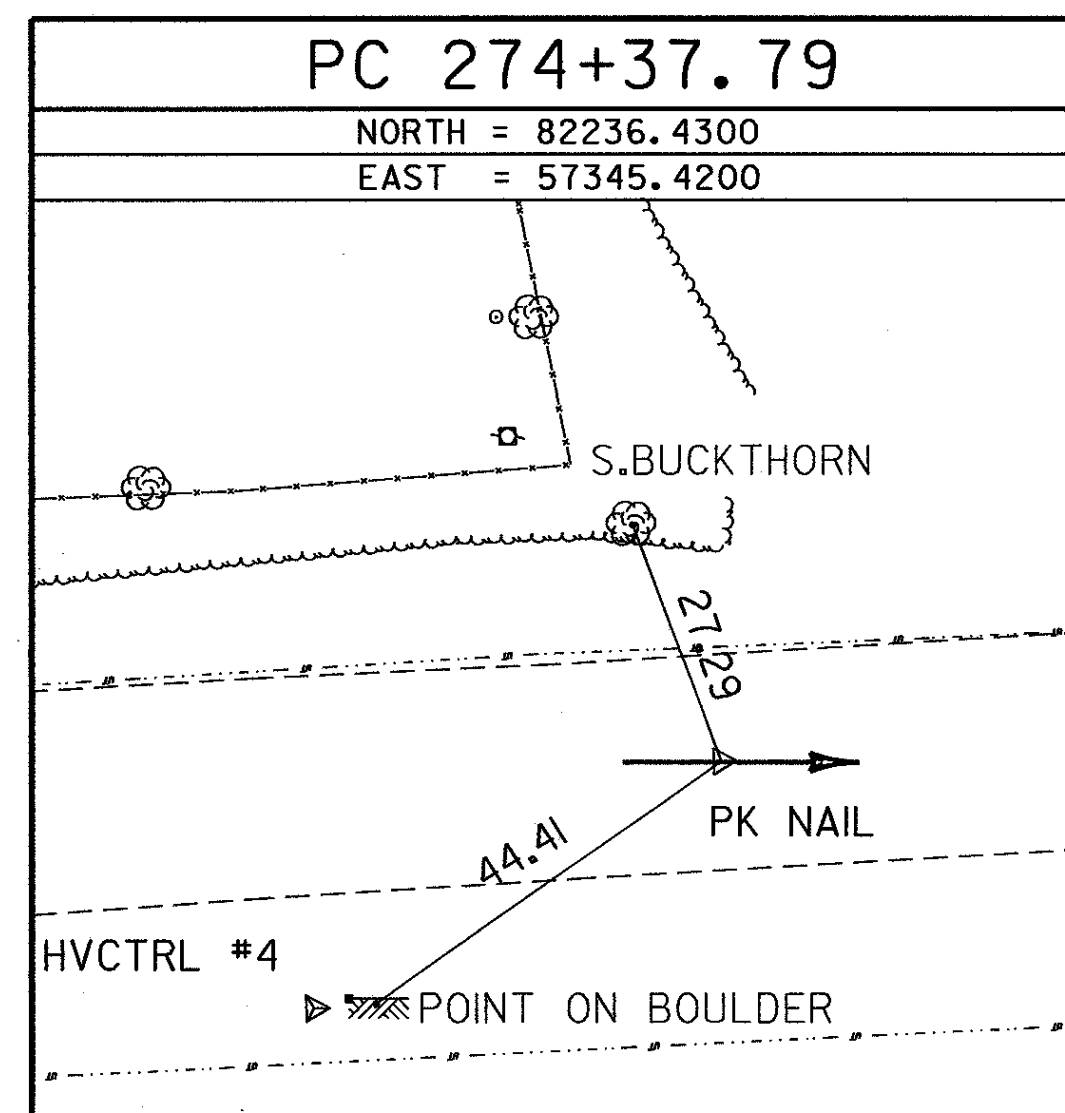
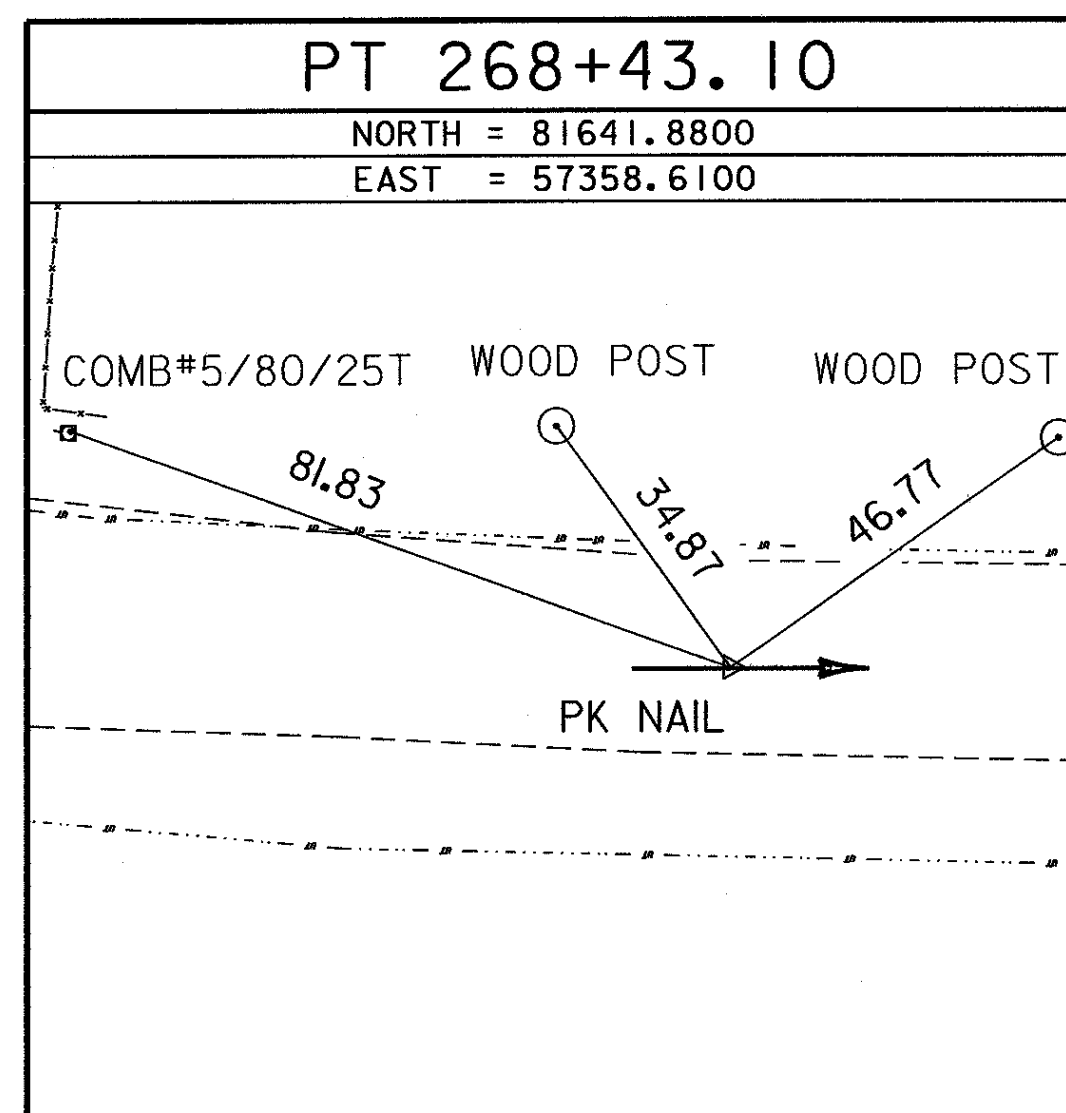
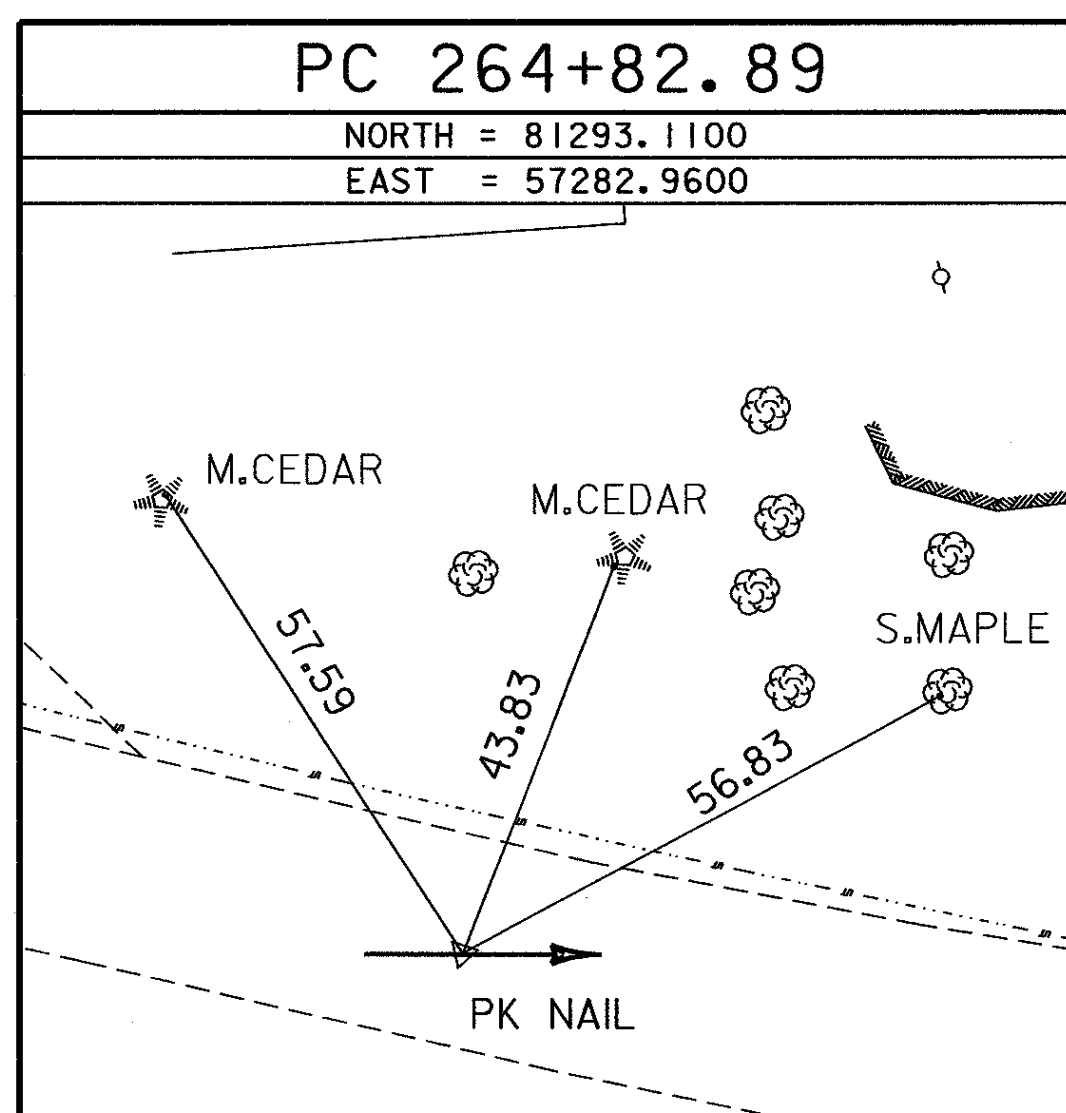
- TO ALLOW THE STATE PLANE COORDINATES TO FIT THE AGENCY DESIGN PLANE, SUBTRACT 400,000 FROM THE NORTHING AND SUBTRACT 1,400,000 FROM THE EASTING.
- DESCRIPTION PROVIDED BY VERMONT AGENCY OF TRANSPORTATION GEODETIC SURVEY UNIT

TRAVERSE TIES



• MAIN TRAVERSE COMPLETED 02/29/00 by L.Orvis & J.Hulet

ALIGNMENT TIES



• ALIGNMENT COMPLETED 04/03/02 BY L.ORVIS & T.WILSON

DATUM
VERTICAL NAVD 88
HORIZONTAL NAD 83/96
ADJUSTMENT COMPASS

PROJECT NAME: SUDBURY
PROJECT NUMBER: ST 0161(10)
FILE NAME: 00c062/survey/xc0621.dgn
PROJECT LEADER:
DESIGNED BY:
PLOT DATE: 30-APR-2002
DRAWN BY: R. Bullock
CHECKED BY:
SHEET 18 OF 84