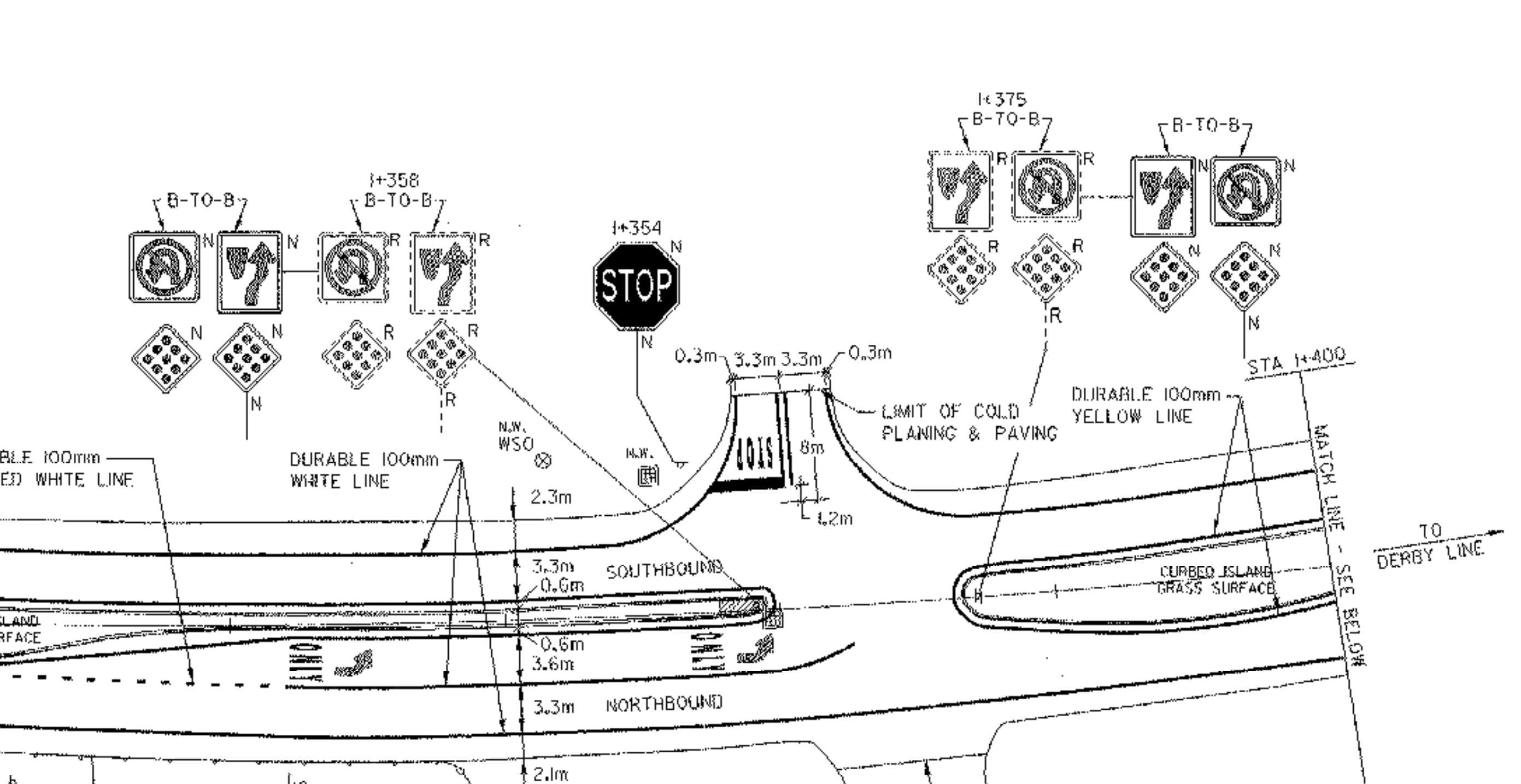
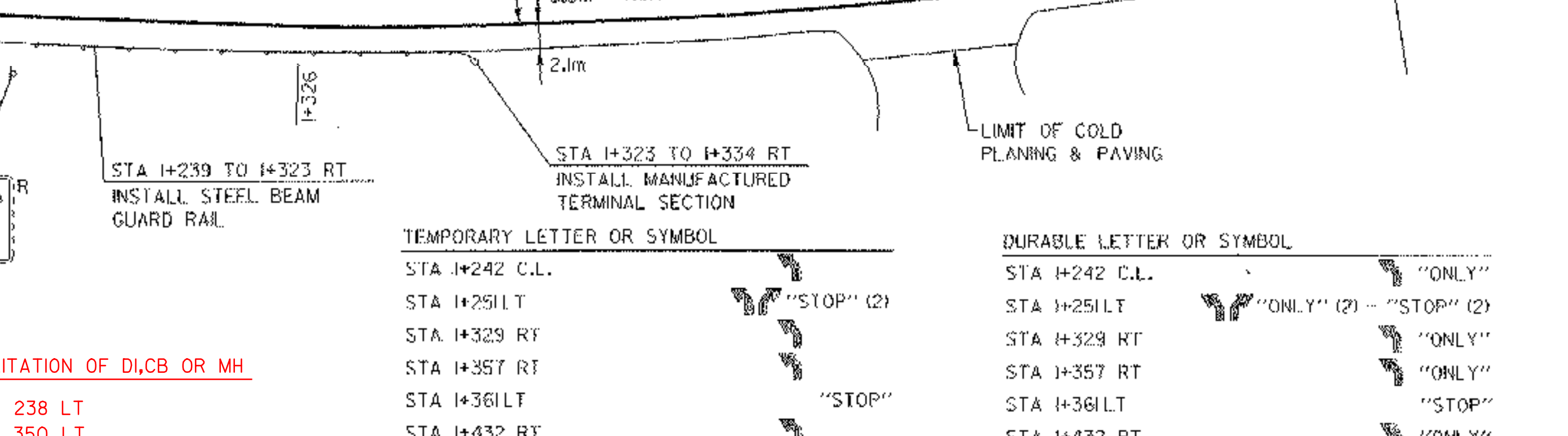
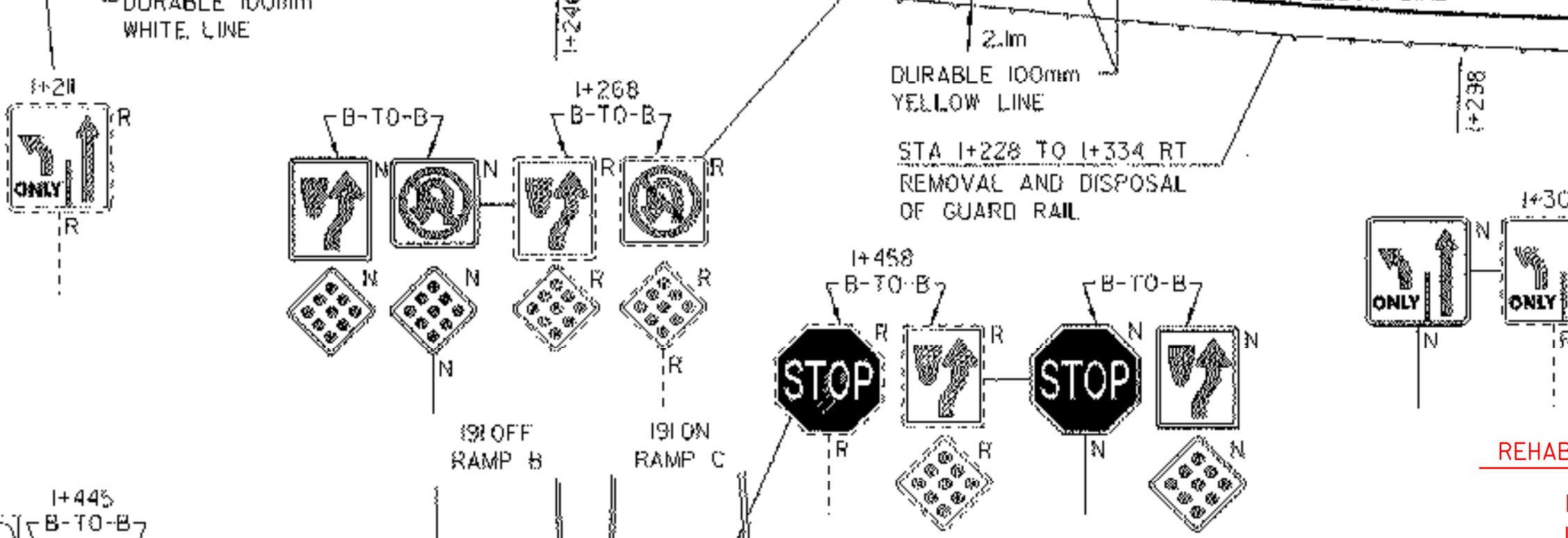


- TEMPORARY AND DURABLE 100mm YELLOW LINE
 - STA I+200 TO I+246
 - DOUBLE SOLID LT
 - STA I+251
 - DOUBLE SOLID LT
 - STA I+266 TO I+360
 - SOLID LT&RT
 - STA I+373 TO I+446
 - SOLID LT&RT
 - STA I+467 TO I+620
 - SOLID LT&RT
 - (WITH CENTERLINE BREAKS FOR TOWN HIGHWAYS)
- TEMPORARY AND DURABLE 500mm STOP BAR
 - STA I+251LT SHOPPING CENTER ENTRANCE
 - STA I+361LT
 - STA I+454 LT
- TEMPORARY AND DURABLE 100mm WHITE LINE
 - STA I+200 TO I+620
 - SOLID LT&RT
 - STA I+200 TO I+255
 - SOLID RT
 - STA I+298 TO I+326
 - DOTTED RT
 - STA I+326 TO I+365
 - SOLID RT
 - STA I+402 TO I+430
 - DOTTED RT
 - STA I+430 TO I+456
 - SOLID RT
 - STA I+500 TO I+620
 - SOLID LT
 - STA I+552 TO I+595
 - DOTTED RT
 - STA I+595 TO I+620
 - SOLID RT
 - (WITH EDGE LINE BREAKS FOR TOWN HIGHWAYS)

- EXTENDED DURABLE LINES
- SHOPPING CENTER ENTRANCE
- STA I+251
- 0.9m
- *3.6m
- *6.0m
- 0.9m
- LIMIT OF COLD PLANING & PAVING (END OF ISLAND)
- *MATCH EXISTING PAVEMENT MARKINGS
- I+251 B-T-O-B
- STOP
- I+358 B-T-O-B
- I+354 STOP
- 0.3m
- 3.3m
- 3.3m
- 0.3m
- LIMIT OF COLD PLANING & PAVING
- DURABLE 100mm YELLOW LINE
- STA I+400
- MATCH LINE - SEE BELOW
- TO DERBY LINE



- TEMPORARY AND DURABLE 150mm WHITE LINE
 - IS/RAMPS B&C
 - STA I+435 TO I+495 LT
- TEMPORARY AND DURABLE 150mm YELLOW LINE
 - IS/RAMPS B&C
 - STA I+455 TO I+475 LT
- TEMPORARY AND DURABLE 200mm WHITE LINE
 - STA I+467 TO I+500 LT
- TEMPORARY AND DURABLE 200mm YELLOW LINE
 - STA I+251LT
 - STA I+267 TO I+298 RT
- TEMPORARY AND DURABLE 300mm WHITE LINE
 - IS/OFF RAMP C
 - STA I+470 LT

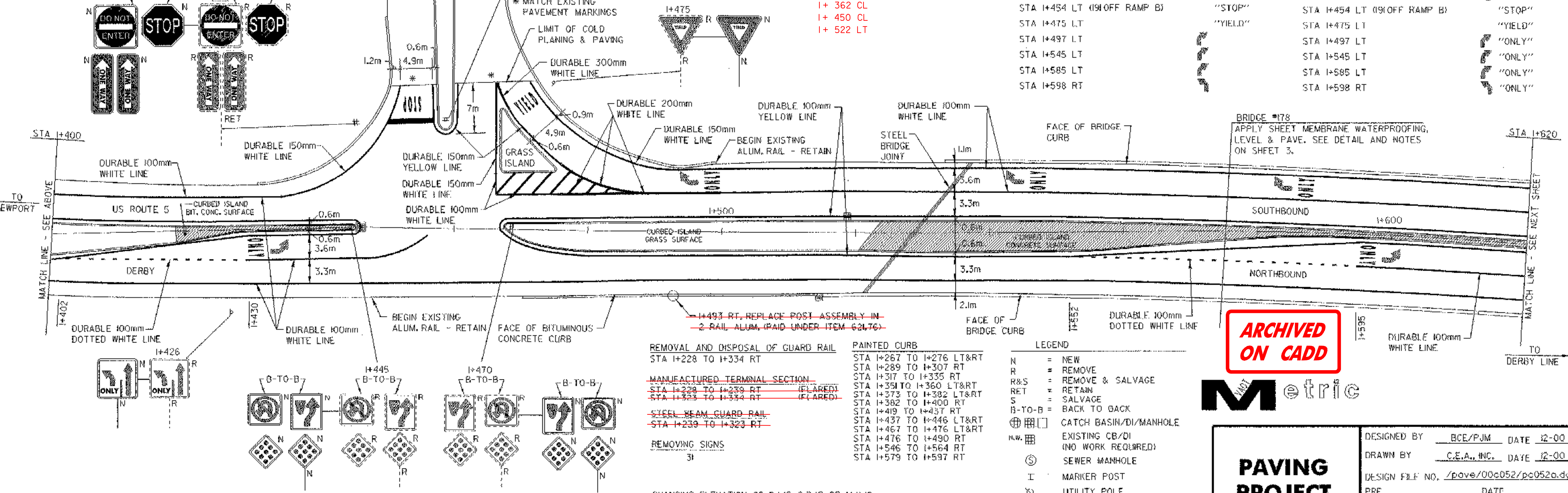


TEMPORARY LETTER OR SYMBOL	DURABLE LETTER OR SYMBOL
STA I+242 C.L.	STA I+242 C.L. "ONLY"
STA I+251LT	STA I+251LT "ONLY" (2) - "STOP" (2)
STA I+329 RT	STA I+329 RT "ONLY"
STA I+357 RT	STA I+357 RT "ONLY"
STA I+361LT	STA I+361LT "STOP"
STA I+432 RT	STA I+432 RT "ONLY"
STA I+454 LT (IS/OFF RAMP B)	STA I+454 LT (IS/OFF RAMP B) "STOP"
STA I+475 LT	STA I+475 LT "YIELD"
STA I+497 LT	STA I+497 LT "ONLY"
STA I+545 LT	STA I+545 LT "ONLY"
STA I+585 LT	STA I+585 LT "ONLY"
STA I+598 RT	STA I+598 RT "ONLY"

MANUFACTURED TERMINAL SECTION
 I+227 ~ I+238 RT
 I+334 ~ I+345, RT
 I+449.8 ~ I+460.8 RT
 I+502.5 ~ I+513.5 LT

STEEL BEAM GUARD RAIL
 I+238 ~ I+334, RT
 I+460.8 ~ I+507 RT
 I+513.5 ~ I+525.4 LT

62L60 ANCHOR FOR SBGR
 I+504 RT
 I+523 LT



- REMOVAL AND DISPOSAL OF GUARD RAIL
 - STA I+228 TO I+334 RT
- MANUFACTURED TERMINAL SECTION
 - STA I+228 TO I+239 RT (FLARED)
 - STA I+323 TO I+334 RT (FLARED)
- STEEL BEAM GUARD RAIL
 - STA I+239 TO I+323 RT
- REMOVING SIGNS
 - 31
- CHANGING ELEVATION OF D.I.'S, C.B.'S OR M.H.'S
 - STA I+230 LT
 - STA I+359 C.L.
 - STA I+446 C.L.
 - STA I+519 LT
- PAINTED CURB
 - STA I+267 TO I+276 LT&RT
 - STA I+289 TO I+307 RT
 - STA I+317 TO I+335 RT
 - STA I+351 TO I+360 LT&RT
 - STA I+373 TO I+382 LT&RT
 - STA I+382 TO I+400 RT
 - STA I+419 TO I+437 RT
 - STA I+437 TO I+446 LT&RT
 - STA I+467 TO I+476 LT&RT
 - STA I+476 TO I+490 RT
 - STA I+546 TO I+564 RT
 - STA I+579 TO I+597 RT
- LEGEND
 - N = NEW
 - R = REMOVE
 - R&S = REMOVE & SALVAGE
 - RET = RETAIN
 - S = SALVAGE
 - B-T-O-B = BACK TO BACK
 - ⊕ [] = CATCH BASIN/DI/MANHOLE
 - ⊕ [] = EXISTING CB/DI (NO WORK REQUIRED)
 - ⊕ [] = SEWER MANHOLE
 - I = MARKER POST
 - ⊕ [] = UTILITY POLE
 - ⊕ [] = UTIL. POLE W/UNDERGROUND UTIL.
 - ⊕ [] = VALVE/CURB STOP
 - ⊕ [] = DRIVE

ARCHIVED ON CADD



PAVING PROJECT LAYOUT #4

DESIGNED BY: BCE/PJM DATE: 12-00
 DRAWN BY: C.E.A., INC. DATE: 12-00
 DESIGN FILE NO.: /pave/00c052/pc052a.dgn
 PRF FILE: pc052ap04.1 DATE PLOTTED: 05-JUN-2003
 PROJ. NAME: DERBY
 PROJ. NO.: STP 2224(1)S
 SHEET 10 OF 27 SHEETS