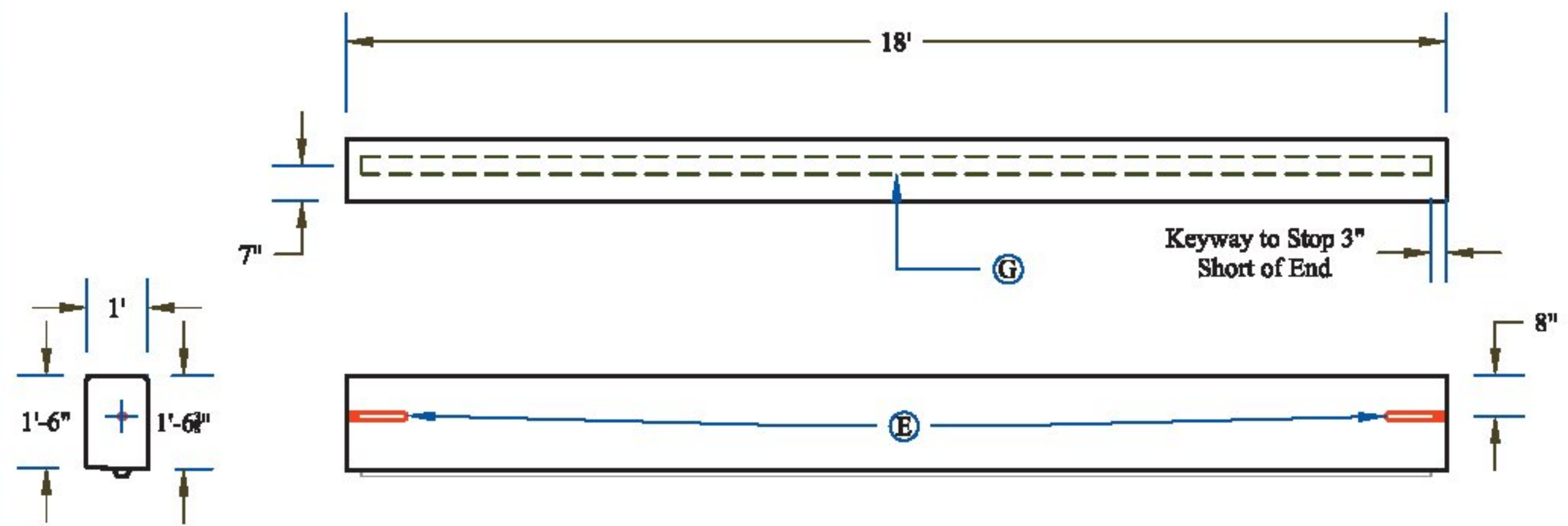
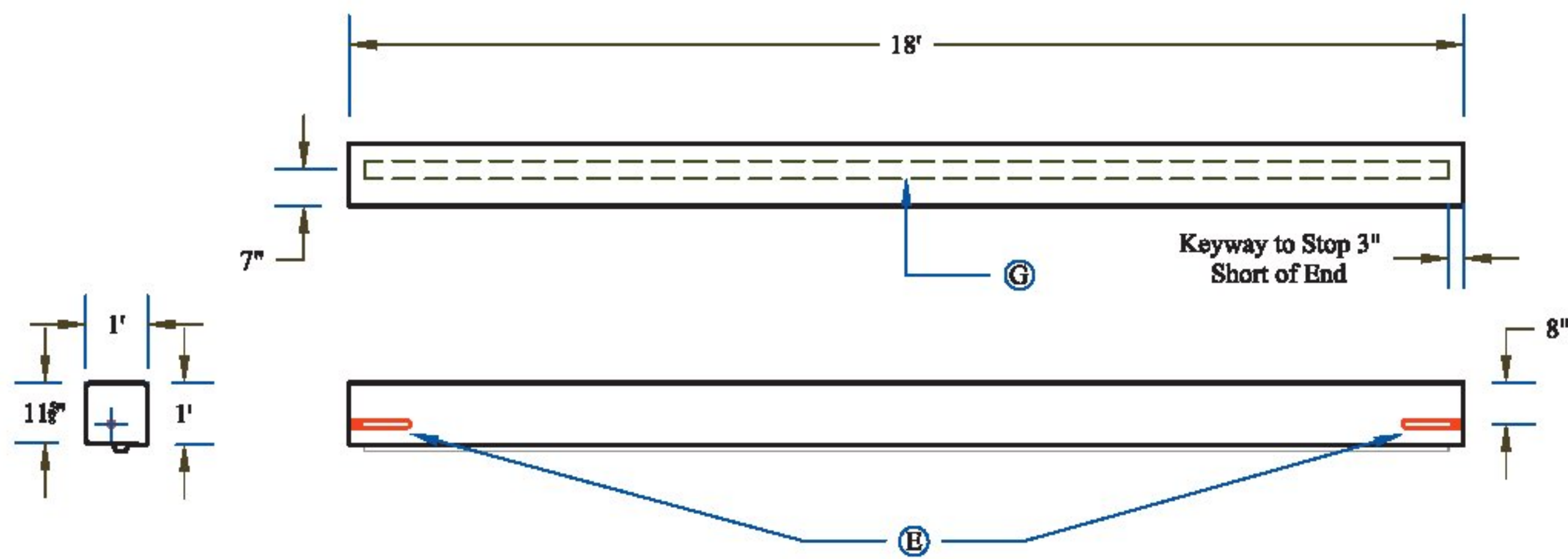


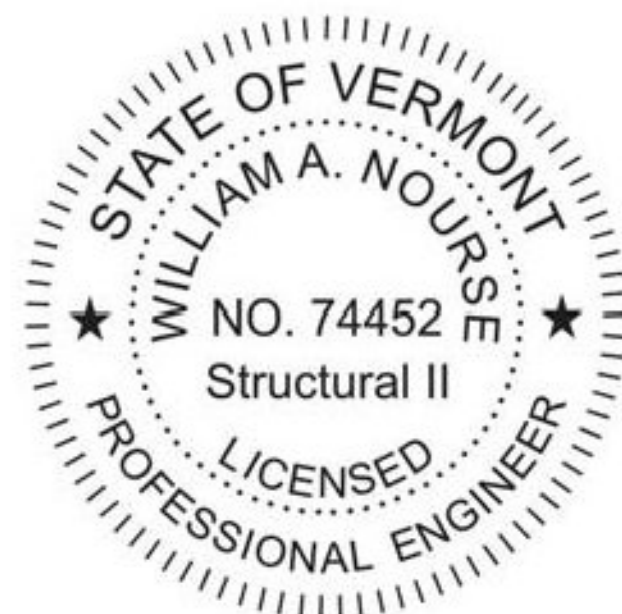
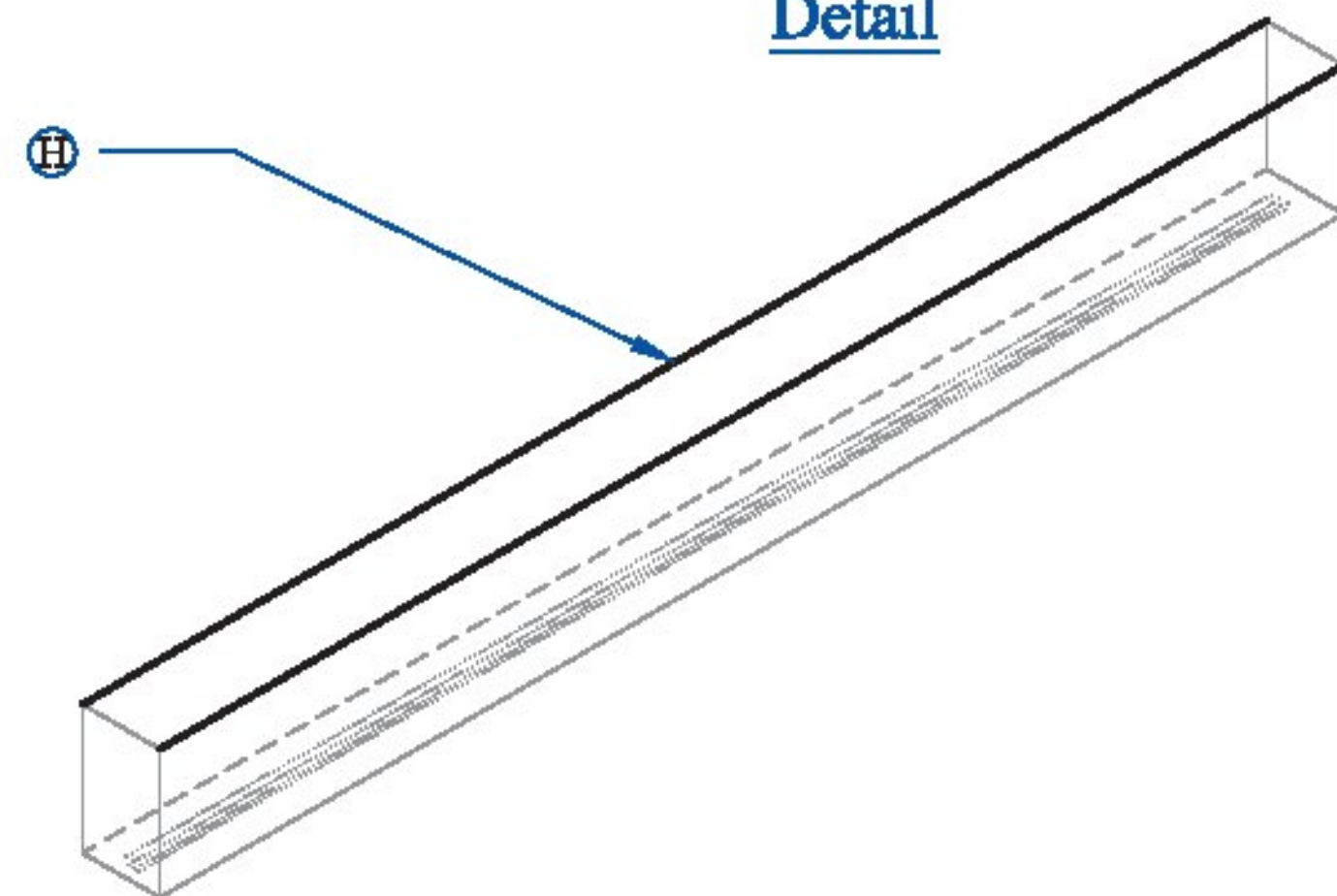
**HW-1 Detail (Inlet)**



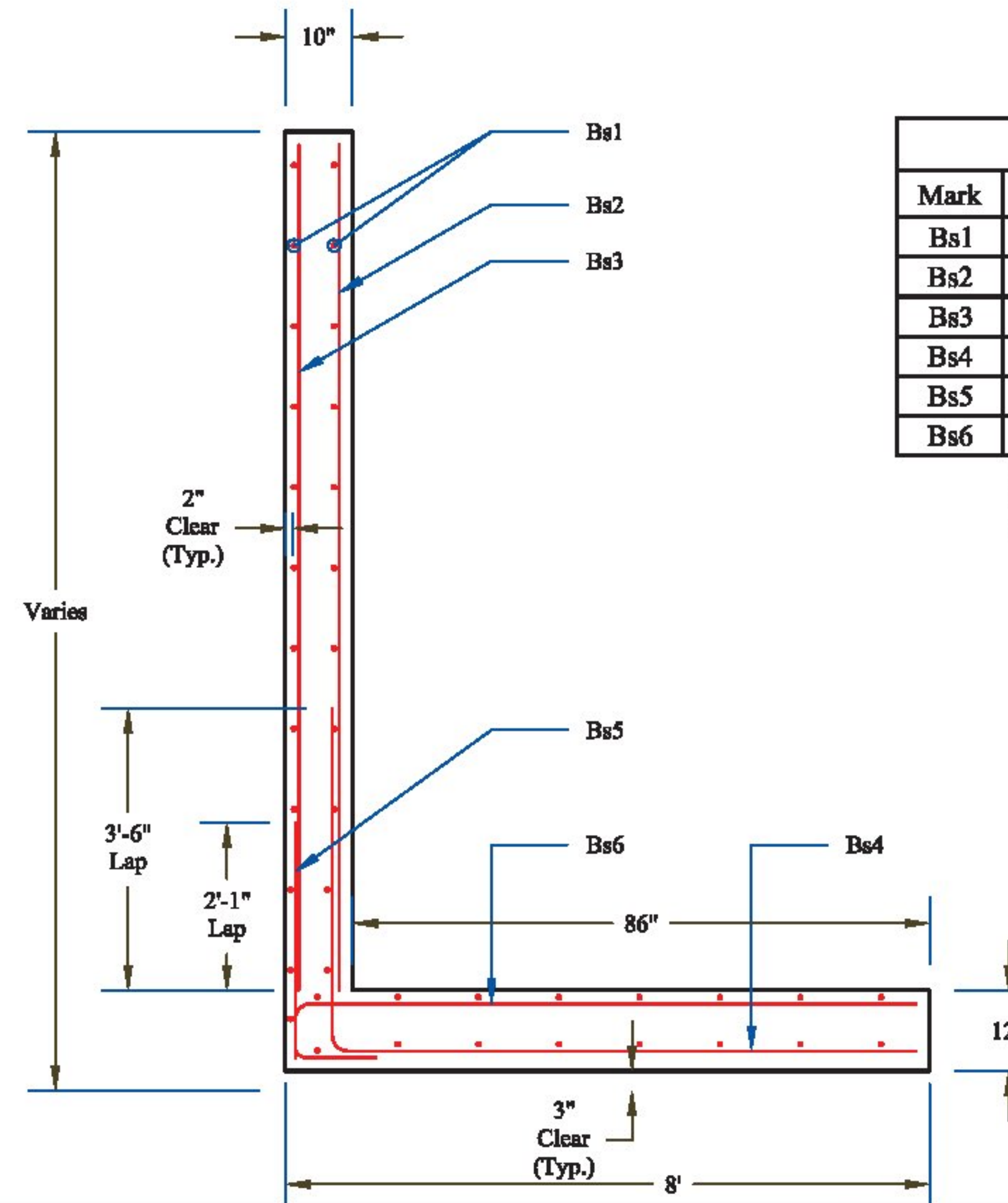
**HW-2 Detail (Outlet)**



**Headwall Isometric Detail**



**Wingwall Reinforcing Detail**

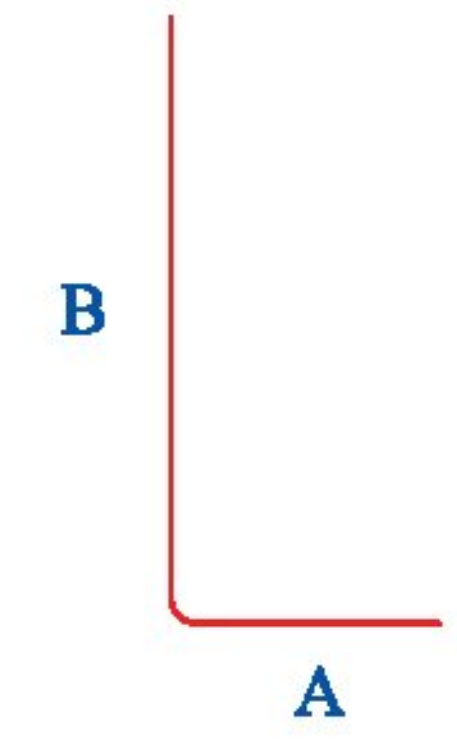


**Rebar Schedule**

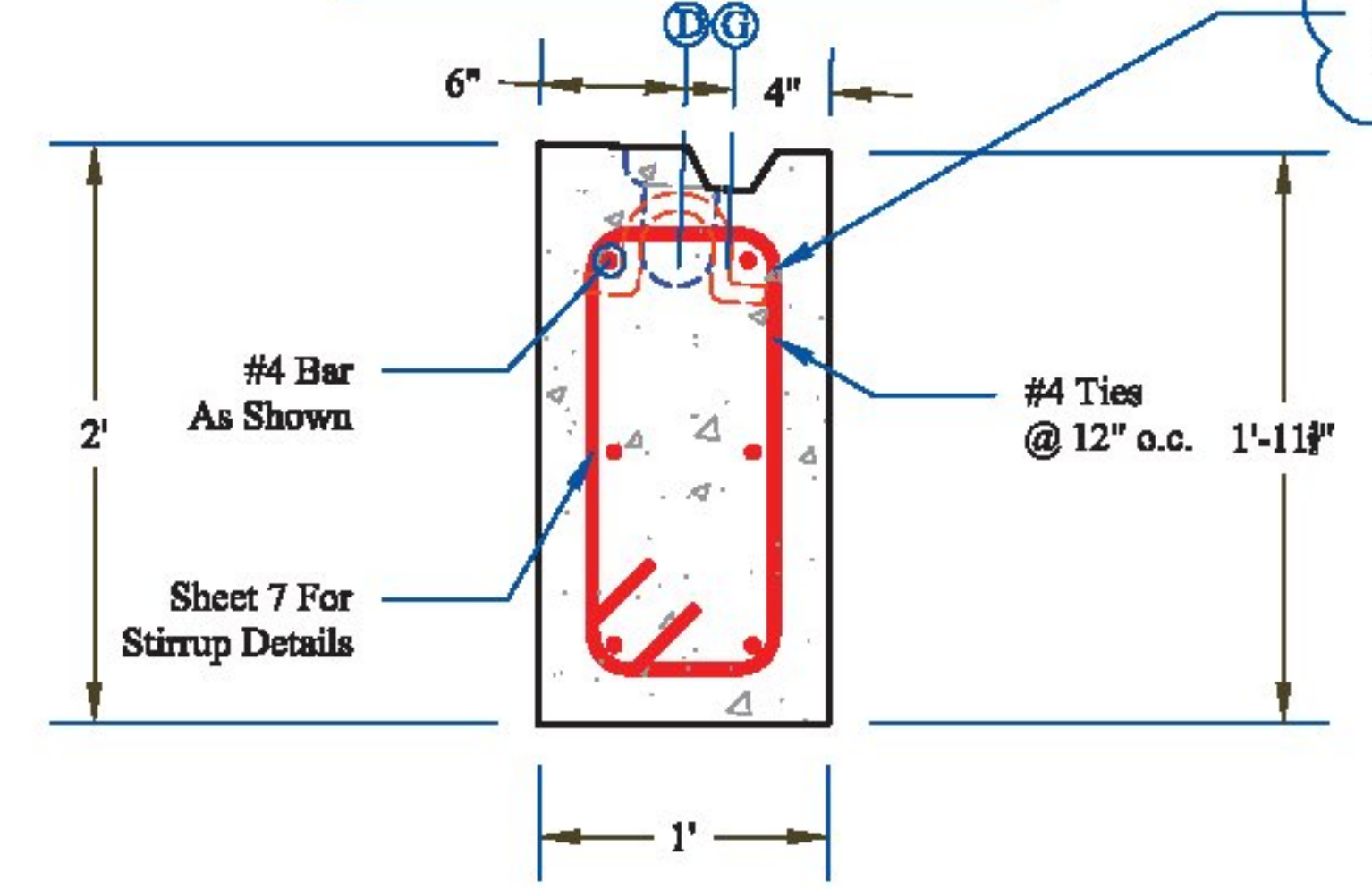
Mark	Size	Qty	Max Spacing	Length	Type	A	B
Bs1	#4	210	18"	Varies	Str	Varies	
Bs2	#6	84	8"	Varies	Str	Varies	
Bs3	#4	61	12"	Varies	Str	Varies	
Bs4	#6	84	8"	135"	Bent	86"	49"
Bs5	#4	61	12"	46"	Bent	12"	34"
Bs6	#6	84	8"	99"	Str	92"	7"

Note: 2" Clear Typical Unless Noted Otherwise  
 Note: Quantities in Addition to Consideration to Dudley's Email Dated 05/21/14, Items 1 - 9

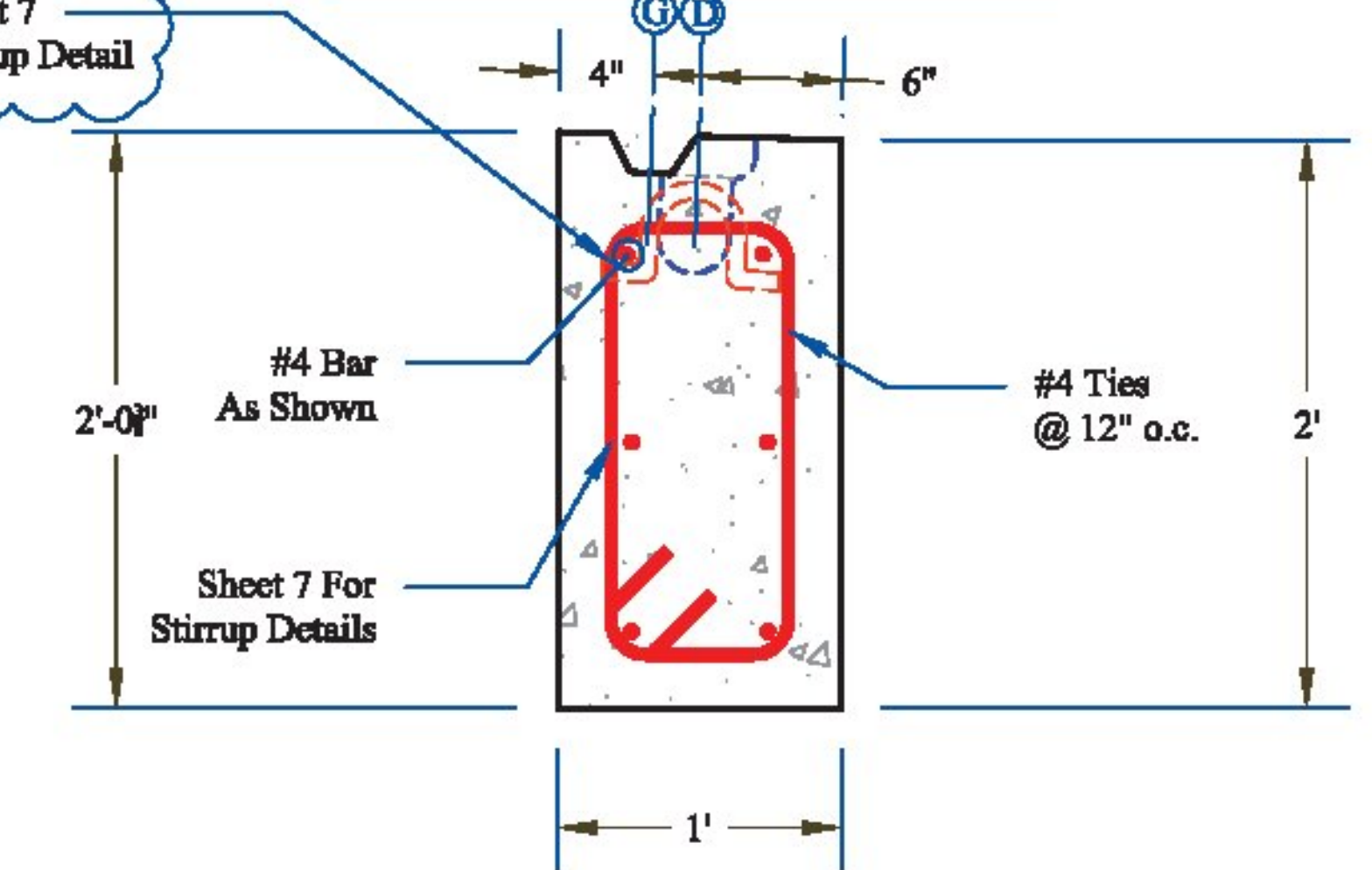
**Bent Bar Dimension Guide**



**CW-1 (Inlet) Section Detail**



**CW-2 (Outlet) Section Detail**



- CONTRACTORS VISIT:**
- (A) 2"Ø PVC Sleeve
  - (B) 4"Ø PVC Sleeve
  - (C) Mechanical Bolt Pocket (A.L. Patterson w/ 1"Ø Coil Rod)
  - (D) Oxford A750-7 Lifting Device
  - (E) 1"Øx12" CX-9 Coil Loop Insert
  - (F) Patterson Bolt Pocket Former
  - (G) 1 1/2" x 3 1/2" Continuous Keyway
  - (H) Solid Lines Indicate 3/4" Chamfer
  - (I) 1" FI 64 Ferrule Insert

**PRECAST CONCRETE BOX CULVERT SHOP DRAWINGS (SDI JOB #14213)**  
 SUPERVISOR: M. WHEELER  
 DETAILER: I. ADAMS  
 CHECKER: T. DUDLEY  
 ENGINEER:

**M&M Excavating**  
 PO Box 585  
 Chester, VT 05143  
 Ph: (802) 875-3319

**FABRICATOR:**  
 193 INDUSTRIAL AVE.  
 WILLISTON, VT 05495  
 Ph: (802) 658-0201



06/23/2014

CUTOFF/HEADWALLS

6\_OF\_7