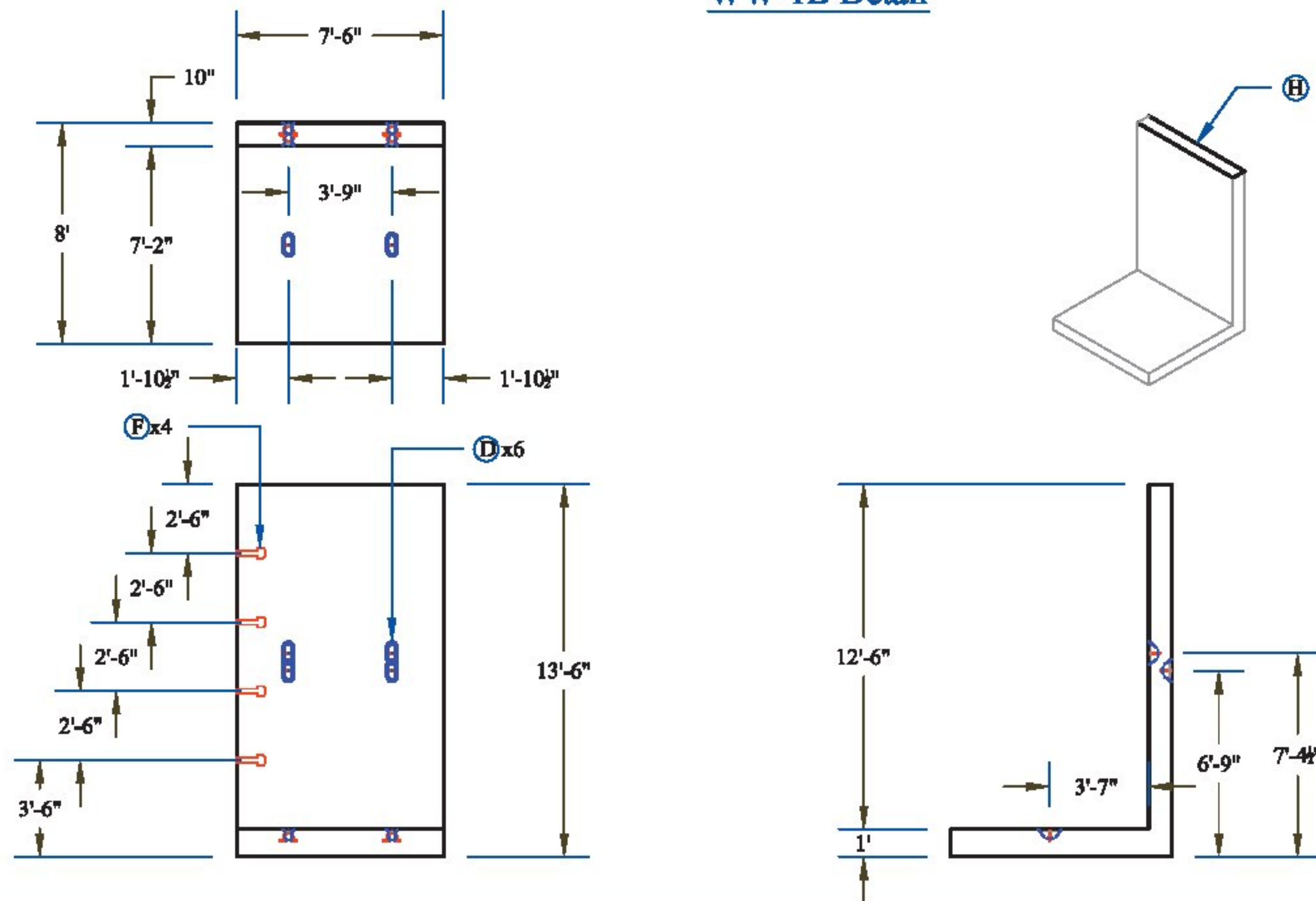
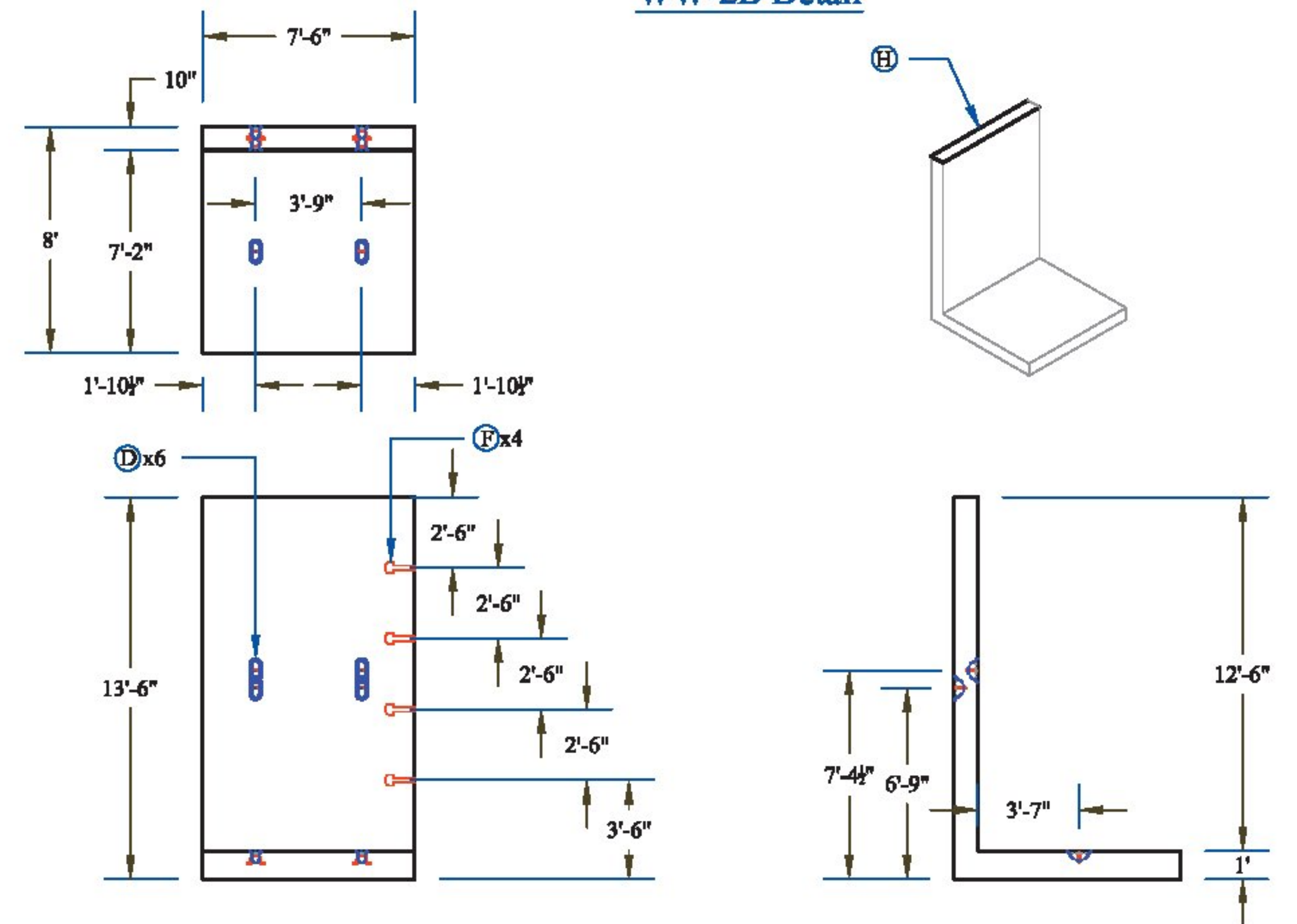


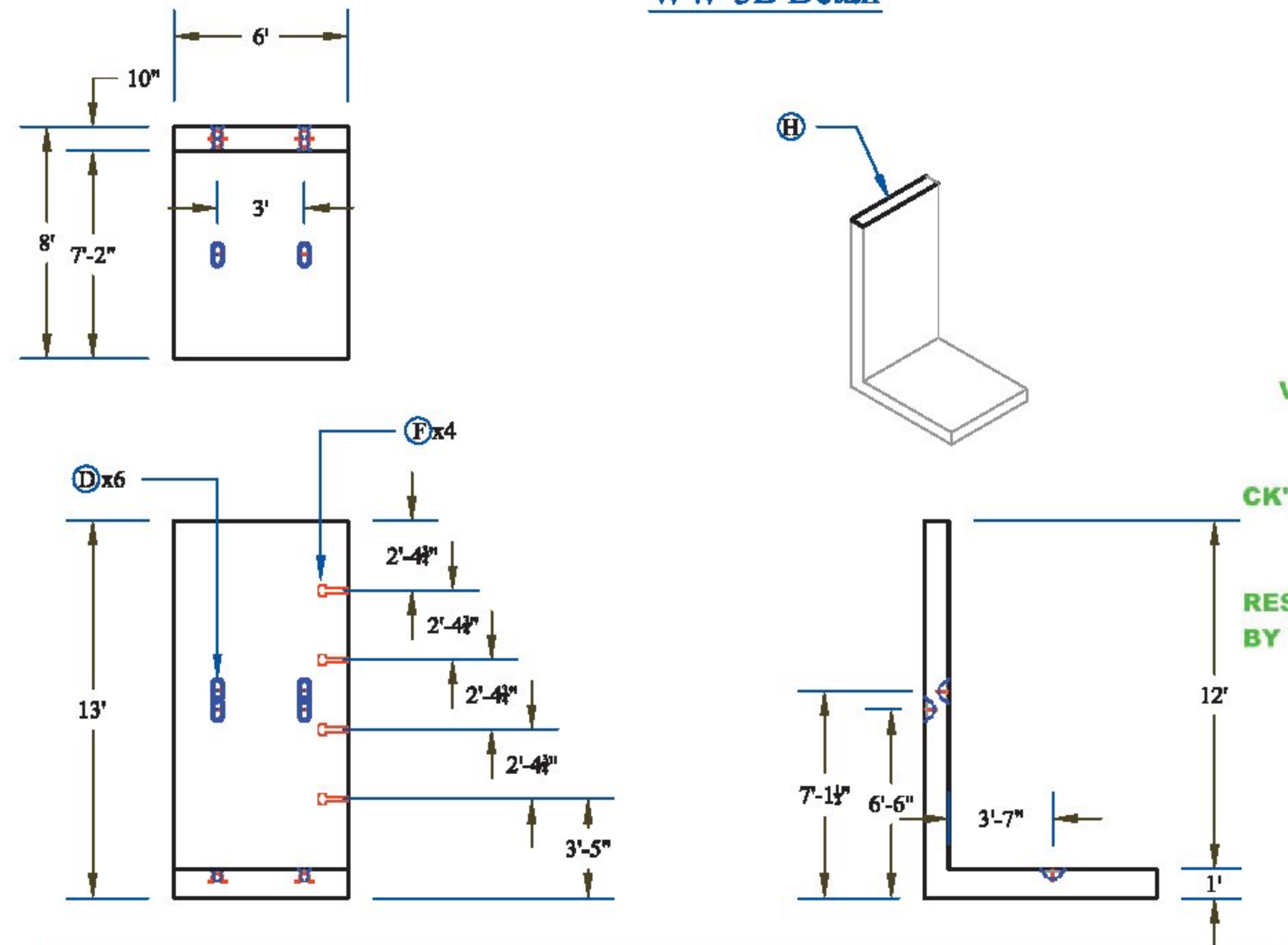
WW-1B Detail



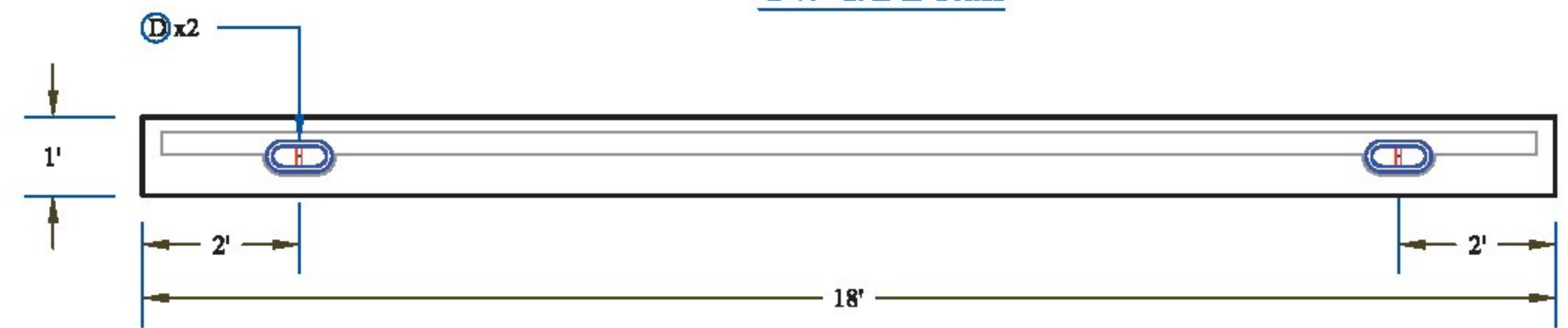
WW-2B Detail



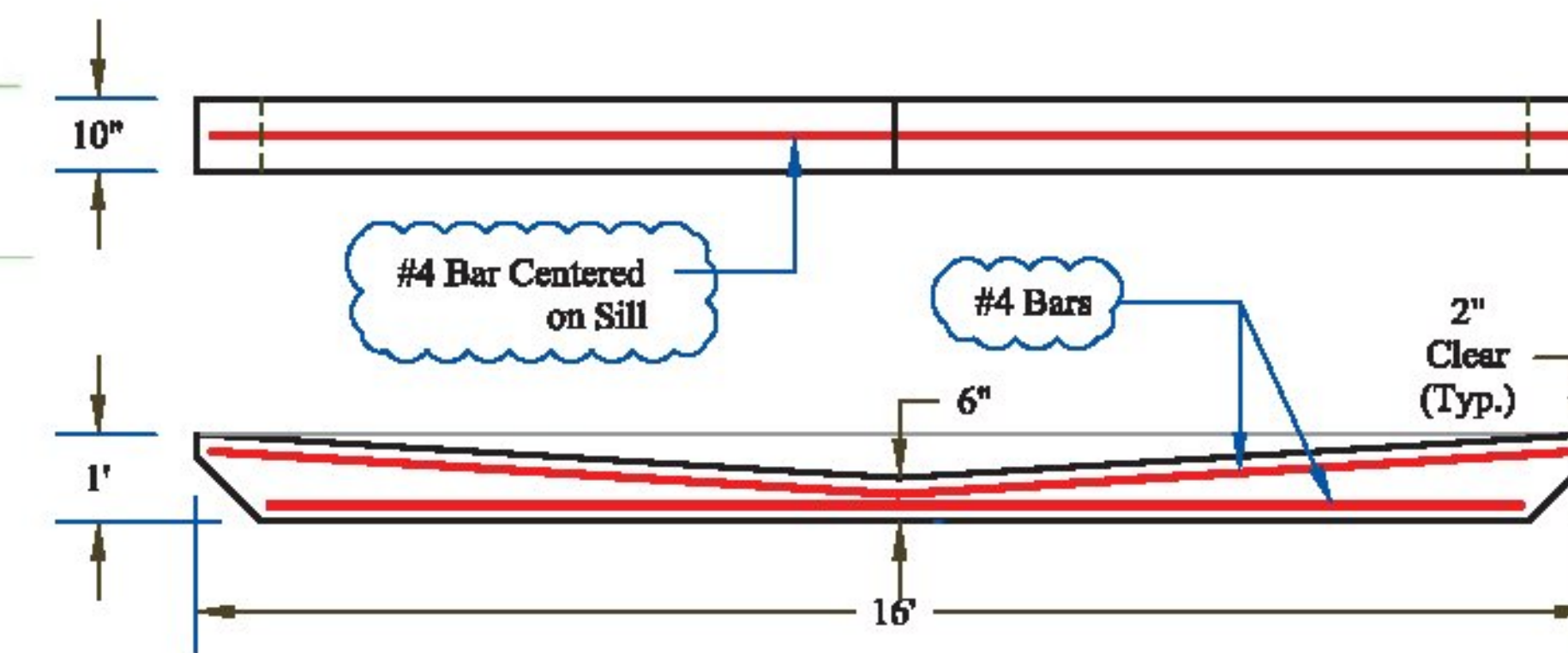
WW-3B Detail



CW-1/2 Detail

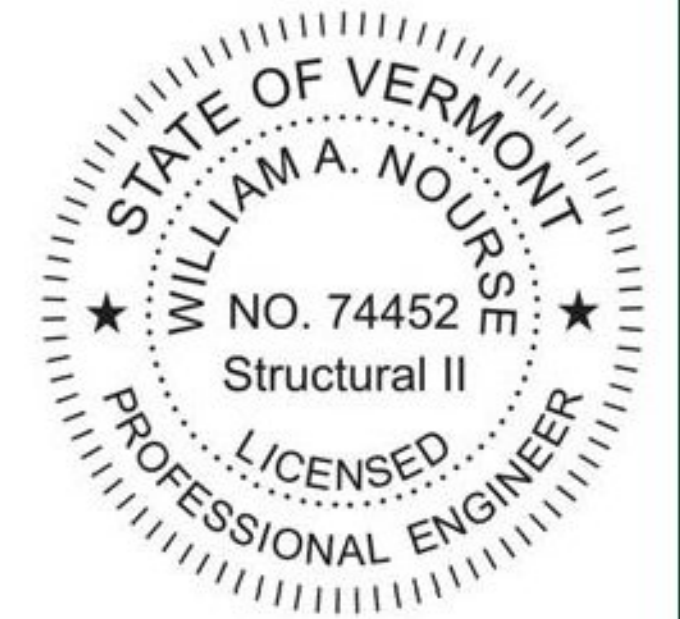


Retention Sill Detail



Vermont Agency of Transportation
RECEIVED

CK'D BY JW OK'D BY JS
June 24, 2014
RESUBMIT NO Approved
BY KH DATE 6-25-2014



- CONTRACTORS VISPE:**
- (A) 2"Ø PVC Sleeve
 - (B) 4"Ø PVC Sleeve
 - (C) Mechanical Bolt Pocket (A.L. Patterson w/ 1"Ø Coil Rod)
 - (D) Oxford A750-7 Lifting Device
 - (E) 1"Øx12" CX-9 Coil Loop Insert
 - (F) Patterson Bolt Pocket Former
 - (G) 1 1/2" x 3 1/2" Continuous Keyway
 - (H) Solid Lines Indicate 3/4" Chamfer
 - (I) 3/8" FI 64 Ferrule Insert

PRECAST CONCRETE BOX CULVERT SHOP DRAWINGS (SDI JOB #14213)
SUPERVISOR: M. WHEELER
DETAILER: I. ADAMS
CHECKER: T. DUDLEY
ENGINEER:

M&M Excavating
PO Box 585
Chester, VT 05143
Ph: (802) 875-3319

FABRICATOR:
193 INDUSTRIAL AVE.
WILLISTON, VT 05495
Ph: (802) 658-0201



06/23/2014

WINGWALLS

5_OF_7