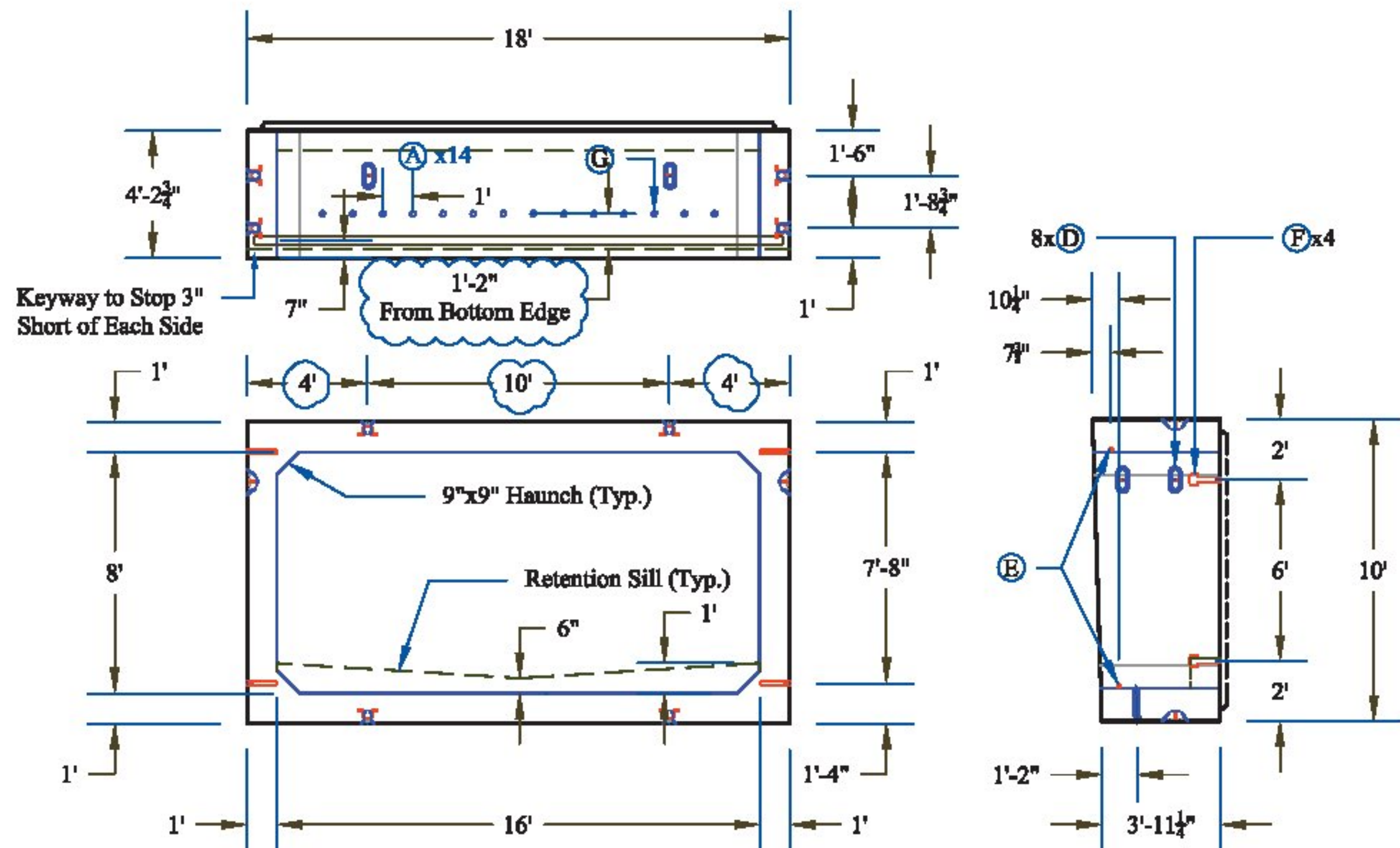
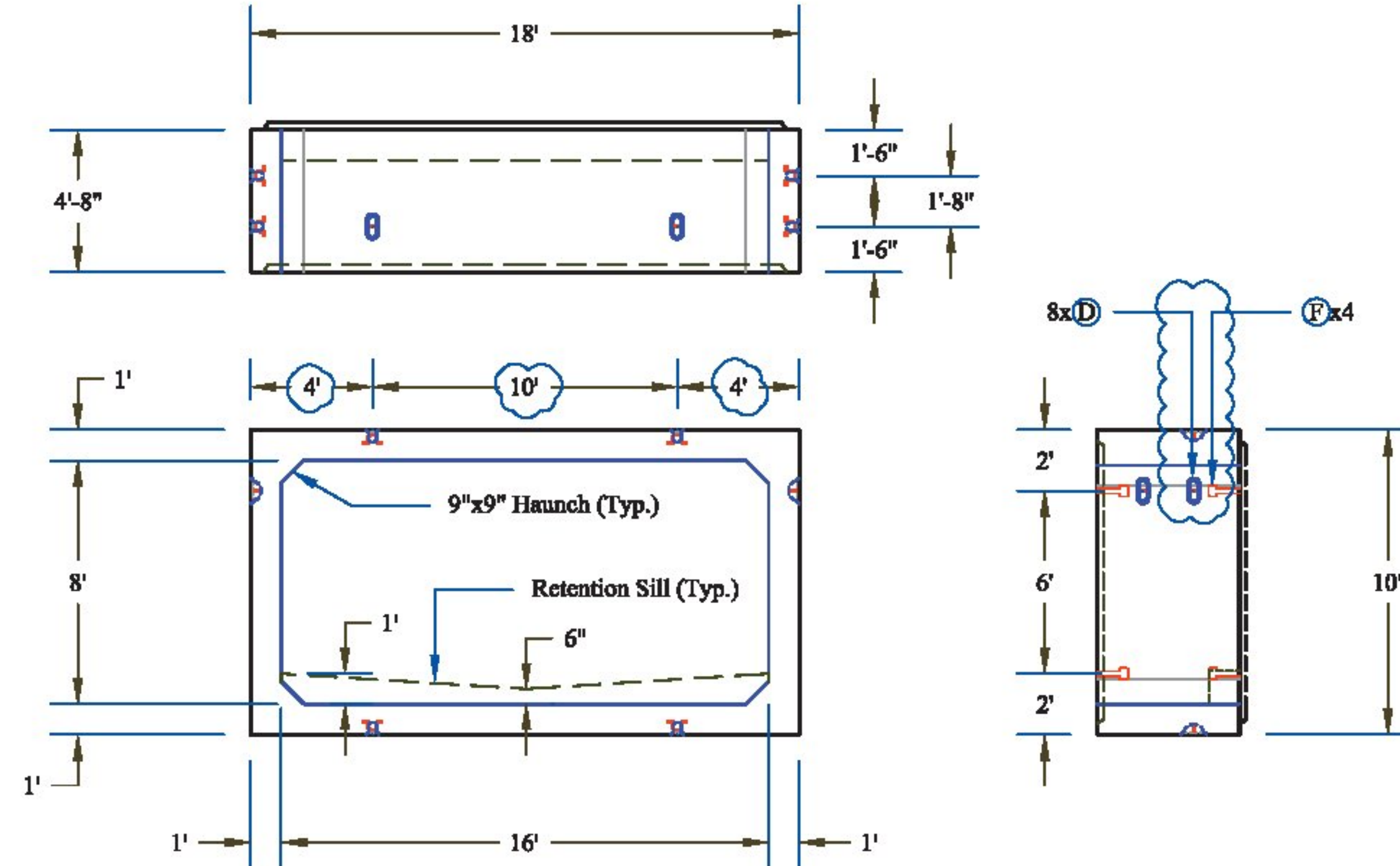


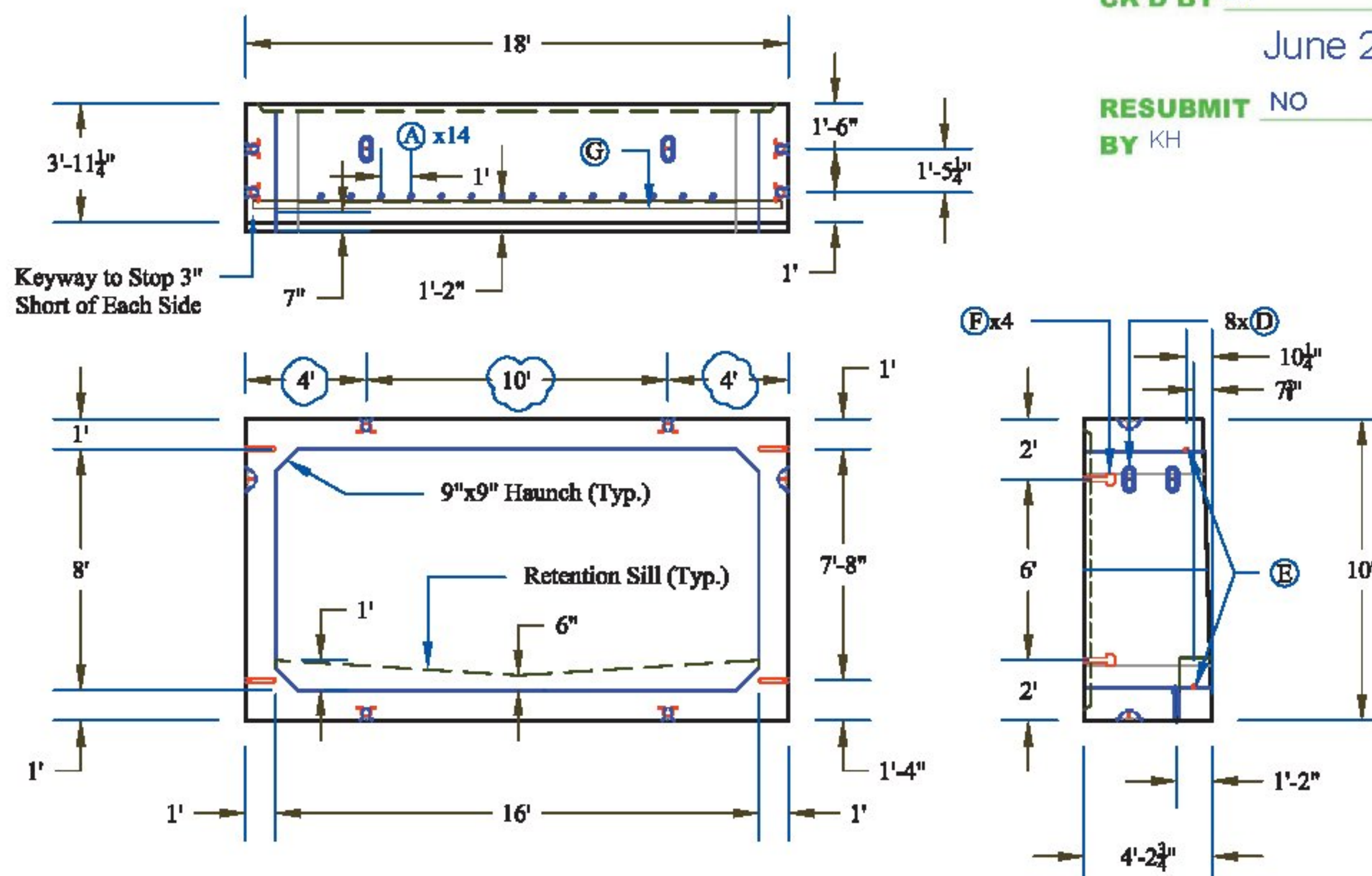
**BC-1 Detail**



**BC-2 Detail**



**BC-3 Detail**



Vermont Agency of Transportation

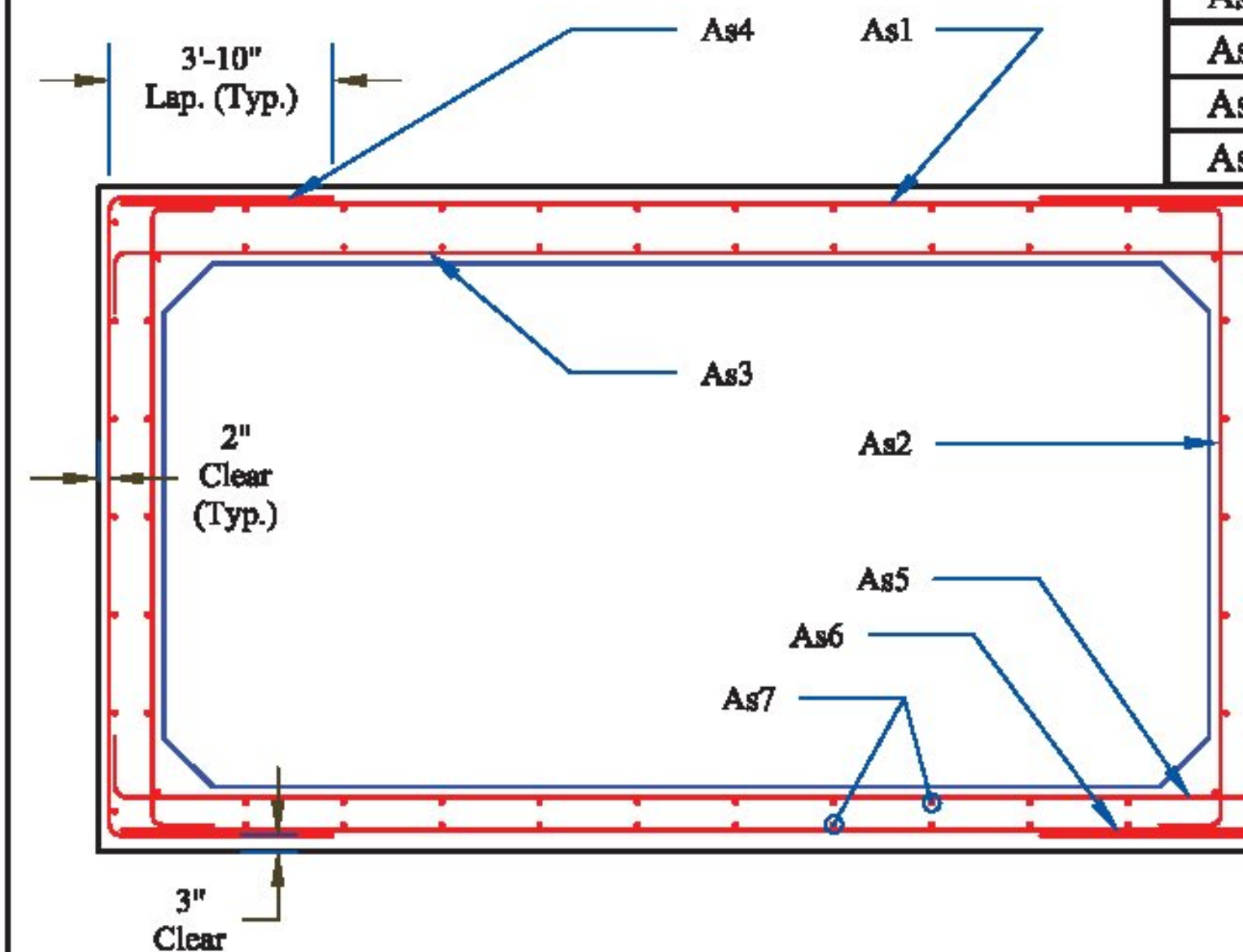
**RECEIVED**

CK'D BY JW OK'D BY JS

June 24, 2014

RESUBMIT NO Approved  
BY KH DATE 6-25-2014

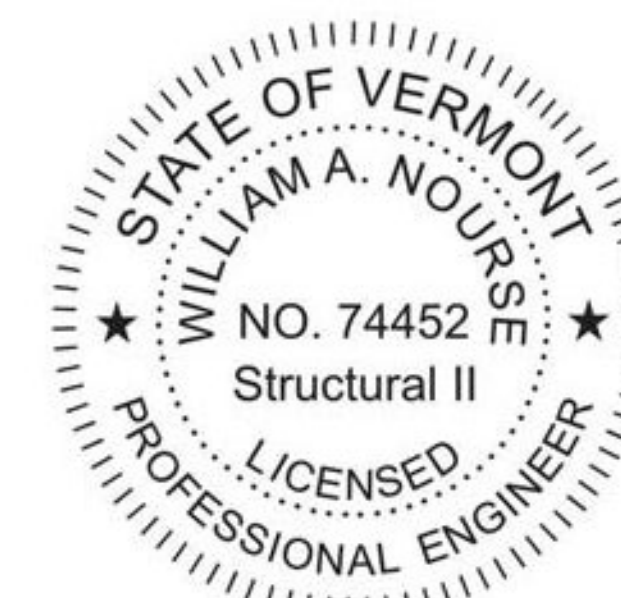
**Box Reinforcing Detail**



**Rebar Schedule**

Mark	Size	Qty.*	Max Spacing	Length	Type	A	B	C
As1	#4	39	18"	212"	Str	212"		
As2**	#4	39	18"	127"	Bent	6"	115"	6"
As3**	#6	127	6"	230"	Bent	9"	212"	9"
As4	#6	260	6"	207"	Bent	46"	115"	46"
As5	#6	101	8"	228"	Bent	8"	212"	8"
As6	#4	39	18"	212"	Str	212"		
As7	#4	572	18"	Varies	Str	Varies		

\*Quantities Apply for Box Culvert  
 \*\*Additional Bars as Per T. Dudley's Email  
 Dated 05/21/14, Item #5  
 Note: Quantities in Addition to Consideration to  
 Dudley's Email Dated 05/21/14, Items 1 - 9



- CONTRACTORS VISIT:**
- A 2" PVC Sleeve
  - B 4" PVC Sleeve
  - C Mechanical Bolt Pocket (A.L. Patterson w/ 1" Coil Rod)
  - D Oxford A750-7 Lifting Device
  - E 1" x 12" CX-9 Coil Loop Insert
  - F Patterson Bolt Pocket Former
  - G 1 1/2" x 3 1/2" Continuous Keyway
  - H Solid Lines Indicate 3/4" Chamfer
  - I 1" FI 64 Ferrule Insert

PRECAST CONCRETE BOX CULVERT SHOP DRAWINGS (SDI JOB #14213)  
 SUPERVISOR: M. WHEELER  
 DETAILER: I. ADAMS  
 CHECKER: T. DUDLEY  
 ENGINEER:

M&M Excavating  
 PO Box 585  
 Chester, VT 05143  
 Ph: (802) 875-3319

FABRICATOR:  
 193 INDUSTRIAL AVE.  
 WILLISTON, VT 05495  
 Ph: (802) 658-0201



06/23/2014

BOX\_SECTIONS

3\_OF\_7