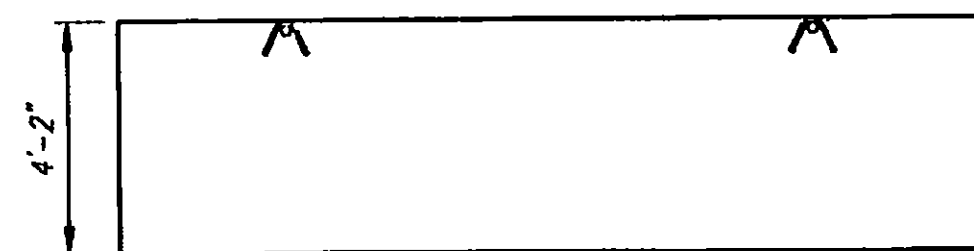


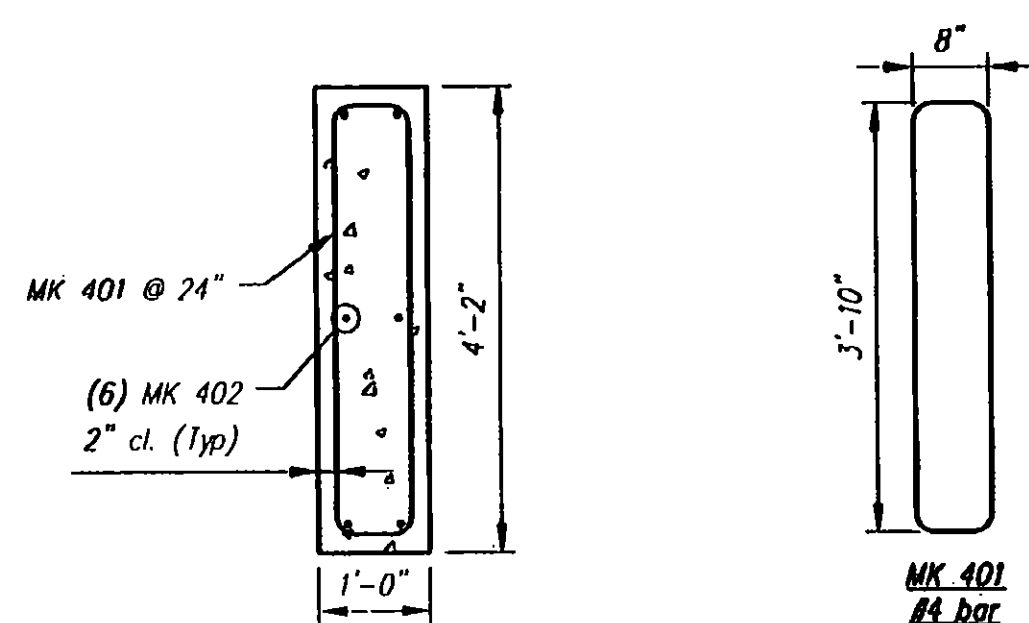
PLAN

CW1 - BILL OF MATERIALS / EMBEDS				
CSI ID#	DESCRIPTION	QTY	UM	COMMENTS
EM-00115	UTILITY ANCHOR #8UA671-GALVANIZED	2	EA	
RM-00013	REBAR #4 BLACK- GR 60	120	LB	
MX-FA4000SC15	MIX DSGN 15% FLY ASH 4000 SELF COMPACT	2.37	CY	



ELEVATION

Rebar Schedule		
MK	QTY	LENGTH
401 #4	9	10' 0"
402 #4	6	15' 0"



REINFORCING DETAIL

Vermont Agency of Transportation  
**RECEIVED**  
 CK'D BY JLG OK'D BY WDL  
 August 21, 2012  
 RESUBMIT \_\_\_\_\_ APPROVED X  
 BY KMH DATE 8-21-12

PROJECT NO: STP 034-3 (21)  
 PROJECT NAME: BRIGHTON

MORRILL CONSTRUCTION  
 ROUTE NO. VT 105 - BRIDGE NO. 88  
 BRIGHTON, VT

**CSI**  
 Concrete Systems Inc.  
 9 Commercial St., Hudson, NH, 03051  
 Phone 603-889-4163  
 Fax 603-889-2417

Drawn By: A KOSTENKO  
 Date: 08/20/2012  
 Concrete Cu. Yd.: 2.37  
 Weight in Tons: 4.80  
 Approved by: [Signature]  
 Date: [Blank]

Quantity: 1 Project No: STP 034-3 (21) SHEET 6 OF 10

Rev.	Date	DESCRIPTION	By
5			
4			
3			
2			
1			
REVISIONS			

STATE AGENCY  
 VTrans  
 PROJECT NO: STP 034-3 (21)  
 DRAWING NO: C21314-CW1  
 SHEET 6 OF 10