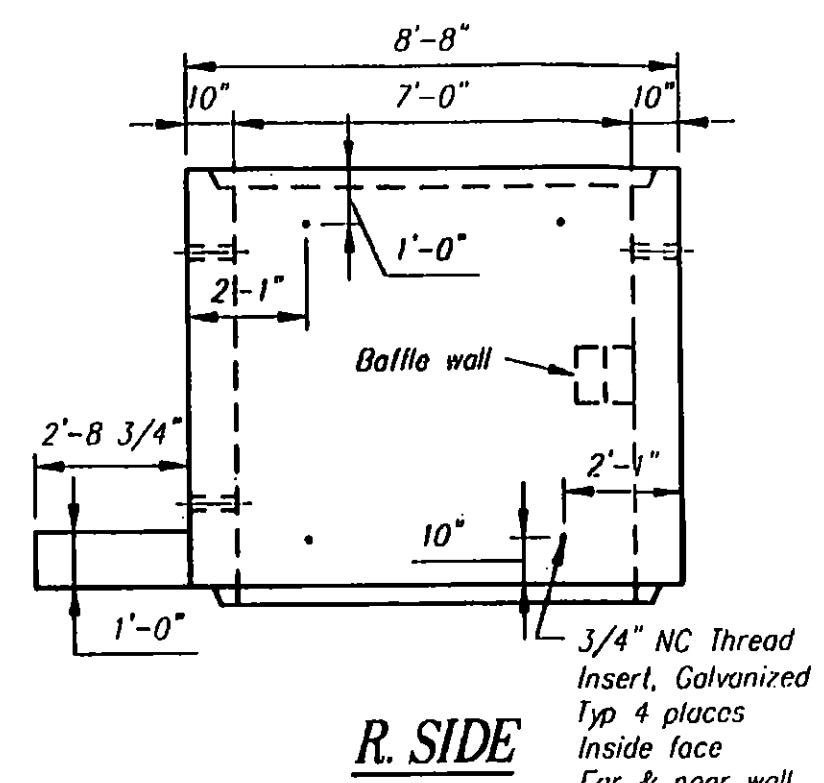


PLAN

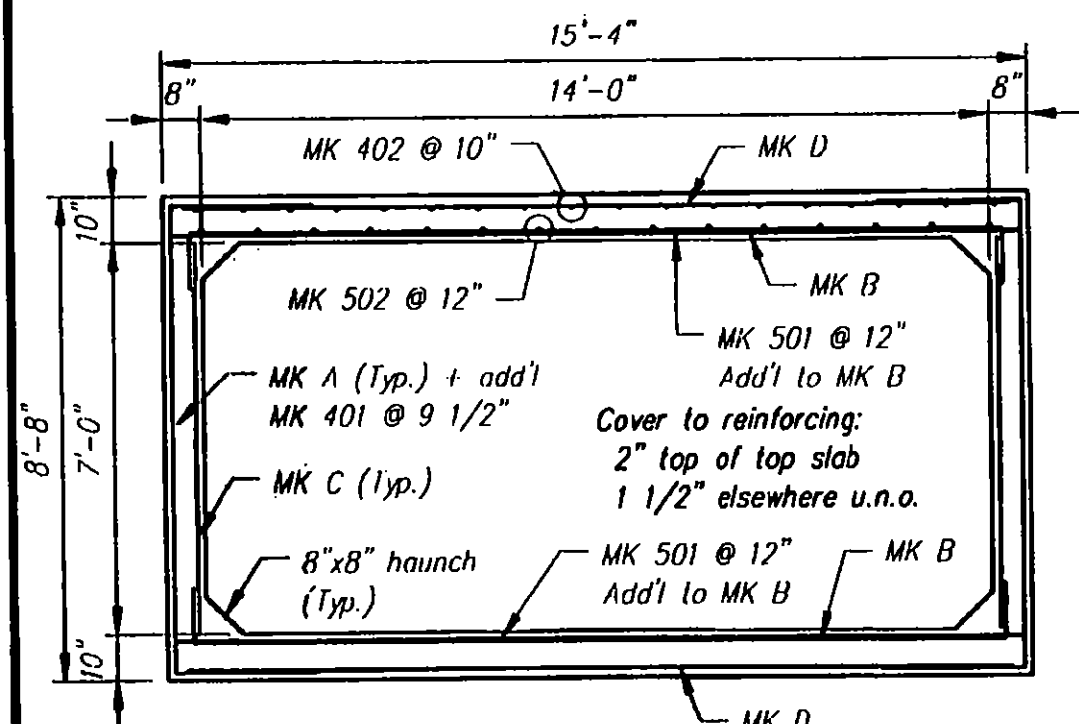


R. SIDE

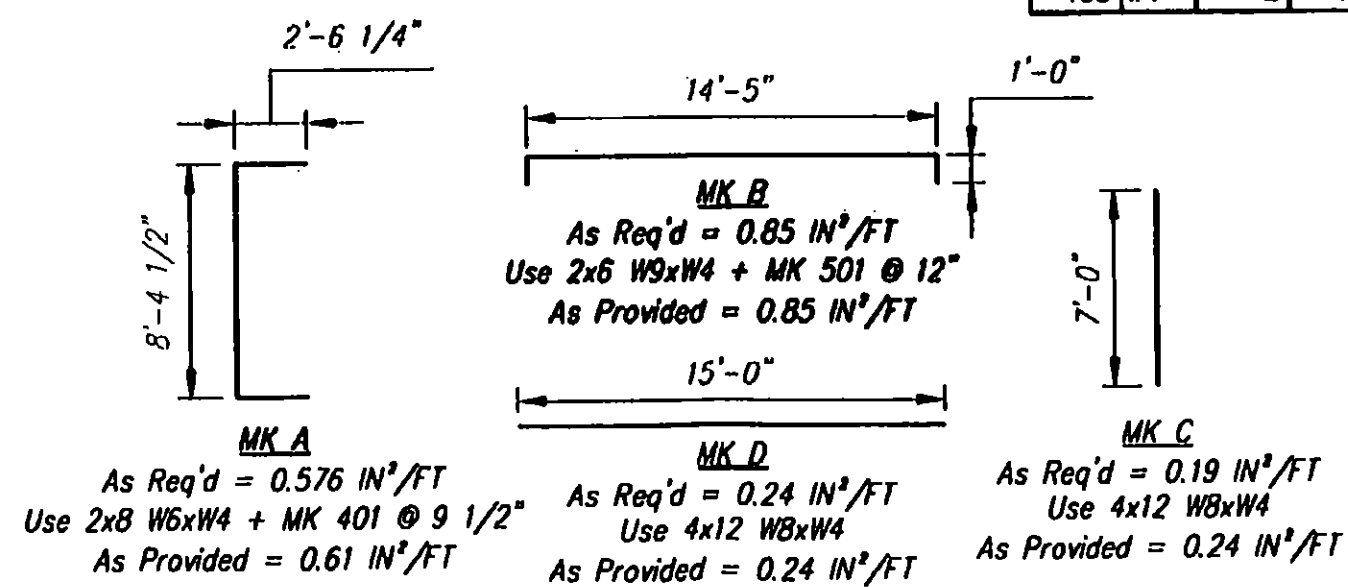
Vermont Agency of Transportation

RECEIVED

CK'D BY JLG OK'D BY WDL
 August 21, 2012
 RESUBMIT APPROVED X
 BY KMH DATE 8-21-12



REINFORCING DETAIL



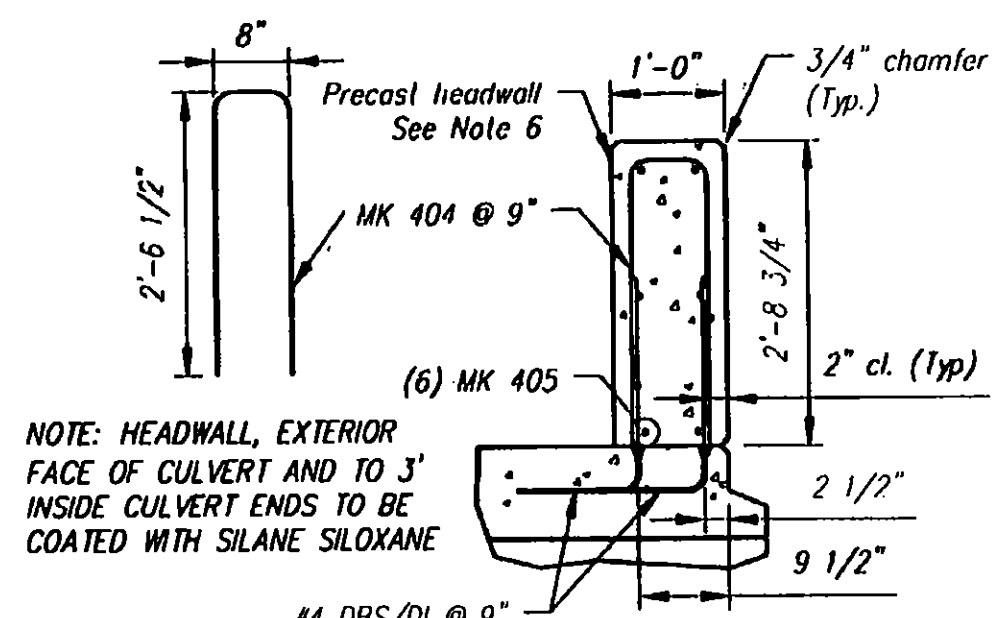
BENDING SCHEDULE

C3 CULVERT - BILL OF MATERIALS / EMBEDS			
CSI ID#	DESCRIPTION	QTY	UM COMMENTS
EM-00010	DBSAE #4 X 18" BLACK	47	EA DOWEL BAR SPICER
EM-00033	3" FOAM CORE PVC	5	FT
EM-00112	3/4 X 4" GALV LF INSERT	8	EA
JS-00002	RUBATEX R421-N 1"X1" CLOSED NEOP GASKET	48	FT AROUND BELL
RM-00013	REBAR #4 BLACK-GR 60	268	LB
RM-00018	REBAR #5 BLACK-GR 60 40'	384	LB
RM-00098	WIRE MESH ALL SIZES	1183	LB TOTAL WEIGHT
MX-FA5000SC20	MIX DSGN 20% FLY ASH 5000 SELF COMPACT	6.84	CY
C3 HEADWALL - BILL OF MATERIALS / EMBEDS			
CT-00005	CONSOLIDECK SALTGUARD (SILANE SILOXANE)	1.2	GA
EM-00018	DI #4 X 18" PLAIN	40	EA DOWEL IN
RM-00013	REBAR #4 BLACK-GR 60	137	LB
MX-FA5000SC20	MIX DSGN 20% FLY ASH 5000 SELF COMPACT	1.55	CY
C3 BAFFLE - BILL OF MATERIALS / EMBEDS			
EM-00018	DI #4 X 18" PLAIN	7	EA DOWEL IN
RM-00013	REBAR #4 BLACK-GR 60	18	LB
MX-FA5000SC20	MIX DSGN 20% FLY ASH 5000 SELF COMPACT	0.38	CY

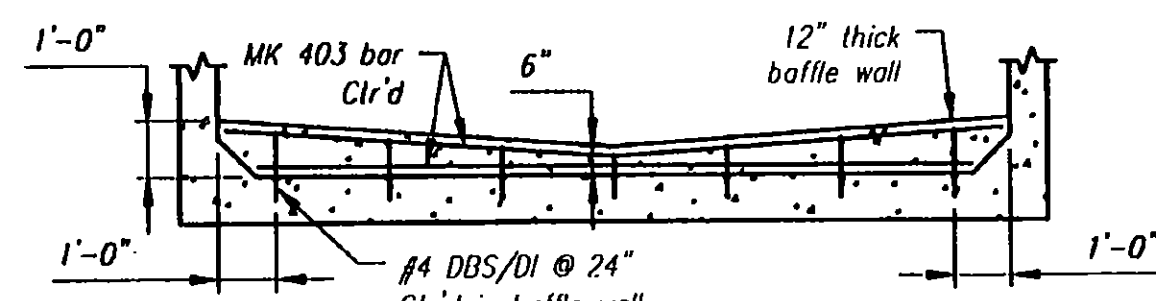
Culvert Rebar Schedule		
MK	QTY	LENGTH
401 #4	20	13' - 5"
402 #4	18	6' - 11"
501 #5	16	15' - 0"
502 #5	15	7' - 3"

Headwall Rebar Schedule		
MK	QTY	LENGTH
404 #4	20	5' - 9"
405 #4	6	15' - 0"

Baffle Rebar Schedule		
MK	QTY	LENGTH
403 #4	2	13' - 9"



SECTION A



BAFFLE WALL SECTION

PROJECT NO: STP 034-3 (21)
 PROJECT NAME: BRIGHTON

MORRILL CONSTRUCTION
 ROUTE NO. VT 105 - BRIDGE NO. 88
 BRIGHTON, VT

Rev.	Date	DESCRIPTION	By
5			
4			
3			
2			
1			

CSI
 Concrete Systems Inc.
 9 Commercial St., Hudson, NH, 03051
 Phone 603-889-4163
 Fax 603-889-2417

Drawn By: A. KOSTENKO
 Date: 08/20/2012
 Concrete Cu. Yd.: 11.69
 Weight in Tons: 23.67
 Approved by: [Signature]

STATE AGENCY: VTrans
 Drawing No.: C21314-C3
 Quantity: 1
 Project No: STP 034-3 (21)
 SHEET 3 OF 10