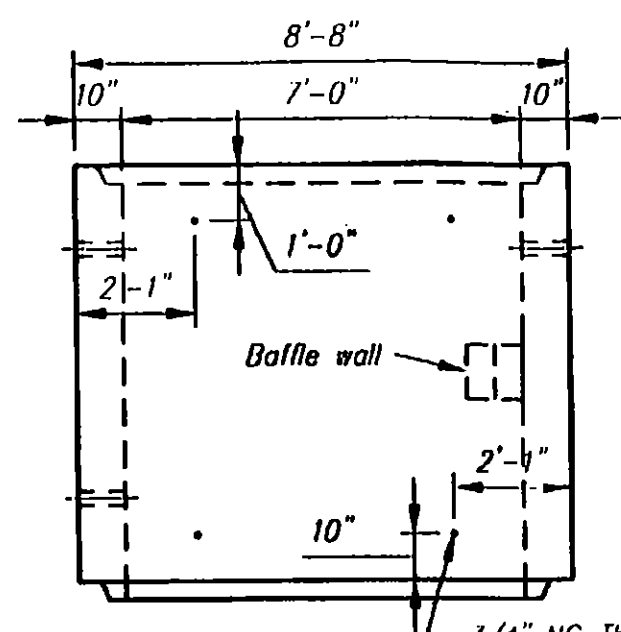


PLAN



R. SIDE

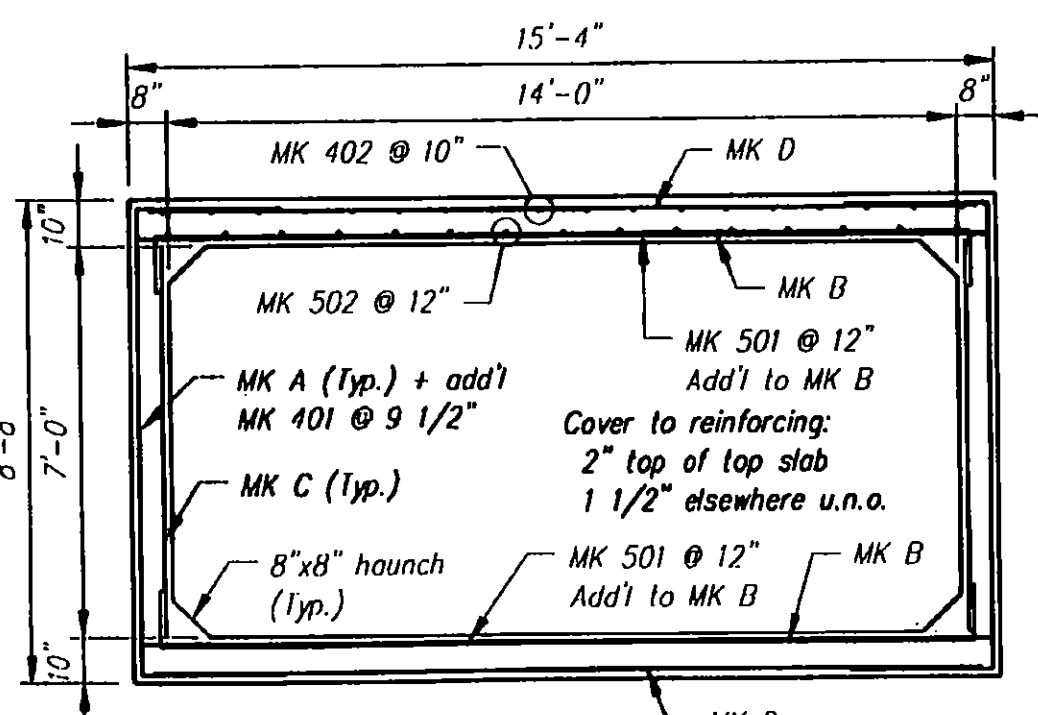
| C2 CULVERT - BILL OF MATERIALS / EMBEDS | | | |
|---|---|------|----------------------|
| CSI ID# | DESCRIPTION | QTY | UM COMMENTS |
| EM-00010 | DBSAE #4 X 18" BLACK | 7 | EA DOWEL BAR SPLICER |
| EM-00033 | 3" FOAM CORE PVC | 5 | FT |
| EM-00112 | 3/4 X 4" GALV LF INSERT | 8 | EA |
| JS-00002 | RUBATEX R421-N 1"X1" CLOSED NEOP GASKET | 48 | FT AROUND BELL |
| RM-00013 | REBAR #4 BLACK-GR 60 | 268 | LB |
| RM-00015 | REBAR #5 BLACK-GR 60 40' | 364 | LB |
| RM-00098 | WIRE MESH ALL SIZES | 1153 | LB TOTAL WEIGHT |
| MX-FA5000SC20 | MIX DSGN 20% FLY ASH 5000 SELF COMPACT | 9.94 | CY |

| C2 BAFFLE - BILL OF MATERIALS / EMBEDS | | | |
|--|--|------|-------------|
| CSI ID# | DESCRIPTION | QTY | UM COMMENTS |
| EM-00018 | D1 #4 X 18" PLAIN | 7 | EA DOWEL IN |
| RM-00013 | REBAR #4 BLACK-GR 60 | 18 | LB |
| MX-FA5000SC20 | MIX DSGN 20% FLY ASH 5000 SELF COMPACT | 0.38 | CY |

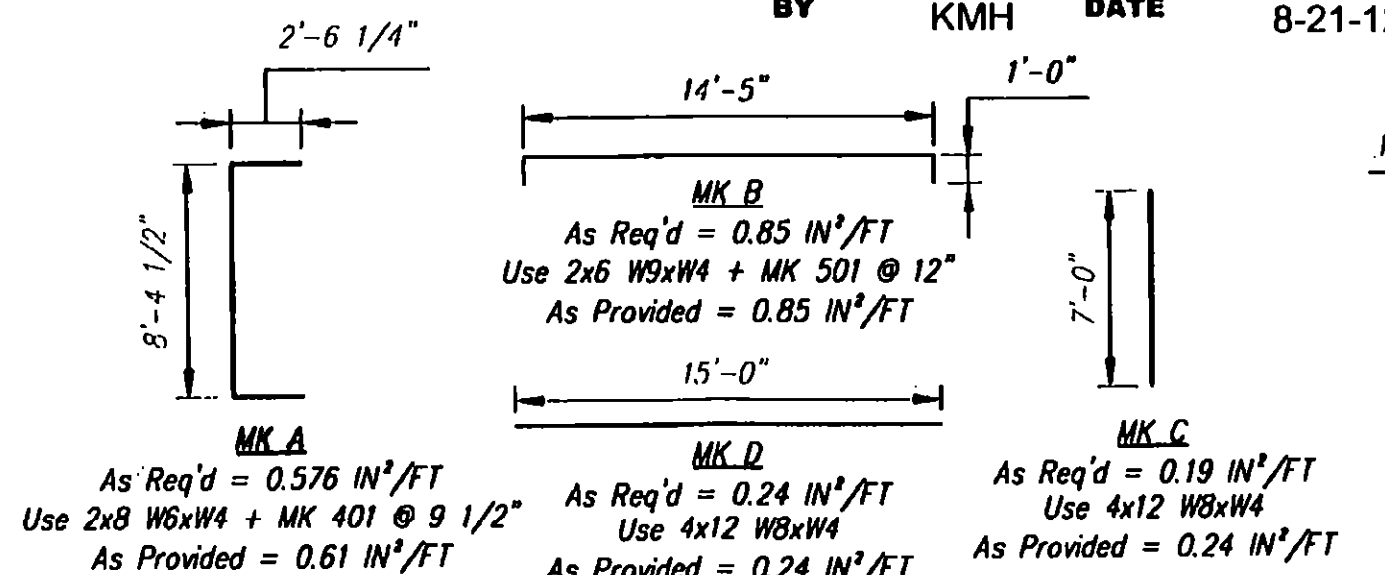
| Culvert Rebar Schedule | | |
|------------------------|-----|----------|
| MK | QTY | LENGTH |
| 401 #4 | 20 | 13' - 5" |
| 402 #4 | 18 | 7' - 3" |
| 501 #5 | 16 | 15' - 0" |
| 502 #5 | 15 | 7' - 3" |

| Baffle Rebar Schedule | | |
|-----------------------|-----|----------|
| MK | QTY | LENGTH |
| 403 #4 | 2 | 13' - 9" |

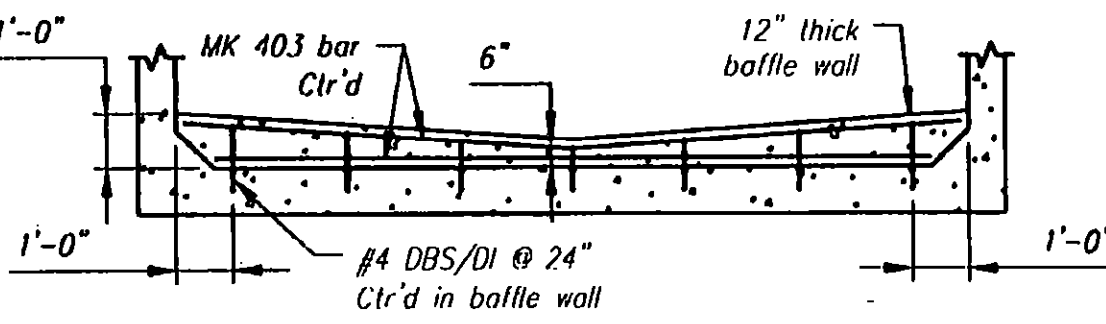
Vermont Agency of Transportation
RECEIVED
 CK'D BY JLG OK'D BY WDL
 August 21, 2012
 RESUBMIT APPROVED X
 BY KMH DATE 8-21-12



REINFORCING DETAIL



BENDING SCHEDULE



BAFFLE WALL SECTION

| Rev. | Date | DESCRIPTION | By |
|------|------|-------------|----|
| 5 | | | |
| 4 | | | |
| 3 | | | |
| 2 | | | |
| 1 | | | |

Concrete Systems Inc.
 9 Commercial St., Hudson, NH, 03051
 Phone 603-889-4163
 Fax 603-889-2417

STATE AGENCY
 VT Trans

Drawn by A. KOSTENKO
 Date 08/20/2012
 Concrete Cu. Yd. 10.32
 Weight in Tons 20.89

PROJECT NO: STP 034-3 (21)
 PROJECT NAME: BRIGHTON
 MORRILL CONSTRUCTION
 ROUTE NO. VT 105 - BRIDGE NO. 88
 BRIGHTON, VT

SHOP DRAWING C2
 Drawing No. C21314-C2

Quantity: 4 Project No: STP 034-3 (21) SHEET 2 OF 10