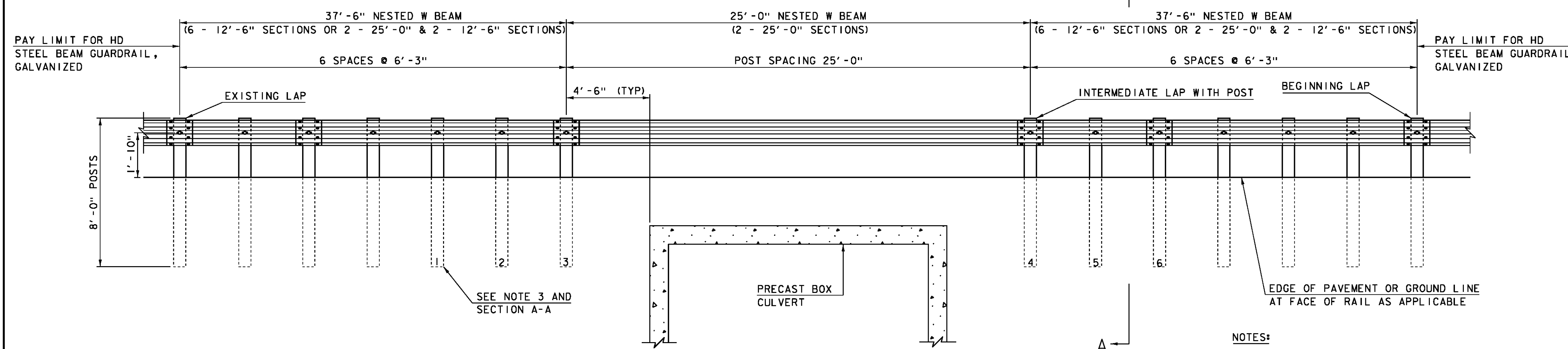
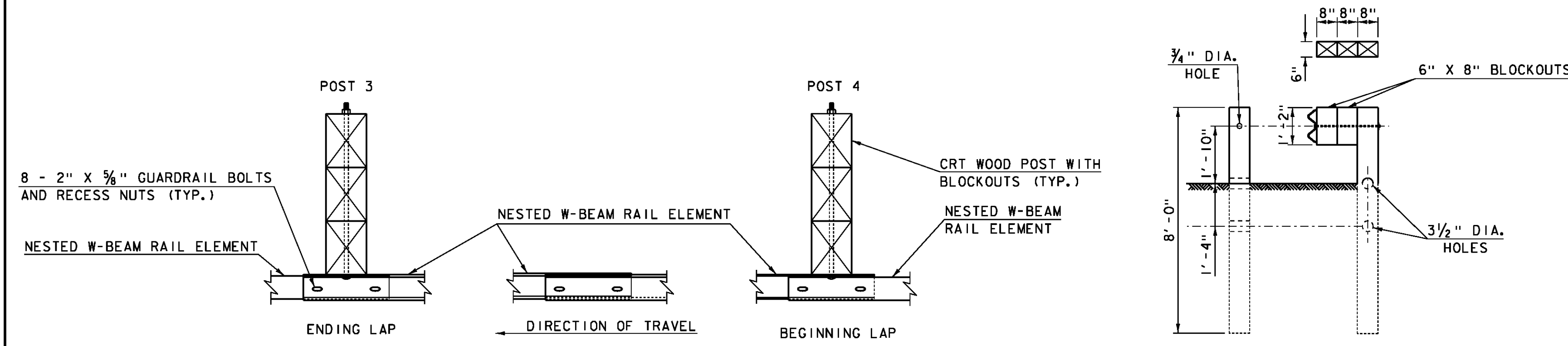


NESTED RAILING PLAN VIEW
(NOT TO SCALE)



NESTED RAILING ELEVATION VIEW
(NOT TO SCALE)



SECTION A-A
(POSTS 1 THRU 6)
(SEE NOTES 3 & 4)

- NOTES:
1. RAIL MEETS TEST LEVEL 3 REQUIREMENTS OF NCHRP REPORT 350.
 2. 25'-0" RAIL LENGTH WILL BE USED TO ELIMINATE THE INTERMEDIATE LAP WITHOUT A POST.
 3. POSTS 1 THRU 6 ARE BREAKAWAY CONTROLLED RELEASING TERMINAL (CRT) POSTS, SEE SECTION A-A FOR DETAILS.
 4. POSTS 1 THRU 6 HAVE TWO, 6" X 8" BLOCKOUTS. SEE SECTION A-A FOR DETAILS.
 5. ON POSTS 1 THRU 6, GUARDRAIL BOLT "D", AS SHOWN ON STD G1, SHALL BE 26" LONG.
 6. ON ALL POSTS WHERE THE RAIL IS DOUBLE-NESTED GUARDRAIL BOLT "A", AS SHOWN ON STD G1, SHALL BE 2" LONG.
 7. ALL POSTS WHERE THE RAIL IS DOUBLE-NESTED SHALL BE 8 FEET LONG TO PROVIDE FOR A 2'-8" SLOPE BREAKLINE.
 8. SEE STD G1 FOR ADDITIONAL GUARDRAIL DETAILS.

INTERMEDIATE LAP WITHOUT POST
(NOT TO SCALE)

PROJECT NAME: BRIGHTON	PLOT DATE: 12-JUN-2012
PROJECT NUMBER: STP 034-3(21)	DRAWN BY: J. SALVATORI
FILE NAME: s00b246rail.dgn	CHECKED BY: W. LAMMER
PROJECT LEADER: K. HIGGINS	SHEET 14 OF 30
DESIGNED BY: J. SALVATORI	
NESTED HDSB GUARDRAIL DETAILS	