

GPS CONTROL POINTS

HVCTRL #1

ISLE AZ MK 2000
 NORTH = 845551.229
 EAST = 182332.465
 ELEV. = 1182.940

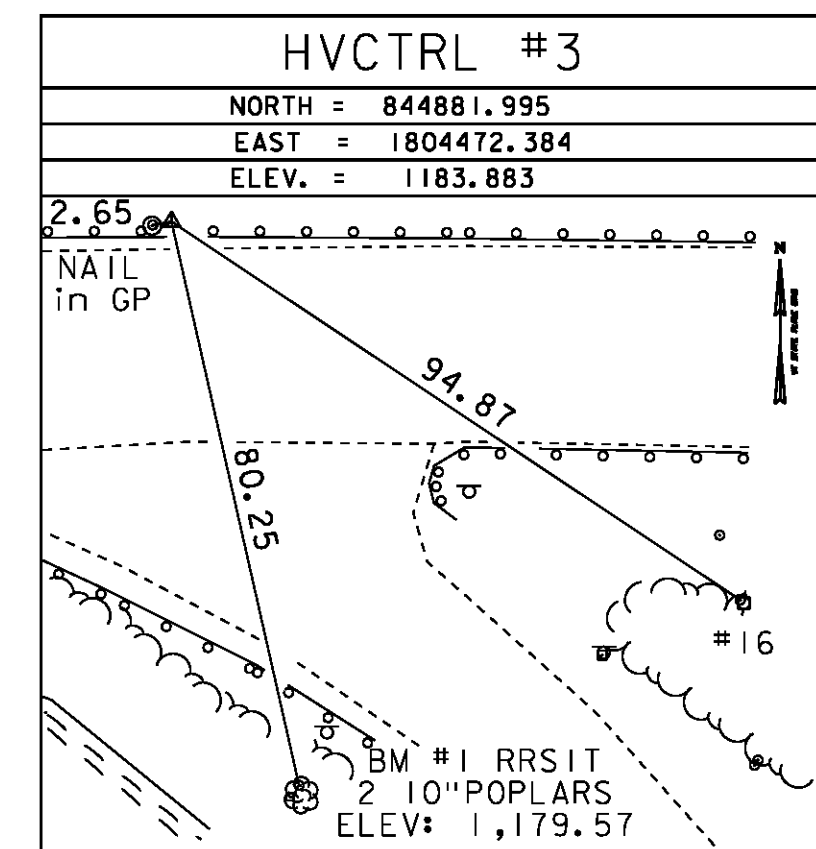
GENERAL LOCATION - ISLAND POND, VT
 TO REACH FROM THE INTERSECTION OF VT ROUTES 114 AND 105 IN ISLAND POND GO EAST ALONG VT ROUTE 105 FOR 0.3 MI (0.5 KM) TO THE MARK ON THE LEFT. THE MARK IS LOCATED 2.0 M (6.6 FT) NORTHEAST OF AND ABOUT 0.3 M (1.0 FT) LOWER THAN THE NORTHEAST EDGE OF PAVEMENT OF ROUTE 105, 5.4 M (17.7 FT) SOUTHEAST OF POLE NUMBER 85, 17.2 M (56.4 FT) NORTH NORTHEAST OF POLE NUMBER 8, AND 2.0 M (6.6 FT) SOUTHWEST OF A FIBERGLASS WITNESS POST.

HVCTRL #2

ISLE 2000
 NORTH = 844839.754
 EAST = 183869.506
 ELEV. = 1179.460

GENERAL LOCATION - ISLAND POND, VT
 TO REACH FROM THE INTERSECTION OF VT ROUTES 114 AND 105 IN ISLAND POND GO EAST ALONG VT ROUTE 105 FOR 0.6 MI (1.0 KM) TO THE MARK ON THE RIGHT. THE MARK IS LOCATED 2.0 M (6.6 FT) SOUTH SOUTHWEST OF AND ABOUT 0.4 M (1.3 FT) LOWER THAN THE SOUTHWEST EDGE OF PAVEMENT OF ROUTE 105, 12.5 M (41.0 FT) EAST OF POLE NUMBER 14, 89.3 M (293.0 FT) WEST OF POLE NUMBER 3-1/15, AND 2.0 M (6.6 FT) NORTH NORTHEAST OF A FIBERGLASS WITNESS POST.

TRAVERSE TIES



* MAIN TRAVERSE COMPLETED OCTOBER 24, 2000 BY R. GILMAN P.C. & R. BULLOCK

NORTH =
EAST =
ELEV. =

NORTH =
EAST =
ELEV. =

NORTH =
EAST =
ELEV. =

NORTH =
EAST =
ELEV. =

ALIGNMENT TIES

NORTH =
EAST =
ELEV. =

NORTH =
EAST =
ELEV. =

NORTH =
EAST =
ELEV. =

NORTH =
EAST =
ELEV. =

NORTH =
EAST =
ELEV. =

DATUM
 VERTICAL NAVD 88
 HORIZONTAL NAD 83 (96)
 ADJUSTMENT NONE

PROJECT NAME: BRIGHTON
 PROJECT NUMBER: STP 034-3(21)
 FILE NAME: survey\00b24611.dgn PLOT DATE: 12-JUN-2012
 PROJECT LEADER: K. Higgins DRAWN BY: R. Bullock
 DESIGNED BY: _____ CHECKED BY: _____
 TIE SHEET SHEET 7 OF 30