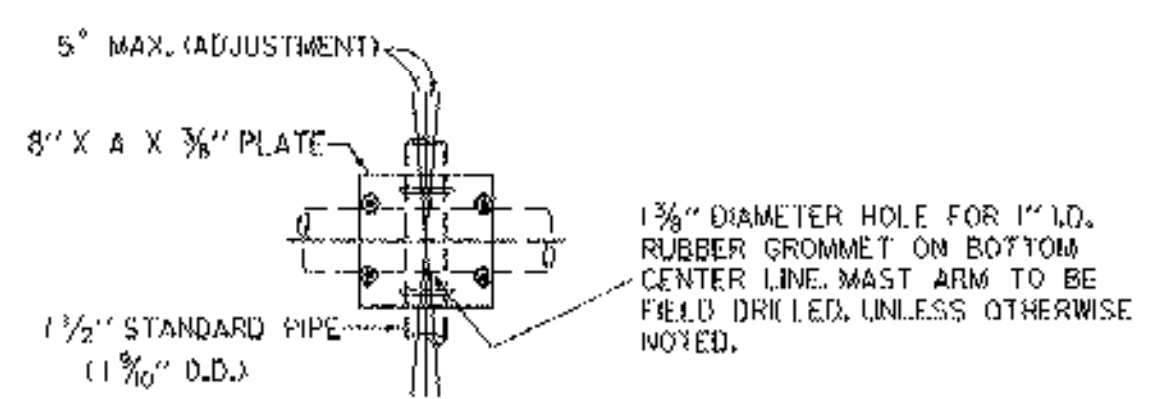
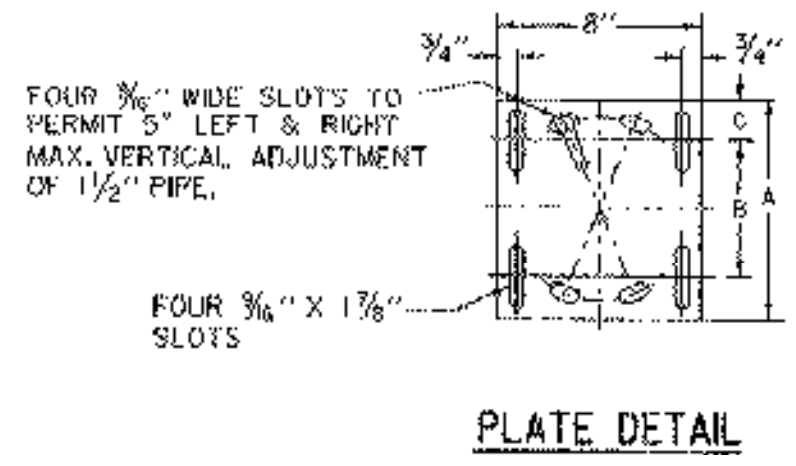
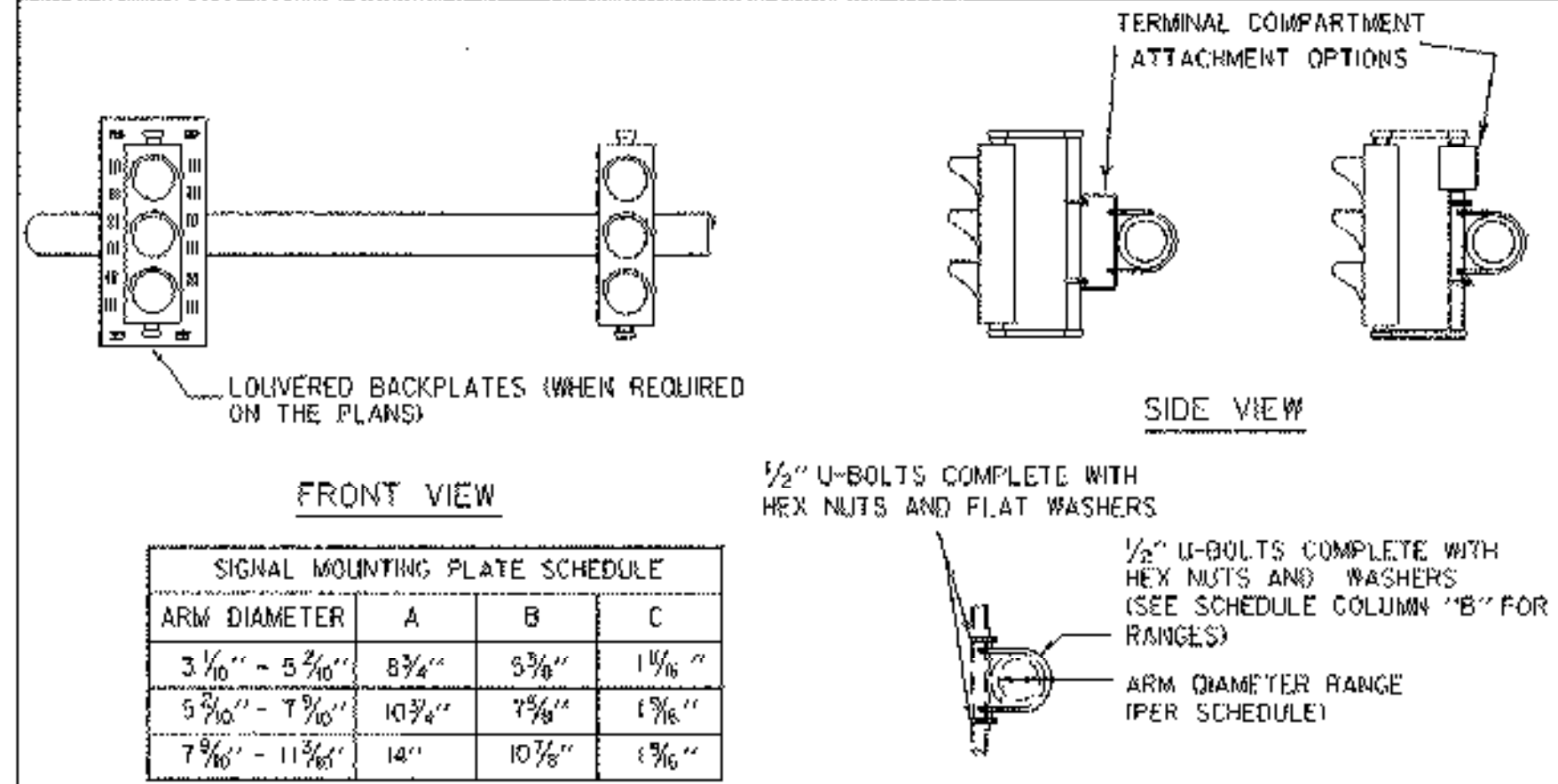


MAST ARM MOUNTING DETAILS FOR FIXED MOUNT TRAFFIC SIGNALS
(PREFERRED METHOD)



1. ALTERNATE METHODS FOR RIGID MOUNTING OF SIGNALS TO MAST ARMS MAY BE USED. FABRICATION DRAWINGS FOR THE ALTERNATE METHOD HARDWARE SHALL BE SUBMITTED TO THE TRAFFIC DESIGN SECTION VIA THE RESIDENT ENGINEER FOR APPROVAL PRIOR TO CONSTRUCTION.
2. ALL RIGIDLY MOUNTED TRAFFIC AND PEDESTRIAN SIGNALS SHALL BE PROVIDED WITH REINFORCEMENT PLATES AT THE ATTACHMENT POINTS.
3. ALL NUTS, BOLTS AND WASHERS SHALL BE STAINLESS STEEL.
4. ALL OTHER MOUNTING BRACKET MATERIALS SHALL BE GALVANIZED STEEL.

SIGNAL MOUNTING PLATE SCHEDULE			
ARM DIAMETER	A	B	C
3 1/8" - 5 3/16"	8 3/4"	5 3/8"	1 3/8"
5 3/16" - 7 1/16"	10 3/4"	7 3/8"	1 3/8"
7 3/16" - 11 3/16"	14"	10 3/8"	1 3/8"

TRAFFIC SHEET		
PROJECT NAME:	SWANTON	
PROJECT NUMBER:	STPG ST 036-1011	
FILE NAME:	pwz/traffic/006150/tb150signal.dgn	PLOT DATE: 19-APR-2006
PROJECT LEADER:	B. NYQUIST	DRAWN BY: TRAFFIC DESIGN
DESIGNED BY:	TRAFFIC DESIGN	CHECKED BY: TRAFFIC DESIGN
	tb150slgs.31	SHEET 19 OF 45