

5' x 4.5' ONE COURSE CEMENT CONCRETE SIDEWALK
 52+00 LT - 53+00 LT
 52+00 RT - 53+00 RT
 54+00 RT - 55+04.5 RT (Ramp 5' wide)
 55+04.5 RT - 55+51.5 RT
 55+51.5 RT - 55+86.5 RT (Ramp 5' wide)
 55+86.5 RT - 58+00 RT

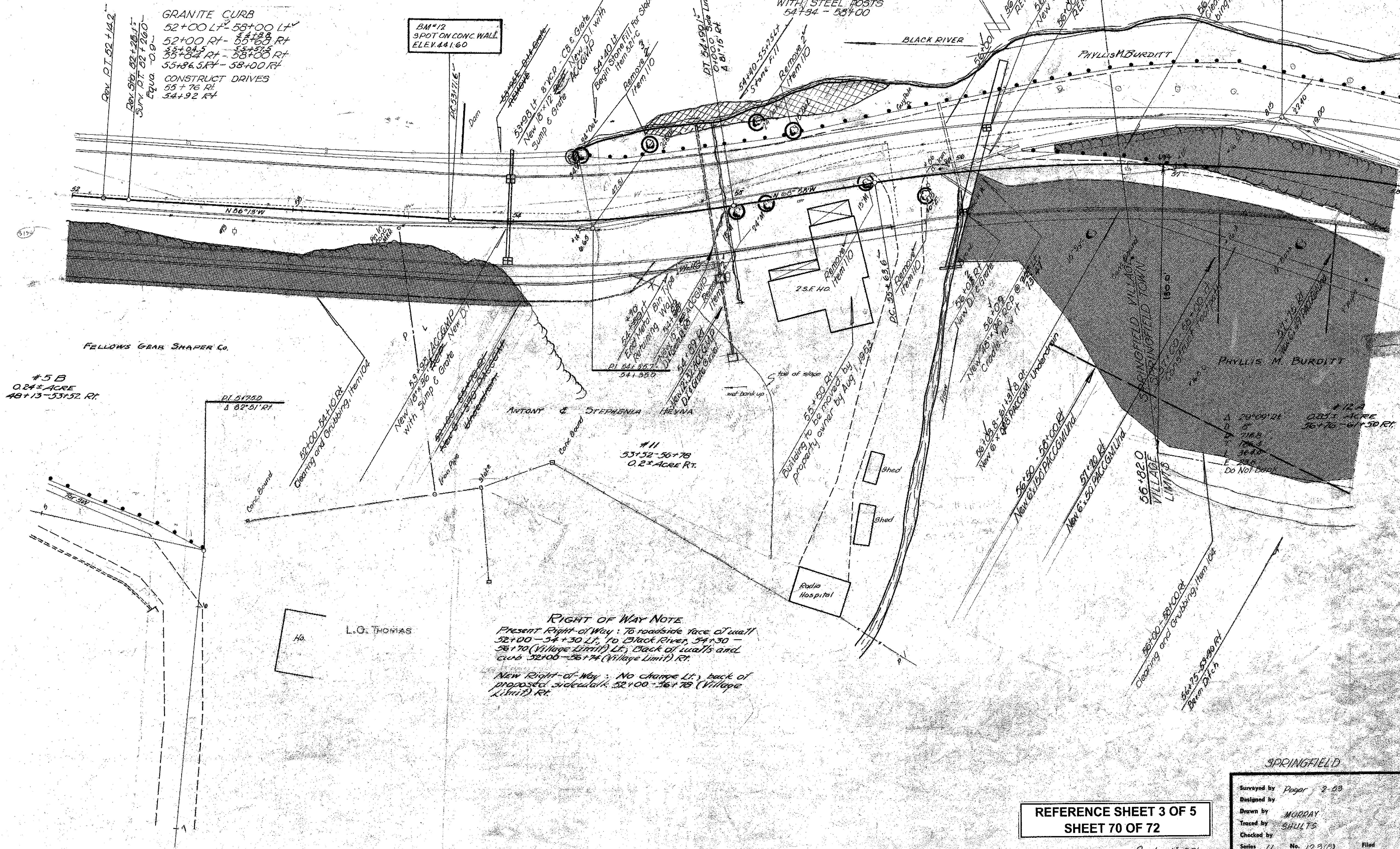
Δ 12°45' LT
 D 10'
 D 573.7'
 T 64.1'
 L 127.5'
 E 3.6'
 Do Not Bank

GRANITE CURB
 52+00 LT - 53+00 LT
 52+00 RT - 53+00 RT
 55+04.5 RT - 55+51.5 RT
 55+86.5 RT - 58+00 RT
 CONSTRUCT DRIVES
 55+76 RT
 54+92 RT

BM*12
 SPOT ON CONC. WALL
 ELEV. 44.60

SEEDING & TOPSOIL
 LT 56+75 - 58+00
 RT 52+00 - 55+68
 55+84 - 58+00

THREE CABLE GUARD RAIL WITH STEEL POSTS
 54+34 - 58+00



#5 B
 0.24 ± ACRE
 48+13 - 53+52 RT

#11
 53+52 - 56+78
 0.2 ± ACRE RT

RIGHT OF WAY NOTE
 Present Right-of-Way: To roadside face of wall 52+00 - 54+30 LT, to Black River, 54+30 - 58+70 (Village Limit) LT, Back of walls and curb 52+00 - 56+74 (Village Limit) RT.
 New Right-of-Way: No change LT, back of proposed sidewalk 52+00 - 56+78 (Village Limit) RT.

REFERENCE SHEET 3 OF 5
 SHEET 70 OF 72

SPRINGFIELD
 Surveyed by Pogor 2-83
 Designed by
 Drawn by MURRAY
 Traced by SAULTS
 Checked by
 Series U No. 123(5) Filed
 Sheet 16 of 96 Sheets

Scale 1" = 20'