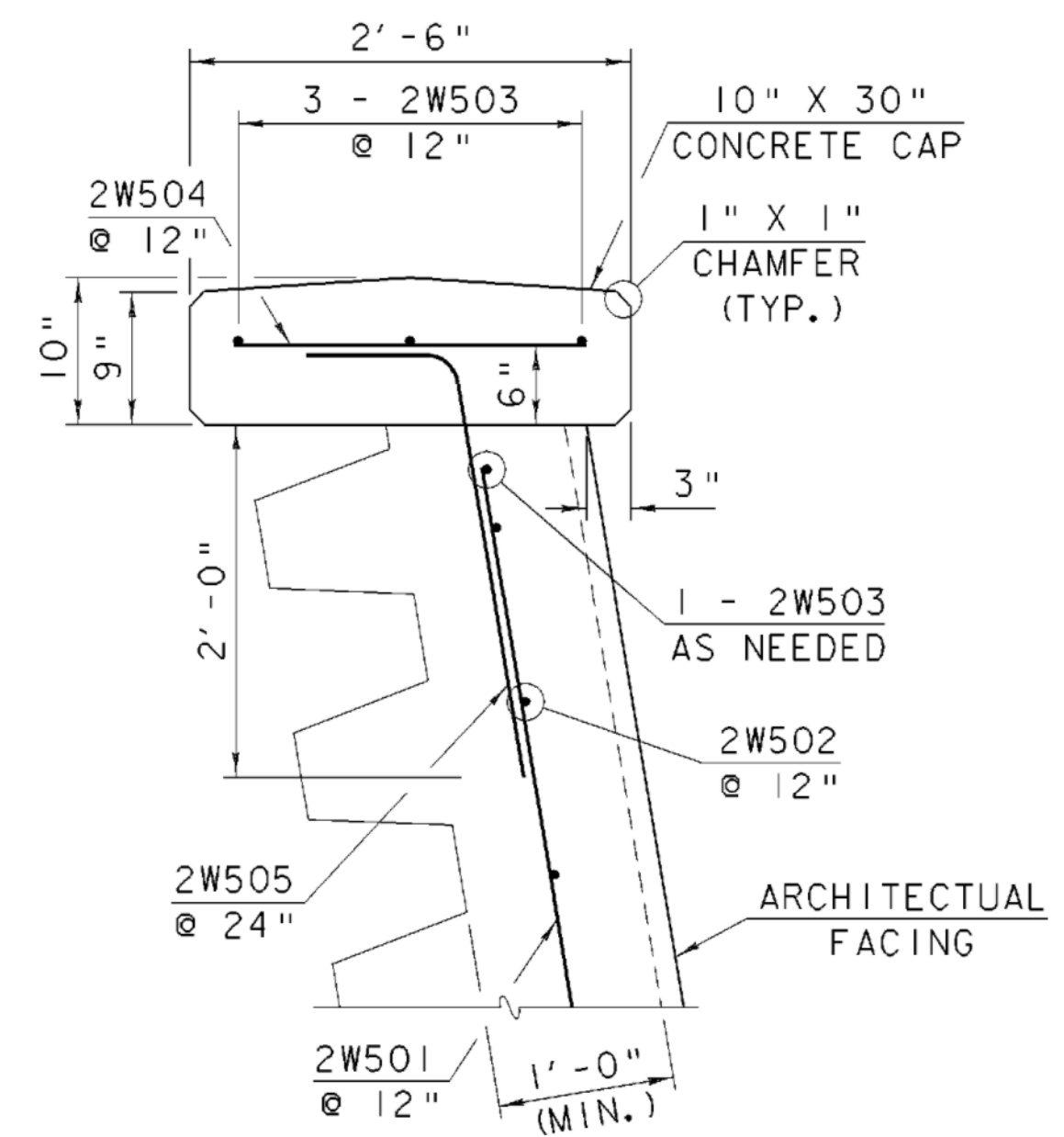
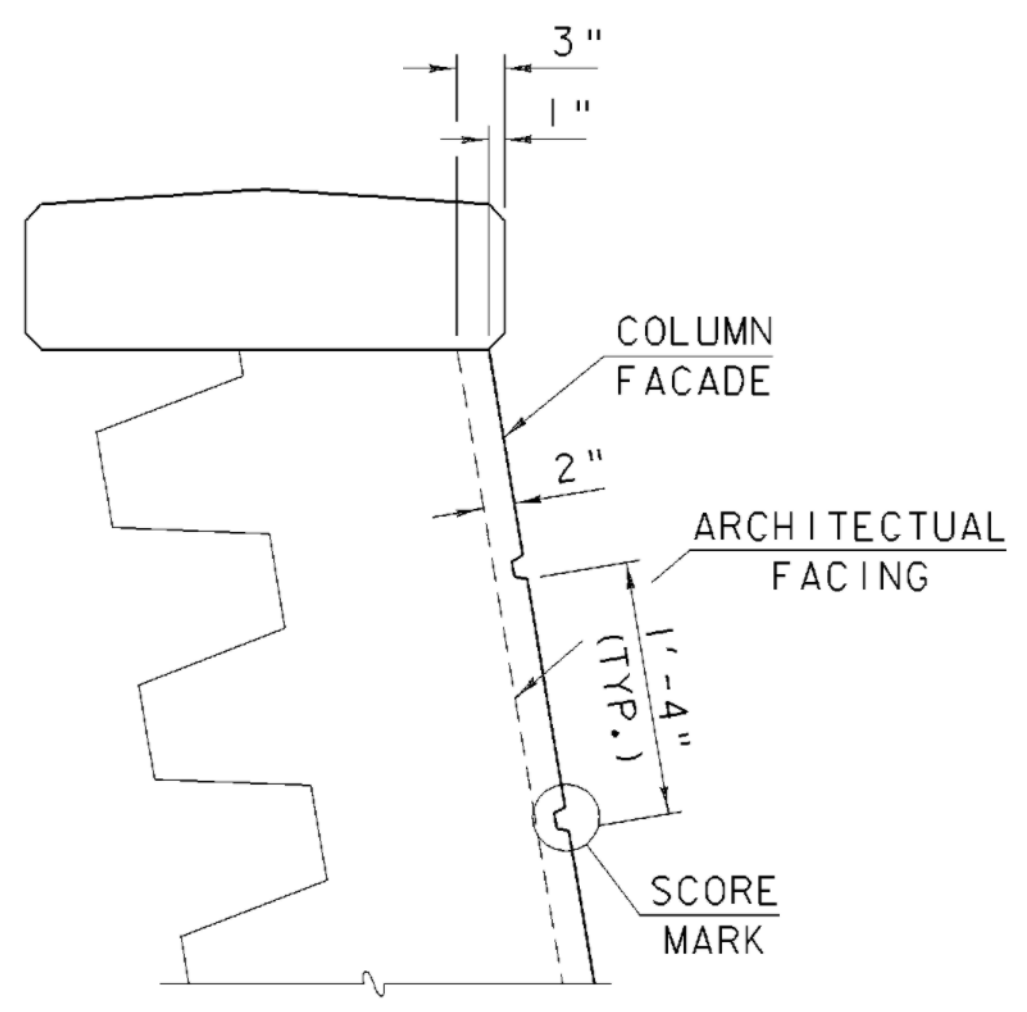
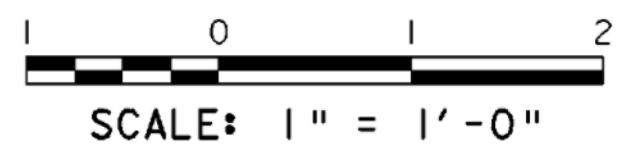


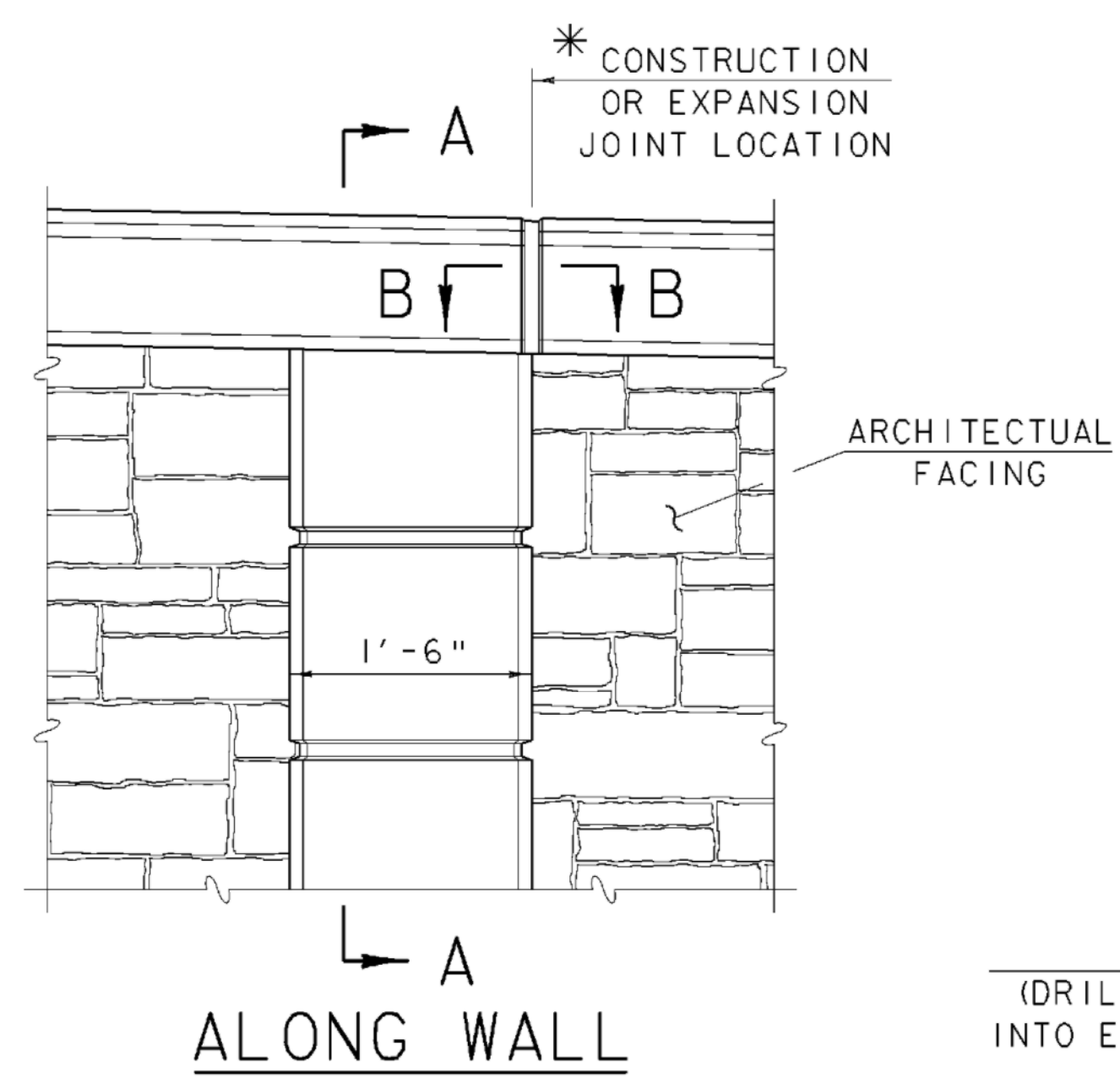
\* SEE NOTES BELOW



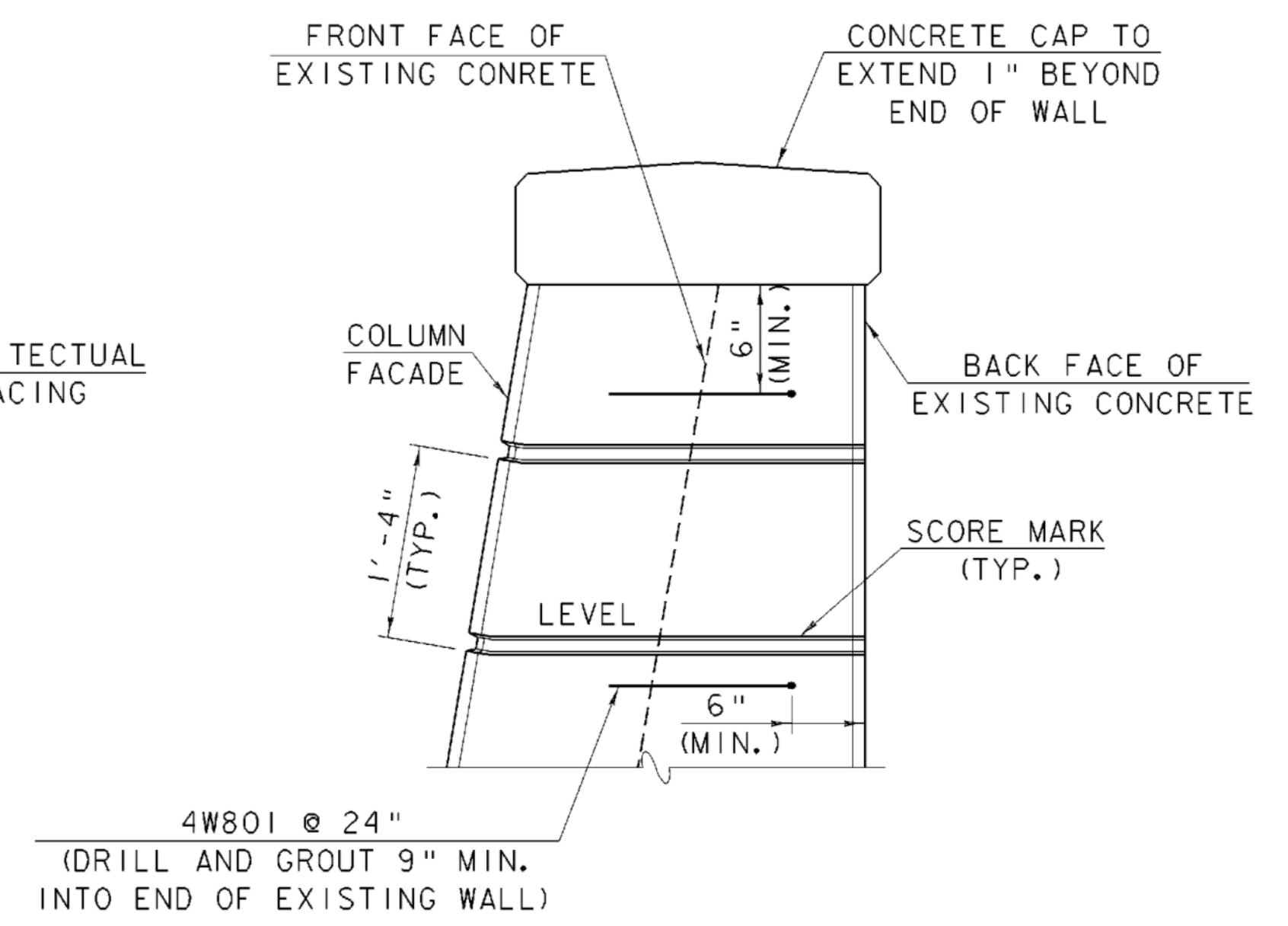
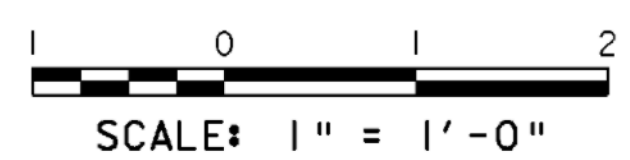
**TOP OF WALL DETAIL AT EXISTING METAL BINWALL**



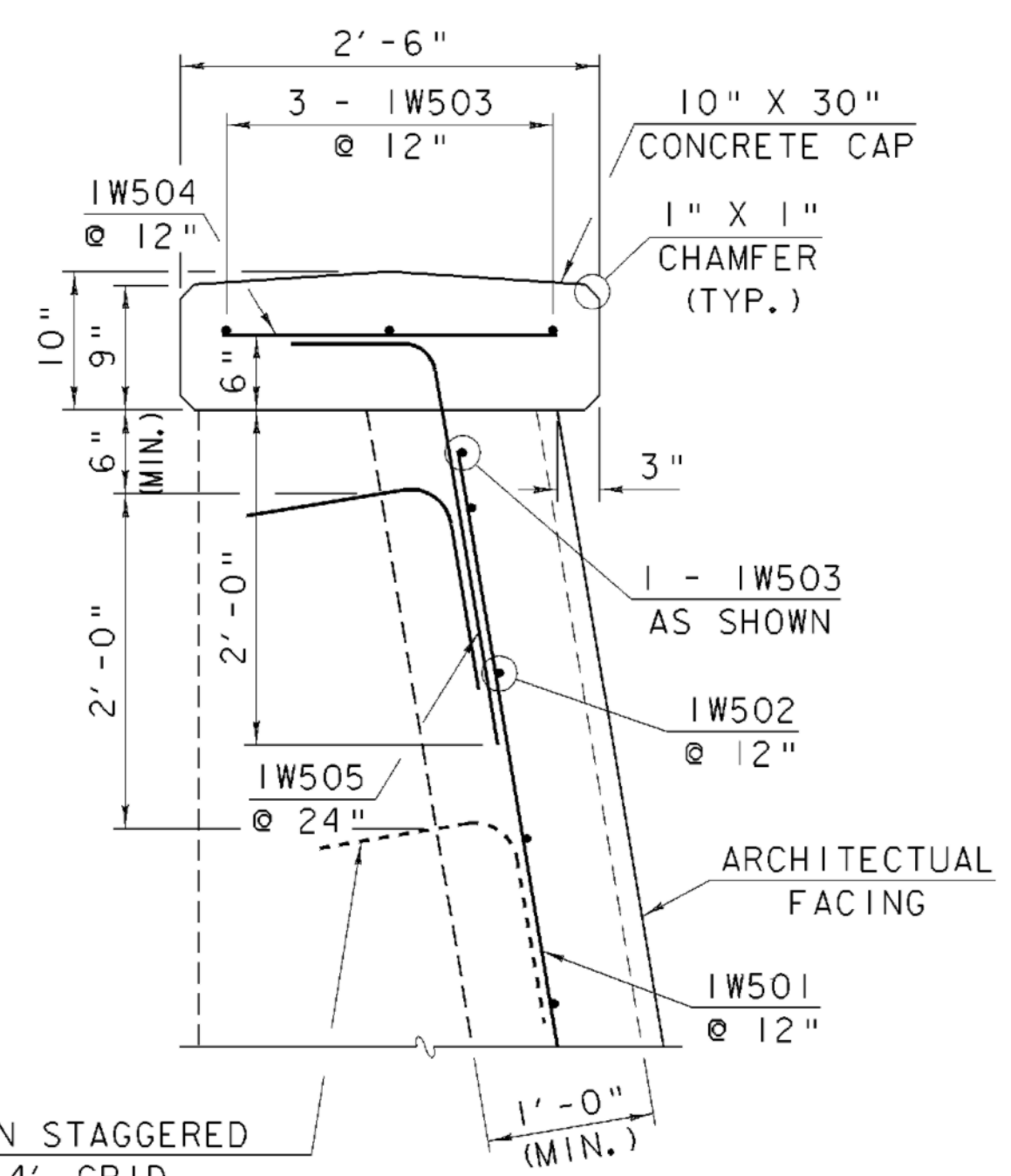
**SECTION A-A**



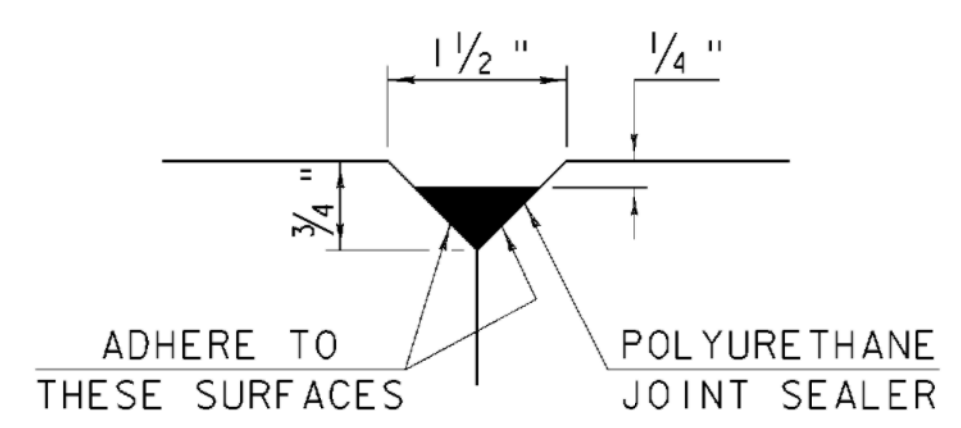
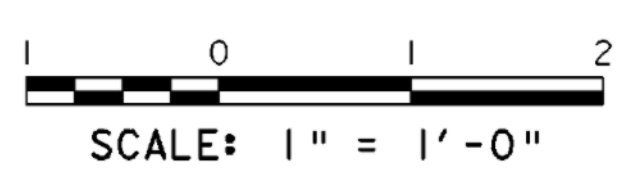
**COLUMN FACADE DETAIL ALONG WALL**



**AT END OF WALL**

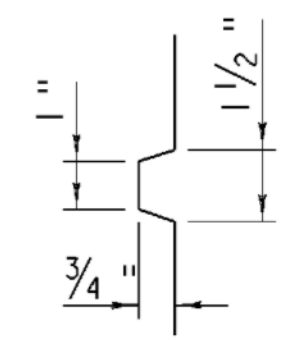


**TOP OF WALL DETAIL AT EXISTING CONCRETE WALL**

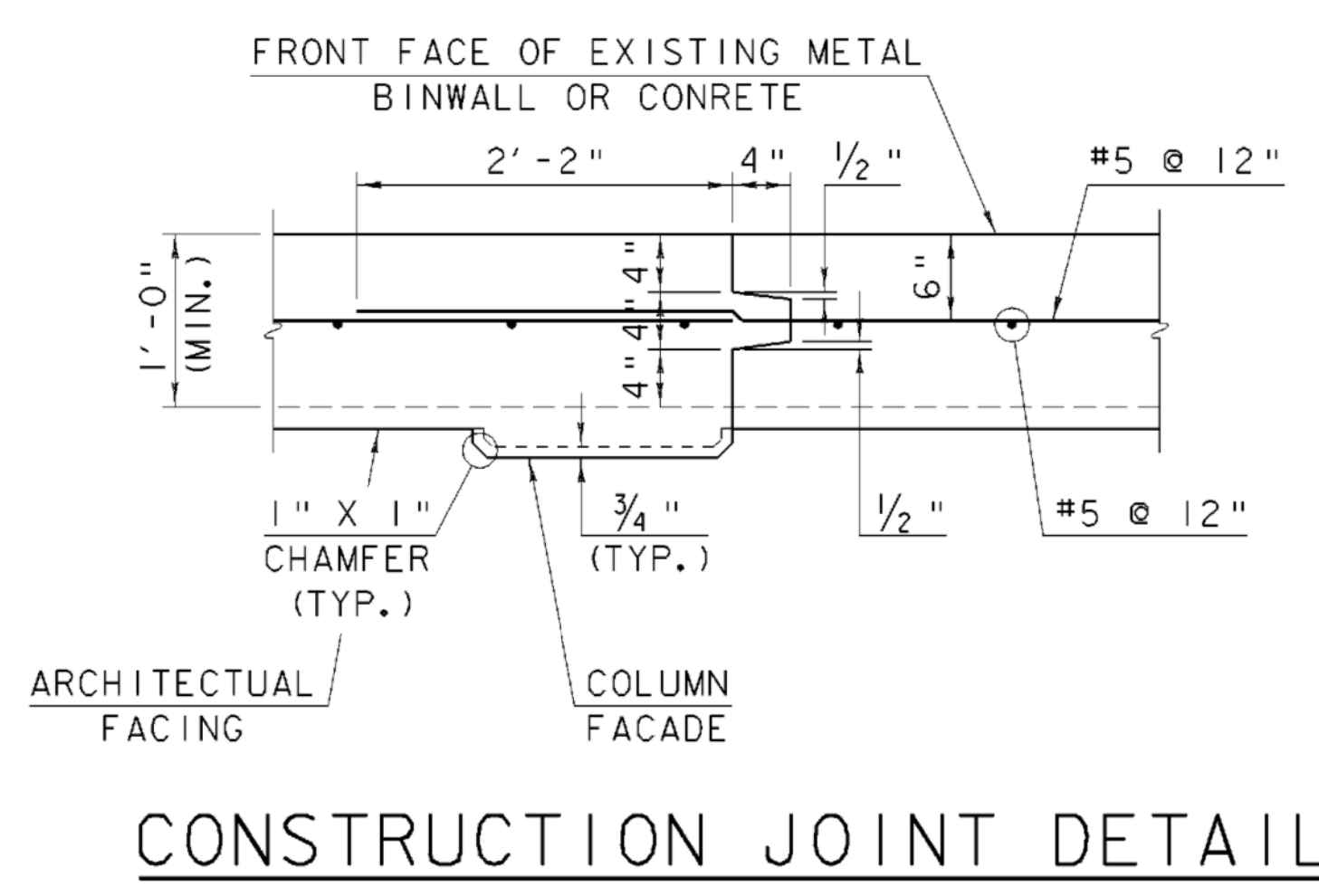


**SECTION B-B NOT TO SCALE**

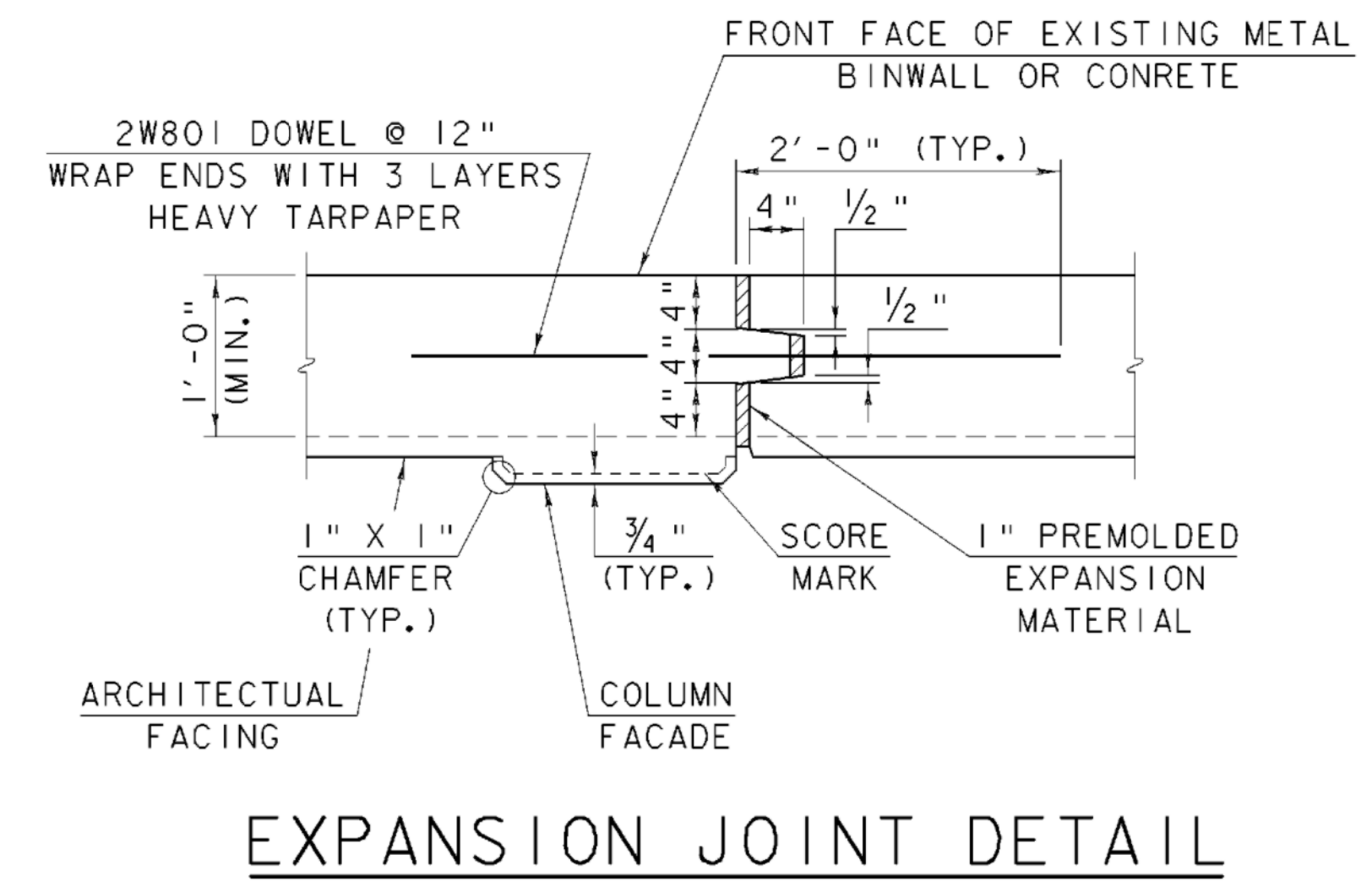
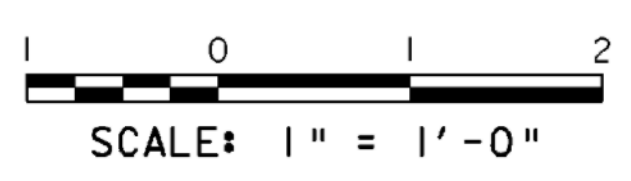
**NOTE:**  
POLYURETHANE JOINT SEALER SHALL MEET THE REQUIREMENTS OF SUBSECTIONS 524.06 (c) AND 707.05 OF THE STANDARD SPECIFICATIONS. COLOR TO MATCH CONCRETE. COST TO BE INCLUDED IN THE UNIT PRICE BID FOR ITEM 501.34, "CONCRETE, HIGH PERFORMANCE CLASS B".



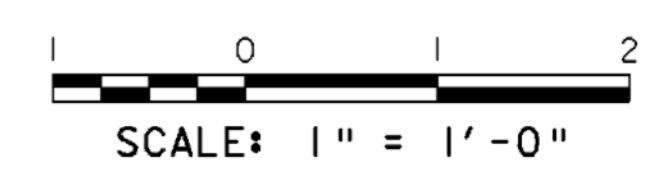
**SCORE MARK DETAIL**



**CONSTRUCTION JOINT DETAIL**



**EXPANSION JOINT DETAIL**



(PAINT SIDE OF KEY WITH BITUMEN TO PREVENT BONDING.)

**NOTES:**

1. CONSTRUCTION JOINT FOR CONCRETE CAP SHALL BE SPACED ~~15'-0"~~ <sup>20'-0"</sup> CENTER TO CENTER. CONCRETE SHALL BE PLACED IN ALTERNATING SECTIONS WITH A MINIMUM OF 48 HOURS DELAY BETWEEN ADJACENT POURS.
2. LONGITUDINAL REINFORCING SHALL PASS THROUGH CONCRETE CAP CONSTRUCTION JOINTS.
3. EXPANSION JOINTS SHALL BE LOCATED AS SHOWN IN THE PLANS EXCEPT NO KEY AS SHOWN IN SECTION B-B, JUST EXPANSION JOINT MATERIAL.

SEE REVISED DETAILS IN VALUE ENGINEERING PLAN SET  
**WALL DETAILS**

PROJECT NAME:	SPRINGFIELD	FILE NAME:	00b124\structures\sb124wd.1	PLOT DATE:	17-AUG-2004
PROJECT NUMBER:	STP 016-2 (10)S	PROJECT MANAGER:	R. WHITCOMB	DRAWN BY:	G. ROY
		DESIGNED BY:	G. ROY	CHECKED BY:	R. WHITCOMB
					SHEET 50 OF 72