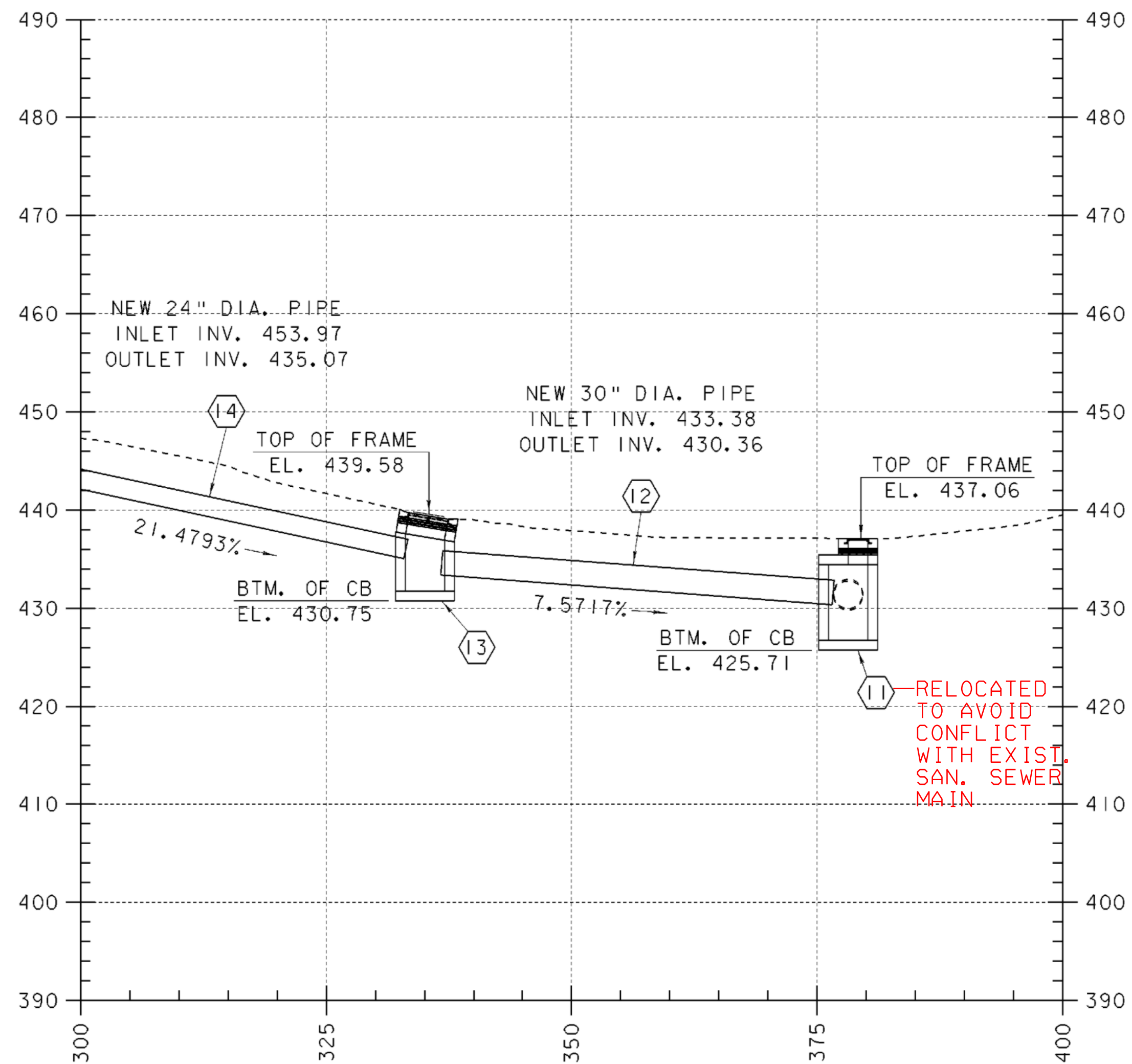
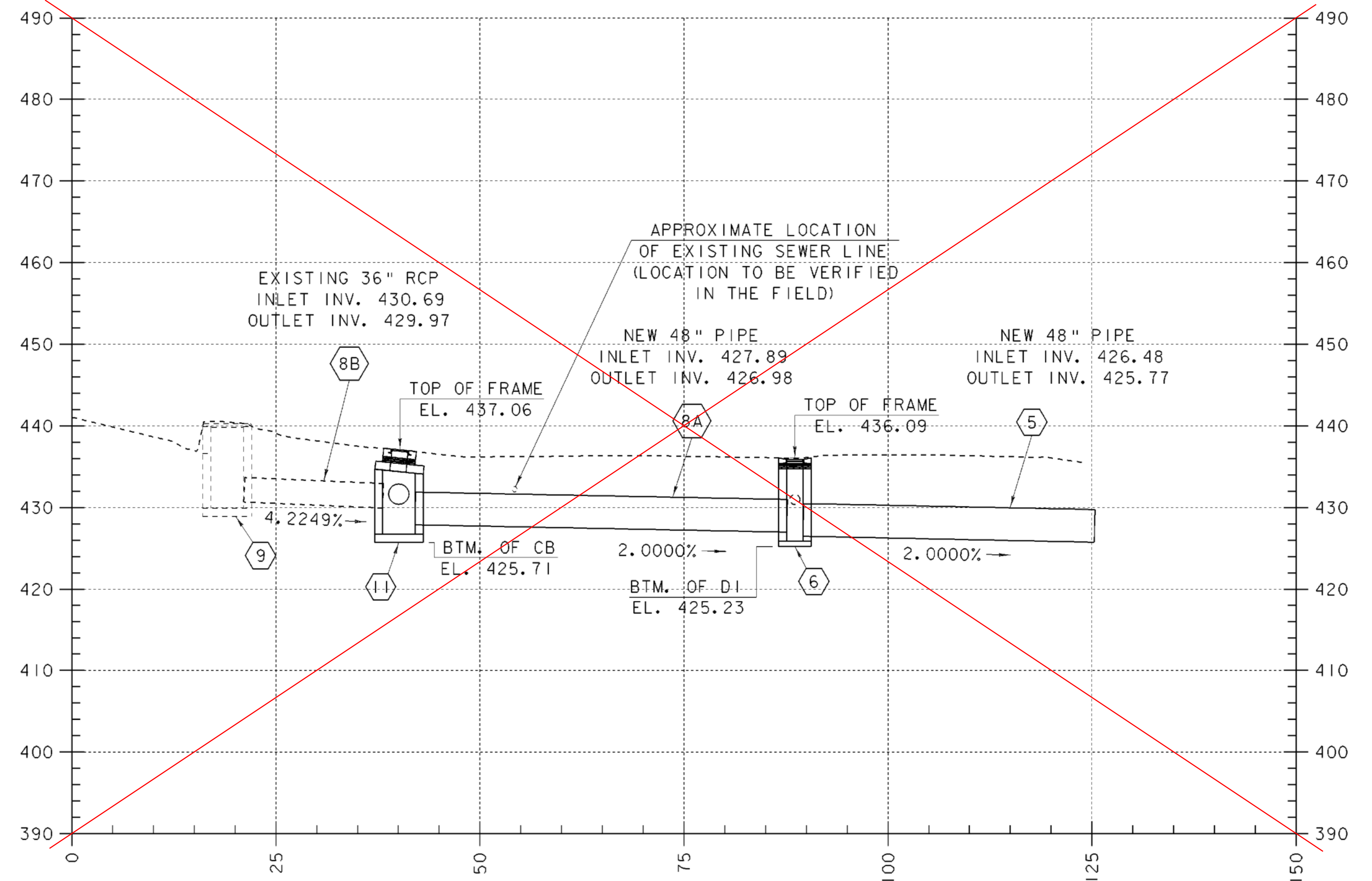


DRAINAGE PROFILE ALONG T.H. 325 (NORTH MAIN ST.)



DRAINAGE PROFILE ACROSS VT. 11 (RIVER ST.)



- NEW 48" Ø RCP NOT INSTALLED AS DIRECTED BY TOWN OF SPRINGFIELD DPW DUE TO POTENTIAL CONFLICTS WITH 12" SANITARY FORCE MAIN LOCATED ADJACENT TO EXISTING CONCRETE SIDEWALK ON SOUTH SIDE OF RIVER RD (RTE 11).
- SEE SKETCH ON 5/9/05 DWR - TEST HOLE DATA.
- SEE LETTER DATED 5/10/05, FROM ROBERT FORQUITES (TOWN MANAGER) DIRECTING VAOT TO LEAVE THE EXISTING 36" Ø RCP IN-PLACE.

SEE AS-BUILT NOTE
ON SHEET 21 OF 72
SEE DRAINAGE DETAIL SHEET 25
FOR DRAINAGE PIPE INFORMATION

DRAINAGE PIPE PROFILES (2)

10 0 10
SCALE: 1" = 10'-0"

PROJECT NAME:	SPRINGFIELD	FILE NAME:	00b124/Structures/sb124dp2.1	PLOT DATE:	17-AUG-2004
PROJECT NUMBER:	STP 016-2 (10)S	PROJECT MANAGER:	R. WHITCOMB	DRAWN BY:	G. ROY
		DESIGNED BY:	G. ROY	CHECKED BY:	R. WHITCOMB
					SHEET 24 OF 72