

GPS CONTROL POINTS

HVCTRL # 1

STANDARD DISK STAMPED  
HANDLY (NOT STAMPED)

N = 291658.068  
E = 1644850.660  
ELEV. = 0.000

TO REACH FROM THE INTERSECTION OF VT ROUTES 11 AND 106 IN SPRINGFIELD GO SOUTHEAST ALONG VT ROUTE 11 FOR 0.5 MI (0.8 KM) TO A CONCRETE SPILLWAY CARRYING THE BLACK RIVER AND THE MARK ON THE RIGHT.

THE STATION IS LOCATED 17.5 M (57.4 FT) WEST SOUTHWEST OF AND 2 M (6.6 FT) LOWER THAN THE SOUTHWEST EDGE OF PAVEMENT OF VT ROUTE 11, 7.2 M (23.6 FT) SOUTHWEST OF POLE 5A, 0.9 M (3.0 FT) WEST SOUTHWEST OF THE NORTHWEST CORNER OF A SINGLE STORY BUILDING, AND 1.2 M (3.9 FT) EAST OF THE WEST EDGE OF THE CONCRETE SPILLWAY FOR THE BLACK RIVER.

- DESCRIPTION PROVIDED BY VERMONT AGENCY OF TRANSPORTATION GEODETIC SURVEY UNIT
- TO ALLOW THE STATE PLANE COORDINATES TO FIT THE AGENCY DESIGN PLANE, SUBTRACT 200,000 FROM THE NORTHING AND 1,600,000 FROM THE EASTING

HVCTRL # 2

STANDARD DISK STAMPED  
ONEILL

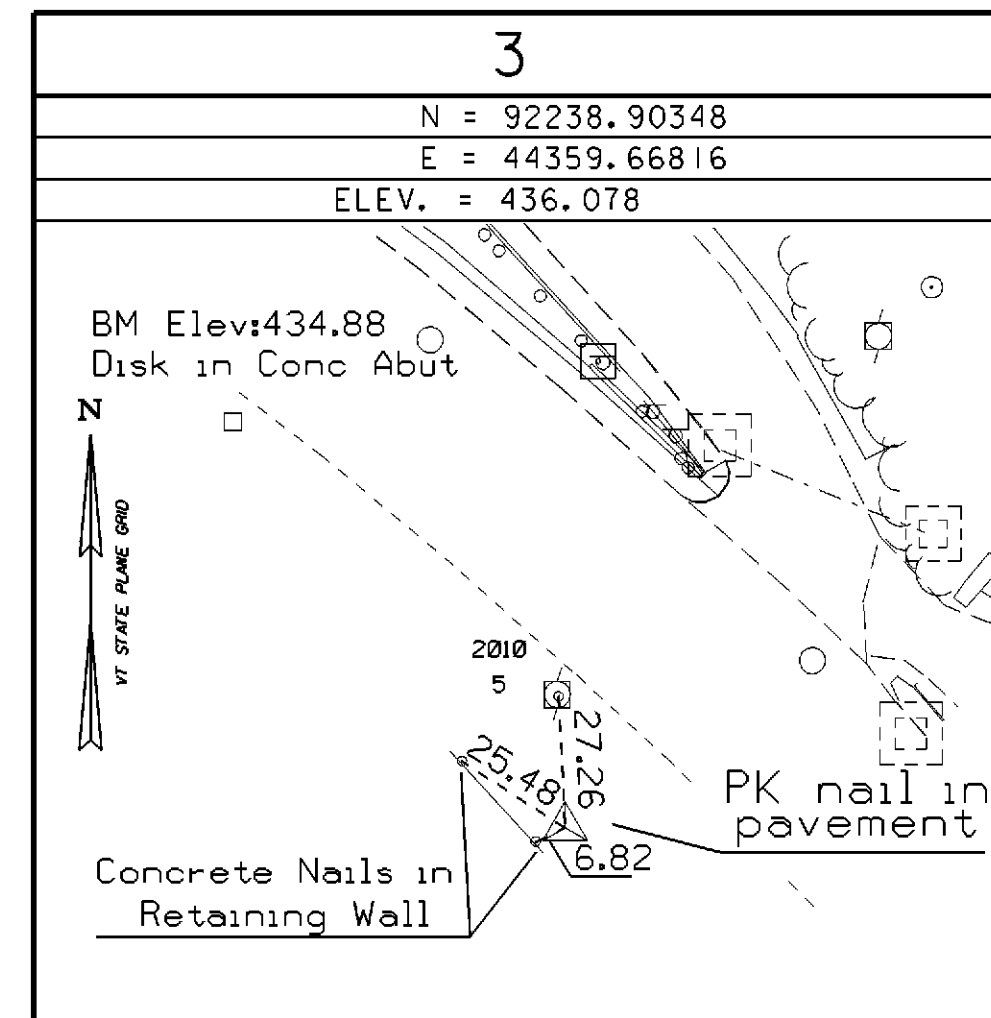
N = 292646.170  
E = 1643742.513  
ELEV. = 450.245

TO REACH FROM THE INTERSECTION OF VT ROUTES 11 AND 106 IN SPRINGFIELD GO SOUTHEAST ALONG VT ROUTE 11 FOR 0.25 MI (0.40 KM) TO THE MARK ON THE LEFT.

OWNERSHIP - FRANCES W. ONEILL 108 VT RT 11 RIVER STREET, SPRINGFIELD, VT

THE STATION IS LOCATED 10.0 M (32.8 FT) NORTH NORTHEAST OF AND 1.0 M (3.3 FT) HIGHER THAN THE NORTHEAST EDGE OF PAVEMENT OF VT ROUTE 11, 8.3 M (27.2 FT) EAST SOUTHEAST OF THE CENTERLINE OF A PAVED DRIVE, 5.5 METERS (18.0 FT) SOUTH OF THE SOUTHWEST CORNER OF A 1½ STORY HOUSE (#108) AND 6.2 M (20.3 FT) WEST SOUTHWEST OF THE SOUTHEAST CORNER OF HOUSE #108

TRAVERSE TIES



• MAIN TRAVERSE COMPLETED 9/29/00 surveyed by R. Gilman (P.C.) R. Bullock

ALIGNMENT TIES

VT 11 POB	VT 11 PC NO. 1	VT 11 PT NO. 1	VT 11 PC NO. 2	VT 11 PT NO. 2	VT 11 POE		
STA. 10+00.00 N = 92595.4953 E = 43721.0857	STA. 10+38.11 N = 92589.4251 E = 43758.7085	STA. 12+30.89 N = 92537.7853 E = 43944.0225	STA. 13+54.63 N = 92491.4761 E = 44058.7760	STA. 17+51.08 N = 92275.9648 E = 44388.5286	STA. 17+95.00 N = 92245.2574 E = 44419.9332		
T. H. 325 POB	T. H. 325 PC NO. 1	T. H. 325 PT NO. 1	T. H. 325 PC NO. 2	T. H. 325 PT NO. 2	T. H. 325 PC NO. 3	T. H. 325 PT NO. 3	T. H. 325 POE
STA. 20+00.00 N = 92266.2962 E = 44398.4168	STA. 20+23.84 N = 92289.0690 E = 44405.4722	STA. 20+68.57 N = 92330.9949 E = 44396.6866	STA. 21+61.80 N = 92401.4787 E = 44335.6660	STA. 22+23.89 N = 92453.4941 E = 44302.1383	STA. 22+95.24 N = 92518.3064 E = 44272.2929	STA. 23+65.92 N = 92567.4105 E = 44223.4816	STA. 24+00.00 N = 92581.8504 E = 44192.6113

TIE SHEET

DATUM	
VERTICAL	NAVD 88
HORIZONTAL	NAD 83/96
ADJUSTMENT	NONE

PROJECT NAME:	SPRINGFIELD	FILE NAME:	00b124\Structures\sb124tie.i	PLOT DATE:	17-AUG-2004
PROJECT NUMBER:	STP 016-2 (10)S	PROJECT MANAGER:	R. WHITCOMB	DRAWN BY:	R. BULLOCK
		DESIGNED BY:	G. ROY	CHECKED BY:	G. ROY
				SHEET	9 OF 72