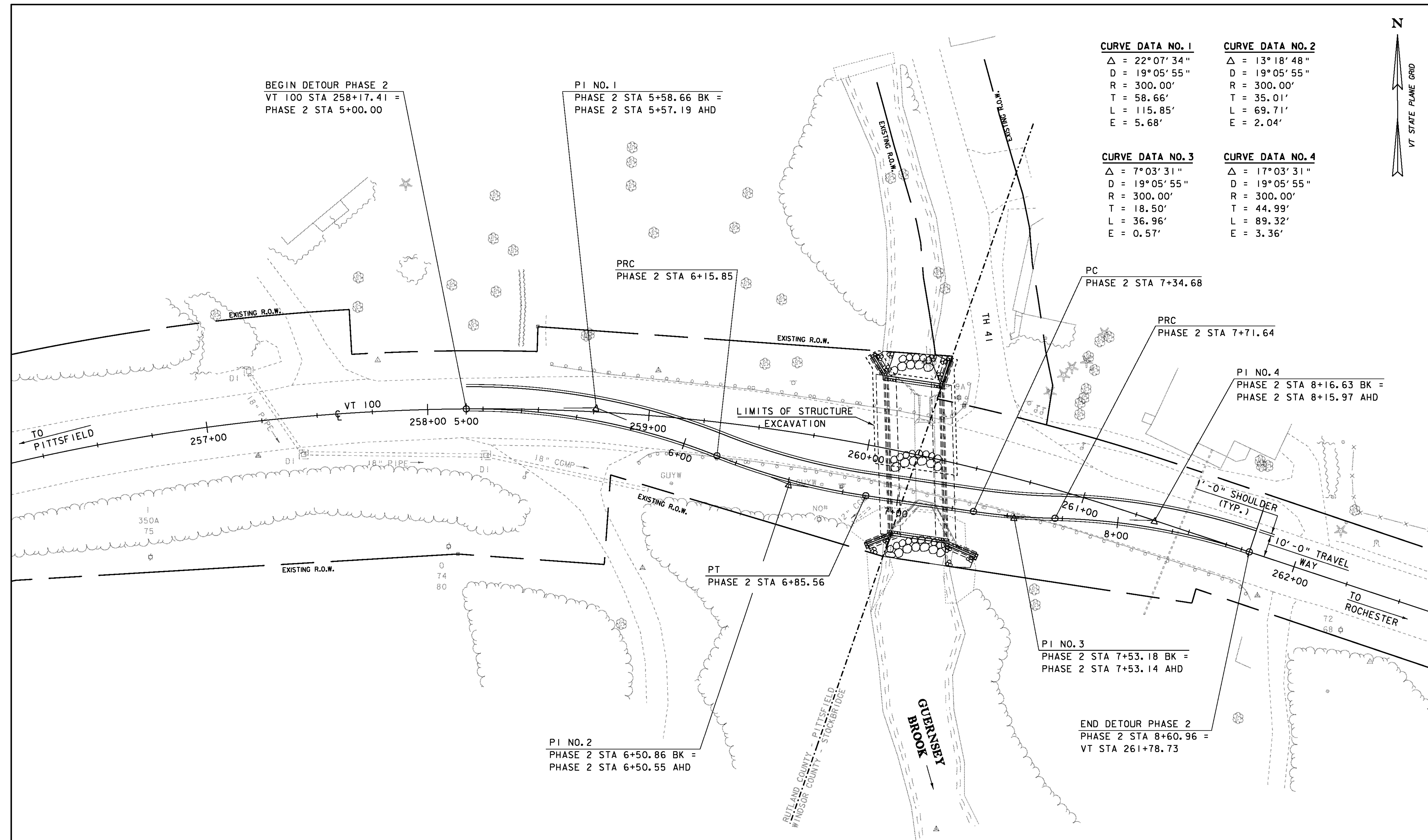




CURVE DATA NO. 1	CURVE DATA NO. 2
$\Delta = 22^{\circ}07'34''$	$\Delta = 13^{\circ}18'48''$
$D = 19^{\circ}05'55''$	$D = 19^{\circ}05'55''$
$R = 300.00'$	$R = 300.00'$
$T = 58.66'$	$T = 35.01'$
$L = 115.85'$	$L = 69.71'$
$E = 5.68'$	$E = 2.04'$

CURVE DATA NO. 3	CURVE DATA NO. 4
$\Delta = 7^{\circ}03'31''$	$\Delta = 17^{\circ}03'31''$
$D = 19^{\circ}05'55''$	$D = 19^{\circ}05'55''$
$R = 300.00'$	$R = 300.00'$
$T = 18.50'$	$T = 44.99'$
$L = 36.96'$	$L = 89.32'$
$E = 0.57'$	$E = 3.36'$



BEGIN DETOUR PHASE 2
 VT 100 STA 258+17.41 =
 PHASE 2 STA 5+00.00

PI NO. 1
 PHASE 2 STA 5+58.66 BK =
 PHASE 2 STA 5+57.19 AHD

PRC
 PHASE 2 STA 6+15.85

PC
 PHASE 2 STA 7+34.68

PRC
 PHASE 2 STA 7+71.64

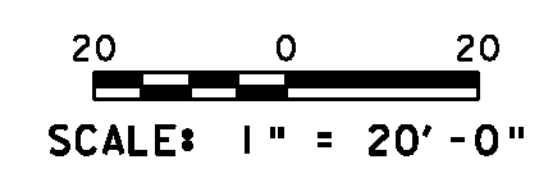
PI NO. 4
 PHASE 2 STA 8+16.63 BK =
 PHASE 2 STA 8+15.97 AHD

PT
 PHASE 2 STA 6+85.56

PI NO. 3
 PHASE 2 STA 7+53.18 BK =
 PHASE 2 STA 7+53.14 AHD

END DETOUR PHASE 2
 PHASE 2 STA 8+60.96 =
 VT STA 261+78.73

PI NO. 2
 PHASE 2 STA 6+50.86 BK =
 PHASE 2 STA 6+50.55 AHD



PROJECT NAME: PITTSFIELD-STOCKBRIDGE	PLOT DATE: 02-SEP-2011
PROJECT NUMBER: STP 022-1(22)S	DRAWN BY: G. ROY
FILE NAME: s00b122bdr_phase.dgn	CHECKED BY: R. YOUNG
PROJECT LEADER: C. P. WILLIAMS	SHEET 15 OF 41
DESIGNED BY: G. ROY	
PHASE 2 DETOUR LAYOUT	