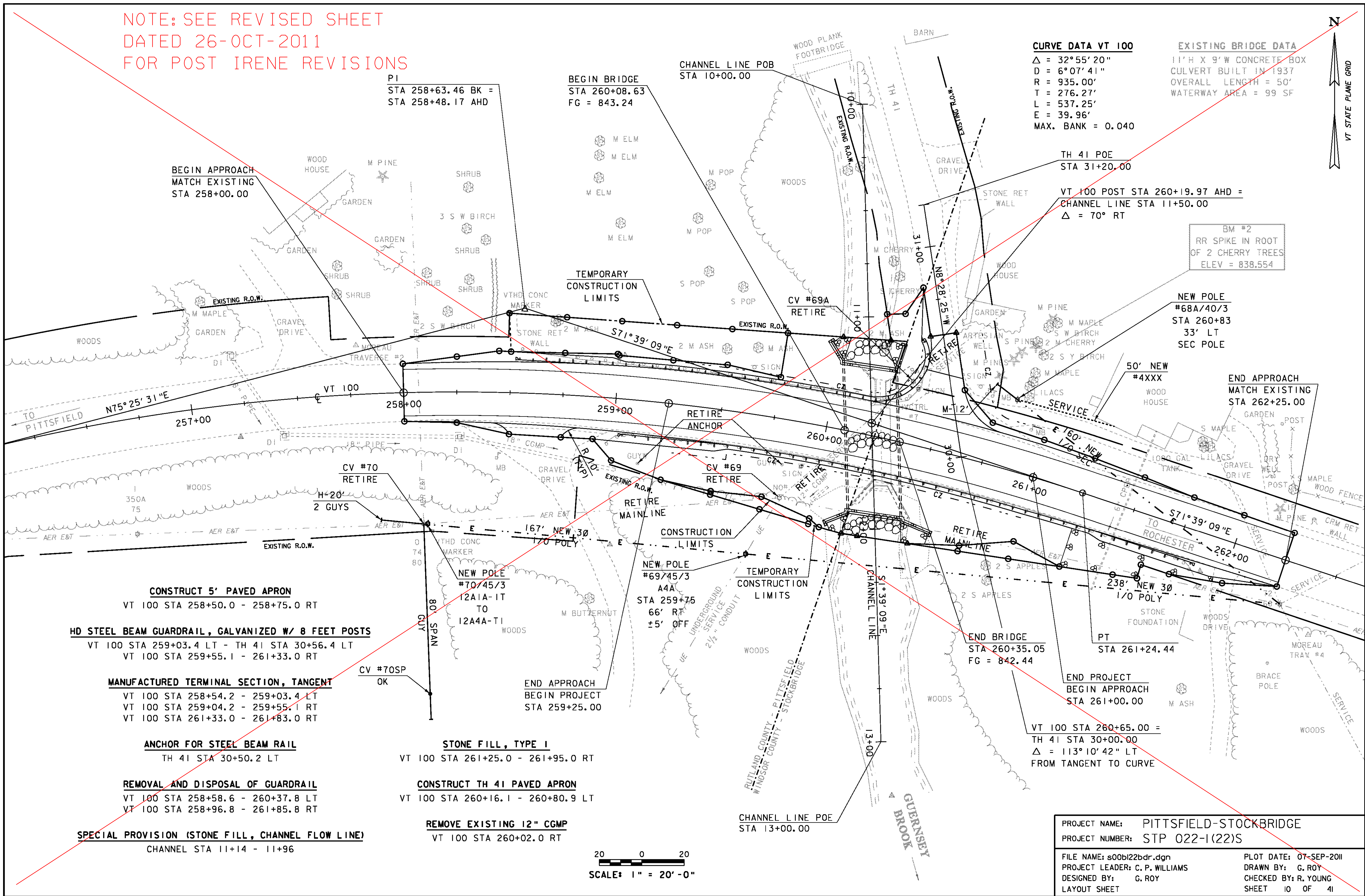
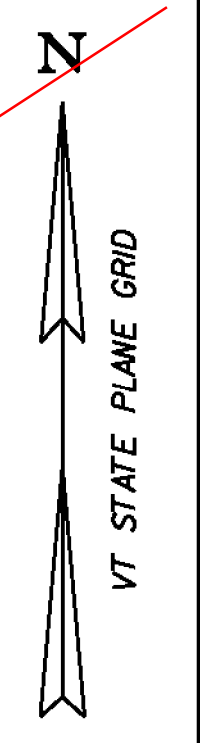


NOTE: SEE REVISED SHEET
DATED 26-OCT-2011
FOR POST IRENE REVISIONS

CURVE DATA VT 100
 $\Delta = 32^\circ 55' 20''$
 $D = 6^\circ 07' 41''$
 $R = 935.00'$
 $T = 276.27'$
 $L = 537.25'$
 $E = 39.96'$
 MAX. BANK = 0.040

EXISTING BRIDGE DATA
 11' H X 9' W CONCRETE BOX
 CULVERT BUILT IN 1937
 OVERALL LENGTH = 50'
 WATERWAY AREA = 99 SF



PI
 STA 258+63.46 BK =
 STA 258+48.17 AHD

BEGIN BRIDGE
 STA 260+08.63
 FG = 843.24

CHANNEL LINE POB
 STA 10+00.00

TH 41 POE
 STA 31+20.00

VT 100 POST STA 260+19.97 AHD =
 CHANNEL LINE STA 11+50.00
 $\Delta = 70^\circ$ RT

BM #2
 RR SPIKE IN ROOT
 OF 2 CHERRY TREES
 ELEV = 838.554

NEW POLE
 #68A/40/3
 STA 260+83
 33' LT
 SEC POLE

END APPROACH
 MATCH EXISTING
 STA 262+25.00

CONSTRUCT 5' PAVED APRON
 VT 100 STA 258+50.0 - 258+75.0 RT

HD STEEL BEAM GUARDRAIL, GALVANIZED W/ 8 FEET POSTS
 VT 100 STA 259+03.4 LT - TH 41 STA 30+56.4 LT
 VT 100 STA 259+55.1 - 261+33.0 RT

MANUFACTURED TERMINAL SECTION, TANGENT
 VT 100 STA 258+54.2 - 259+03.4 LT
 VT 100 STA 259+04.2 - 259+55.1 RT
 VT 100 STA 261+33.0 - 261+83.0 RT

ANCHOR FOR STEEL BEAM RAIL
 TH 41 STA 30+50.2 LT

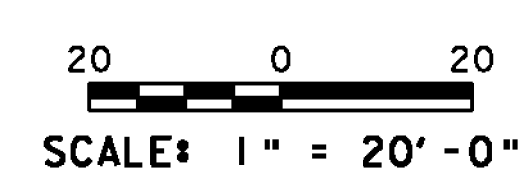
REMOVAL AND DISPOSAL OF GUARDRAIL
 VT 100 STA 258+58.6 - 260+37.8 LT
 VT 100 STA 258+96.8 - 261+85.8 RT

SPECIAL PROVISION (STONE FILL, CHANNEL FLOW LINE)
 CHANNEL STA 11+14 - 11+96

STONE FILL, TYPE I
 VT 100 STA 261+25.0 - 261+95.0 RT

CONSTRUCT TH 41 PAVED APRON
 VT 100 STA 260+16.1 - 260+80.9 LT

REMOVE EXISTING 12" CGMP
 VT 100 STA 260+02.0 RT



END BRIDGE
 STA 260+35.05
 FG = 842.44

END PROJECT
 BEGIN APPROACH
 STA 261+00.00

VT 100 STA 260+65.00 =
 TH 41 STA 30+00.00
 $\Delta = 113^\circ 10' 42''$ LT
 FROM TANGENT TO CURVE

PROJECT NAME: PITTSFIELD-STOCKBRIDGE
 PROJECT NUMBER: STP 022-1(22)S

FILE NAME: s00b122bdr.dgn
 PROJECT LEADER: C. P. WILLIAMS
 DESIGNED BY: G. ROY
 LAYOUT SHEET

PLOT DATE: 07-SEP-2011
 DRAWN BY: G. ROY
 CHECKED BY: R. YOUNG
 SHEET 10 OF 41