

GPS CONTROL POINTS

HVCTRL #1

V 12
 NORTH = 463284.43
 EAST = 1557709.70
 ELEV. = 883.34

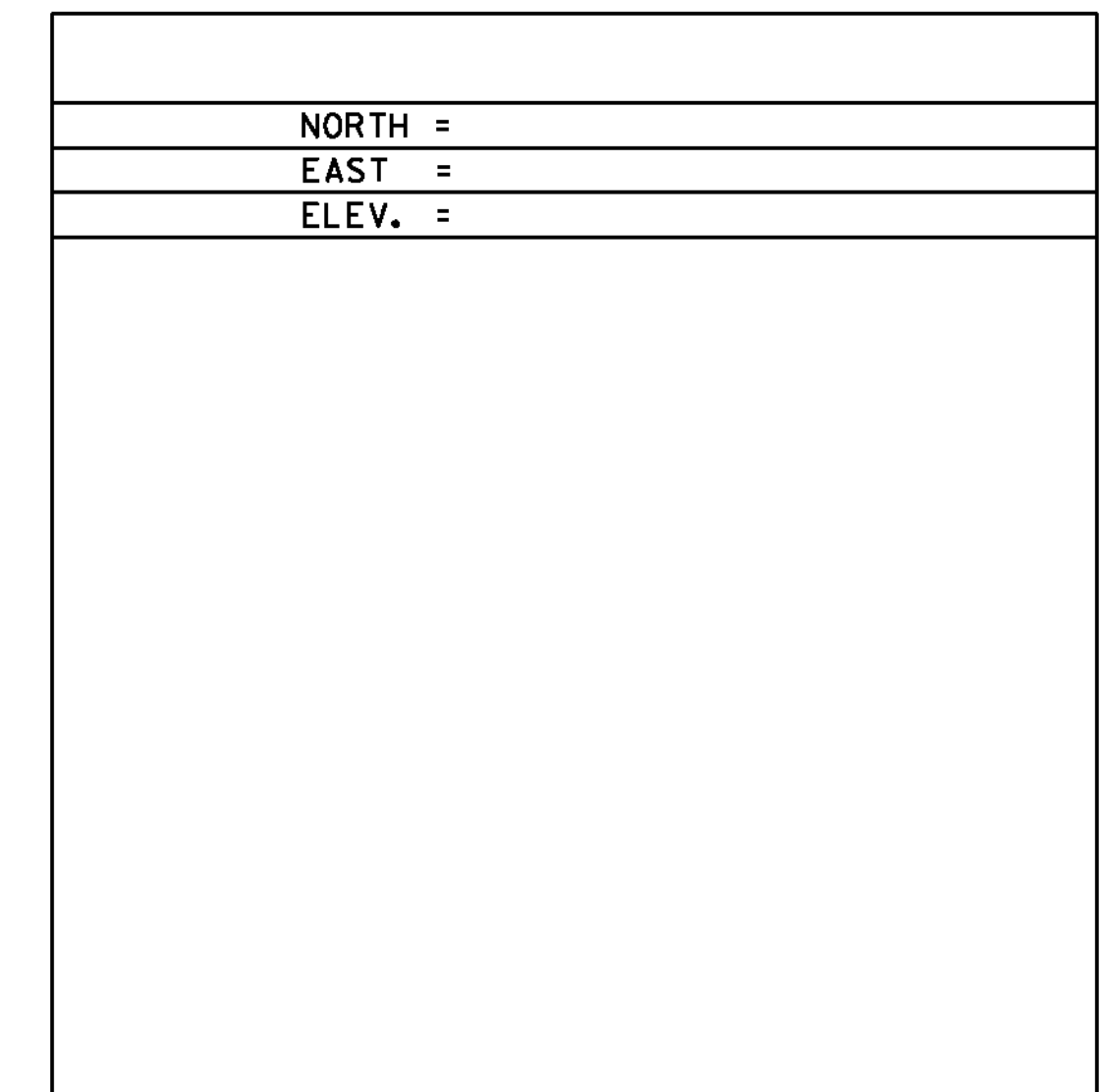
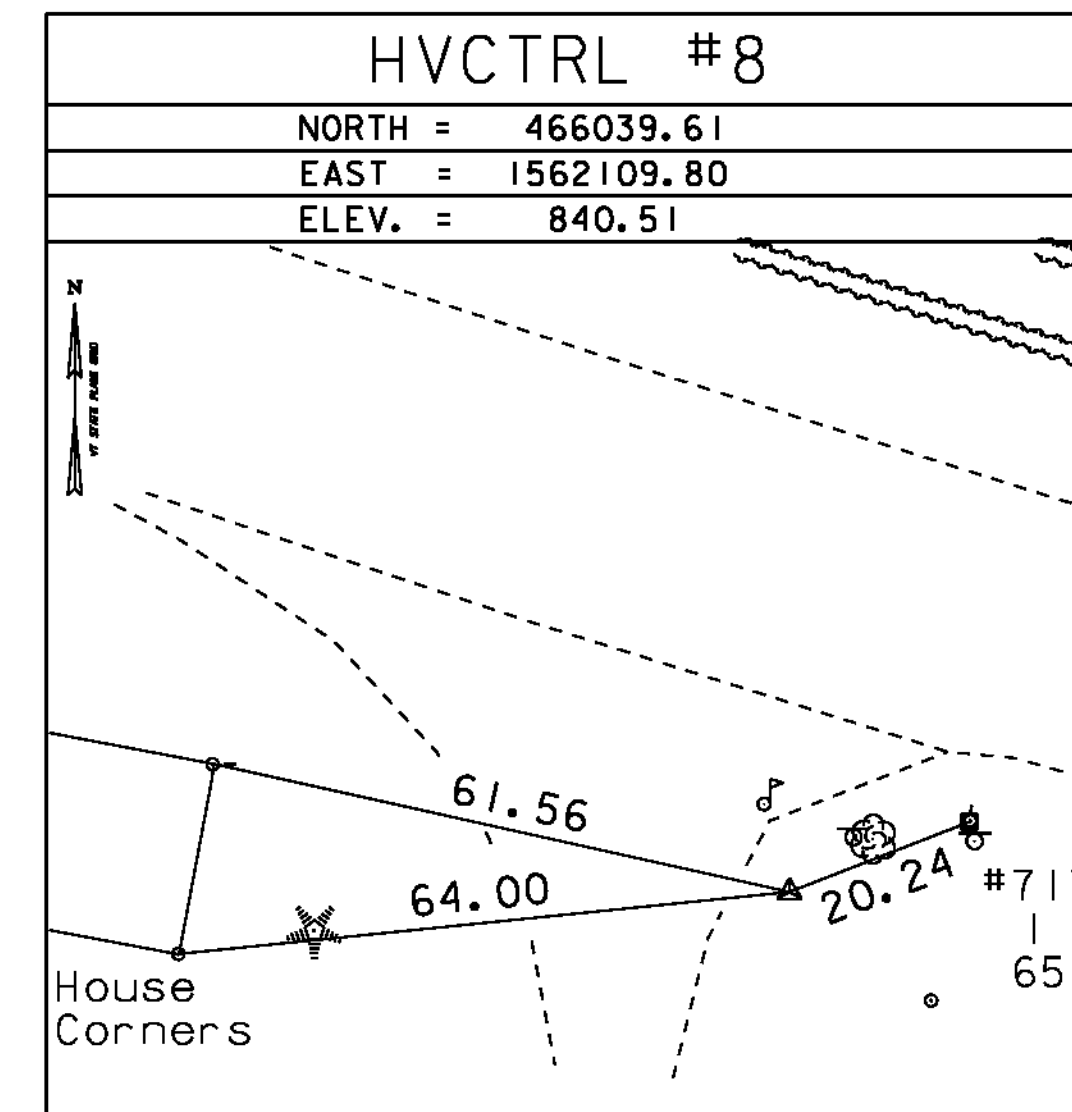
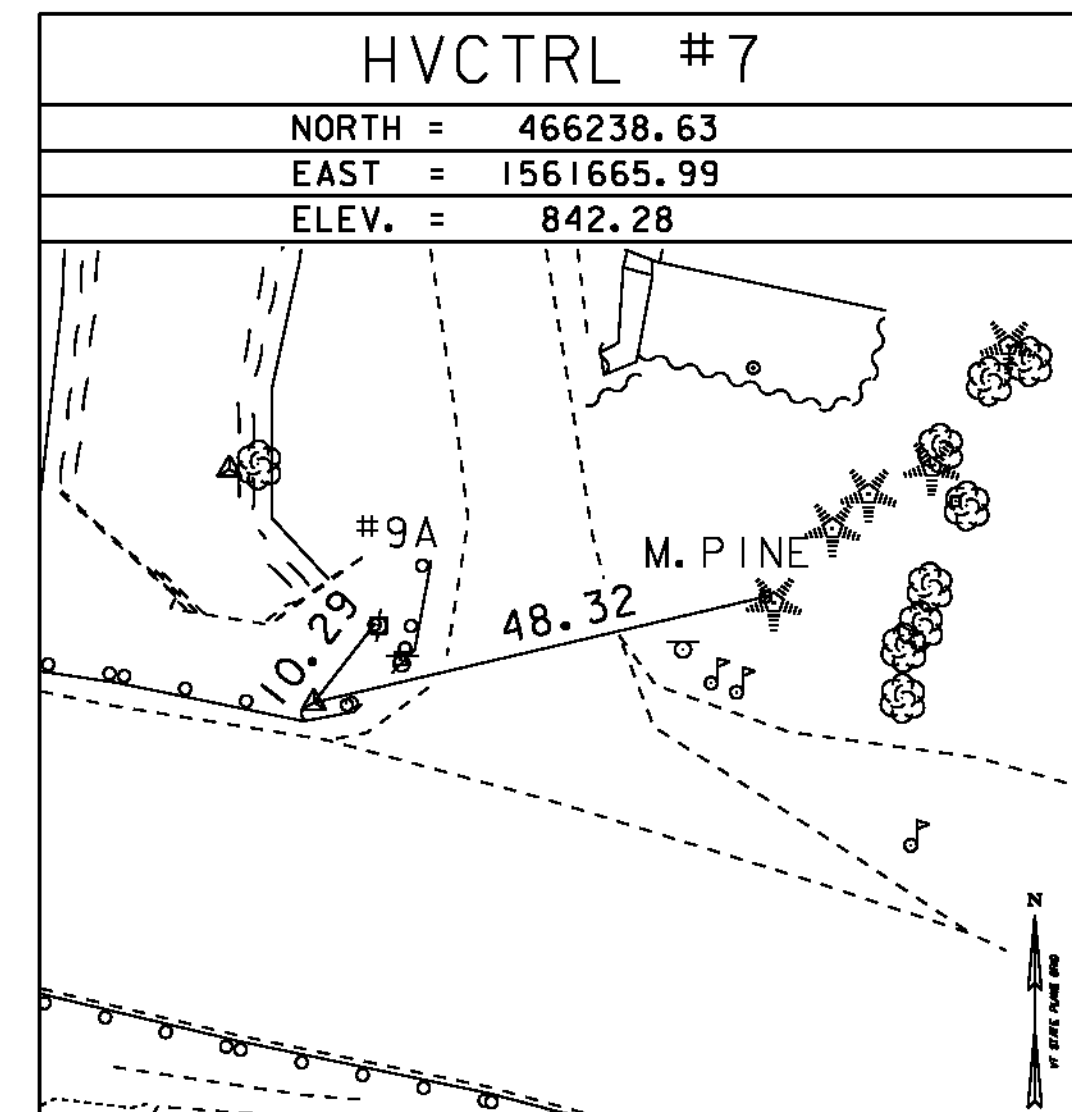
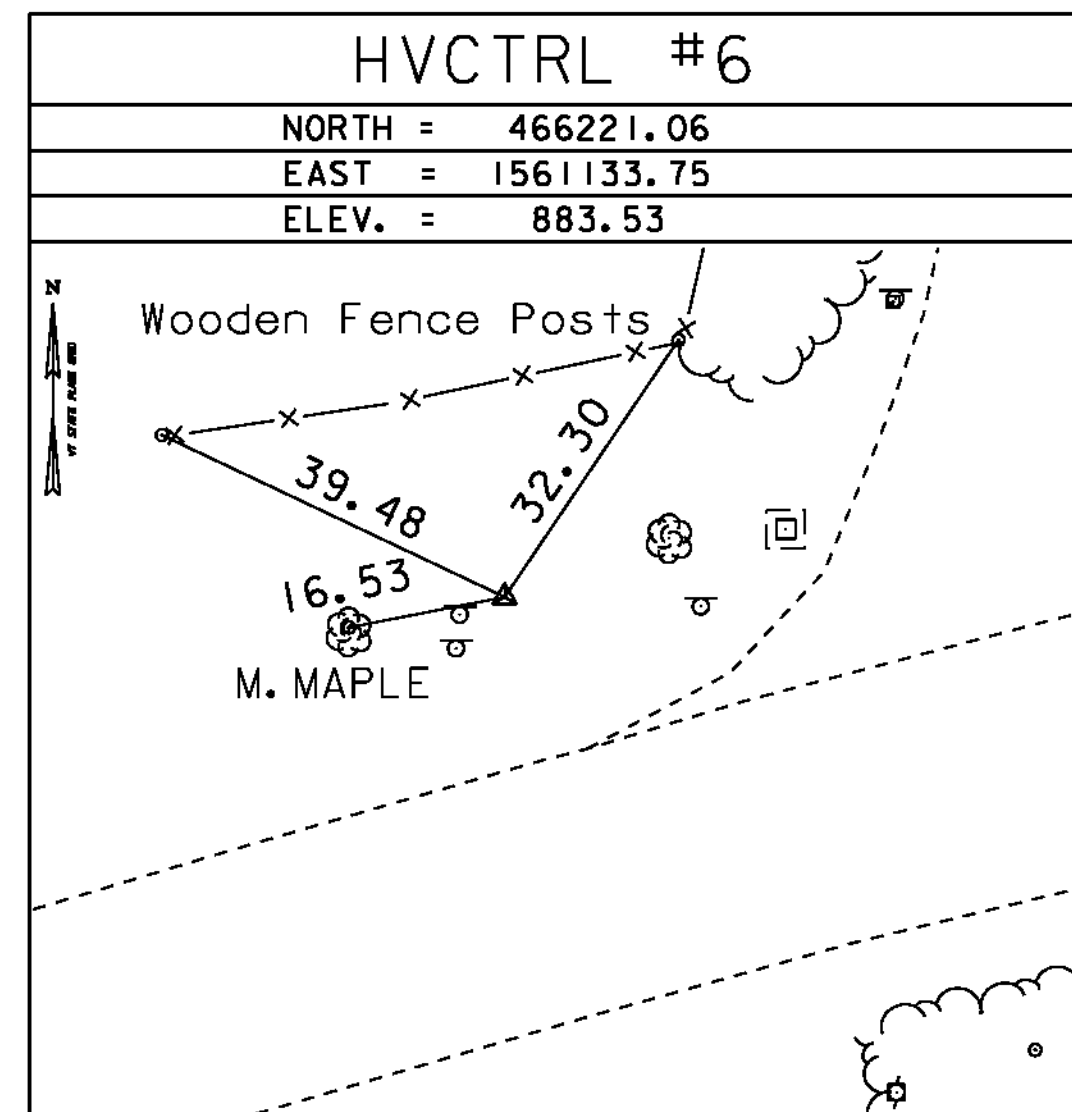
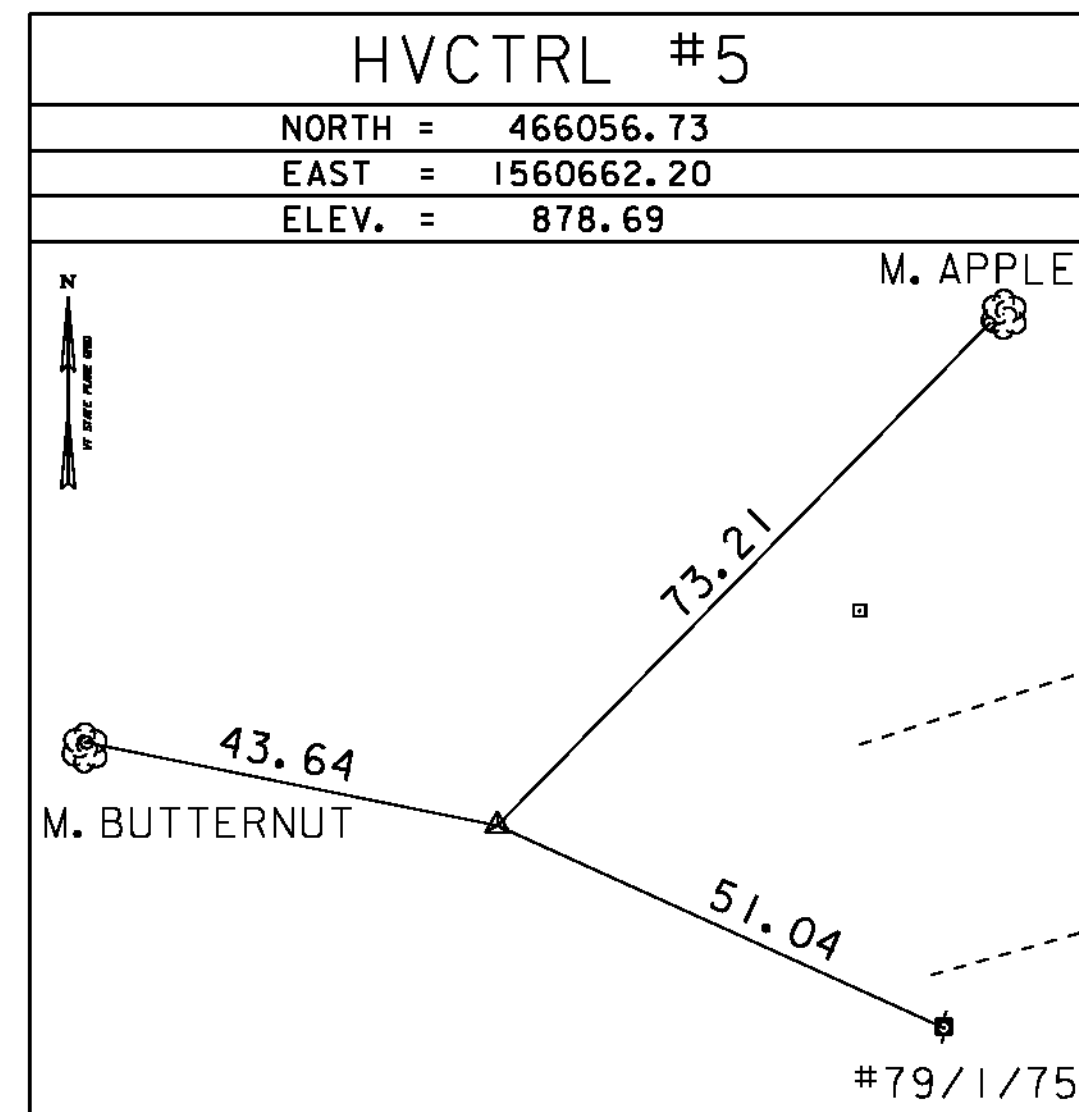
DESCRIBED BY COAST AND GEODETIC SURVEY 1935 IN PITTSFIELD.
 LOCATED AT PITTSFIELD. 36 FEET WEST OF CENTERLINE OF STATE ROAD NO. 100. 3.3 FEET SOUTH OF
 THE NORTHEAST CORNER OF PITTSFIELD CEMETERY FENCE. STANDARD TABLET SET IN TOP OF CONCRETE
 POST 3 INCHES HIGH.

HVCTRL #50 = #8

PITTSFIELD TEMP 2
 NORTH = 466039.61
 EAST = 1562109.80
 ELEV. = 840.51

TO REACH THE MARK FROM THE POST OFFICE IN PITTSFIELD, PROCEED NORTH ALONG VT 100 FOR 1.0
 MI (1.6 KM) TO THE MARK ON THE RIGHT. TO REACH THE MARK FROM THE JUNCTION OF VT 107 AND
 VT 12 IN BETHEL, PROCEED SOUTH ALONG VT 107 THROUGH THE JUNCTION OF VT 100 AND VT 107
 11.9 MI (19.2 KM) TO THE MARK ON THE LEFT. THE MARK IS 62.0 FT (18.9 M) NORTH OF A BROWN
 GARAGE, 32 FT (9.8 M) EAST AND .3 FT (9.1 CM) LOWER THAN THE CENTERLINE OF VT 100, 20 FT
 (6.1 M) SOUTH OF A COMBINATION POLE NUMBER 71/1/65. A WOODEN WITNESS ACCOMPANIES THE MARK.
 THE MARK IS A CENTERPUNCHED REBAR 3 CM BELOW GROUND SURFACE THE TWO TEMP MARKS ARE NOT
 INDIVISIBLE

TRAVERSE TIES



* Main Traverse Completed 07-13-2006 by R. GILMAN, P.C & P. WINTERS & S. HISMAN

ALIGNMENT DATA

VERMONT 100			
	STATION	NORTHING	EASTING
POB	253+83.00	466155.298	1561026.426
PI	255+01.94	466190.046	1561140.182
PC	255+87.19	466211.498	1561222.687
PI	258+63.46	466281.019	1561490.064
	Radius:		935.00
	Delta:	32° 55' 19.42"	Right
	Degree of Curvature (Arc):	6° 07'	40.41"
	Length:		537.25
	Tangent:		276.27
	Chord:		529.89
	Middle Ordinate:		38.32
	External:		39.96
PT	261+24.44	466194.056	1561752.288
PC	264+91.59	466078.484	1562100.776
PI	268+09.22	465978.501	1562402.261
	Radius:		1150.00
	Delta:	30° 52' 49.56"	Left
	Degree of Curvature (Arc):	4° 58'	56.07"
	Length:		619.81
	Tangent:		317.63
	Chord:		612.34
	Middle Ordinate:		41.50
	External:		43.06
PT	271+11.40	466047.428	1562712.323
POE	273+22.09	466093.146	1562917.985

TOWN HIGHWAY 41			
	STATION	NORTHING	EASTING
POB	30+00.00	466210.961	1561695.312
POE	31+20.00	466329.651	1561677.629

DATUM	
VERTICAL	NAVD 88
HORIZONTAL	NAD 83(92)
ADJUSTMENT	Compass

PROJECT NAME: PITTSFORD - STOCKBRIDGE
 PROJECT NUMBER: STP 022-1(22) S

FILE NAME: 00b122\survey\x00b122+1.dgn PLOT DATE: 02-SEP-2011
 PROJECT LEADER: C. P. WILLIAMS DRAWN BY: R. Bullock
 DESIGNED BY: G. ROY CHECKED BY: R. YOUNG
 TIE SHEET SHEET 7 OF 41

ALIGNMENT DATA CURRENT AS OF 12/15/2010