

SEE SHEET 2 FOR INDEX OF SHEETS  
AND LIST OF STANDARDS

# STATE OF VERMONT AGENCY OF TRANSPORTATION



## PROPOSED IMPROVEMENT BRIDGE PROJECT

TOWNS OF PITTSFIELD AND STOCKBRIDGE  
COUNTIES OF RUTLAND AND WINDSOR

ROUTE NO : VT RT 100, MINOR ARTERIAL BRIDGE NO : 127

PROJECT LOCATION: BEGINNING AT A POINT APPROXIMATELY 0.026 MILE WEST FROM THE JUNCTION OF  
VT 100 AND TH 41 AND EXTENDING EASTERLY ALONG VT 100 FOR 175 FEET.

PROJECT DESCRIPTION: REPLACEMENT OF EXISTING BOX CULVERT WITH A PRECAST CONCRETE STRUCTURE ALONG  
WITH RELATED ROADWAY AND CHANNEL WORK.

LENGTH OF STRUCTURE: 26.42 FEET  
LENGTH OF ROADWAY: 148.58 FEET  
LENGTH OF PROJECT: 175.00 FEET

BEGIN BRIDGE  
STA 260+08.63

END BRIDGE  
STA 260+35.05

BEGIN PROJECT  
STA 259+25.00

END PROJECT  
STA 261+00.00

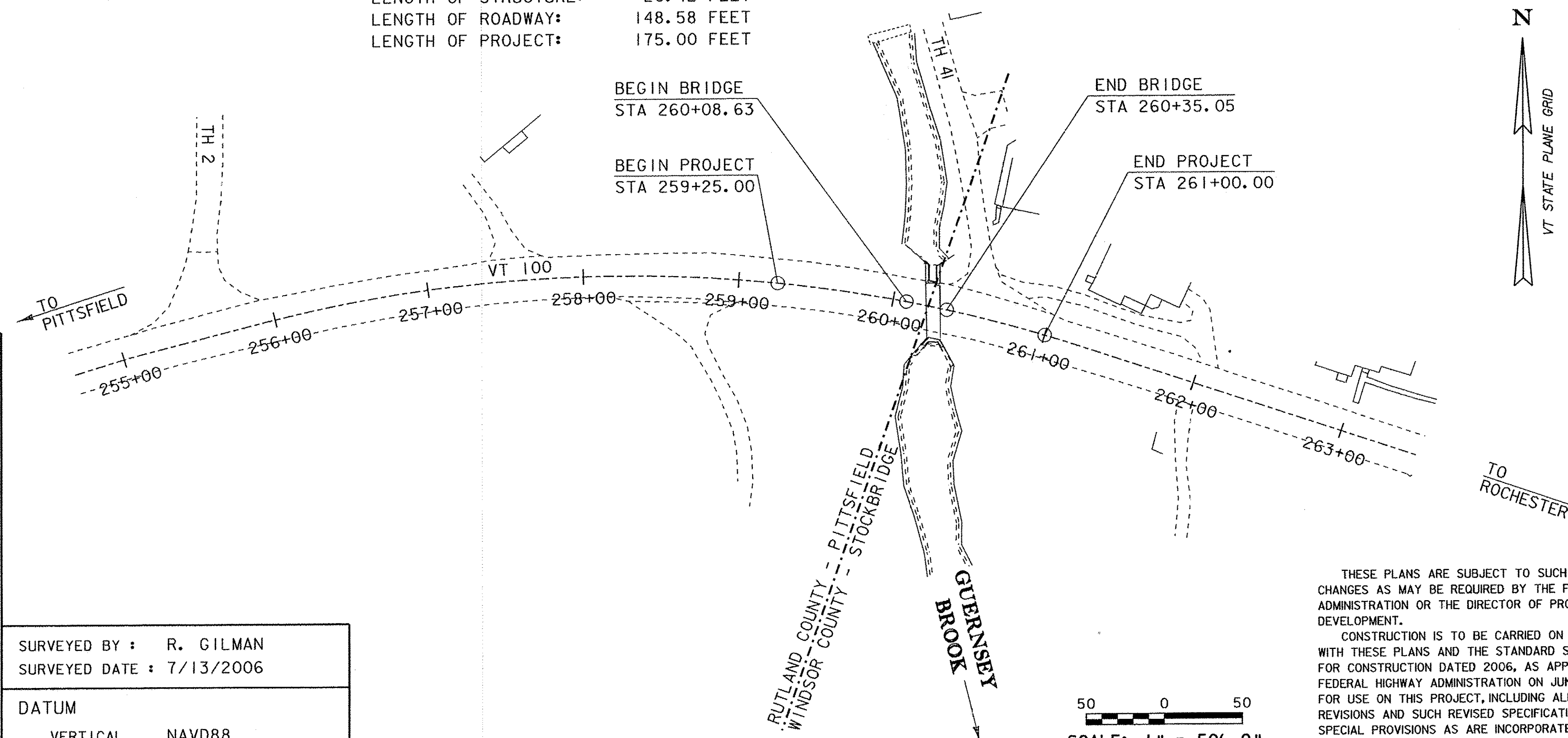
QUALITY ASSURANCE PROGRAM: LEVEL 2

### CONVENTIONAL SYMBOLS

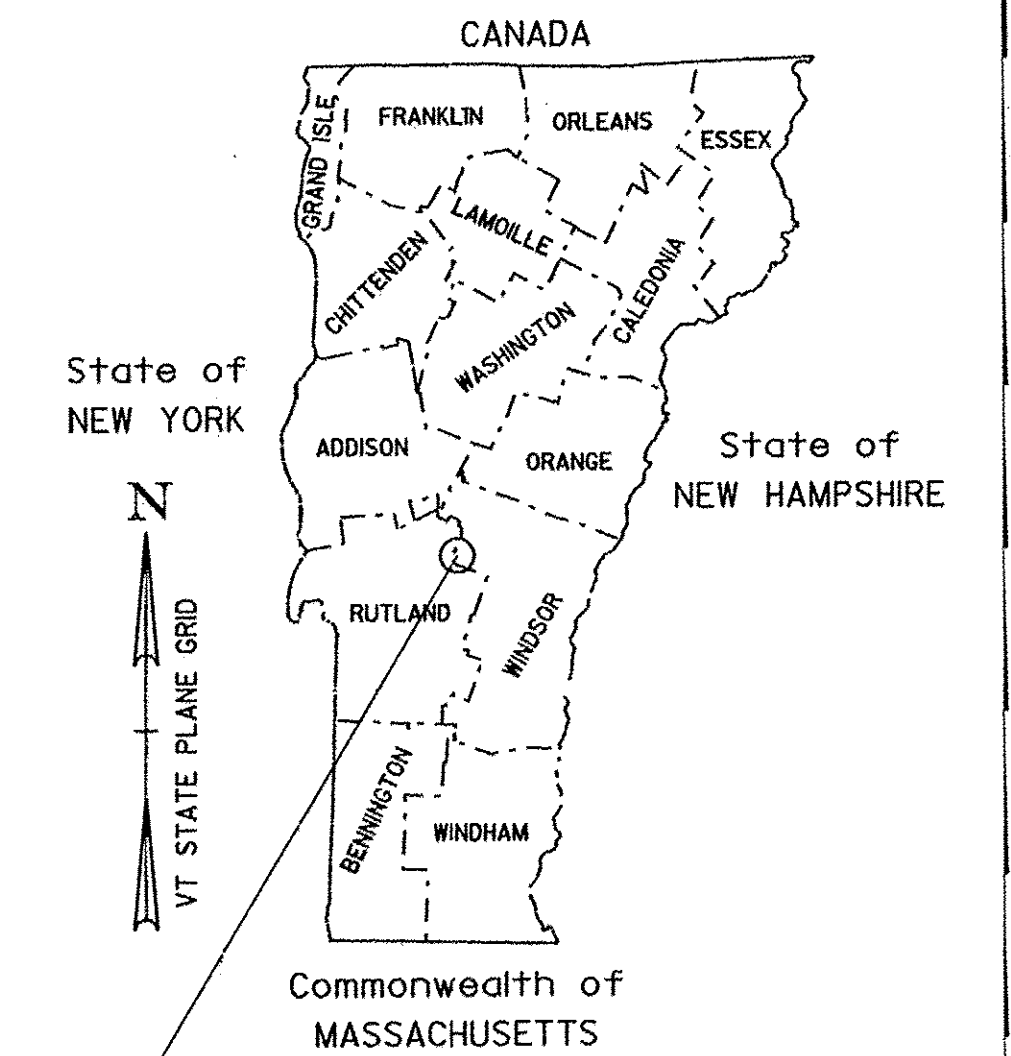
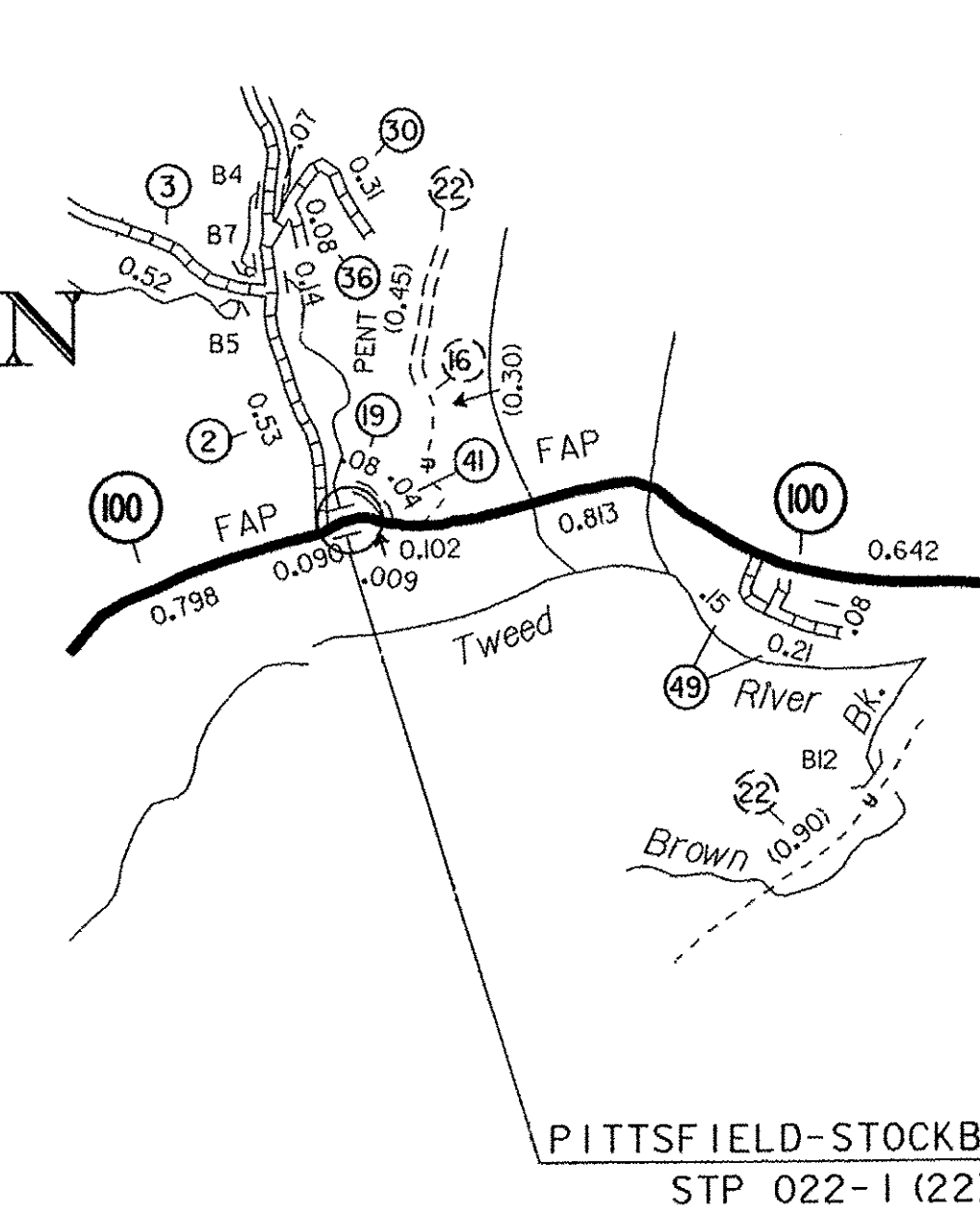
COUNTY LINE	
TOWN LINE	
LIMITS OF ACCESS	
POINT OF ACCESS	
FENCE LINE	
STONE WALL	
TRAVELED WAY	
GUARD RAIL	
RAILROAD	
SURVEY LINE	
CULVERT	
POWER POLE	
TELEPHONE POLE	
TREES	
CONTROL OF ACCESS	
PROPERTY LINE	
R.O.W. TAKING LINE	
SLOPE RIGHTS	
TOP OF CUT	
TOE OF SLOPE	

SURVEYED BY : R. GILMAN  
SURVEYED DATE : 7/13/2006

DATUM  
VERTICAL NAVD88  
HORIZONTAL NAD83 (96)



50 0 50  
SCALE: 1" = 50'-0"



THESE PLANS ARE SUBJECT TO SUCH ENGINEERING  
CHANGES AS MAY BE REQUIRED BY THE FEDERAL HIGHWAY  
ADMINISTRATION OR THE DIRECTOR OF PROGRAM  
DEVELOPMENT.  
CONSTRUCTION IS TO BE CARRIED ON IN ACCORDANCE  
WITH THESE PLANS AND THE STANDARD SPECIFICATIONS  
FOR CONSTRUCTION DATED 2006, AS APPROVED BY THE  
FEDERAL HIGHWAY ADMINISTRATION ON JUNE 15, 2006  
FOR USE ON THIS PROJECT, INCLUDING ALL SUBSEQUENT  
REVISIONS AND SUCH REVISED SPECIFICATIONS AND  
SPECIAL PROVISIONS AS ARE INCORPORATED IN THESE  
PLANS.

PLOTTED 02-SEP-2011

DIRECTOR OF PROGRAM DEVELOPMENT
APPROVED  DATE 9-6-11
PROJECT MANAGER : C. P. WILLIAMS
PROJECT NAME : PITTSFIELD-STOCKBRIDGE
PROJECT NUMBER : STP 022-1 (22) S
SHEET 1 OF 41 SHEETS