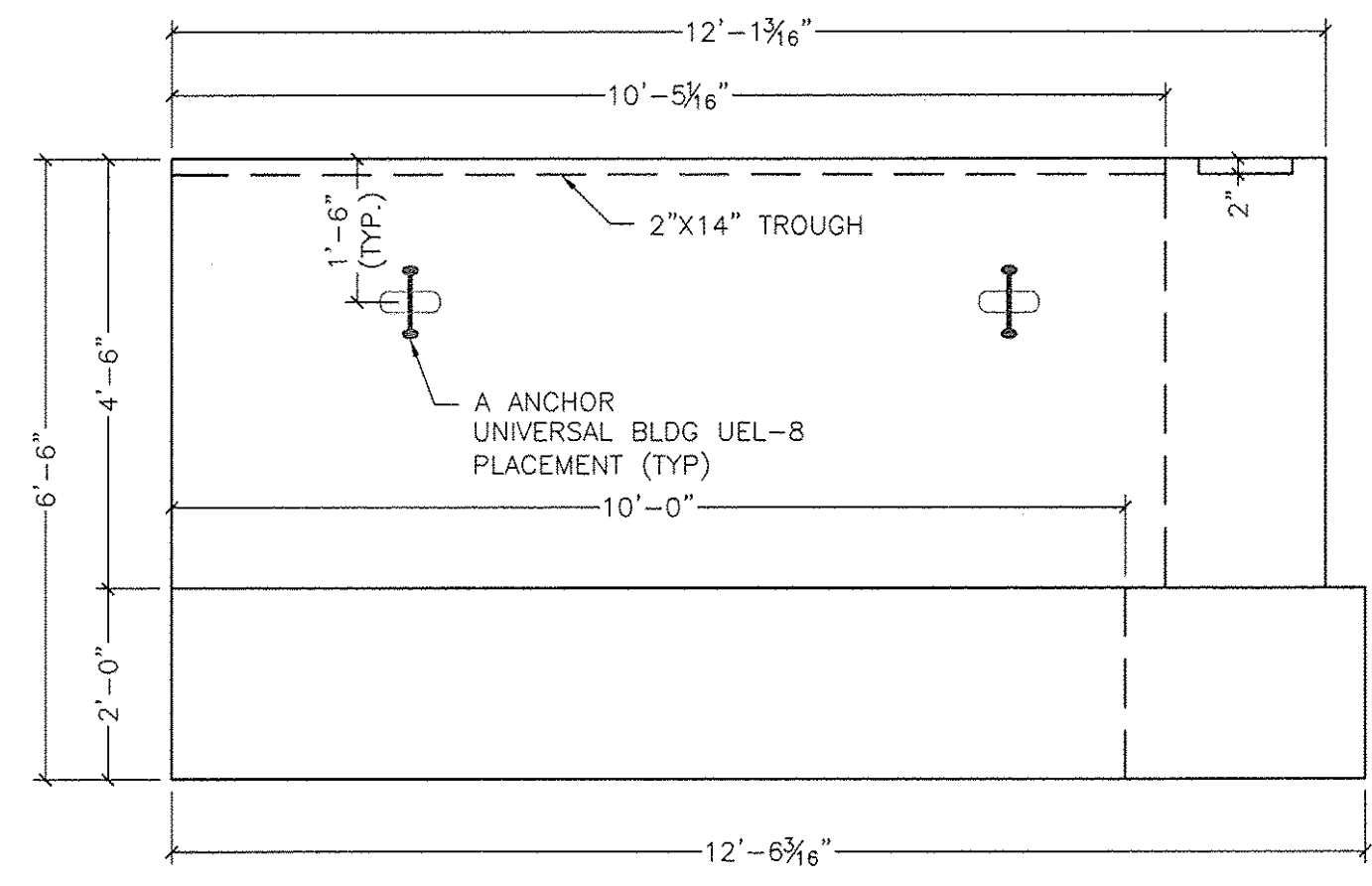
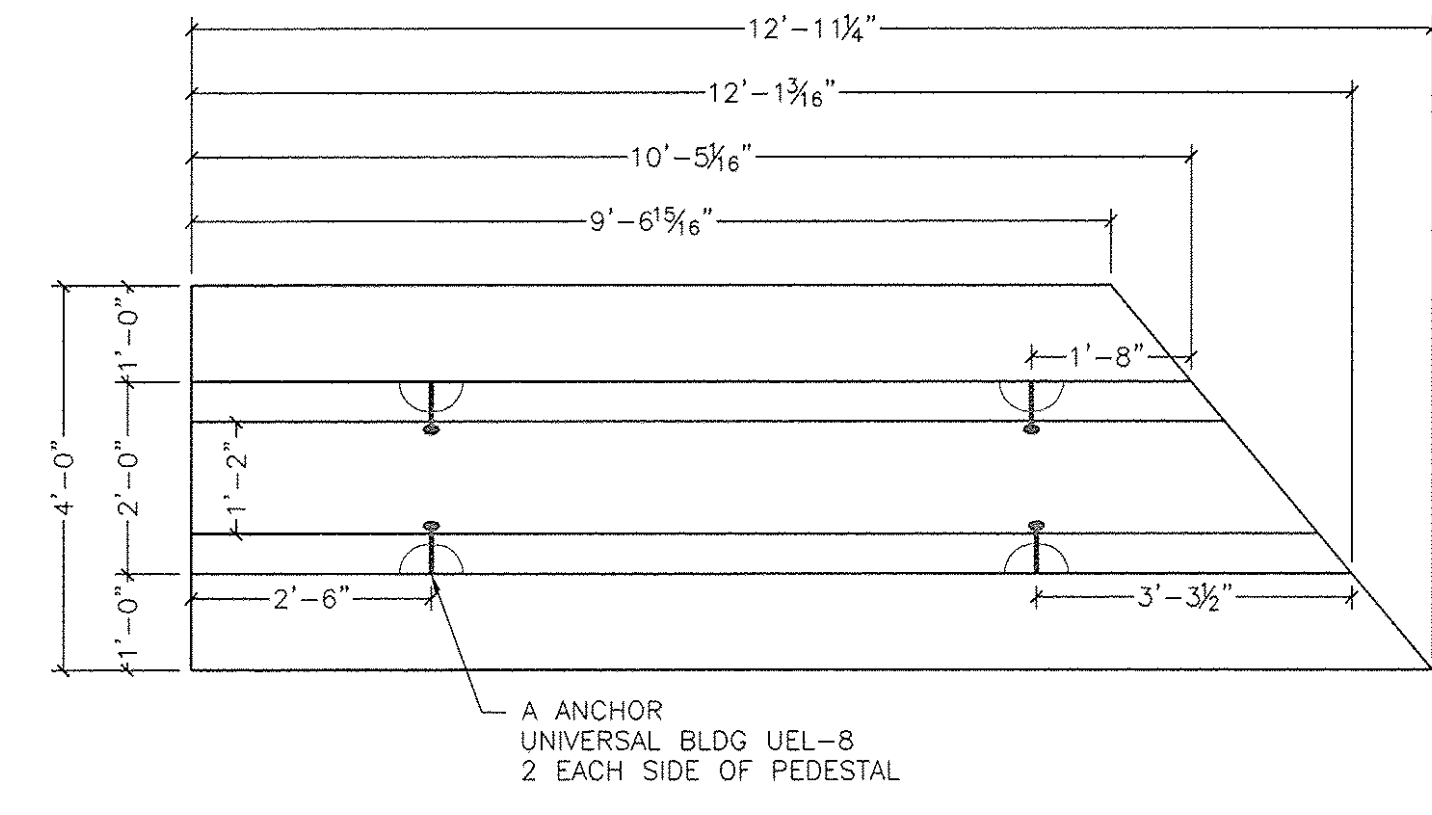


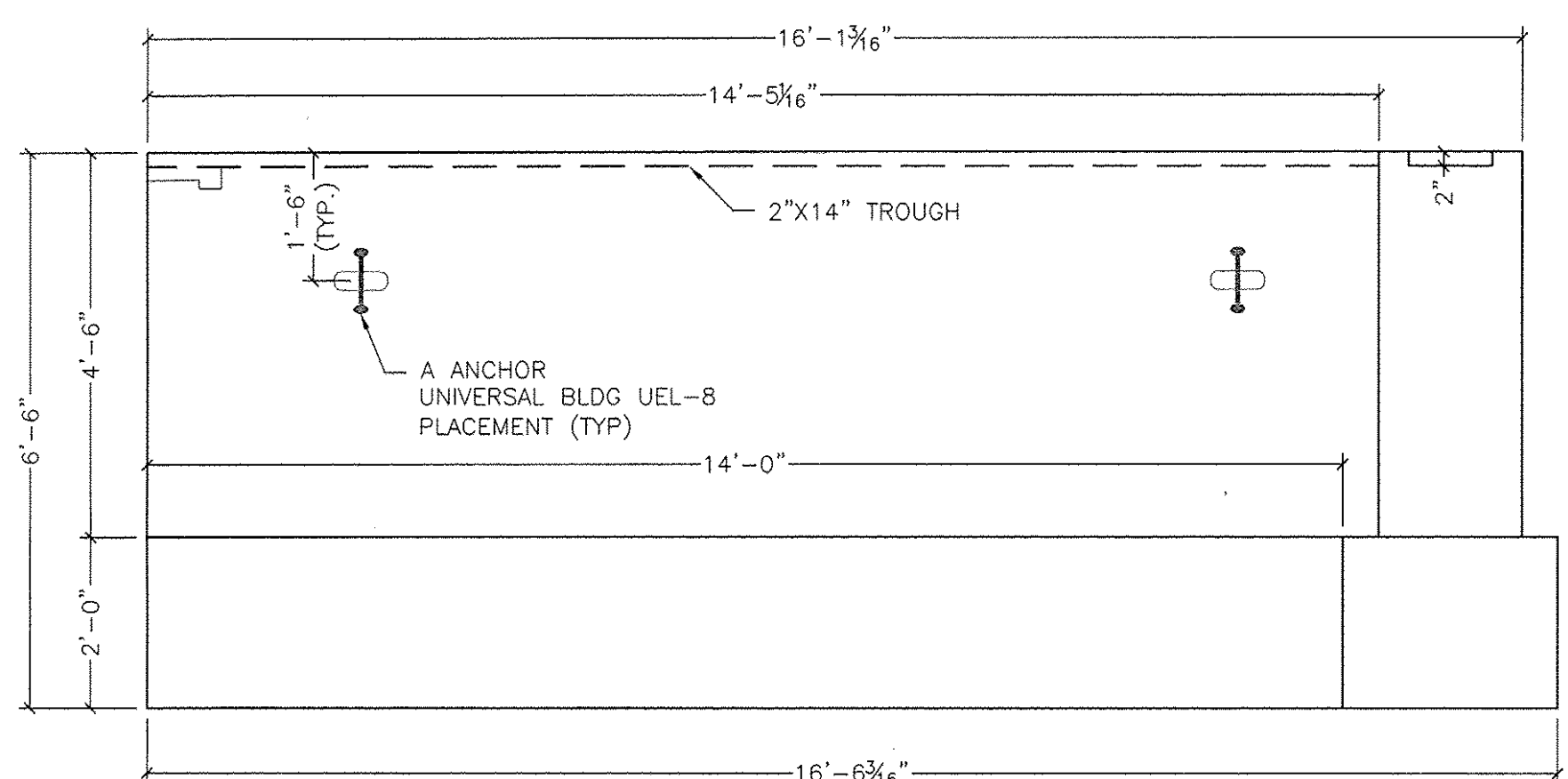
1 WINGWALL FOOTING CROSS SECTION
S6.0 1/2" = 1'-0"



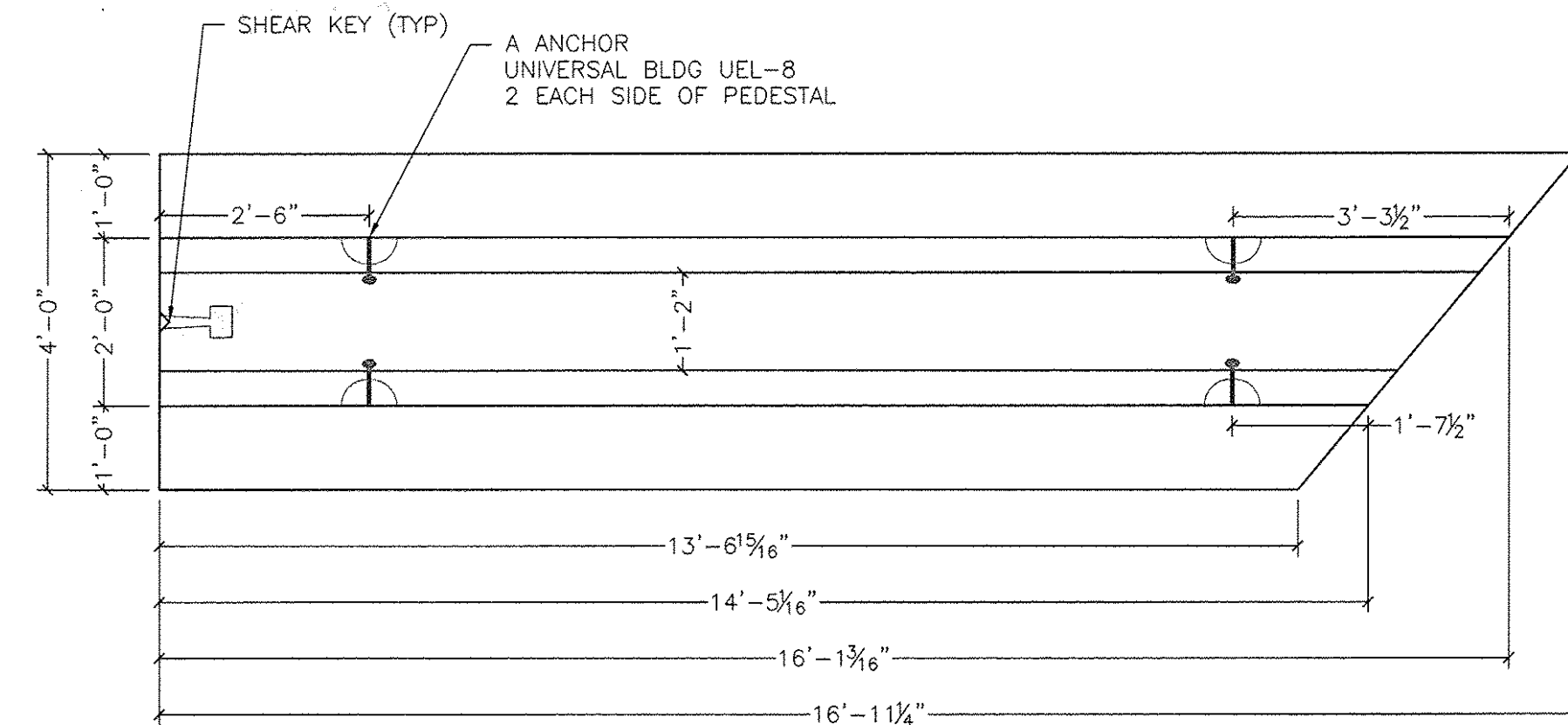
2A WINGWALL FOOTING (WF1) ELEVATION
S6.0 1/2" = 1'-0"



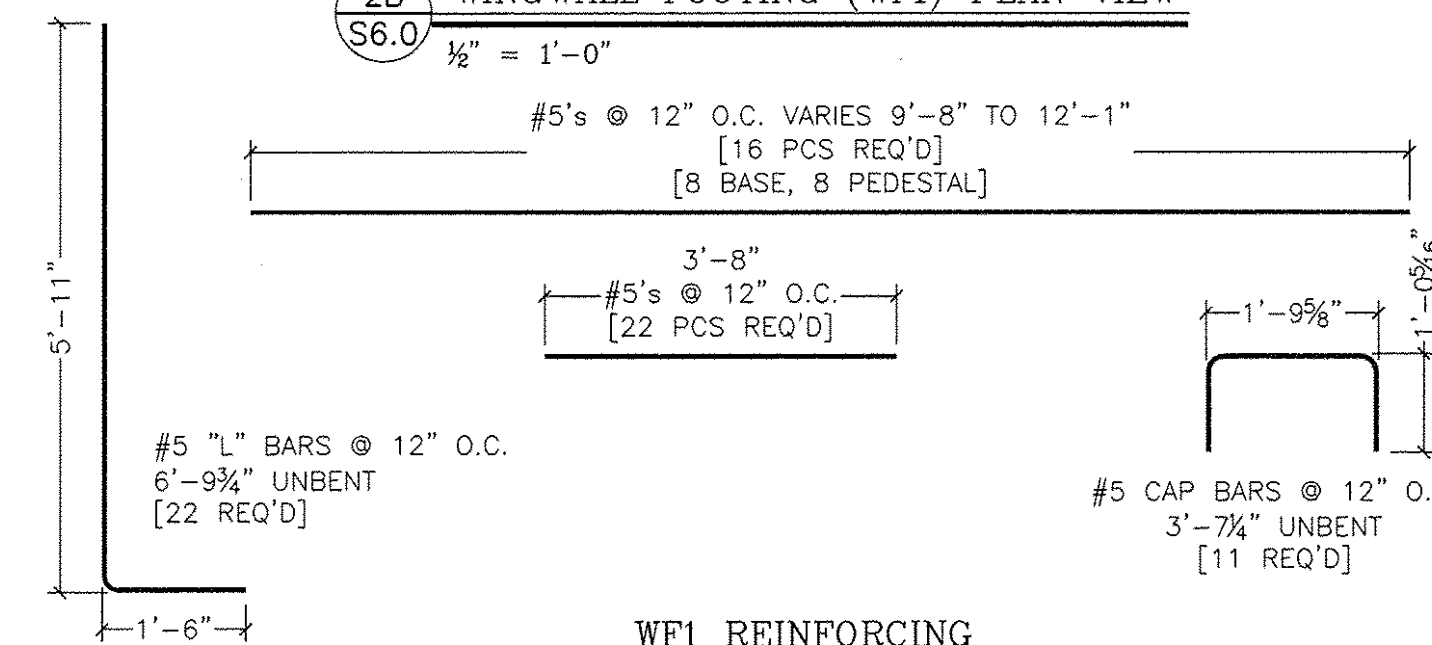
2B WINGWALL FOOTING (WF1) PLAN VIEW
S6.0 1/2" = 1'-0"



3A WINGWALL FOOTING (WF2) ELEVATION
S6.0 1/2" = 1'-0"



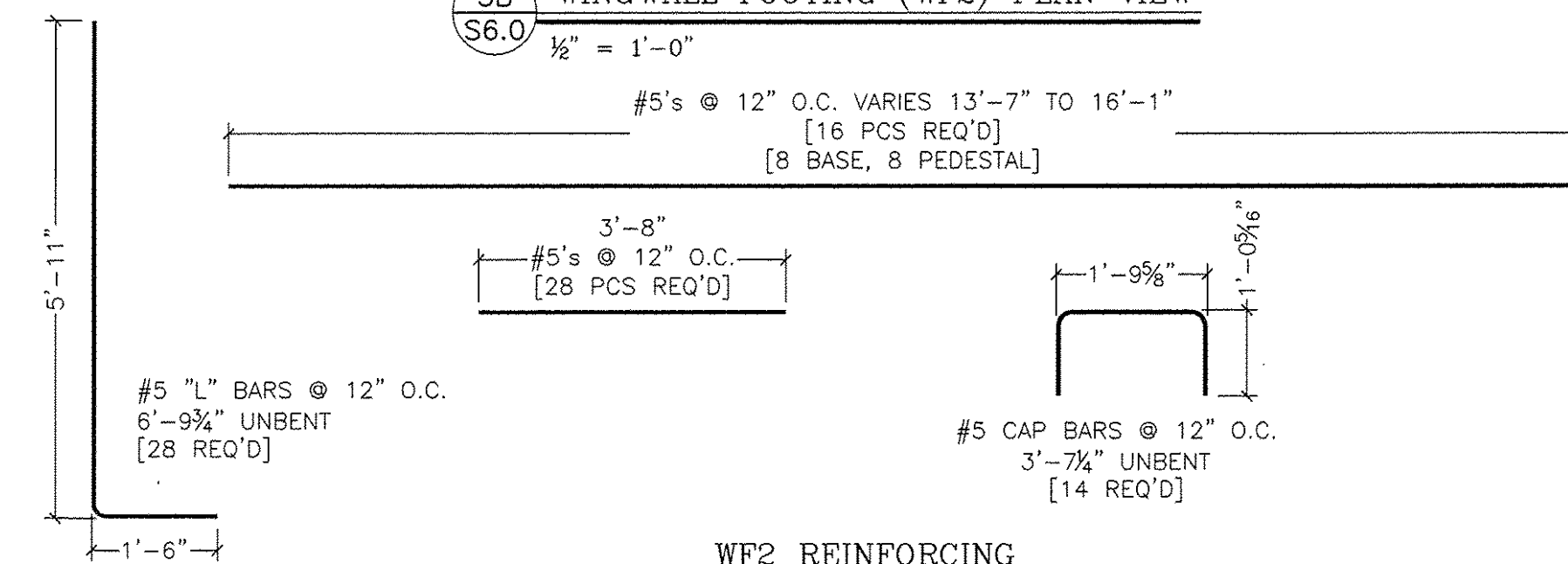
3B WINGWALL FOOTING (WF2) PLAN VIEW
S6.0 1/2" = 1'-0"



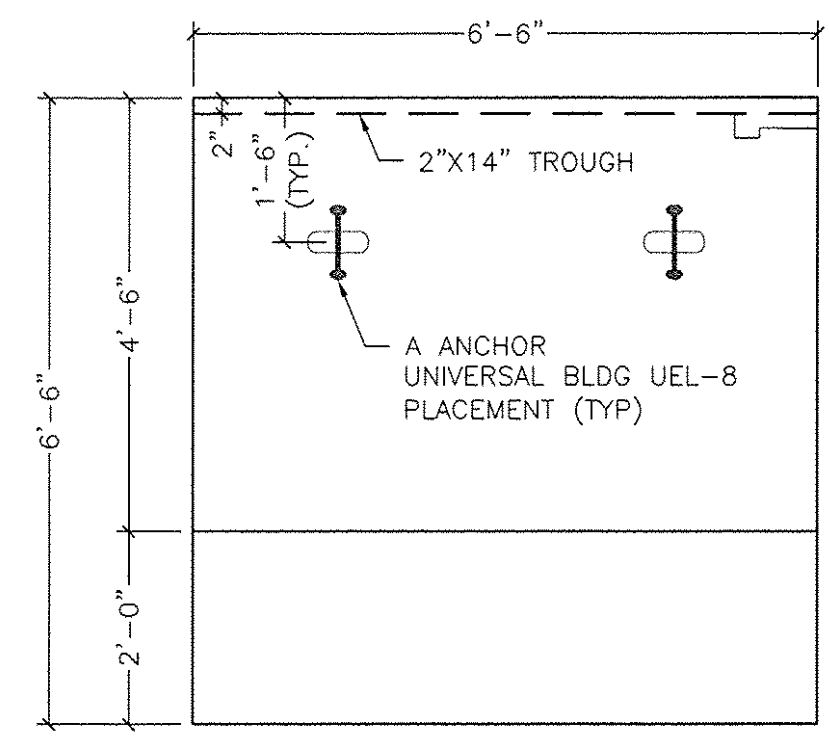
WF1 REINFORCING

TYPE "WF2"-2 REQ'D

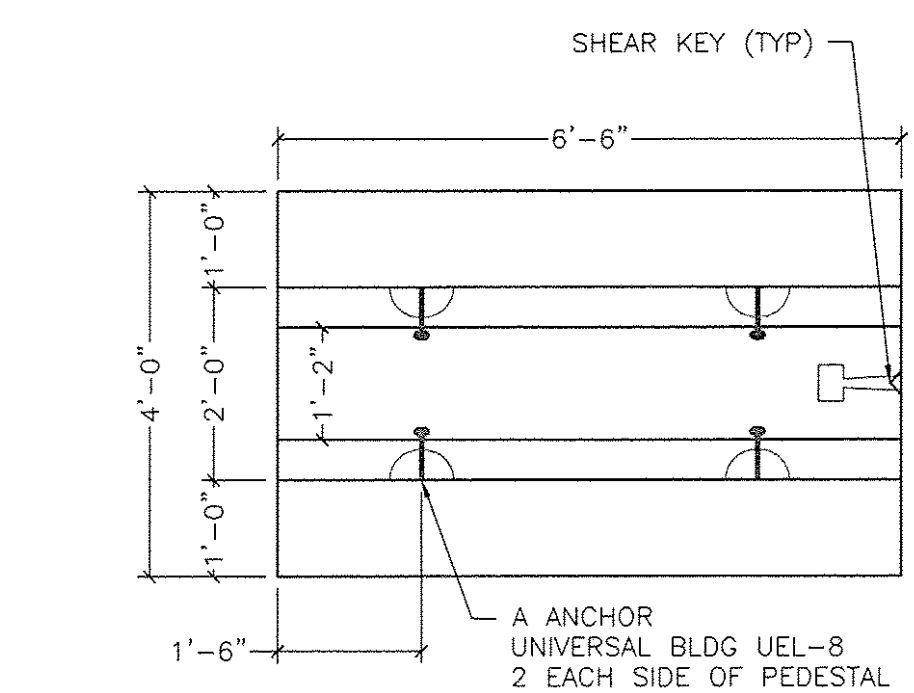
FOOTING- 4.52 CY
PEDESTAL- 4.98 CY
TOTAL WEIGHT: 39,900#



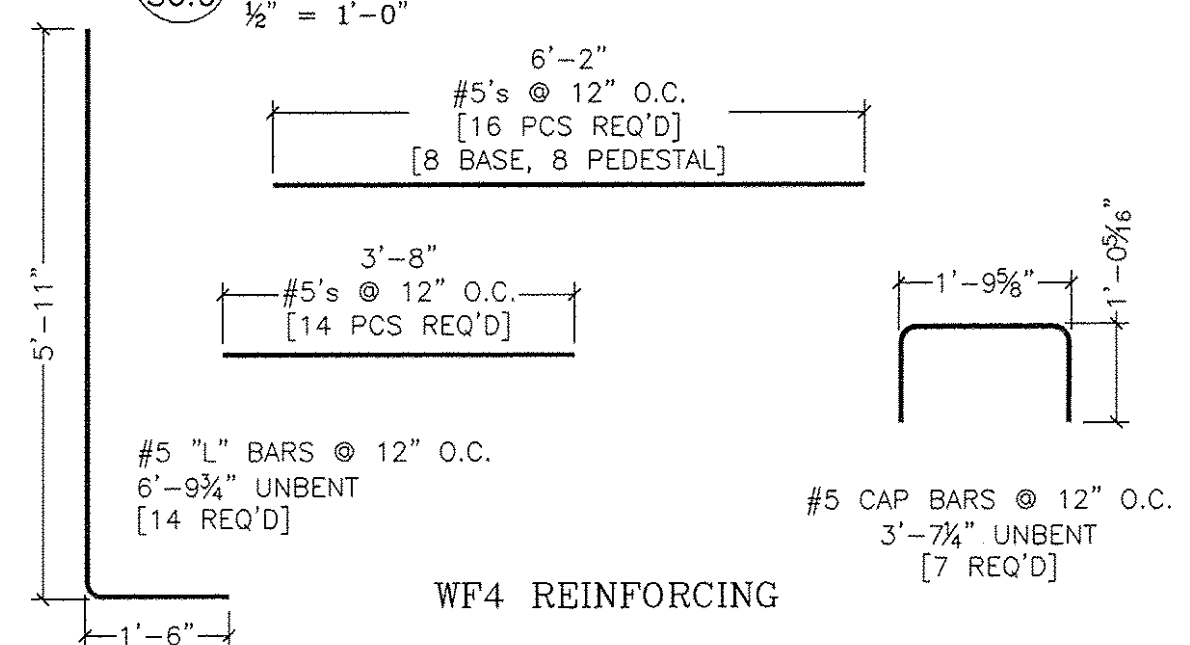
WF2 REINFORCING



4A WINGWALL FOOTING WF4 ELEVATION
S6.0 1/2" = 1'-0"



4B WINGWALL FOOTING WF4 PLAN VIEW
S6.0 1/2" = 1'-0"



WF4 REINFORCING

TYPE "WF4"-1 REQ'D

FOOTING- 1.90 CY
PEDESTAL- 1.66 CY
TOTAL WEIGHT: 14,950#

RECEIVED
MAY 5 12 00
APPROVED
DATE 5/12/09

04/25/09	Date	
Δ	No.	
	Revision	
	REUSED PER VDOT	
	TAF	By

WHITE MOUNTAIN PRECAST, LLC
173 BUXTON INDUSTRIAL DRIVE PO BOX 870
HENNIKER, NH 03242
PHONE: 603-428-3218
FAX: 603-428-1426

25' Span x 6'-6" Rise Rigid Frame Bridge
Rte 100 Bridge Replacement
Ludlow, VT

Prepared for:
Miller Construction, Inc.
P.O. Box 86 Rte 5
Windsor, VT 05087

DWG NO.
S6.0

Project No. 5166
Date: 2/10/2009
Wingwall Footings WWF1, WWF2 & WWF4
Scale: AS SHOWN
Checked by: TAF
Drawn by: PDH