

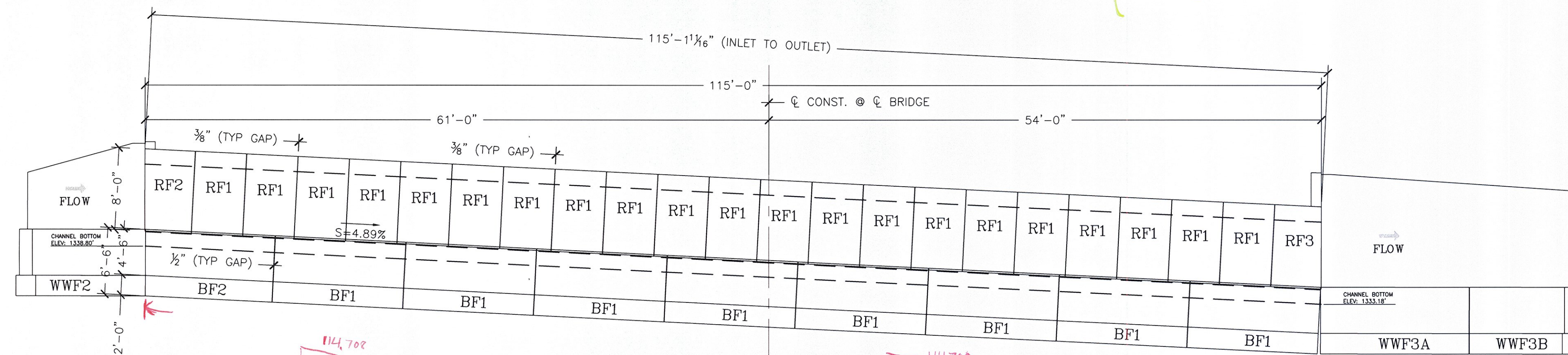
NOTE: THIS IS NOT A TRUE PLAN VIEW

1 PLAN VIEW PERPENDICULAR TO TOP DECK
S1.0 1/8" = 1'

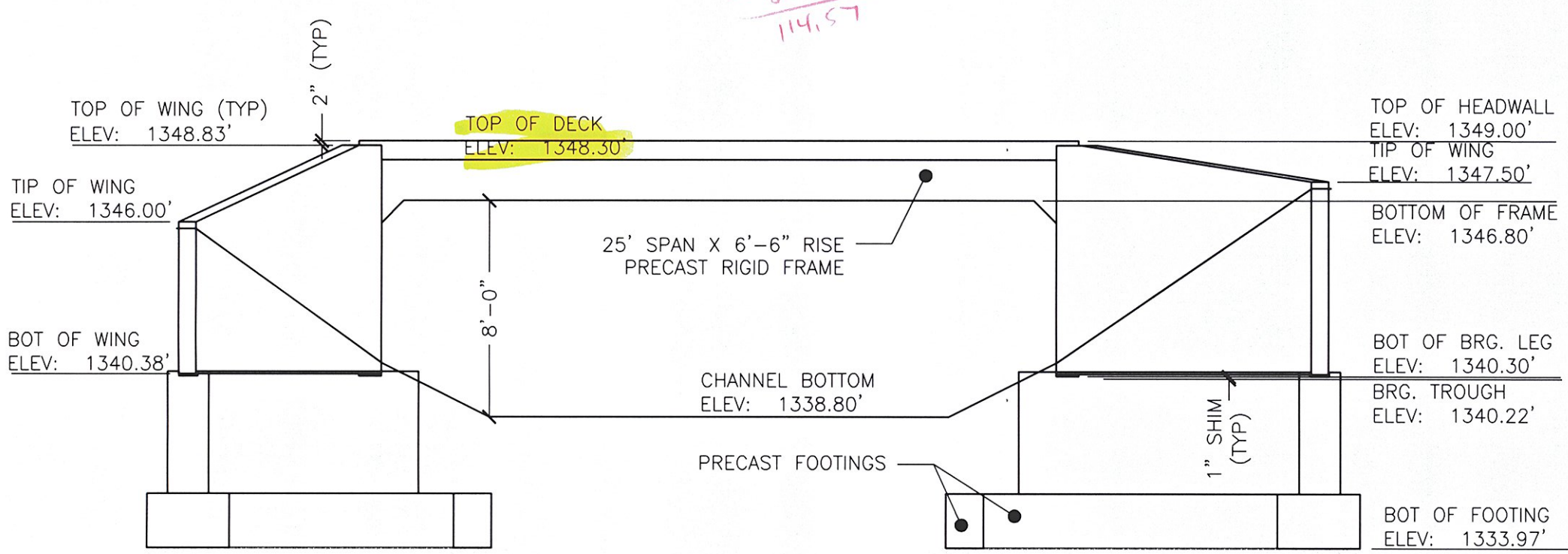
CONSTRUCTION PHASING NOTES:

- PHASE 1:
LEFT FOOTINGS-(1)BF2, (3)BF1, (1)BF3
RIGHT FOOTINGS-(1)BF2, (3)BF1
BRIDGE UNITS-(1)RF2, (9)RF1, (1)RF4
- PHASE 2:
LEFT FOOTINGS-(4)BF3
RIGHT FOOTINGS-(5)BF3
BRIDGE UNITS-(1)RF4, (1)RF1, (1)RF3

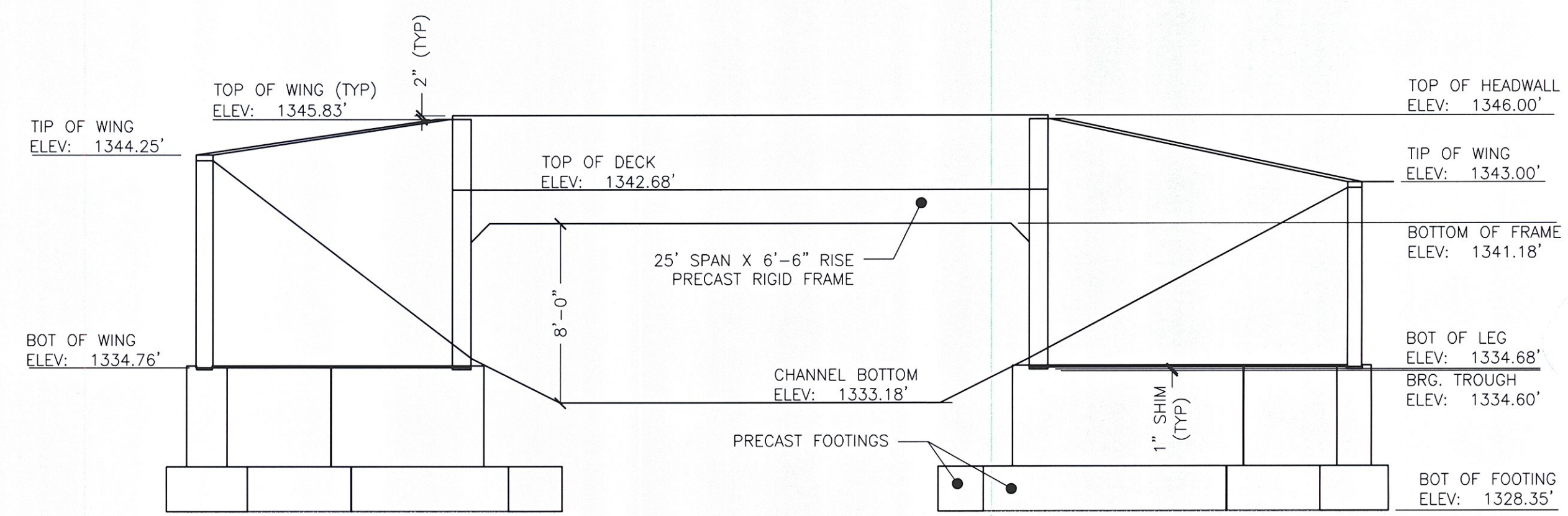
CONSTRUCTION SEQUENCE IS ALL ONE PHASE.



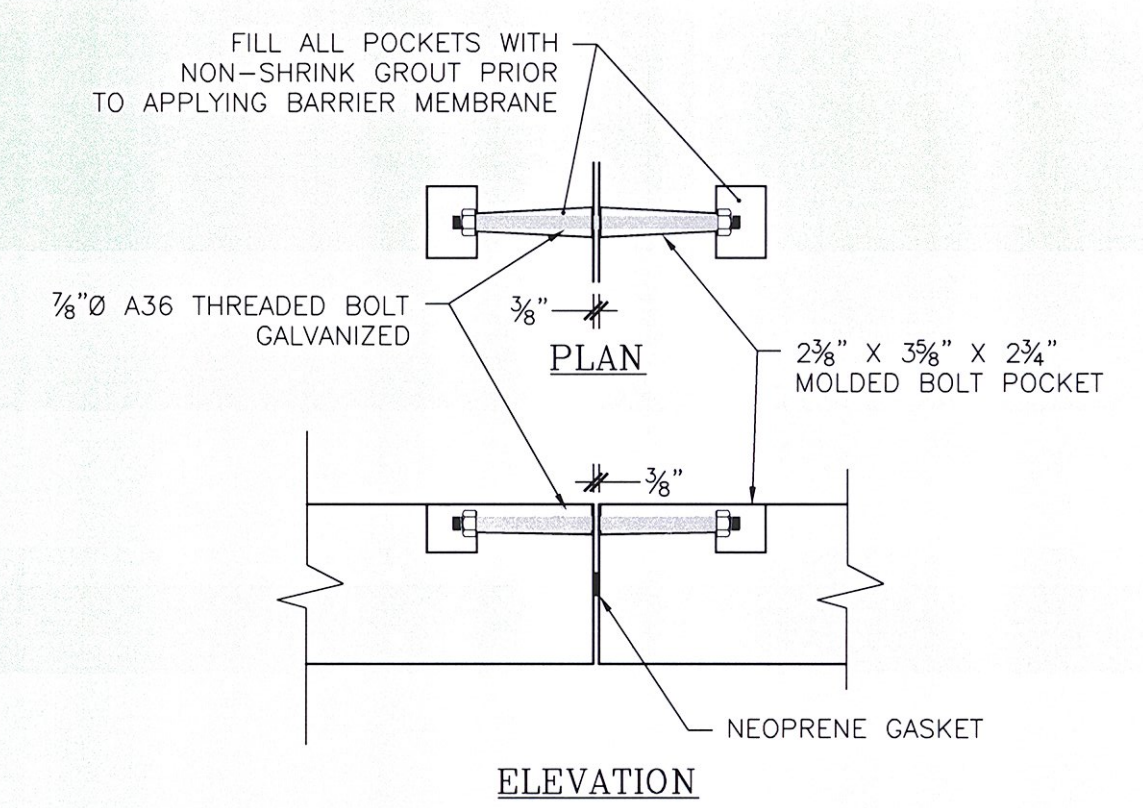
2 PROFILE VIEW
S1.0 1/8" = 1'



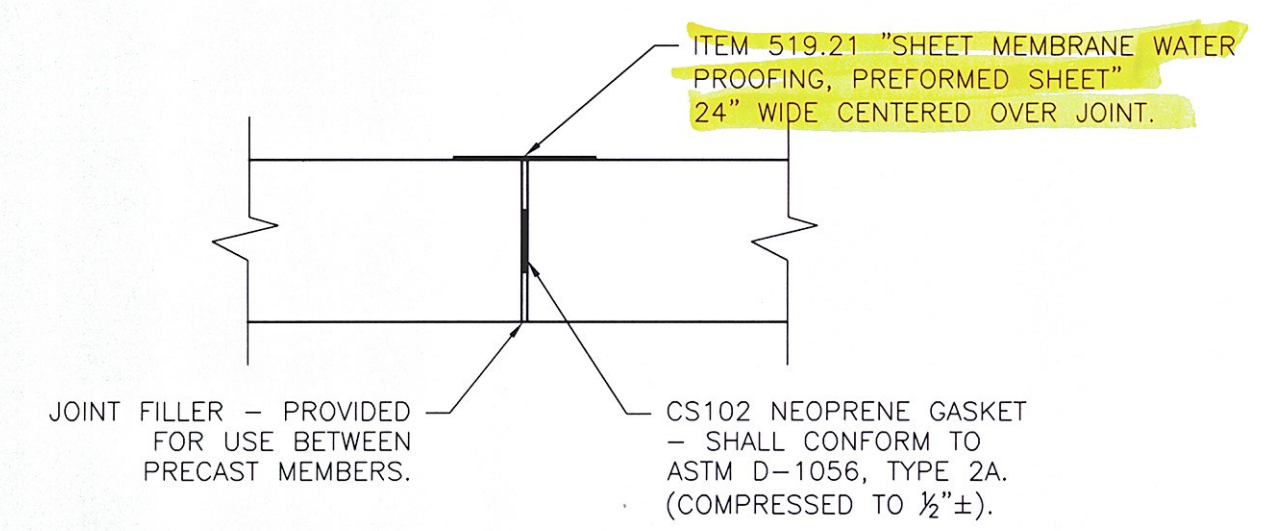
3 UPSTREAM ELEVATION
S1.0 3/16" = 1'-0"



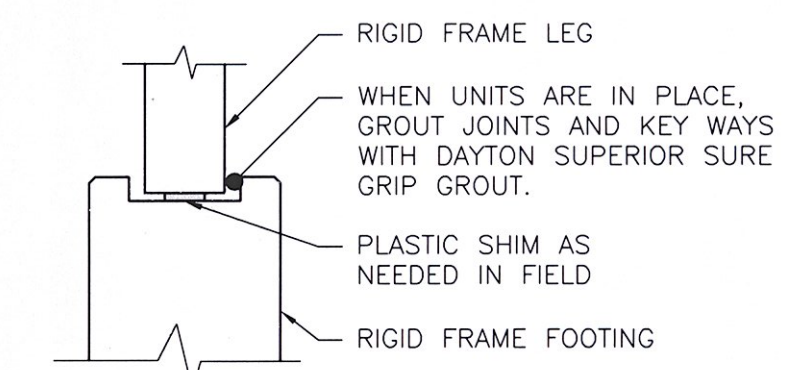
4 DOWNSTREAM ELEVATION
S1.0 3/16" = 1'-0"



5 BOLT POCKET CONNECTION DETAILS
S1.0 1" = 1'-0"



6 RIGID FRAME JOINT DETAIL
S1.0 1" = 1'-0"



7 UNIT SETTING DETAILS
S1.0 1/2" = 1'-0"

No.	Date	Revision	TAF	By
Δ	04/28/2009			

WHITE MOUNTAIN PRECAST, LLC
173 BUXTON INDUSTRIAL DRIVE, PO BOX 870
HENNIKER, NH 03242
PHONE: 603-428-3218
FAX: 603-428-7428

25' Span x 6'-6" Rise Rigid Frame Bridge
Rte 100 Bridge Replacement
Ludlow, VT

Project No. 5166
Date: 2/11/2009

Prepared for:
Miller Construction, Inc.
P.O. Box 86 Rte 5
Windsor, VT 05087

DWG NO.
S1.0

RECEIVED
OK'D BY [Signature] OK'D BY [Signature]
MAY 01 2009
RESUBMIT APPROVED [Signature]
BY CPW DATE 5/2/09

Tranah changed from 2" to 3"
Flow as noted
No bar 1/2"