

SPEED LIMIT 50

BROOKS ROAD TH 41

STOP

SPEED LIMIT 35

LEGAL LOAD LIMIT 24,000 POUNDS

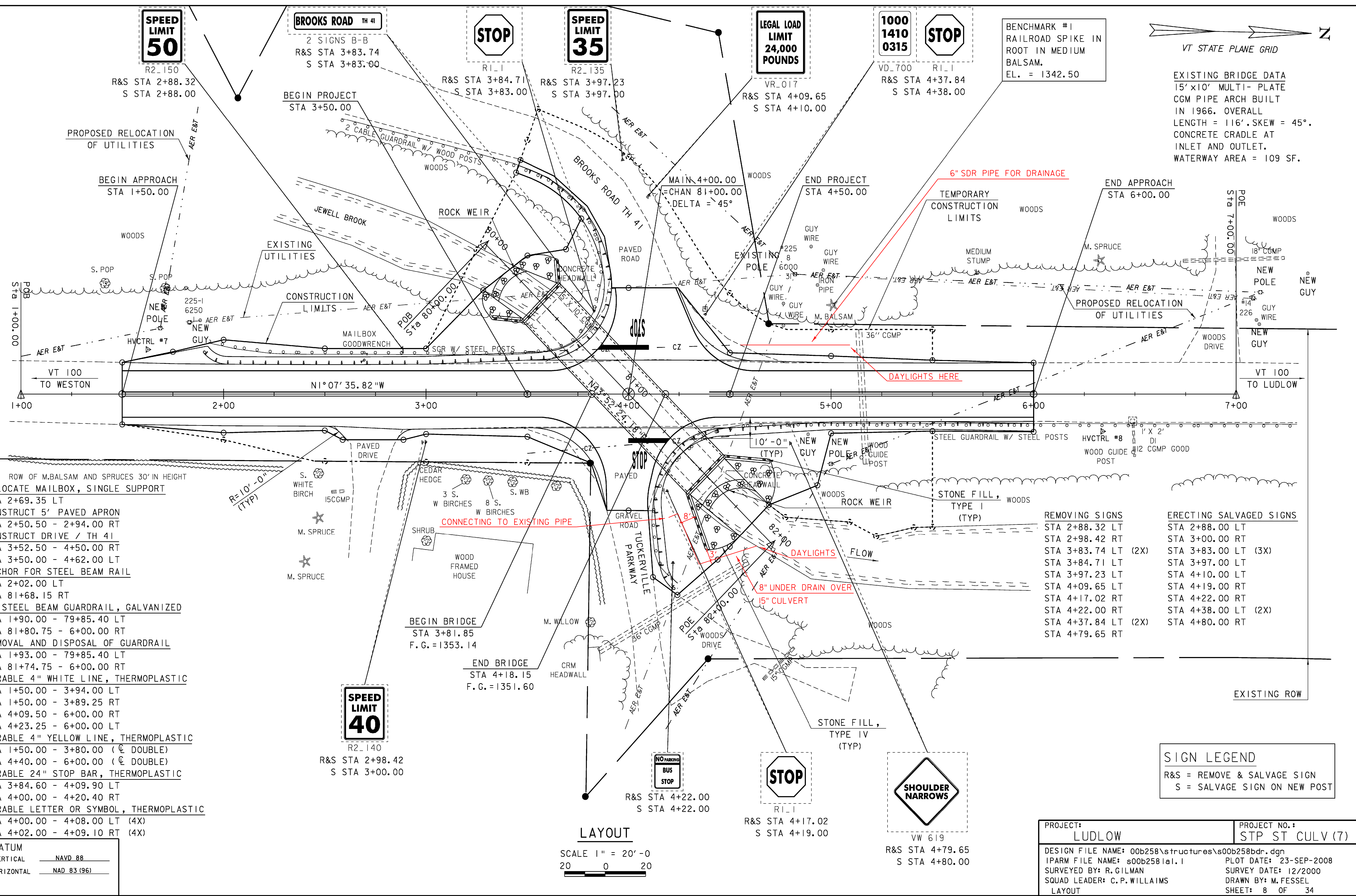
1000 1410 0315

STOP

BENCHMARK #1
RAILROAD SPIKE IN
ROOT IN MEDIUM
BALSAM.
EL. = 1342.50



EXISTING BRIDGE DATA
15' x 10' MULTI- PLATE
CGM PIPE ARCH BUILT
IN 1966. OVERALL
LENGTH = 116'. SKEW = 45°.
CONCRETE CRADLE AT
INLET AND OUTLET.
WATERWAY AREA = 109 SF.



- ROW OF M.BALSAM AND SPRUCES 30' IN HEIGHT
- RELOCATE MAILBOX, SINGLE SUPPORT STA 2+69.35 LT
- CONSTRUCT 5' PAVED APRON STA 2+50.50 - 2+94.00 RT
- CONSTRUCT DRIVE / TH 41 STA 3+52.50 - 4+50.00 RT
- STA 3+50.00 - 4+62.00 LT
- ANCHOR FOR STEEL BEAM RAIL STA 2+02.00 LT
- STA 81+68.15 RT
- HD STEEL BEAM GUARDRAIL, GALVANIZED STA 1+90.00 - 79+85.40 LT
- STA 81+80.75 - 6+00.00 RT
- REMOVAL AND DISPOSAL OF GUARDRAIL STA 1+93.00 - 79+85.40 LT
- STA 81+74.75 - 6+00.00 RT
- DURABLE 4" WHITE LINE, THERMOPLASTIC STA 1+50.00 - 3+94.00 LT
- STA 1+50.00 - 3+89.25 RT
- STA 4+09.50 - 6+00.00 RT
- STA 4+23.25 - 6+00.00 LT
- DURABLE 4" YELLOW LINE, THERMOPLASTIC STA 1+50.00 - 3+80.00 (C DOUBLE)
- STA 4+40.00 - 6+00.00 (C DOUBLE)
- DURABLE 24" STOP BAR, THERMOPLASTIC STA 3+84.60 - 4+09.90 LT
- STA 4+00.00 - 4+20.40 RT
- DURABLE LETTER OR SYMBOL, THERMOPLASTIC STA 4+00.00 - 4+08.00 LT (4X)
- STA 4+02.00 - 4+09.10 RT (4X)

- | | |
|---------------------|-------------------------|
| REMOVING SIGNS | ERECTING SALVAGED SIGNS |
| STA 2+88.32 LT | STA 2+88.00 LT |
| STA 2+98.42 RT | STA 3+00.00 RT |
| STA 3+83.74 LT (2X) | STA 3+83.00 LT (3X) |
| STA 3+84.71 LT | STA 3+97.00 LT |
| STA 3+97.23 LT | STA 4+10.00 LT |
| STA 4+09.65 LT | STA 4+19.00 RT |
| STA 4+17.02 RT | STA 4+22.00 RT |
| STA 4+22.00 RT | STA 4+38.00 LT (2X) |
| STA 4+37.84 LT (2X) | STA 4+80.00 RT |
| STA 4+79.65 RT | |

DATUM
VERTICAL NAVD 88
HORIZONTAL NAD 83 (96)

LAYOUT
SCALE 1" = 20'-0"
20 0 20

PROJECT: LUDLOW	PROJECT NO. #: STP ST CULV (7)
DESIGN FILE NAME: 00b258\structures\00b258bdr.dgn	PLOT DATE: 23-SEP-2008
IPARM FILE NAME: s00b2581a1.1	SURVEY DATE: 12/2000
SURVEYED BY: R.GILMAN	DRAWN BY: M.FESSEL
SQUAD LEADER: C.P. WILLIAMS	SHEET: 8 OF 34
LAYOUT	