

GPS CONTROL POINTS

HVCTRL # 1

STANDARD DISK STAMPED  
TERRIBLE AZ MK

N = 310879.38  
E = 1580428.75  
ELEV. = 1710.76

GENERAL LOCATION, LUDLOW, VT. TO REACH FROM THE MOST SOUTHERLY INTERSECTION OF VT ROUTES 100 AND 103, IN LUDLOW VILLAGE, GO SOUTH ALONG VT ROUTE 100 FOR 3.2 MI (5.1 KM) TO THE Y-INTERSECTION OF ANDOVER ROAD LEFT. BEAR LEFT AND GO SOUTHWEST ALONG ANDOVER ROAD FOR ABOUT 65 M (213.3 FT) TO THE SITE OF THE MARK ON THE RIGHT. IT IS JUST SOUTHWEST OF A GRASS TRIANGLE FORMED BY THE INTERSECTION. THE MARK IS SET 2 CM BELOW GROUND SURFACE IN THE TOP OF A 30 CM DIAMETER CONCRETE MONUMENT POURED 1.3 M (4.3 FT) DEEP. IT IS 5.5 M (18.0 FT) NORTHWEST OF AND ABOUT 0.4 M (1.3 FT) LOWER THAN THE CENTERLINE OF ANDOVER ROAD, 23.2 M (76.1 FT) SOUTHEAST OF THE CENTERLINE OF ROUTE 100, 19.1 M (62.7 FT) NORTH OF POLE NO 195A/6600/1, AND 0.3 M (1.0 FT) NORTHEAST OF A FIBERGLASS WITNESS POST.

HVCTRL # 2

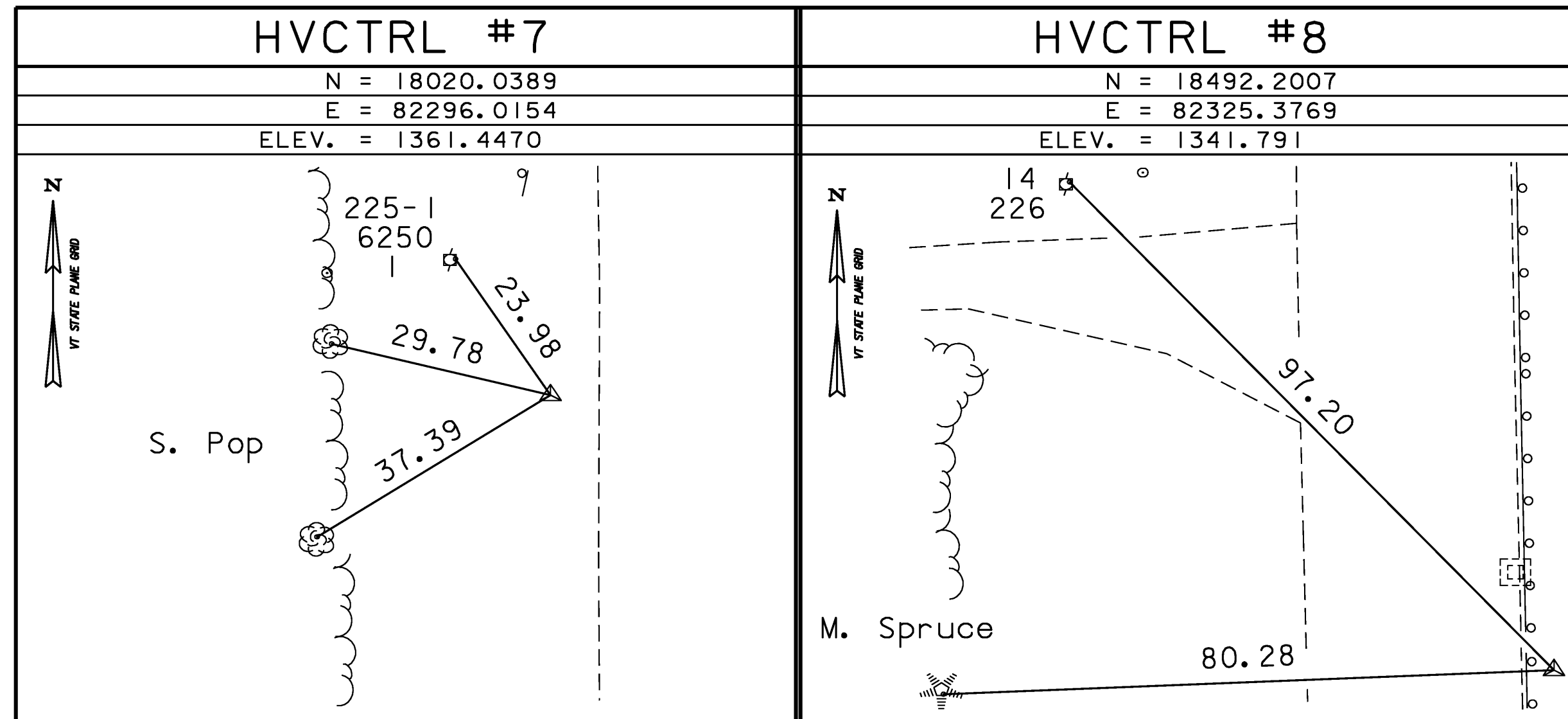
STANDARD DISK STAMPED  
TERRIBLE

N = 314132.21  
E = 1581443.86  
ELEV. = 1653.08

GENERAL LOCATION, LUDLOW, VT. TO REACH FROM THE MOST SOUTHERLY INTERSECTION OF VT ROUTES 100 AND 103, IN LUDLOW VILLAGE, GO SOUTH ALONG VT ROUTE 100 FOR 2.6 MI (4.2 KM) TO THE INTERSECTION OF SITE NO 1 ROAD RIGHT. CONTINUE STRAIGHT AHEAD AND GO SOUTHWEST ALONG VT ROUTE 100 FOR 0.1 MI (0.2 KM) TO THE SITE OF THE MARK ON THE RIGHT, BEHIND A GUARD RAIL. THE MARK IS SET FLUSH WITH GROUND SURFACE IN THE TOP OF A 30 CM DIAMETER CONCRETE MONUMENT POURED 1.3 M (4.3 FT) DEEP. IT IS 5.5 M (18.0 FT) NORTHWEST OF AND ABOUT 0.1 M (0.3 FT) LOWER THAN THE CENTERLINE OF VT ROUTE 100, 15.4 M (50.5 FT) EAST OF POLE NO 206/77, 24.2 M (79.4 FT) NORTH NORTHEAST OF THE NORTHWEST (OUTLET) END OF A 45 CM DIAMETER METAL CULVERT, 0.5 M (1.6 FT) NORTHWEST OF A STEEL BEAM GUARD RAIL, AND 0.5 M (1.6 FT) SOUTHWEST OF A FIBERGLASS WITNESS POST.

\*TO ALLOW THE STATE PLANE COORDINATES TO FIT THE AGENCY DESIGN PLANE, SUBTRACT 300,000 FROM THE NORTHING AND SUBTRACT 1,500,000 FROM THE EASTING.  
\* DESCRIPTION PROVIDED BY VERMONT AGENCY OF TRANSPORTATION GEODETIC SURVEY UNIT

TRAVERSE TIES



12/21/00 • MAIN TRAVERSE COMPLETED  
By R. Gilman (P.C.), R. Bullock, & G. Wilson

ALIGNMENT TIES

• ALIGNMENT STAKED

DATUM	
VERTICAL	NAVD 88
HORIZONTAL	NAD 83/96
ADJUSTMENT	COMPASS

PROJECT NAME:	Ludlow
PROJECT NUMBER:	ST CULV(7)
FILE NAME:	00b258/xb258+1.dgn
PROJECT LEADER:	C.P. WILLIAMS
DESIGNED BY:	E.L.RUSTAY
GPS CONTROL AND TRAVERSE TIES	
PLOT DATE:	11-SEP-2008
DRAWN BY:	R. Bullock
CHECKED BY:	R.S.YOUNG
SHEET	5 OF 34