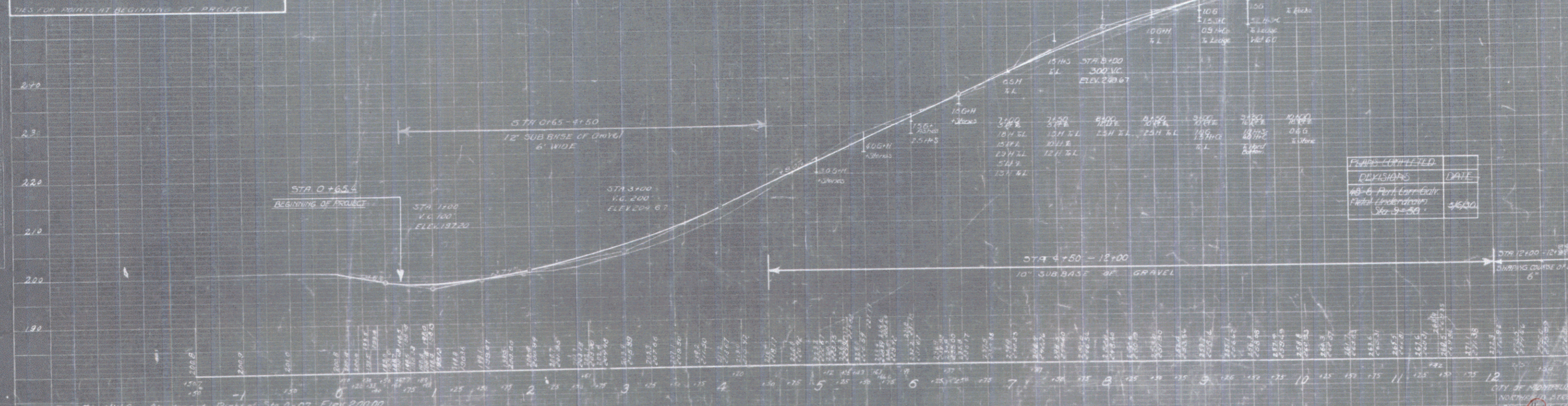
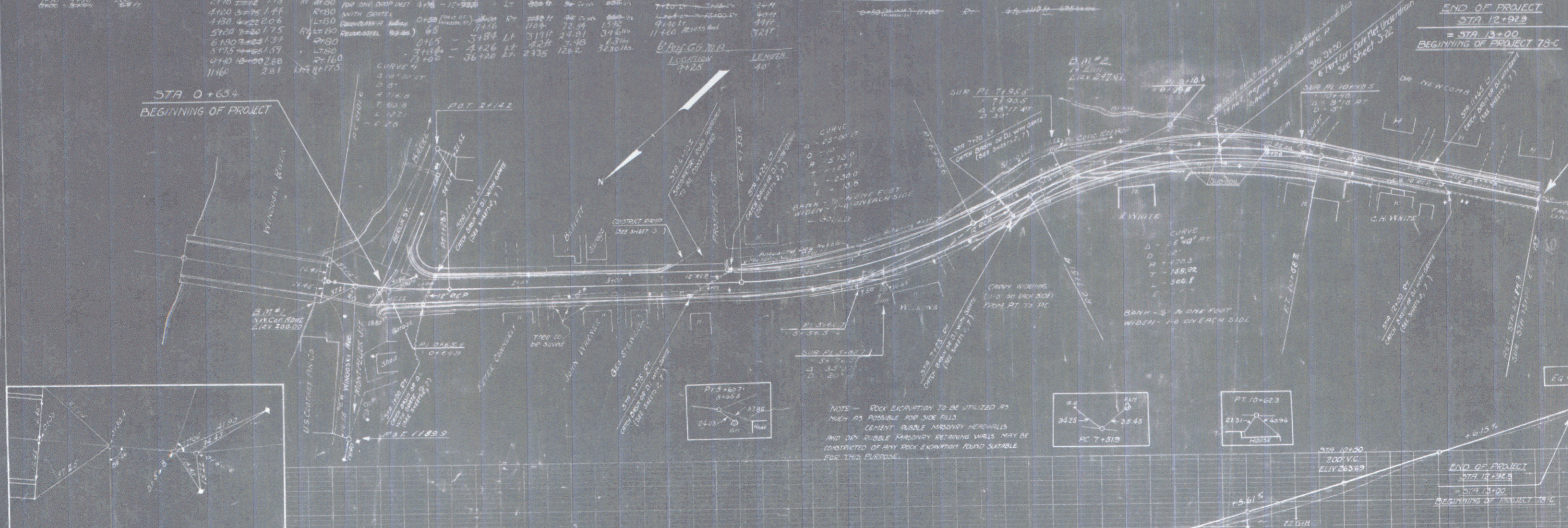




CABLE GUARD RAIL REQUIRED		CATCH DITCHING OR DRAIN INSETS WHEN CATCHES REQUIRED		2" O CONCRETE GUTTER WITH 6" DRAIN REQUIRED		12" REINFORCED CONCRETE CURB REQUIRED		ONE COURSE CEMENT CONCRETE SIDEWALK REQUIRED		DRY RUBBLE MASONRY WALL REQUIRED		NO. 6 REINFORCED CONCRETE PIPE REQUIRED		
STATIONS	LEFT	RIGHT	LOCATION	LT	RT	LOCATION	LT	RT	LOCATION	LEFT	RIGHT	LOCATION	LEFT	RIGHT
2+00	3+45	3+45	1+00	1+00	1+00	1+00	1+00	1+00	1+00	1+00	1+00	1+00	1+00	1+00



PT #4 NW Corner Apartment Right of Sta 0+07 Elev 200.00  
 PT #2 18' Eim. Left of Sta 0+15 Elev 207.51

REVISIONS	DATE
1. 10' 18' 1950	10/18/50

GUIDE POSTS OF WOOD REQUIRED		WOOD GUARD RAIL REQUIRED	
CHWERT STATION	LEFT RIGHT	CHWERT STATION	LEFT RIGHT
20+25	- 1	14+13	- 24'
22+40	- 1		

WOOD GUARD RAIL REQUIRED		CABLE GUARD RAIL REQUIRED	
STATIONS	LEFT RIGHT	STATIONS	LEFT RIGHT
17+18 - 18+38	-	120'	

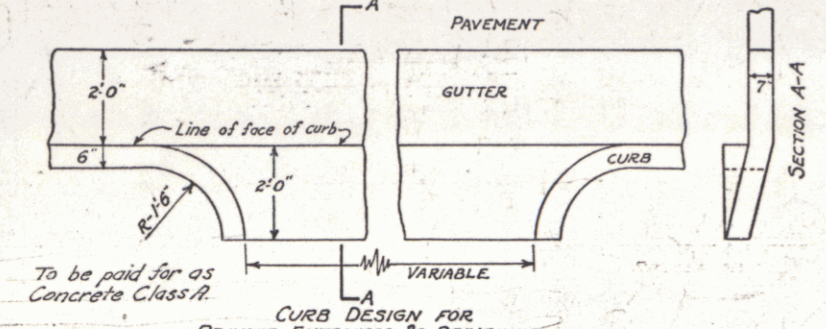
NEW REIN. CONCRETE PIPE CULVERTS REQUIRED					
STA.	DIAM.	LENG.	CONC. C.	REIN. STEEL	D.I. GRATED
14+13	30"	43'	3.2 cu yds.	125 lbs.	-
17+30	18"	32'	1.4 cu yds.	116 lbs.	1 1
20+25	12"	40'	2.8 cu yds.	198 lbs.	2 2
22+70	15"	32'	3.3 cu yds.	174 lbs.	1 1

CONCRETE CURB AND GUTTER REQUIRED			
STATIONS	LONG.	WIDTH	CURB HGT.
13+00 - 24+00	L	2.0'	6"

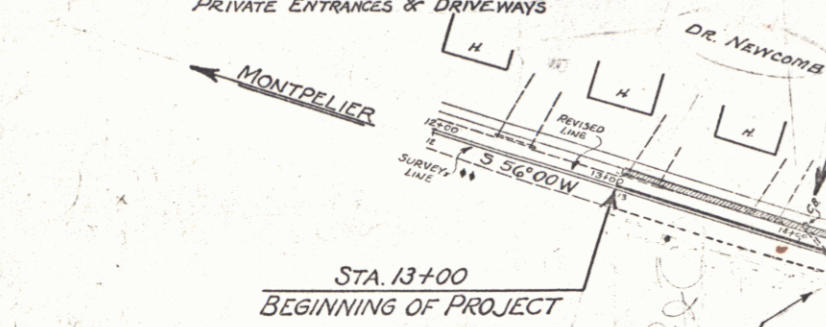
CATCH BASINS REQUIRED		
STATION	R.O.R.	TYPE
14+00	RT	LEFT BRK

DRIVEWAY CULVERT REPAIRS REQUIRED			
STATION	R.O.R.	CEMENT	RUBBLE MASONRY
19+70	RT	2.0 cu yds.	
21+60	RT	2.0 cu yds.	

DRIVEWAY PIPE CULVERTS REQUIRED			
STATION	LONG.	DIAM.	LENG.
22+50	RT	24"	30'



Catch Basin left of Sta. 14+00 to outlet into existing storm box if in good condition. If the storm box is in poor condition a 30" R.C.P. is to be constructed between Sta. 13+00 and Sta. 14+00 on left.



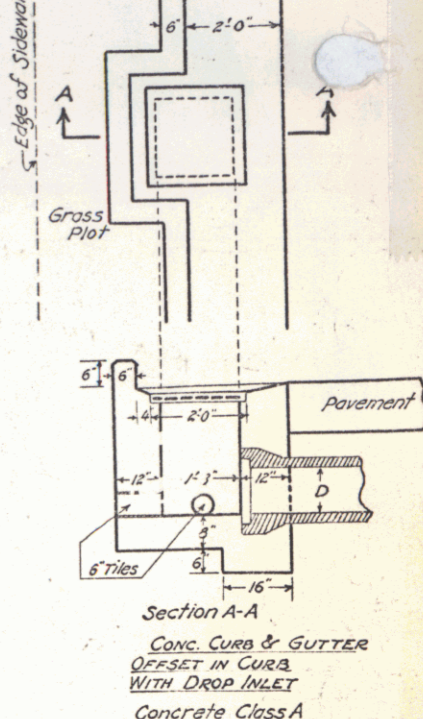
From Sta. 13+00 To Line 51+93 = 3693'

REV. CURVE #2  
 Δ 6'-03" RT  
 D 3'  
 R 1910.1'  
 T 100.3'  
 L 201.7'  
 E 2.1'

REV. CURVE #3  
 Δ 3'-03" RT  
 D 4'  
 R 1432.7'  
 T 113.4'  
 L 226.3'  
 E 4.5'

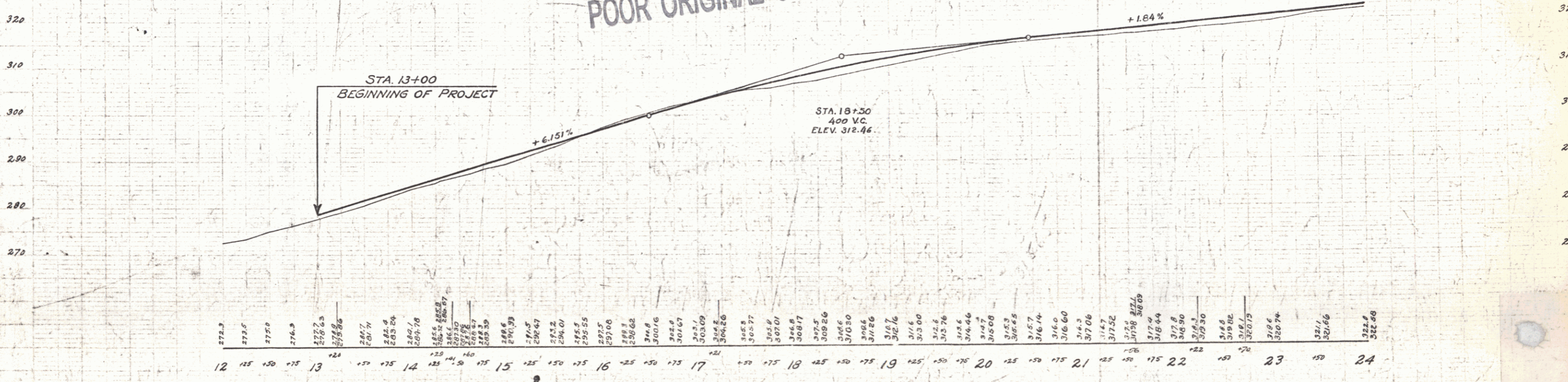
NOTE -  
 DRIVEWAYS TO BE CONSTRUCTED TO PROVIDE SATISFACTORY APPROACHES TO PAVEMENT AT LOCATIONS SHOWN ON THE CROSS-SECTIONS, OR DIRECTED BY THE ENGINEER.

U.S. ROAD DIST. NO.	STATE	FED. AID FISCAL YEAR	SHEET NO.	TOTAL SHEETS
78-C	VT.	1930	5	66



Section A-A  
 CONC. CURB & GUTTER OFFSET IN CURB WITH DROP INLET  
 Concrete Class A  
 Reinforcing Steel to be similar to that used in Standard Drop Inlet with Grate. See Sheet 2.  
 This design to be used where a grass plot occurs between the curb and the sidewalk.

POOR ORIGINAL COPY



B.M. #3 14" Elm Right of Sta. 16+85 Elev. 303.13

**CABLE GUARD RAIL REQUIRED**

STATIONS	LEFT	RIGHT
26+42-31+38	-	49G
39+50-40+00	50'	50'

**NEW REINF CONCRETE PIPE CULVERTS REQUIRED**

STA.	DIAM.	LENS	CONC. A	CONC. B	REIN. STEEL	DI	GUTTERS	ARREST TOP
26+70	18"	44'	29cy	-	260lbs.	2	1	1

**CULVERT HEAD WALLS TO BE CONSTRUCTED**

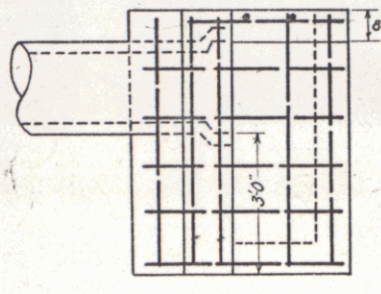
STATION	TYPE	CONC. A	REIN. STEEL
31+35	24" DIA	2.6 cy	54 lbs.
40+00	12" DIA	1.8	54

**CONCRETE CURB AND GUTTER REQUIRED**

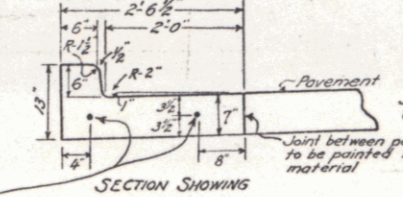
STATIONS	LEN	R	WIDTH	CURB	GUTTER	CONC. REIN.
24+00-29+50	L	2.0'	6"	36cy	409 lbs.	

**DRIVEWAY PIPE CULVERTS REQUIRED**

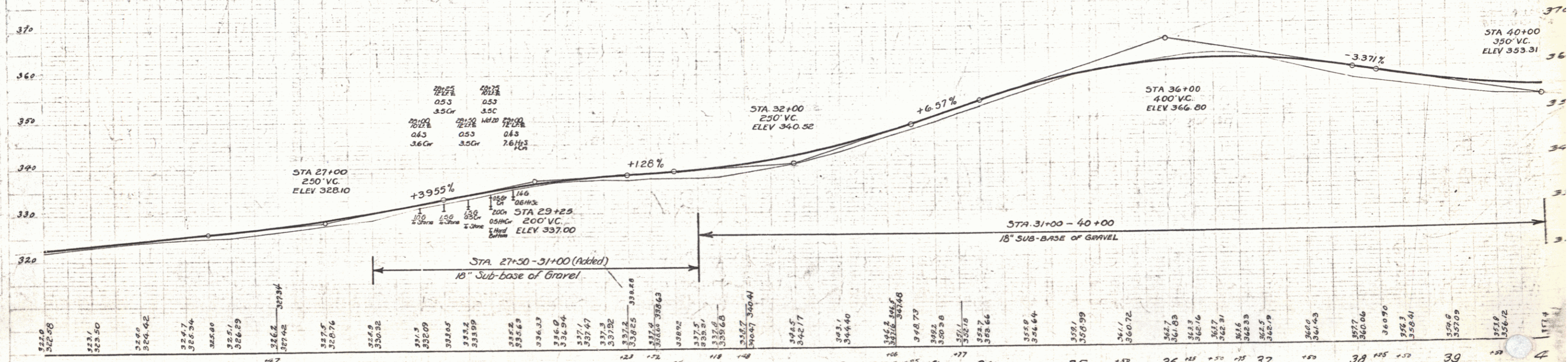
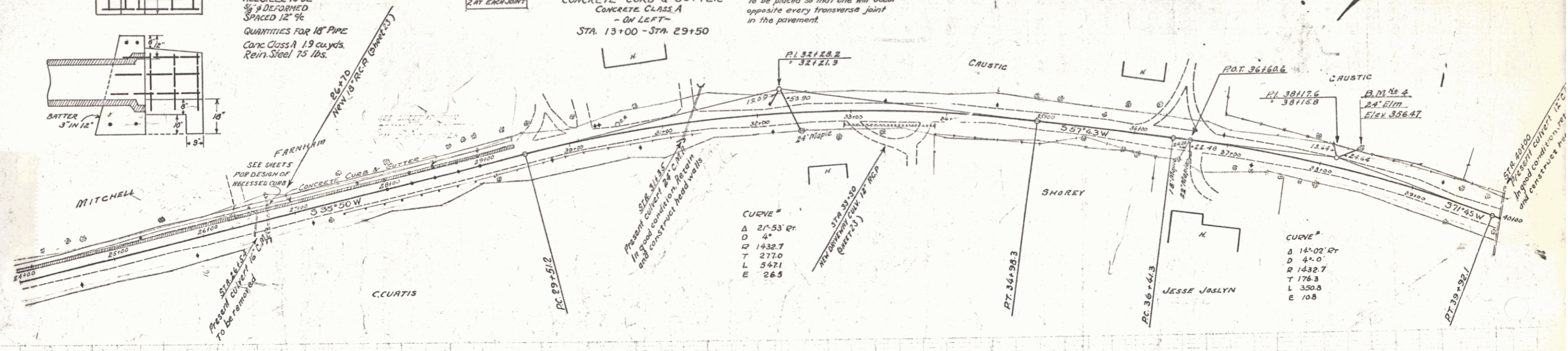
STATION	LEN	R	DIAM.	LENGTH	CEMENT PORTLAND MASONRY
33+50	A	12"	36"		23 cy



**DETAIL OF CULVERT HEADWALL L-TYPE CONC. CLASS A**  
 ALL STEEL TO BE 3/4" DEFORMED SPACED 12" O.C.  
 QUANTITIES FOR 18" PIPE CONC. CLASS A 19 CUBIC YDS. REIN. STEEL 15 LBS.



Note: Joints in Curb & Gutter not to exceed 8'0" apart. Promouled bituminous expansion joint filler 1/2" thick, to be placed between every 5th section (every 40'). Remaining joints to be either butt joints painted with bituminous material or cut plate joints.  
 Joints in Curb & Gutter section to be placed so that one will occur opposite every transverse joint in the pavement.



B.N. #4 24' Elmlet of Sta 38+38 Elev. 356.47

STATION	ELEVATION
24	322.0
25	323.50
26	324.42
27	324.7
28	325.34
29	325.80
30	326.29
31	326.8
32	327.42
33	327.9
34	328.5
35	329.07
36	329.72
37	330.38
38	331.05
39	331.72
40	332.4

PLANS COMPLETED	REVISIONS	DATE
Sta 27+30-31+00		3/6/20
15' Sub-base of Gravel		



**WOOD GUARD RAIL REQUIRED**

CULVERT STATION	LEFT	RIGHT
68+35	24'	24'
57+00	24'	24'

**NEW REINFORCED CONCRETE PIPE CULVERTS REQUIRED**

STATION	DIAM	LENG	CODE	CONC. C	REIN. STEEL
68+35	18"	36'	27 cy.	—	102 lbs.
57+00	15"	36'	1.8 cy.	—	54 lbs.

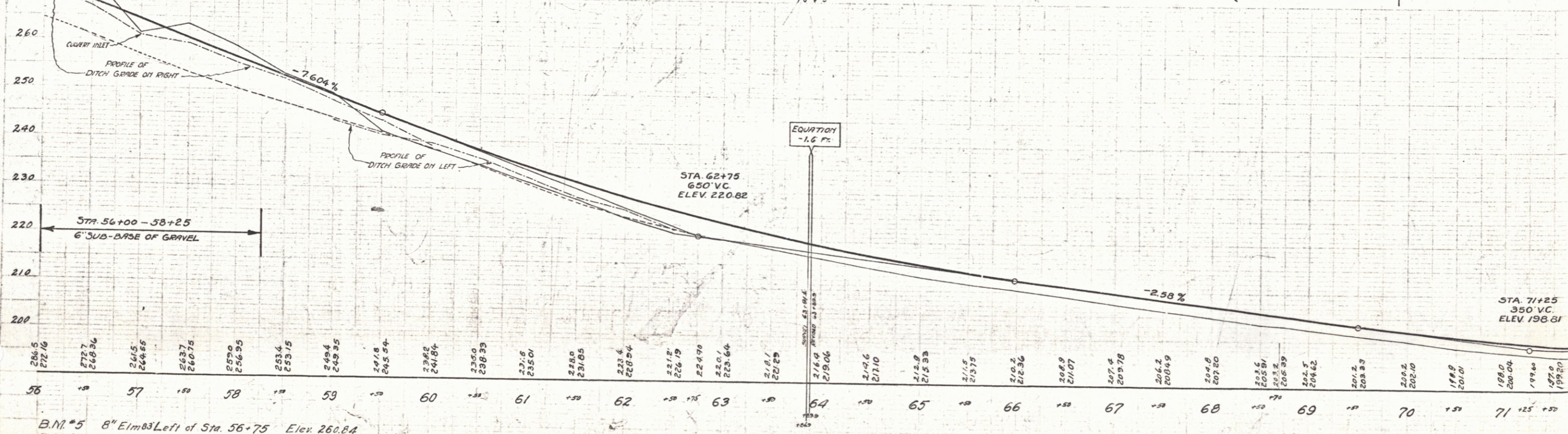
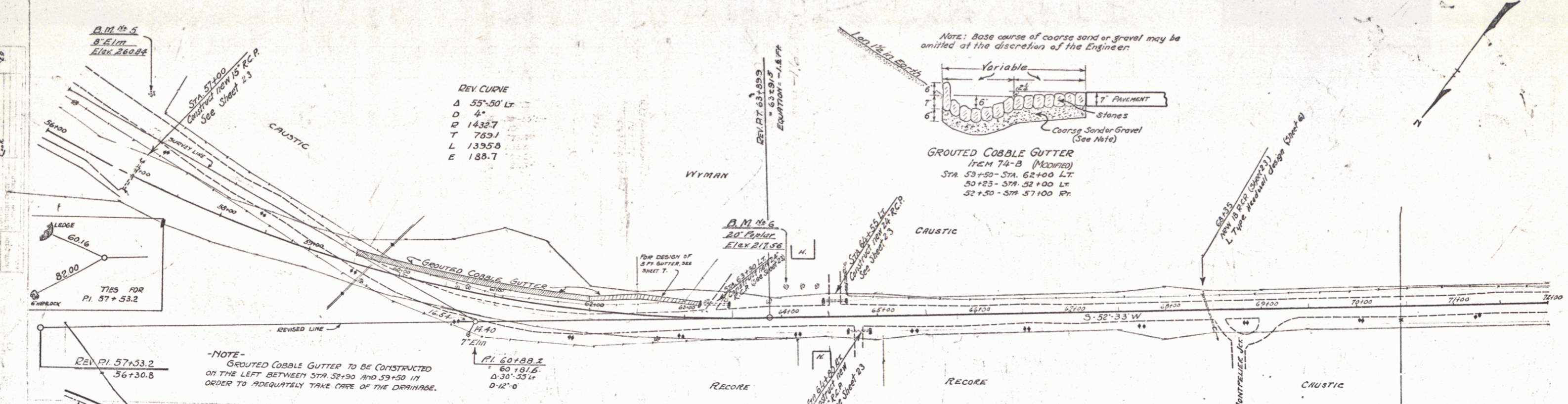
**DRIVEWAY PIPE CULVERTS REQUIRED**

STATION	LEN	DIAM	LENG	CEMENT	PIED	MASONRY
63+30	LT	24"	30'	4.0	cu. yds.	
64+35	LT	24"	24'	4.0	cu. yds.	
64+60	Rt	24"	24'	4.0	cu. yds.	

**GRAouted COBBLE GUTTER REQUIRED**

STATIONS	LEN	R	WIDTH	LENGTH	AREA
59+50-62+00	LT	VARIABLE	2'-0"	270.50	549.00
56+00-57+00	Rt	—	1'-0"	111	88.50
56+00-59+50	LT	5'-0"	1'-30"	72	34.50
62+00-63+30	LT	—	1'-30"	134.4	53.50

STATE OF ILLINOIS  
 DIST. NO. 78-C  
 YEAR 1950  
 SHEET NO. 8  
 TOTAL SHEETS 66



B.M. #5 8" Elm 83' Left of Sta. 56+75 Elev. 260.84  
 B.M. #6 20" Poplar 32' Left of Sta. 64+05 Elev. 217.56

SERIES F  
 SHEET 8

FD ROAD DIST. NO.	STATE	PROJ. NO.	FISCAL YEAR	SHEET NO.	TOTAL SHEETS
9	VI.	78-C	1950	9	66

WOOD GUARD RAIL REQUIRED

CULVERT STATION	LEFT	RIGHT
74+36	24'	24'
75+25	24'	24'
86+47	24'	-

CABLE GUARD RAIL REQUIRED

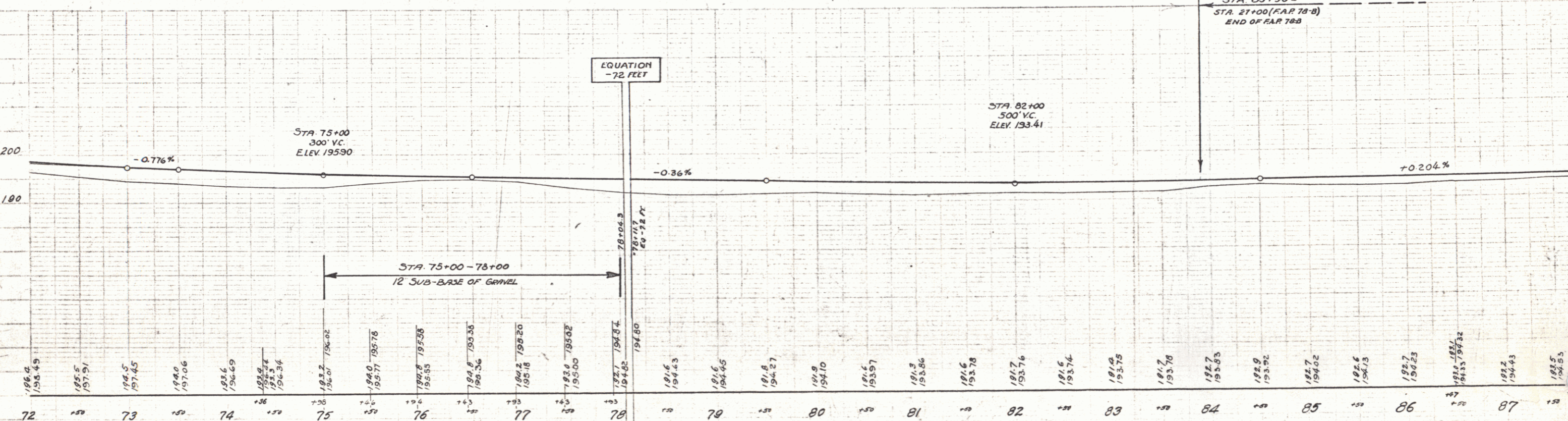
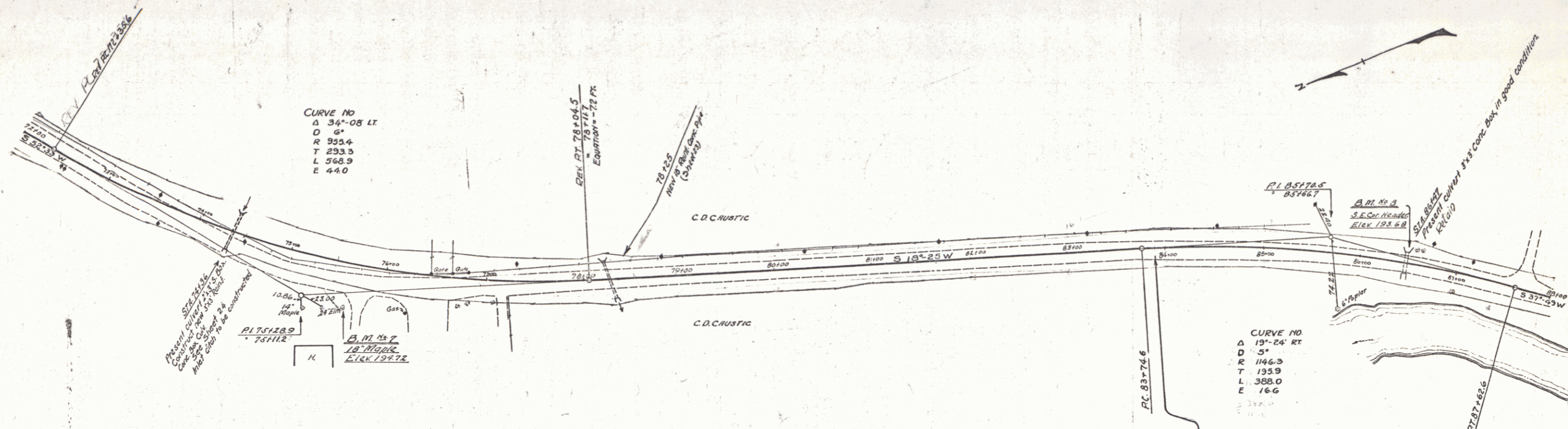
STATIONS	LEFT	RIGHT
86+04-87+00	-	96'

NEW REIN. CONCRETE PIPE CULVERTS REQUIRED

STATION	DIAM.	LENG.	CONC. A	CONC. C	REIN. STEEL
78+25	18"	40'	18 cy	-	54 lbs.

NEW REIN. CONCRETE BOX CULVERTS REQUIRED

STATION	SIZE	CONC. A	REIN. STEEL
74+36	3'x3'	18.2 cy	1216 lbs.



B.M. #7 18" Maple Right of Sta. 75+65 Elev. 194.72  
 B.M. #8 S.E. Cor. Conc. Header Left of Sta. 86+47 Elev. 193.68

SERIES F  
 SHEET 9

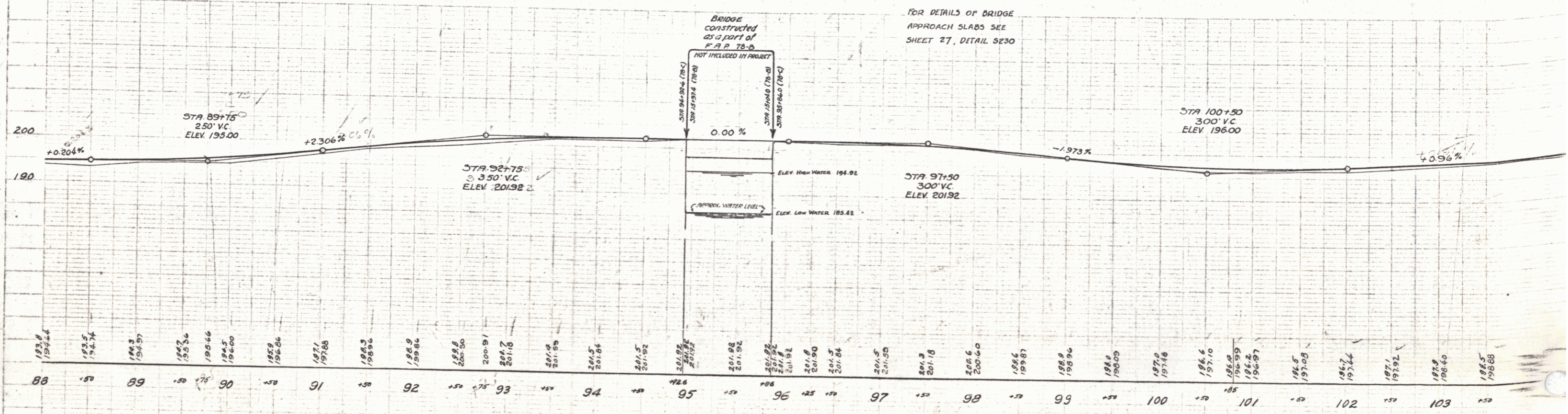
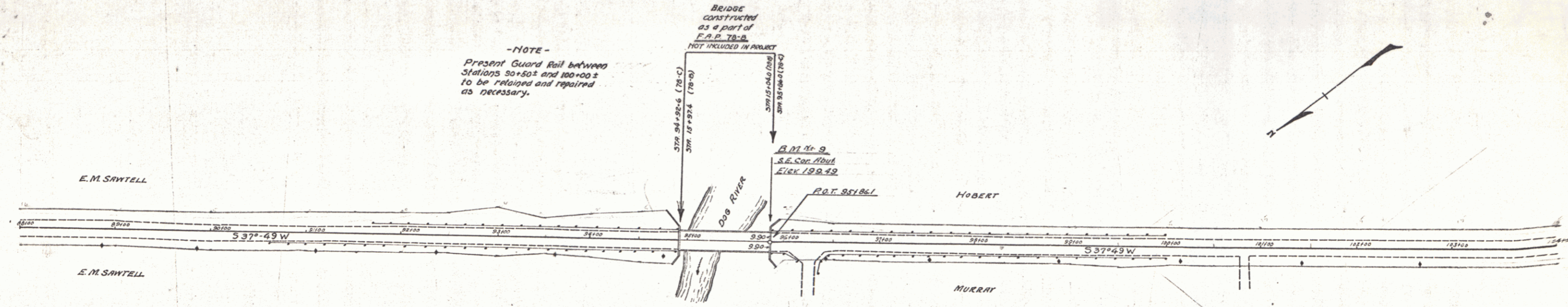
88-104

ED. ROAD STATE	FED. AID	FISCAL YEAR	SHEET NO.
Dist. No.	Proj. No.	1930	10
9	78-C	1930	10

PLAN  
 1/2" = 100'  
 1/4" = 100'  
 1/8" = 100'

1/2" = 100'  
 1/4" = 100'  
 1/8" = 100'

1/2" = 100'  
 1/4" = 100'  
 1/8" = 100'



B.M. #9 S.E. Cor. Abutment Left of Sta. 95+86 Elev. 199.49  
 16.8 ft

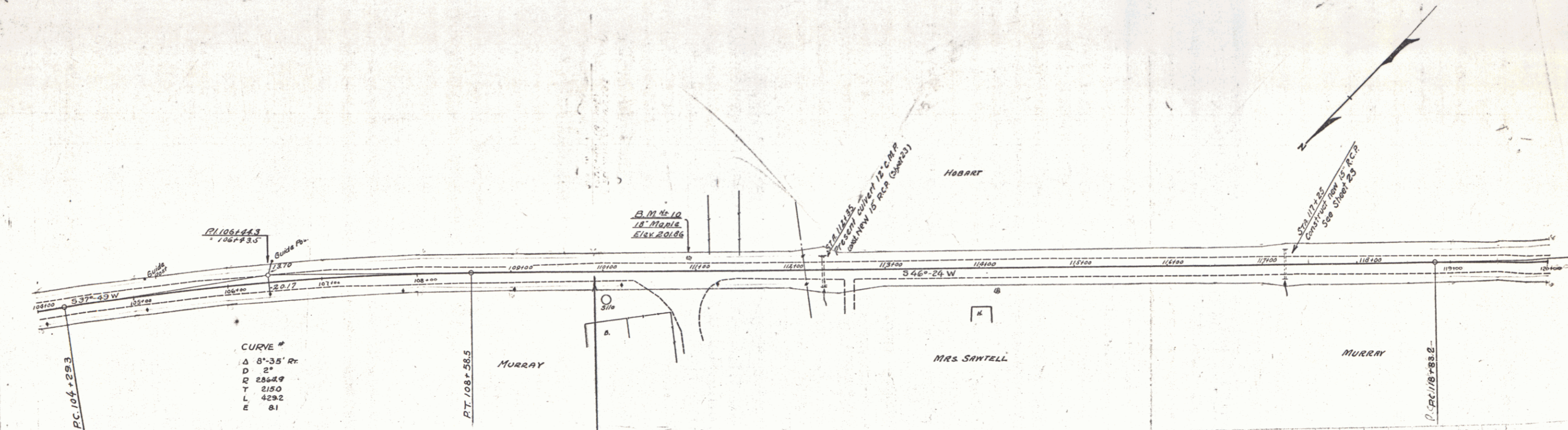
SERIES  
 SHEET 10

WOOD GUARD RAIL REQUIRED

CULVERT STATION	LEFT	RIGHT
112+35	24'	24'
117+25	24'	24'

NEW REIN. CONCRETE PIPE CULVERTS REQUIRED

STATION	DIAM.	LENG.	CONCR.	CONC. C.	REIN. SIZES
112+35	18"	36'	—	2.3	3/8"
117+25	18"	32'	—	2.3	3/8"



CURVE #  
 Δ 8°-35' Rr  
 D 2'  
 R 286.49  
 T 2150  
 L 429.2  
 E 81



104	198.9	199.36	105	198.2	199.84	106	198.2	200.32	107	200.2	200.77	108	200.6	201.16	109	200.6	201.50	110	201.4	201.64	111	200.8	201.77	112	201.2	201.90	113	200.5	201.90	114	200.5	202.14	115	200.5	202.23	116	201.0	202.30	117	201.6	202.30	118	201.5	202.43	119	201.5	202.43	120	201.9	202.50	121	201.6	202.57	122	201.4	202.63	123	201.4	202.63	124	201.8	202.70	125	201.5	202.77	126	201.5	202.77	127	201.7	202.83	128	201.8	202.90	129	202.1	202.97	130	201.9	203.03	131	201.8	203.10	132	201.6	203.17	133	201.5	203.23	134	201.1	203.30	135	201.0	203.37	136	200.9	203.43	137	201.1	203.50	138	200.5	203.57	139	200.5	203.63	140	202.2	203.70
-----	-------	--------	-----	-------	--------	-----	-------	--------	-----	-------	--------	-----	-------	--------	-----	-------	--------	-----	-------	--------	-----	-------	--------	-----	-------	--------	-----	-------	--------	-----	-------	--------	-----	-------	--------	-----	-------	--------	-----	-------	--------	-----	-------	--------	-----	-------	--------	-----	-------	--------	-----	-------	--------	-----	-------	--------	-----	-------	--------	-----	-------	--------	-----	-------	--------	-----	-------	--------	-----	-------	--------	-----	-------	--------	-----	-------	--------	-----	-------	--------	-----	-------	--------	-----	-------	--------	-----	-------	--------	-----	-------	--------	-----	-------	--------	-----	-------	--------	-----	-------	--------	-----	-------	--------	-----	-------	--------	-----	-------	--------

B.M. #10 18" Maple Left of Sta. 110+93 Elev. 201.86

SERIES SHEET 11

30-136

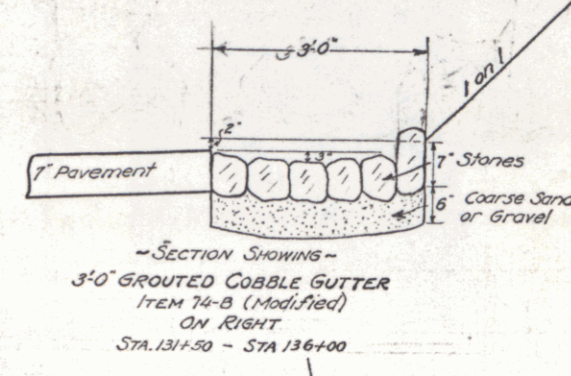
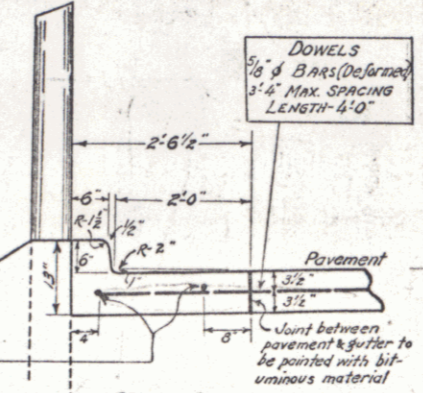
WOOD GUARD RAIL REQUIRED			CABLE GUARD RAIL REQUIRED			NEW REIN. CONCRETE PIPE CULVERTS REQUIRED						
CULVERT STATION	LEFT	RIGHT	STATIONS	LEFT	RIGHT	STR. DIAM.	LEN.	CONC. A	CONC. C	REIN. STEEL	D.I.	EXPOSED TOP
130+80	-	24'	130+38-135+26	4.88'	-	130+50	18'	4.0'	1.5	1.5	174	1b.

CONCRETE CURB & GUTTER REQUIRED				
STATIONS	L. OR R.	WIDTH	CURE SET	STEEL
130+80-134+50	L.	2'-0"	6'	24 ex 733 lbs.

GROUTED COBBLE GUTTER REQUIRED				
STATIONS	L. OR R.	WIDTH	LENGTH	AREA
134+50-136+00	R.	3'-0"	45'-0"	150 sq yds.

Joints in Curb & Gutter section to be placed so that one will occur opposite every transverse joint in the pavement.

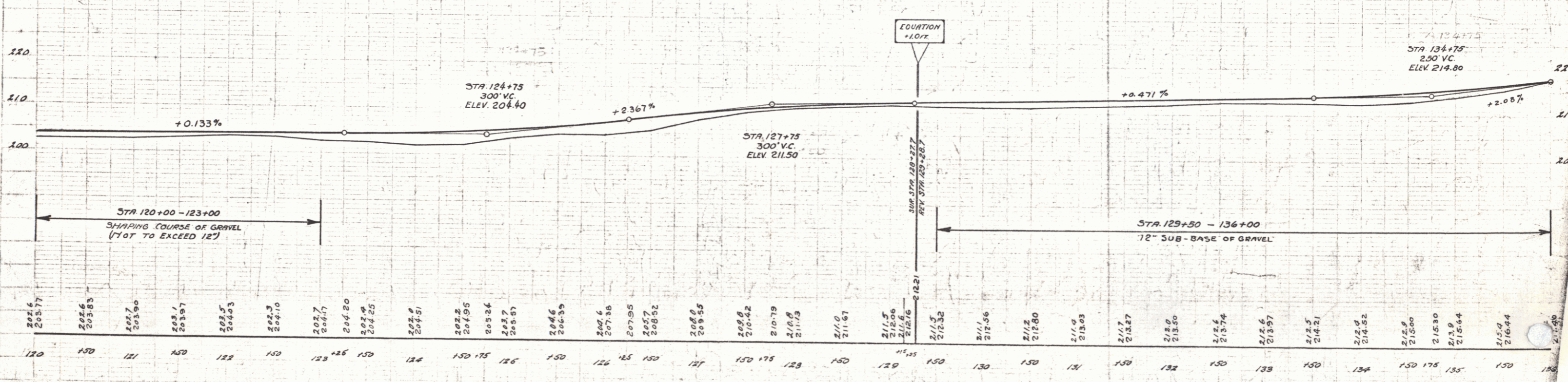
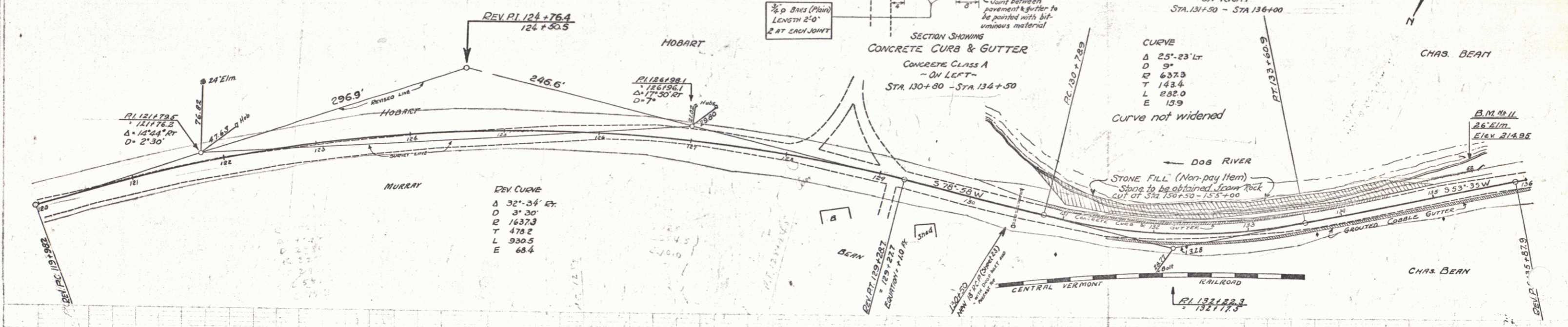
Note: Joints in Curb and Gutter not to exceed 9" apart. Provisioned bituminous expansion joint filler, 1/2" thick, to be placed between every 5th section (every 40') (drainage joints to be either full joints pointed with bituminous material or cut plate joints).



CURVE

Δ	25°-23' Lt
D	9"
E	637.3
T	143.4
L	282.0
E	13.9

Curve not widened



1940  
Curb  
1228

1952  
Gravel  
1258

FED. ROAD DIST. NO.	STATE	FED. AID PROJ. NO.	FISCAL YEAR	SHEET NO.	TOTAL SHEETS
VI	VT.	70-C	1950	12	66

SERIES F No. 75C  
SHEET 12 OF 66

**WOOD GUARD RAIL REQUIRED**

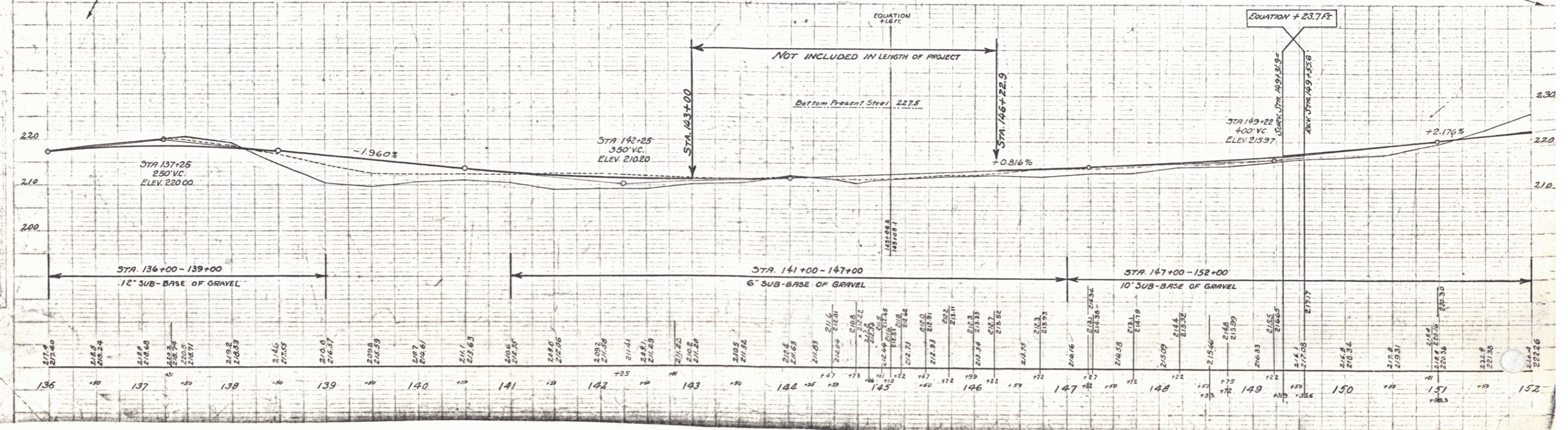
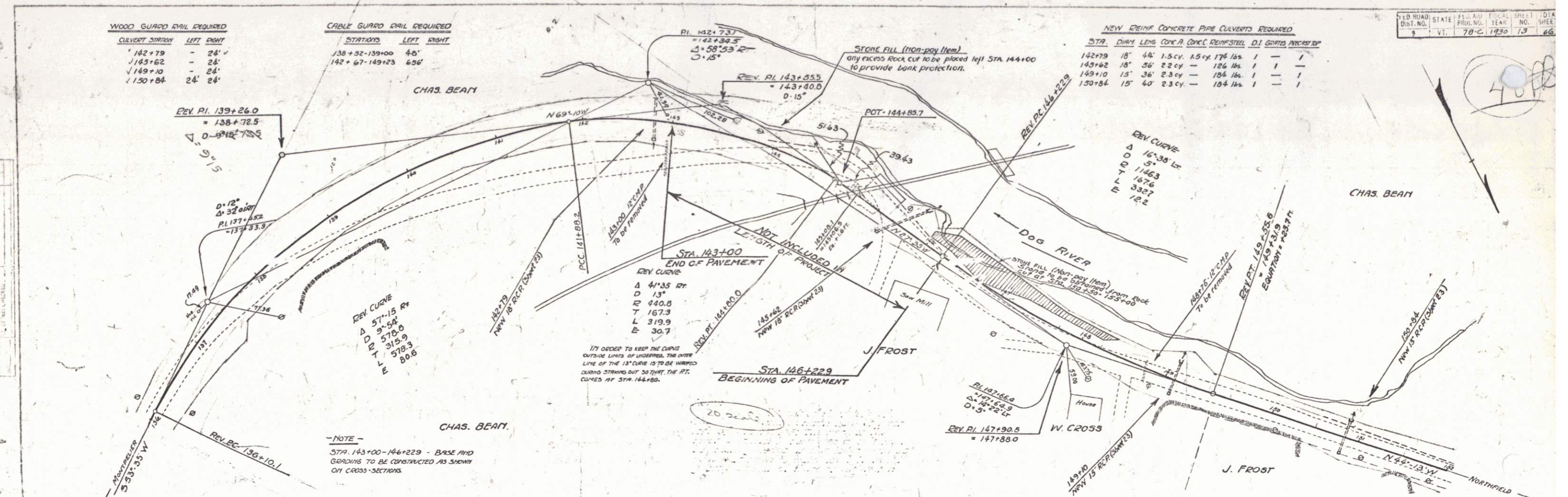
STATION	LEFT	RIGHT
142+79	-	24'
143+62	-	24'
149+10	-	24'
150+84	24'	24'

**CABLE GUARD RAIL REQUIRED**

STATIONS	LEFT	RIGHT
138+52-139+00	40'	
142+67-149+23	65'	

**NEW 24" CONCRETE PIPE CULVERTS REQUIRED**

STA.	DIAM.	LEN.	CONC.	CONC.	REINSTEEL	D.I.	GRATES	PROTECT.
142+79	18"	44'	1.5 cy	1.5 cy	176 lbs.	1	1	1
143+62	18"	36'	2.3 cy	-	126 lbs.	1	1	1
149+10	15"	36'	2.3 cy	-	126 lbs.	1	1	1
150+84	15"	40'	2.3 cy	-	126 lbs.	1	1	1



WOOD GUARD RAIL REQUIRED		
CULVERT STATION	LEFT	RIGHT
V 157+34	-	24'
V 154+62	24'	24'

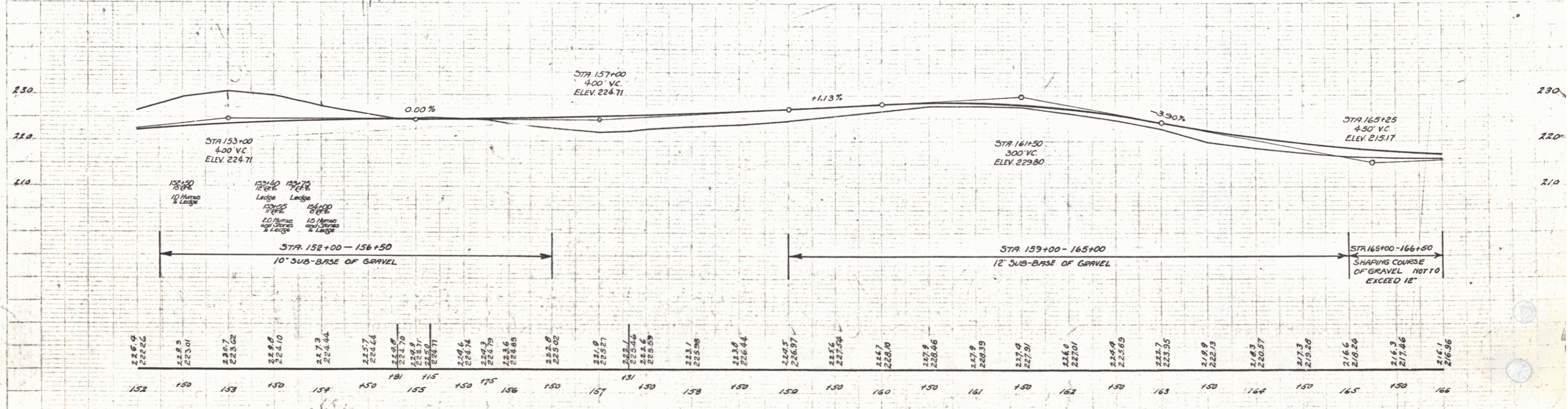
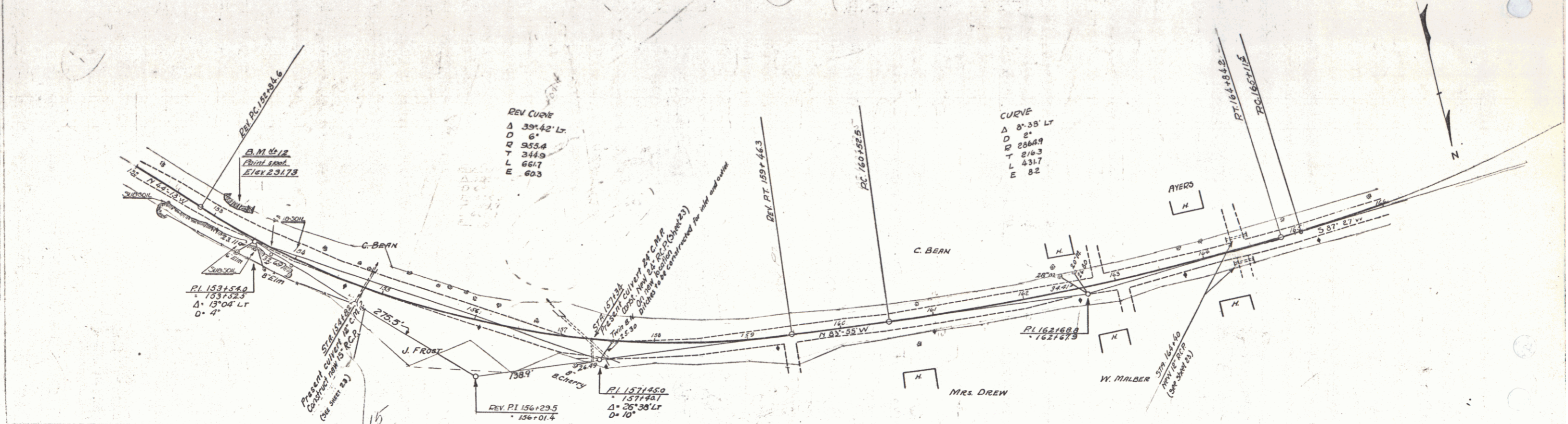
CABLE GUARD RAIL REQUIRED		
STATIONS	LEFT	RIGHT
156+50-157+46	36'	-

NEW REIN CONCRETE PIPE CULVERTS REQUIRED				
STATION	DIAM	LENS	CONC	REIN STEEL
157+34	24"	76'	2.4cy	54 lbs.
154+62	18"	48'	1.0cy	54 lbs.

DRIVEWAY PIPE CULVERTS REQUIRED				
STATION	DIAM	LENS	CEMENT	CURABLE MASONRY
164+40	12"	24'	2.3 cu yds.	
164+40	12"	24'	2.3 cu yds.	

FIELD NO. STATE PROJ. NO. FISCAL YEAR SHEET TOTAL  
 75-C 1936 66

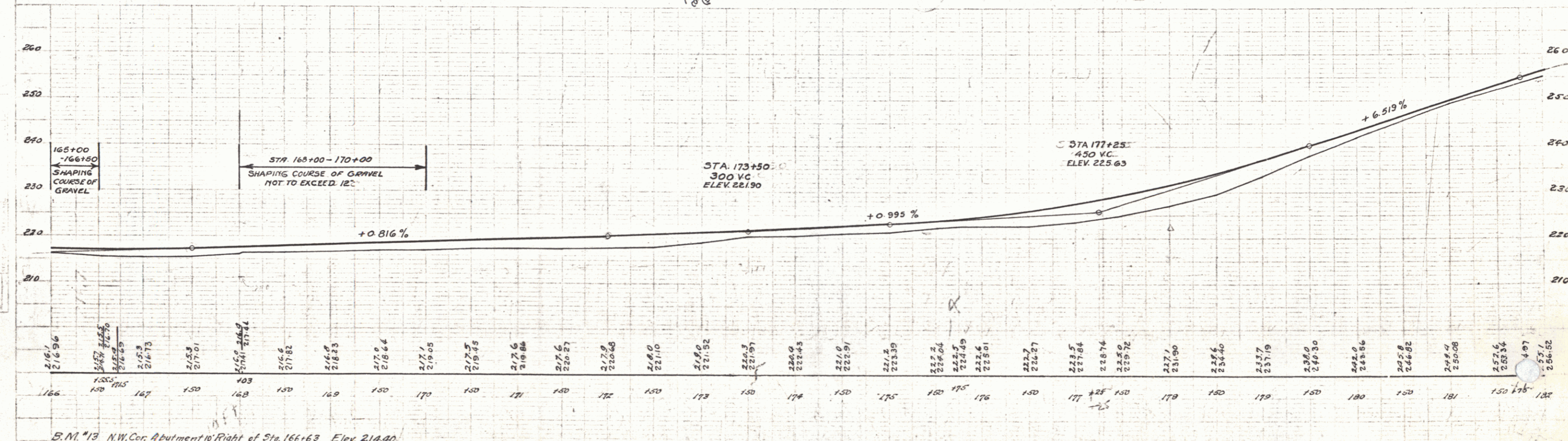
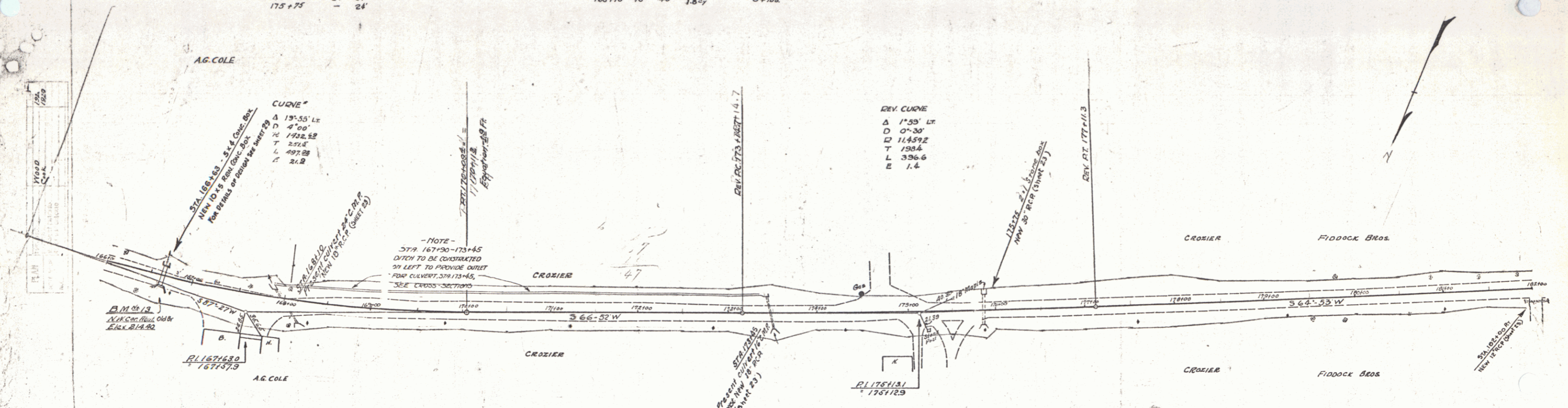
1937  
 1938  
 1939  
 1940  
 1941  
 1942  
 1943  
 1944  
 1945  
 1946  
 1947  
 1948  
 1949  
 1950  
 1951  
 1952  
 1953  
 1954  
 1955  
 1956  
 1957  
 1958  
 1959  
 1960  
 1961  
 1962  
 1963  
 1964  
 1965  
 1966  
 1967  
 1968  
 1969  
 1970  
 1971  
 1972  
 1973  
 1974  
 1975  
 1976  
 1977  
 1978  
 1979  
 1980  
 1981  
 1982  
 1983  
 1984  
 1985  
 1986  
 1987  
 1988  
 1989  
 1990  
 1991  
 1992  
 1993  
 1994  
 1995  
 1996  
 1997  
 1998  
 1999  
 2000



B.M. #12 Faint spot on ledge Left of Sta. 153+20 Elev. 231.73

SERIES F No 78C  
 SHEET 18 OF 66

WOOD GUARD RAIL REQUIRED				CABLE GUARD RAIL REQUIRED				NEW REIN. CONCRETE PIPE CULVERTS REQUIRED					DEWEY PIPE CULVERTS REQUIRED				NEW REIN. CONG. BOX CULVERTS REQUIRED			
CULVERT STATION	LEFT	RIGHT		STATIONS	LEFT	RIGHT		STATION	DIAM.	LENG.	CONC. A.	CONC. C.	REIN. STEEL	STATION	SIZE	CONC. CLASS	REIN. STEEL			
168+10	24'	24'		175+62-178+42	200'	-		173+45	18"	40'	1.8cy	-	54 lbs.	182+00	RT. 12" 24"	2.5 cu. Yds.	-			
173+45	24'	24'		166+31-166+93	64'	64'		175+75	30"	36'	3.2cy	-	58 lbs.	166+63	10x5	55.0 cy	4.440*			
175+75	-	24'						168+10	18"	40'	1.8cy	-	54 lbs.							



B.M. #13 N.W. Cor. Abutment 10' Right of Sta. 166+63 Elev. 214.40

13

WOOD GUARD RAIL DE

STATION	LEFT	RIGHT
193+40	24'	4'

NEW REIN. CONCRETE PIPE CULVERTS REQUIRED

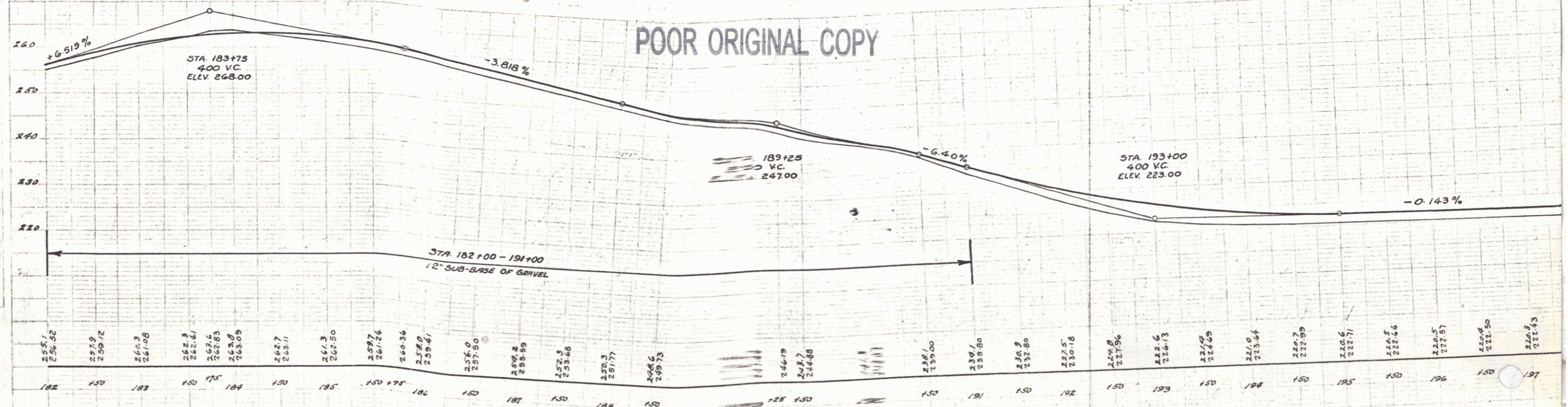
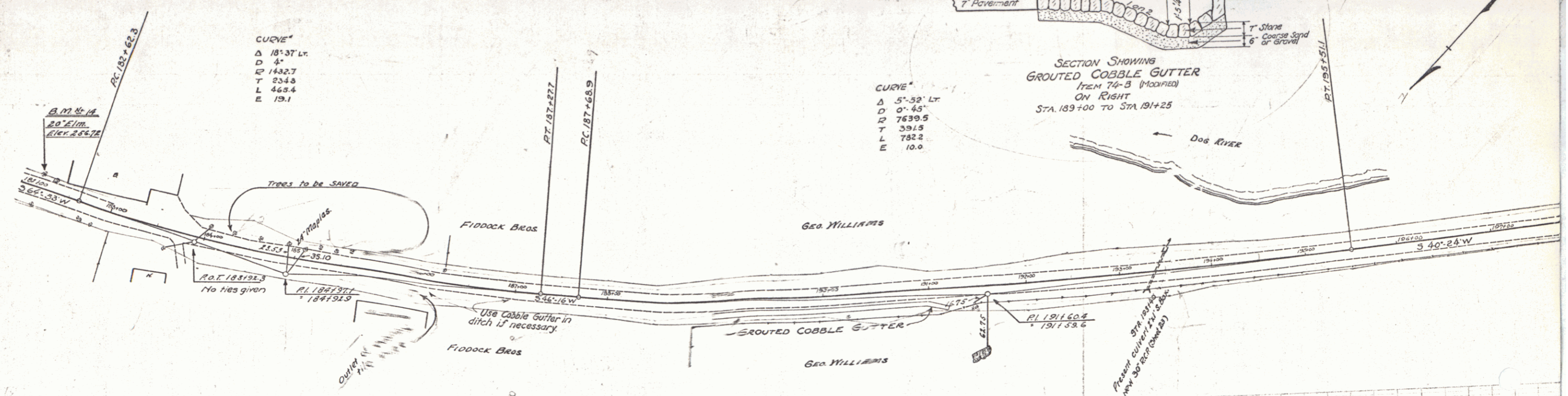
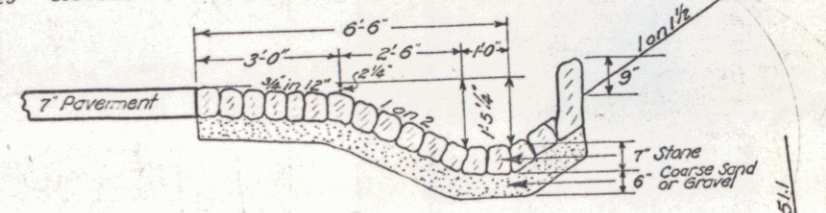
STATION	DIAM.	LENS	CONC. A	CONC. B	REIN. STEEL
193+40	30"	44'	32-cy	-	58 lbs.

GROUTED COBBLE GUTTER REQUIRED

STATIONS	LEAD	WIDTH	LENGTH	AREA
189+00-191+25	Rt.	8'-0"	225'	200 sq. yds.

CURVE  
 Δ 18° 37' Lt.  
 D 4"  
 E 1432.7  
 T 234.3  
 L 463.4  
 E 19.1

CURVE  
 Δ 5° 52' Lt.  
 D 0° 45"  
 E 7639.5  
 T 331.5  
 L 782.2  
 E 10.0



B.M. #14 20' Elm, Left of Sta. 182+15 Elev. 256.72

POOR ORIGINAL COPY

193-714

WOOD GUARD RAIL REQUIRED

CULVERT STATION	LEFT	RIGHT
207+50	-	24'
209+50	-	24'

CRADLE GUARD RAIL REQUIRED

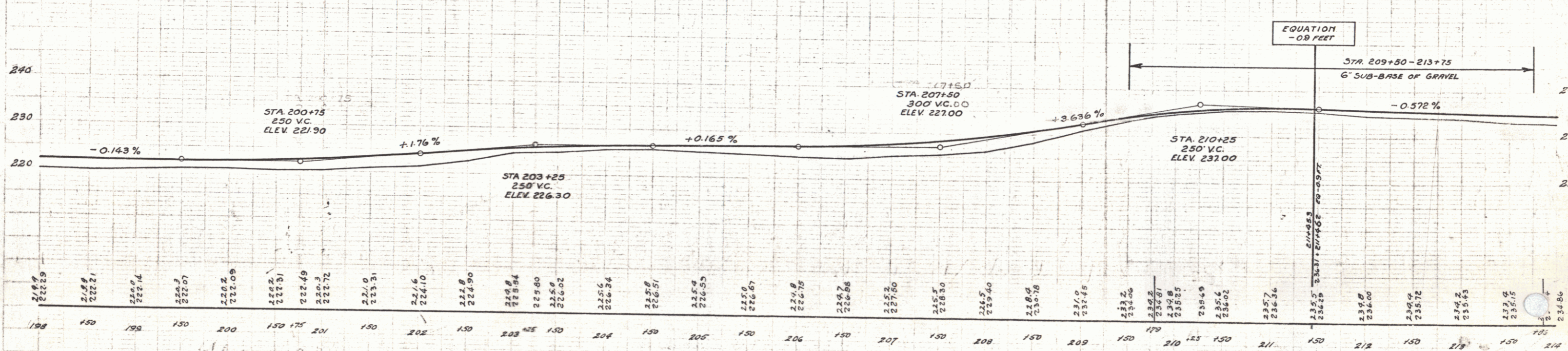
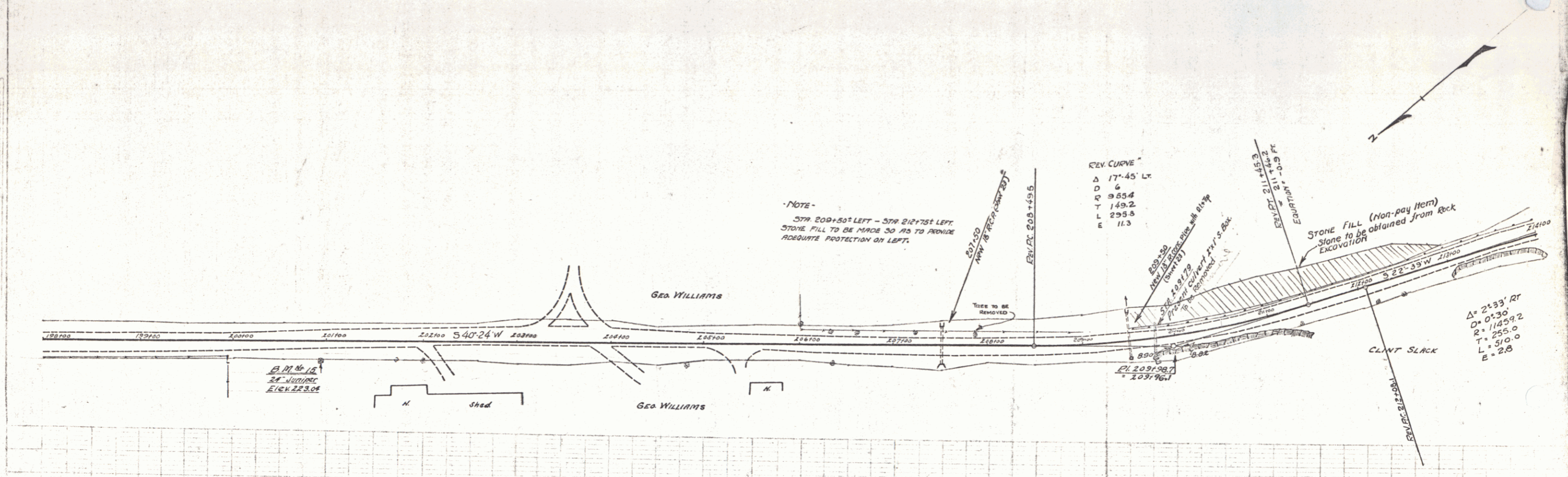
STATIONS	LEFT	RIGHT
207+35 - 214+00	665'	-

NEW REINF. CONCRETE PIPE CULVERTS REQUIRED

STA.	DIAM.	LENG.	CONC. A.	CONC. C.	REIN. STEEL	DI.	PROPORTION
207+50	18"	40'	1.8 cy	-	54 lbs.	-	-
209+50	18"	48'	2.3 cy	-	104 lbs.	1	1

FILE NO. STATE FEDERAL DATE  
 951. NO. PROJ. NO. YEAR  
 V VI. 78-C. 1980 17

1928  
 1950  
 1952  
 1953  
 1954  
 1955  
 1956  
 1957  
 1958  
 1959  
 1960  
 1961  
 1962  
 1963  
 1964  
 1965  
 1966  
 1967  
 1968  
 1969  
 1970  
 1971  
 1972  
 1973  
 1974  
 1975  
 1976  
 1977  
 1978  
 1979  
 1980  
 1981  
 1982  
 1983  
 1984  
 1985  
 1986  
 1987  
 1988  
 1989  
 1990  
 1991  
 1992  
 1993  
 1994  
 1995  
 1996  
 1997  
 1998  
 1999  
 2000  
 2001  
 2002  
 2003  
 2004  
 2005  
 2006  
 2007  
 2008  
 2009  
 2010  
 2011  
 2012  
 2013  
 2014  
 2015  
 2016  
 2017  
 2018  
 2019  
 2020  
 2021  
 2022  
 2023  
 2024



B.M. #15 24" Juniper 2' Right of Sta. 200+93 Elev. 223.04

SERIES F No 78C  
 SHEET 17 OF 66

WOOD GUARD RAIL REQUIRED

CULVERT STATION	LEFT	RIGHT
214+00	-	24'
216+00	24'	24'
221+42	-	24'

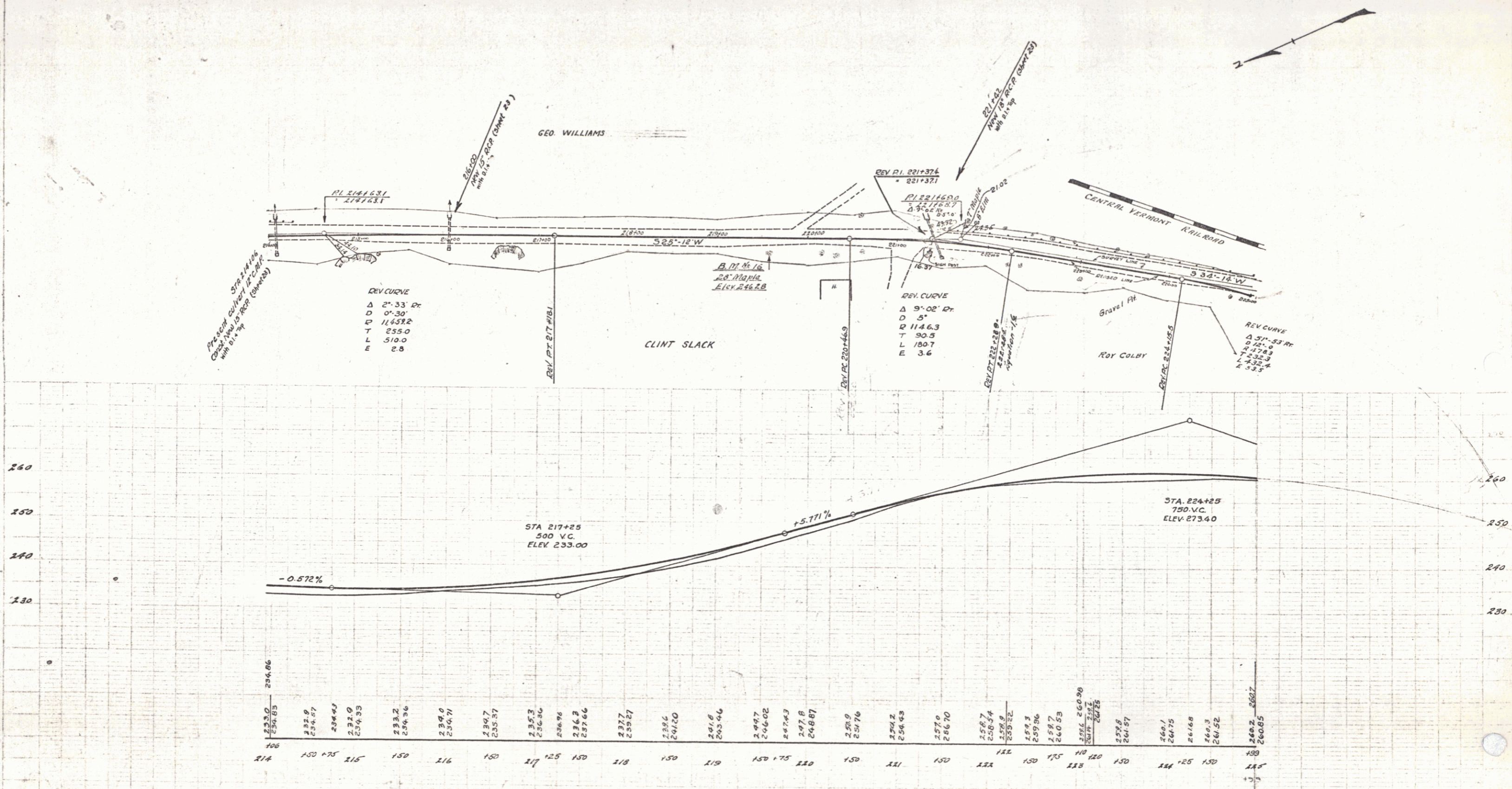
CABLE GUARD RAIL REQUIRED

STATIONS	LEFT	RIGHT
214+00 - 214+15	-15'	-
220+80 - 224+00	-400'	-

NEW REINFORCED CONCRETE PIPE CULVERTS REQUIRED

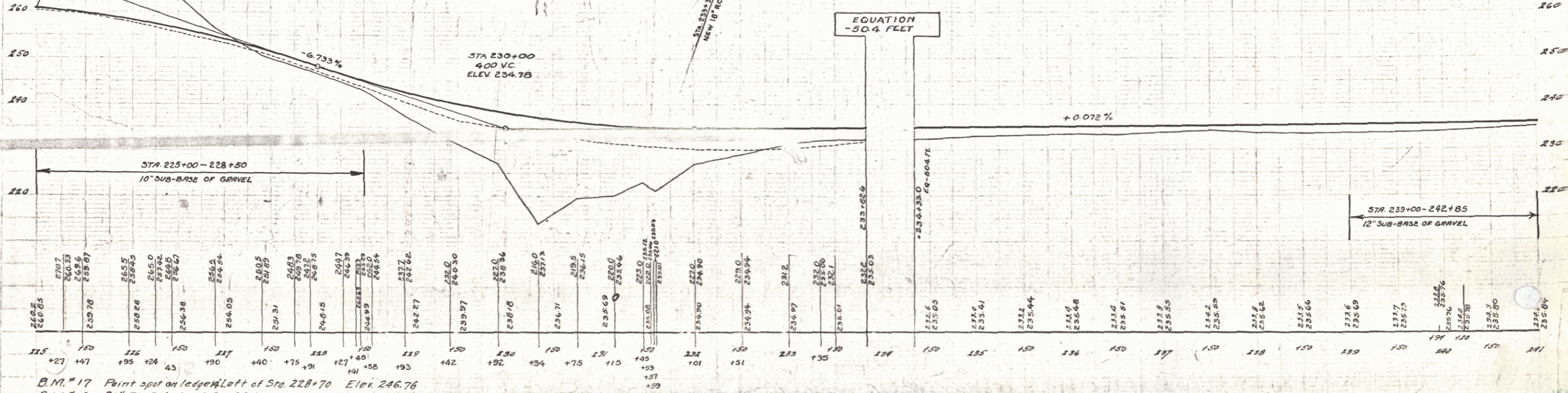
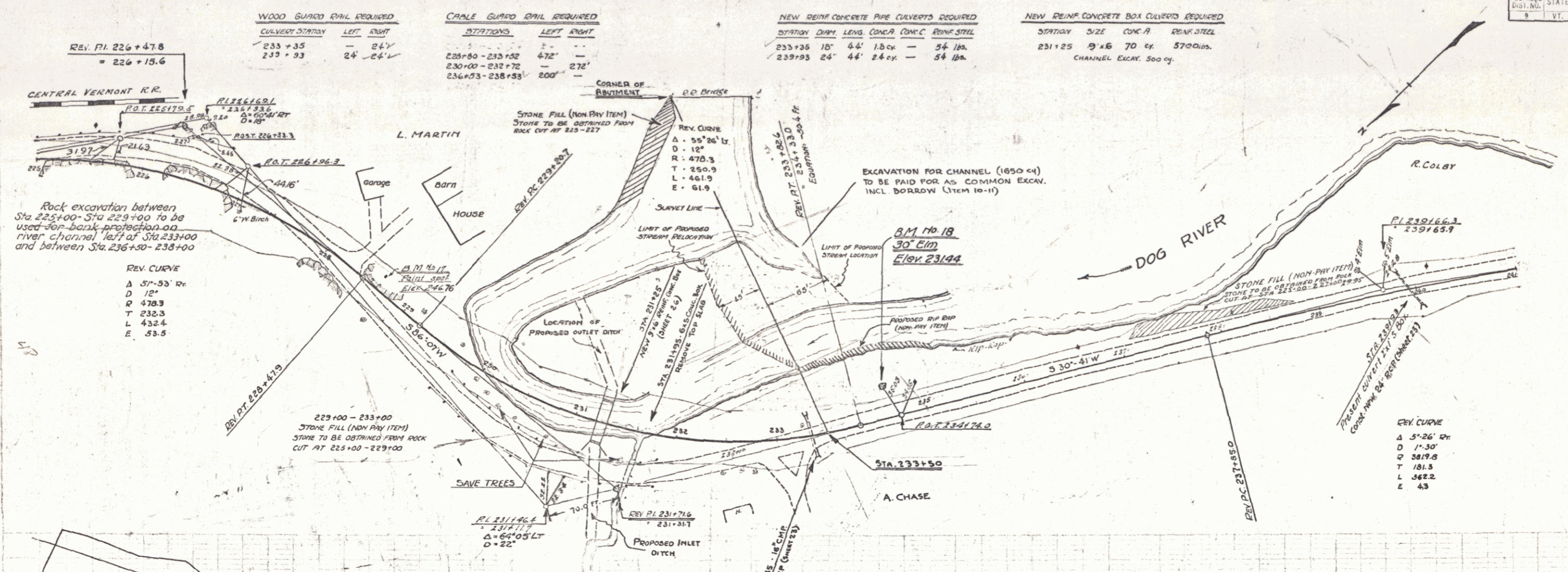
STA.	DIM'S	LENG.	CONC. A.	CONC. C.	REIN-STEEL	D.I.	APPROX. TOP
214+06	15' 40"	2.3 cy	-	104 lbs.	1	1	
216+07	15' 36"	2.3 cy	-	104 lbs.	1	1	
221+42	15' 48"	2.3 cy	-	104 lbs.	1	1	

STATE PROJECT NO. 76-C-1950 SHEET NO. 16 OF 66



B.M. #16 28' Maple T Right of Sta. 219+5.7 Elev. 246.28

SERIES F N78C  
SHEET 16 OF 66



B.M. #17 Point spot on ledge Left of Sta. 228+70 Elev. 246.76  
 B.M. #18 30" Elm Left of Sta. 234+60 Elev. 231.44

**WOOD GUARD RAIL REQUIRED**

CULVERT STATION	LEFT	RIGHT
244+00	-	24'
250+00	-	24'
255+75	-	24'

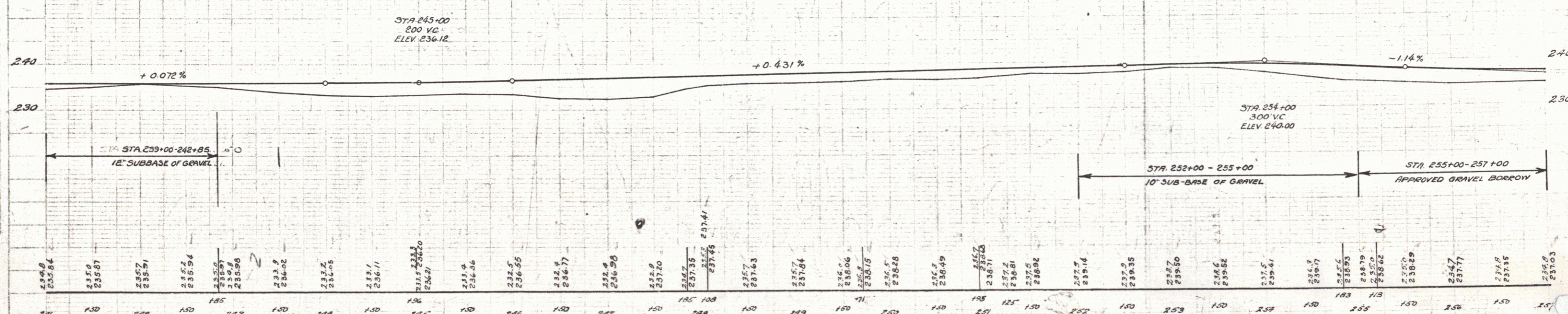
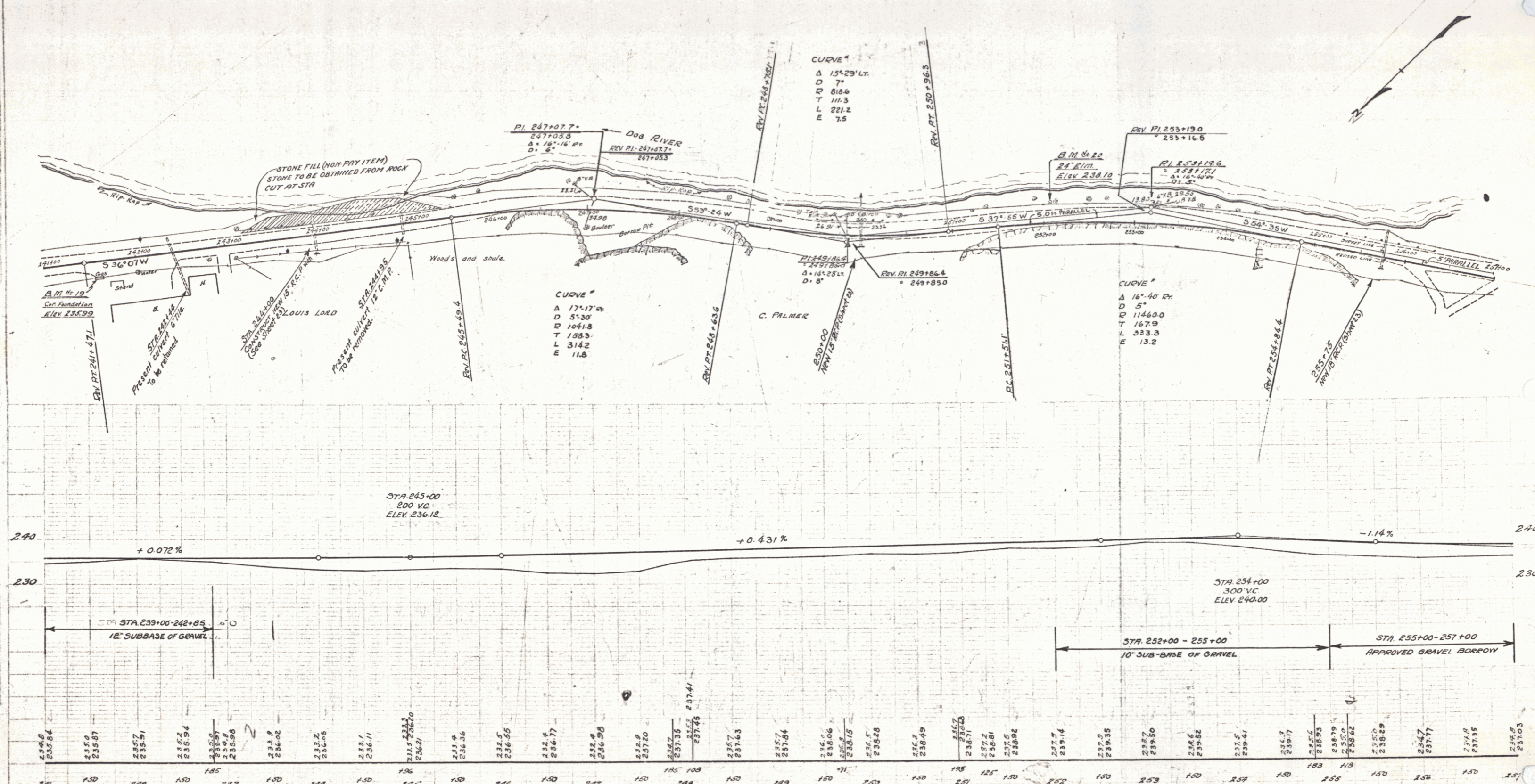
**CABLE GUARD RAIL REQUIRED**

STATIONS	LEFT	RIGHT
243+00-256+52	1352'	-

**NEW REIN. CONCRETE PIPE CULVERTS REQUIRED**

STA.	CHURN	LENG.	CONC.	CONC. EDGES	STEEL	D.I.	PRECAST TOP
244+00	15"	44'	-	1.2-y.	17 lbs.	-	-
250+00	15"	40'	-	1.2-y.	17 lbs.	-	-
255+75	15"	40'	-	1.5-y.	17 lbs.	-	-

1928  
 1925  
 1923  
 Wood  
 Girders  
 Girders  
 1923



B.M. #19 Cor. Foundation Right of Sta. 241+55 Elev. 235.99  
 B.M. #20 24" Elm Left of Sta. 252+05 Elev. 238.10

**WOOD GUARD RAIL REQUIRED**

CULVERT STATION	LEFT	RIGHT
258+95	24'	24'

**CABLE GUARD RAIL REQUIRED**

STATIONS	LEFT	RIGHT
269+48 - 270+12	64'	
269+00 - 270+12		112'

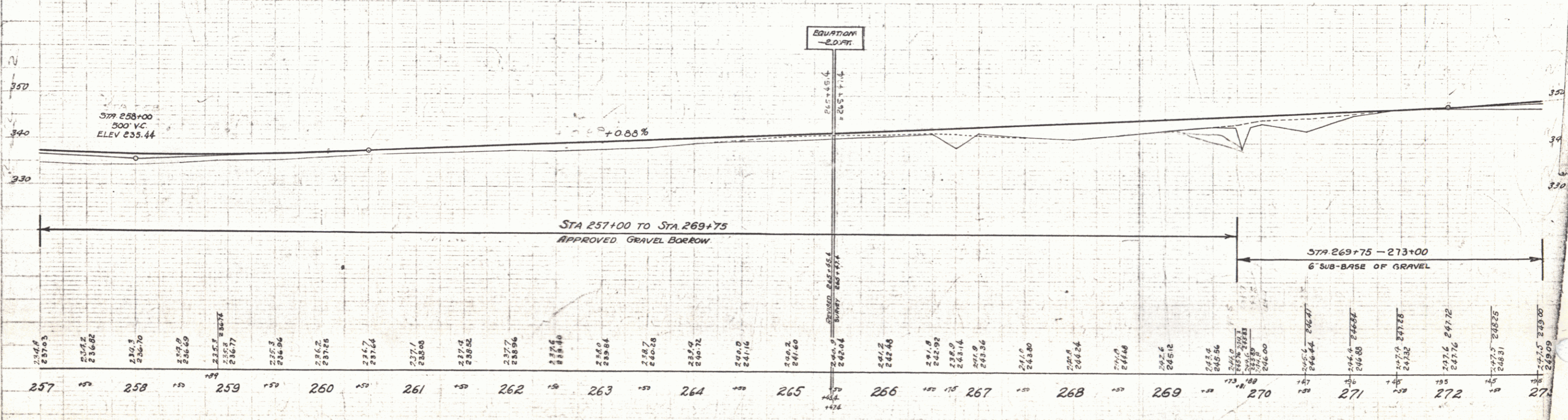
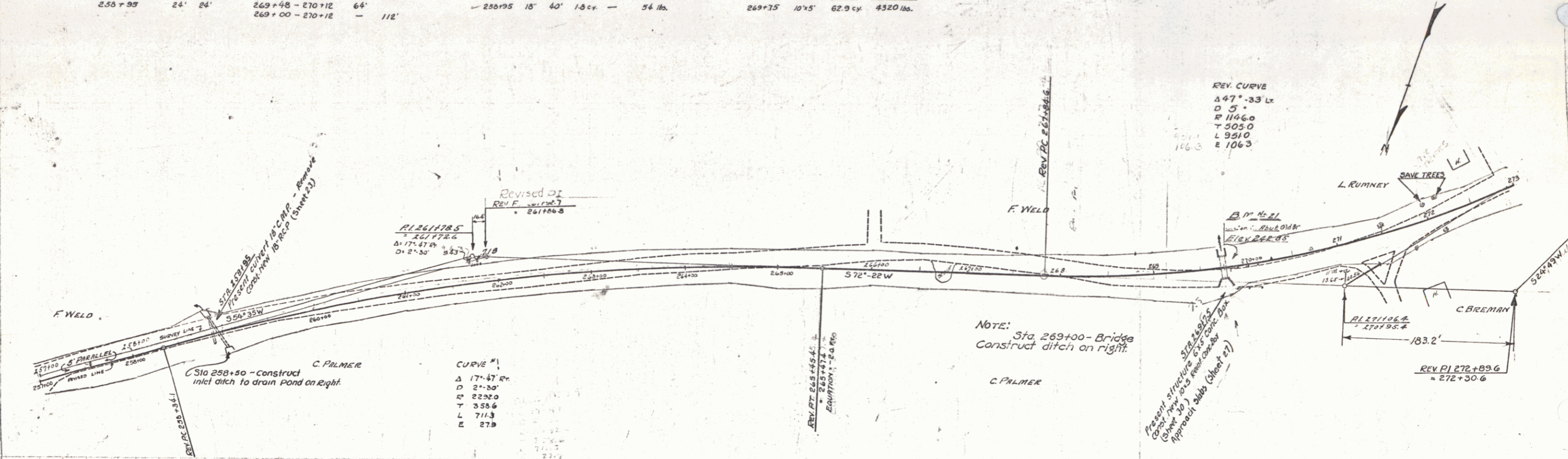
**NEW REIN. CONCRETE PIPE CULVERTS REQUIRED**

STATION	DIAM.	LENG.	CONC. P.	CONC. C.	REIN. STEEL
258+95	18" 40'	1.8 cy			54 lbs.

**NEW REIN. CONCRETE BOX CULVERTS REQUIRED**

STATION	SIZE	CONC. P.	REIN. STEEL
269+75	10'x5'	62.9 cy	4320 lbs.

FED. ROAD STATE DIST. NO. VI. 78-C. 1930. SHEET NO. 21 OF 66



B.M. #21, S. Cor. E. Abutment Left of Sta. 269+75 Elev. 242.85

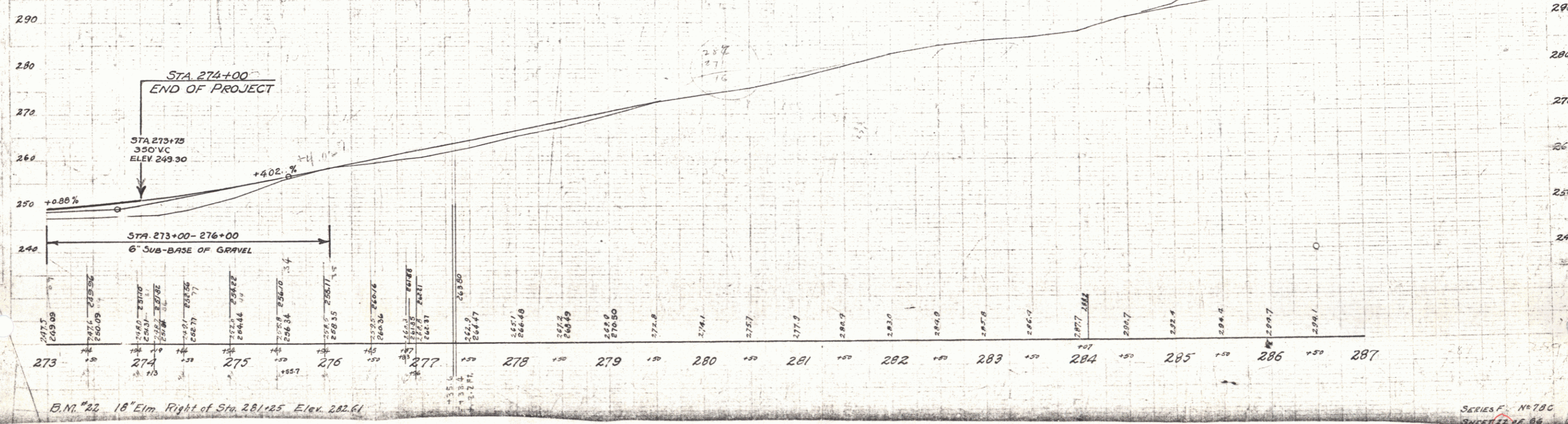
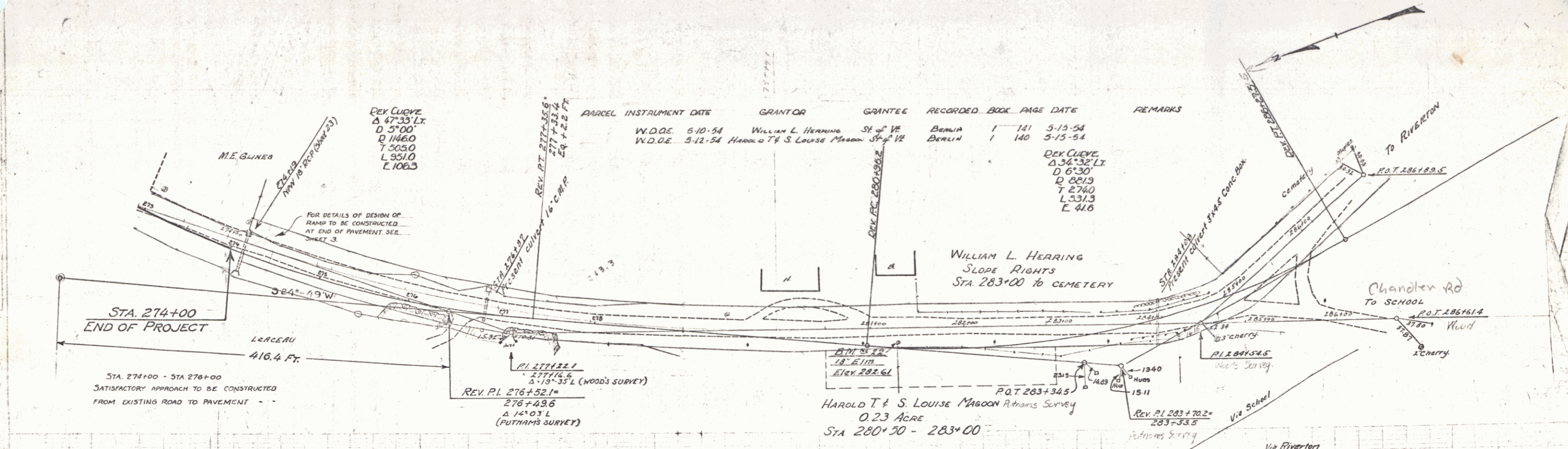
SERIES No. 78-C  
SHEET 21 OF 66

WOOD GRADE PAIL REQUIRED

CULVERT STATION	LEFT	RIGHT
274+19	24'	24'

NEW REIN. CONCRETE PIPE CULVERTS REQUIRED

STATION	DIAM.	LENG.	CONC. A	CONC. B	REIN. STEEL
274+19	18"	40'	1500	—	5# 1/2"



B.M. #22 18" Elm. Right of Sta. 281+25 Elev. 282.61

SERIES F - No 78C SHEET 12 OF 66