

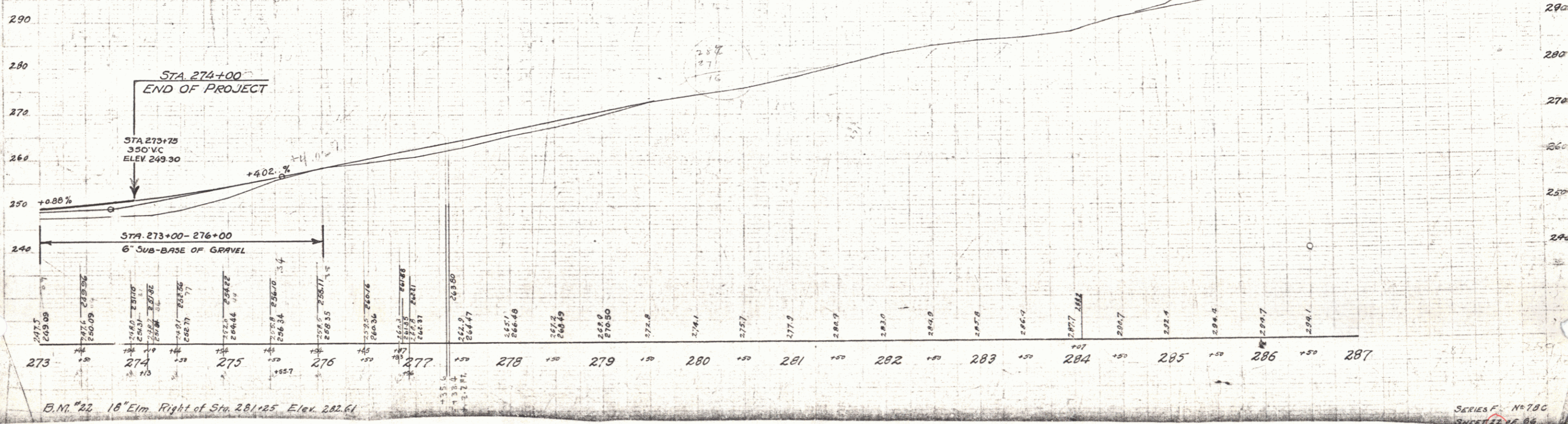
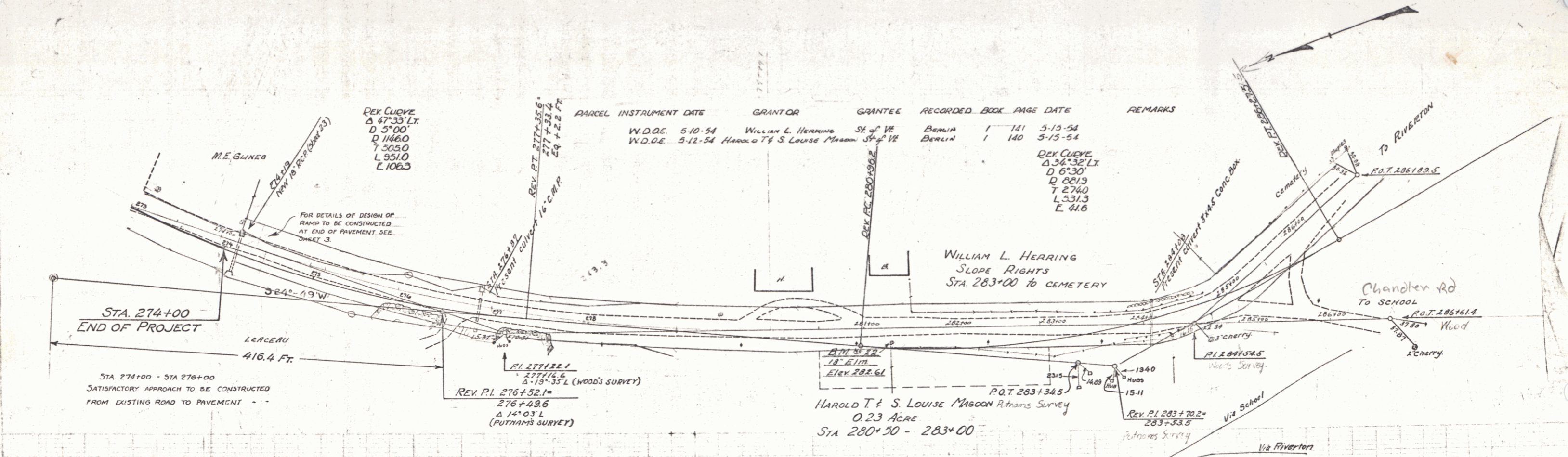
WOOD GRADE PAIL REQUIRED

CULVERT STATION	LEFT	RIGHT
274+19	24'	24'

NEW REIN. CONCRETE PIPE CULVERTS REQUIRED

STATION	DIAM.	LENG.	CONC. A	CONC. B	REIN. STEEL
274+19	18"	40'	1500	—	5# 1/2"

FED. ROAD DIST. NO.	STATE	FED. AID PROJ. NO.	SHEET NO.	TOTAL SHEETS
9	VT.	78-C-7930	22	66



B.M. #22 18" Elm. Right of Sta. 281+25 Elev. 282.61

SERIES F - No 78C
SHEET 22 OF 66