

WOOD GUARD RAIL REQUIRED

CULVERT STATION	LEFT	RIGHT
258+95	24'	24'

CABLE GUARD RAIL REQUIRED

STATIONS	LEFT	RIGHT
269+48 - 270+12	64'	
269+00 - 270+12		112'

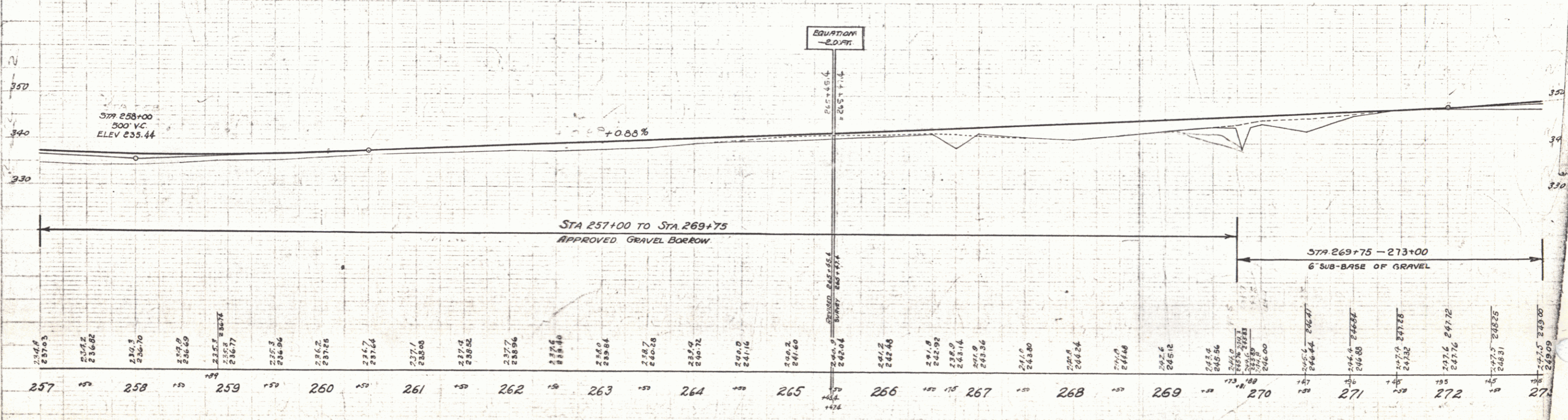
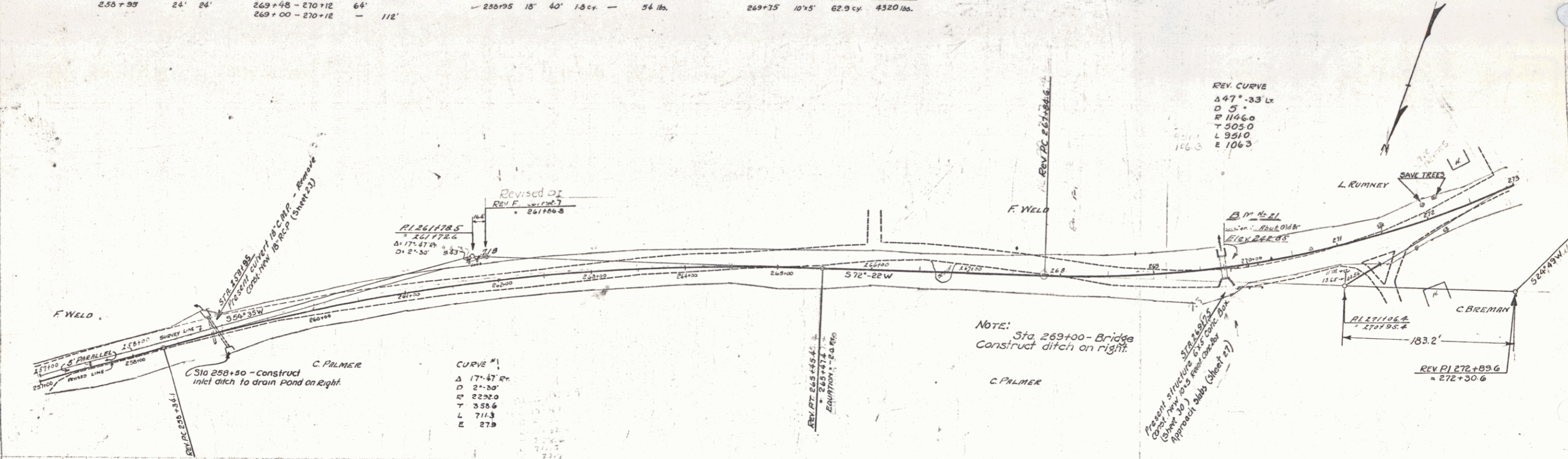
NEW REIN. CONCRETE PIPE CULVERTS REQUIRED

STATION	DIAM.	LENG.	CONC. P.	CONC. C.	REIN. STEEL
258+95	18" 40'	1.0 cy			54 lbs.

NEW REIN. CONCRETE BOX CULVERTS REQUIRED

STATION	SIZE	CONC. P.	REIN. STEEL
269+75	10'x5'	62.9 cy	4320 lbs.

FED. ROAD STATE DIST. NO. VI. 78-C. 1930. SHEET NO. 21 OF 66



PLAN
1929
1829

1929
1829

B.M. #21 3. Cor. E. Abutment Left of Sta. 269+75 Elev. 242.85

SERIES No. 78C
SHEET 21 OF 66