

WOOD GUARD RAIL REQUIRED

CULVERT STATION	LEFT	RIGHT
214+00	-	24'
216+00	24'	24'
221+42	-	24'

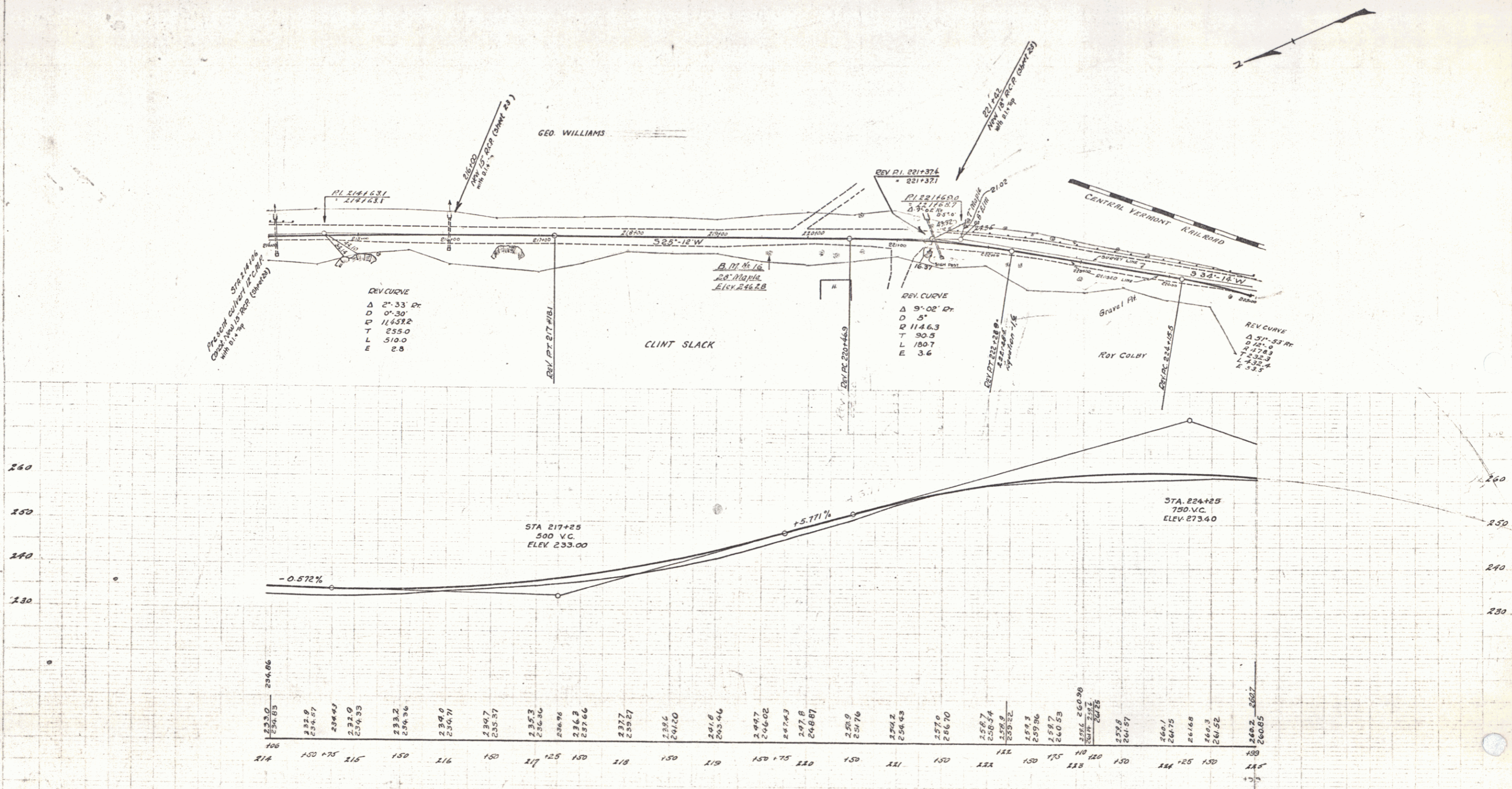
CABLE GUARD RAIL REQUIRED

STATIONS	LEFT	RIGHT
214+00 - 214+15	-15'	-
220+80 - 224+00	-400'	-

NEW REINFC CONCRETE PIPE CULVERTS REQUIRED

STA.	DIM'S	LENG.	CONC. A.	CONC. C.	REINFC-STEEL	D.I.	APPROX. TOP
214+06	15' 40"	2.3 cy	-	104 lbs.	1	1	
216+07	15' 36"	2.3 cy	-	104 lbs.	1	1	
221+42	15' 48"	2.3 cy	-	104 lbs.	1	1	

STATE PROJECT NO. 76-C-1950  
SHEET NO. 16 OF 66



B.M. #16 28' Maple T Right of Sta. 219+5.7 Elev. 246.28

SERIES F N78C  
SHEET 16 OF 66