

WOOD GUARD RAIL REQUIRED		
CULVERT STATION	LEFT	RIGHT
V 157+34	-	24'
V 154+62	24'	24'

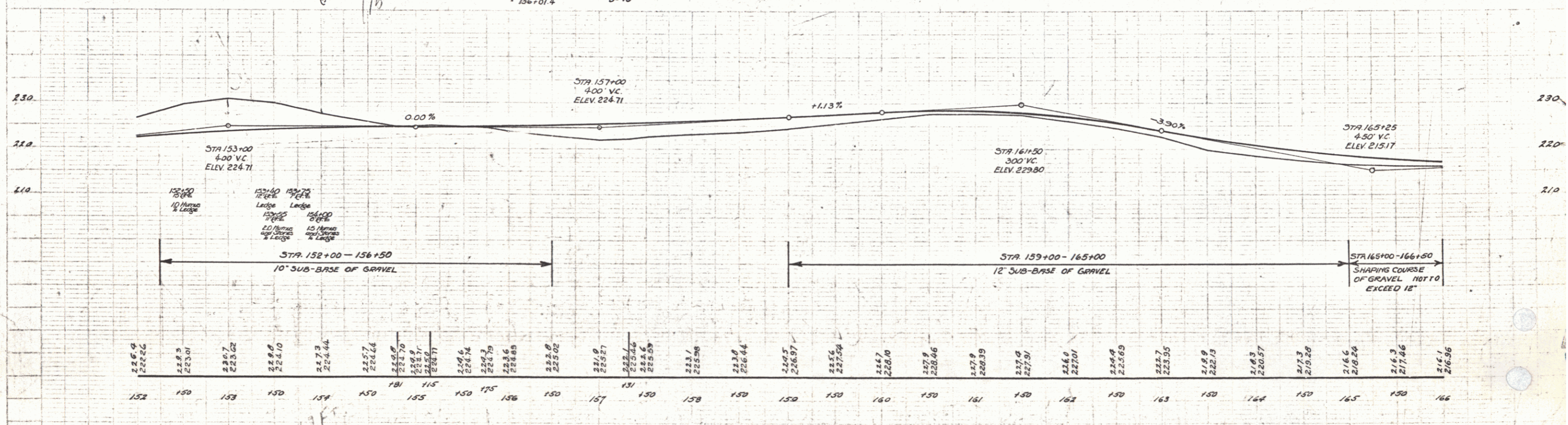
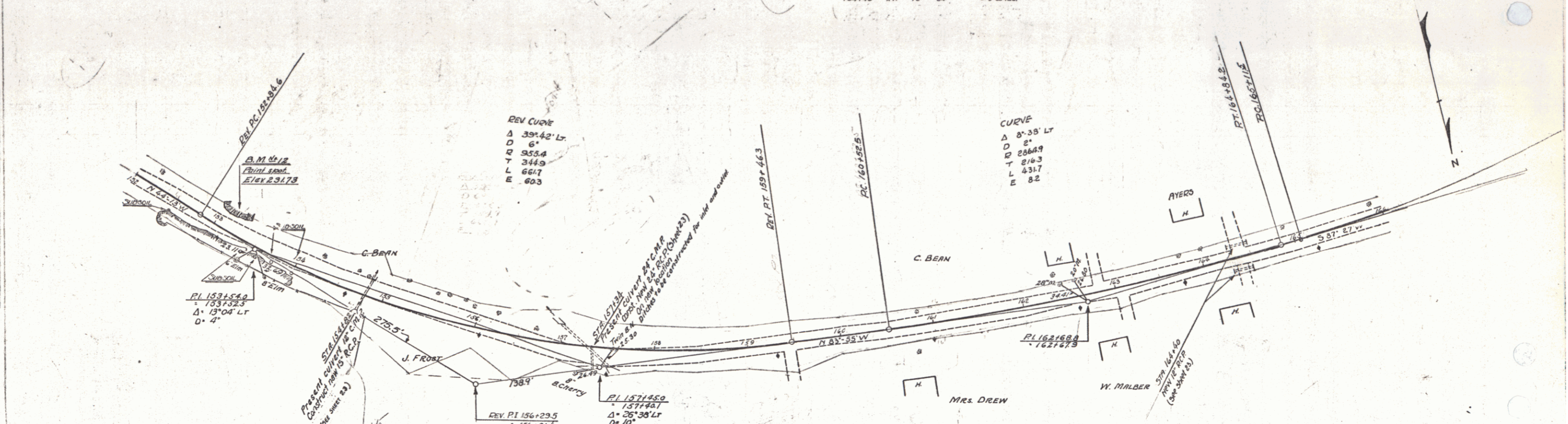
CABLE GUARD RAIL REQUIRED		
STATIONS	LEFT	RIGHT
156+50-157+46	36'	-

NEW REIN CONCRETE PIPE CULVERTS REQUIRED				
STATION	DIAM	LENS	CONC	REIN STEEL
157+34	24"	76'	2.4cv	54 lbs.
154+62	18"	48'	1.0cv	54 lbs.

DRIVEWAY PIPE CULVERTS REQUIRED				
STATION	DIAM	LENS	CEMENT	CURABLE MASONRY
164+40	12"	24'	23	ON HUB.
164+40	12"	24'	23	ON HUB.

FIELD NO. STATE PROJ. NO. FISCAL YEAR SHEET TOTAL
 75-C 1936 66

1937
 1938
 1939
 1940
 1941
 1942
 1943
 1944
 1945
 1946
 1947
 1948
 1949
 1950
 1951
 1952
 1953
 1954
 1955
 1956
 1957
 1958
 1959
 1960
 1961
 1962
 1963
 1964
 1965
 1966
 1967
 1968
 1969
 1970
 1971
 1972
 1973
 1974
 1975
 1976
 1977
 1978
 1979
 1980
 1981
 1982
 1983
 1984
 1985
 1986
 1987
 1988
 1989
 1990
 1991
 1992
 1993
 1994
 1995
 1996
 1997
 1998
 1999
 2000



B.M. #12 Faint spot on ledge Left of Sta. 153+20 Elev. 231.73

SERIES F No 78C
 SHEET 18 OF 66