

FD ROAD DIST. NO.	STATE	PROJ. NO.	FISCAL YEAR	SHEET NO.	TOTAL SHEETS
9	VI.	78-C	1950	9	66

WOOD GUARD RAIL REQUIRED

CULVERT STATION	LEFT	RIGHT
74+36	24'	24'
75+25	24'	24'
86+47	24'	-

CABLE GUARD RAIL REQUIRED

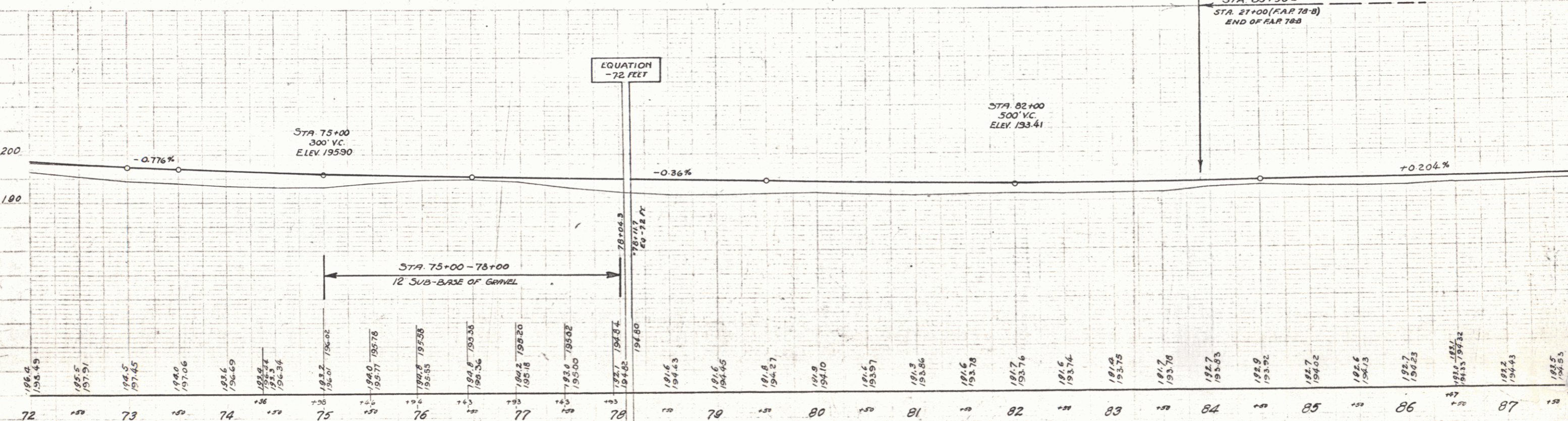
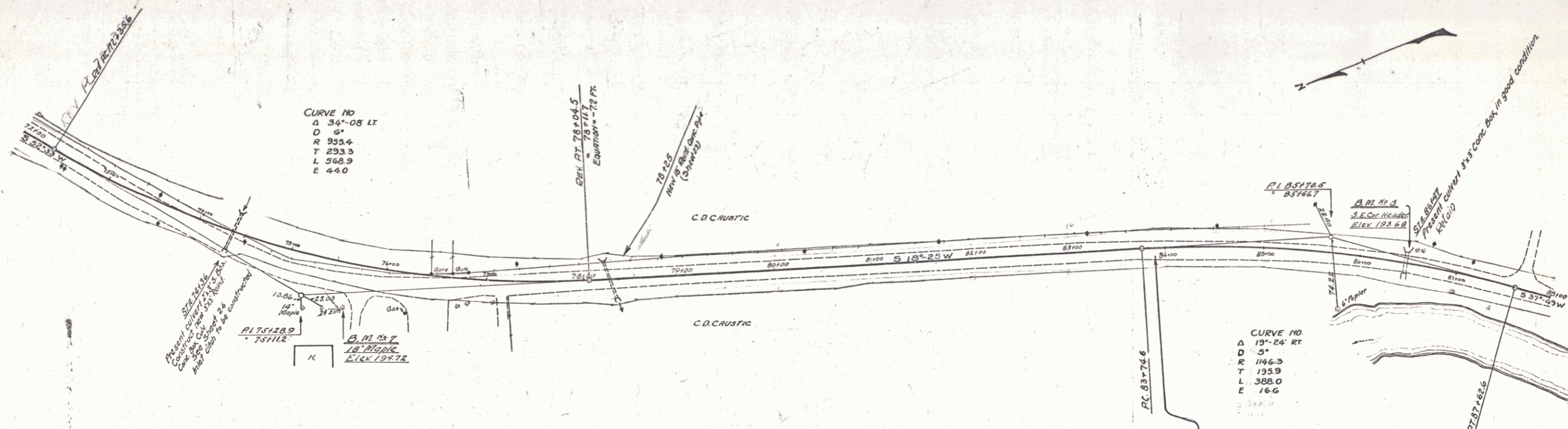
STATIONS	LEFT	RIGHT
86+04-87+00	-	96'

NEW REIN. CONCRETE PIPE CULVERTS REQUIRED

STATION	DIAM.	LENG.	CONC. A	CONC. C	REIN. STEEL
78+25	18"	40'	18 cy	-	54 lbs.

NEW REIN. CONCRETE BOX CULVERTS REQUIRED

STATION	SIZE	CONC. A	REIN. STEEL
74+36	3'x3'	18.2 cy	1216 lbs.



B.M. #7 18" Maple @ Right of Sta. 75+65 Elev. 194.72  
 B.M. #8 S.E. Cor. Conc. Header @ Left of Sta. 86+47 Elev. 193.68

SERIES F  
 SHEET 9