

CABLE GUARD RAIL REQUIRED

STATIONS	LEFT	RIGHT
26+42-31+38	-	49G
39+50-40+00	50'	50'

NEW REINF CONCRETE PIPE CULVERTS REQUIRED

STA.	DIAM.	LENS	CONC. A	CONC. B	REIN. STEEL	DI	GUTTERS	ARREST TOP
26+70	18"	44'	29cy	-	260lbs.	2	1	1

CULVERT HEAD WALLS TO BE CONSTRUCTED

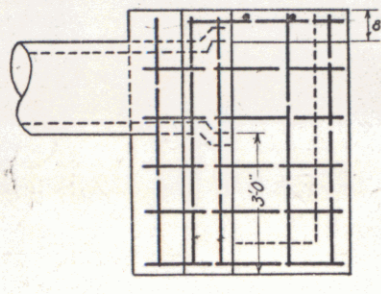
STATION	TYPE	CONC. A	REIN. STEEL
31+35	24" CMP	2.6 cy	54 lbs.
40+00	12" CMP	1.8	54

CONCRETE CURB AND GUTTER REQUIRED

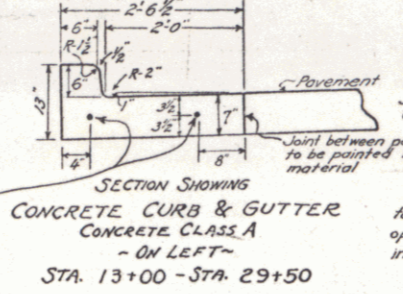
STATIONS	LEN	R	WIDTH	CURB	GUTTER	CONC. REIN.
24+00-29+50	L	2.0'	6"	36cy	409 lbs.	

DRIVEWAY PIPE CULVERTS REQUIRED

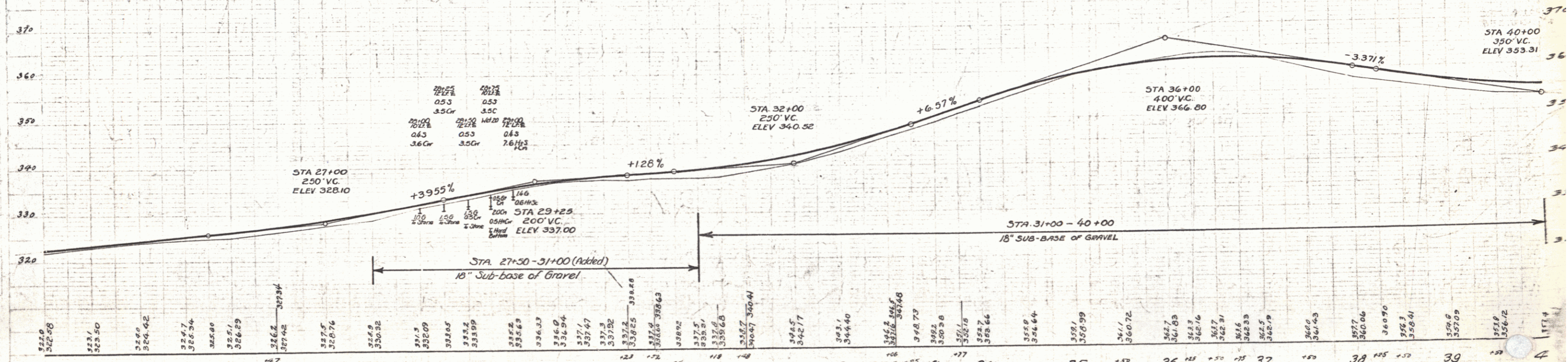
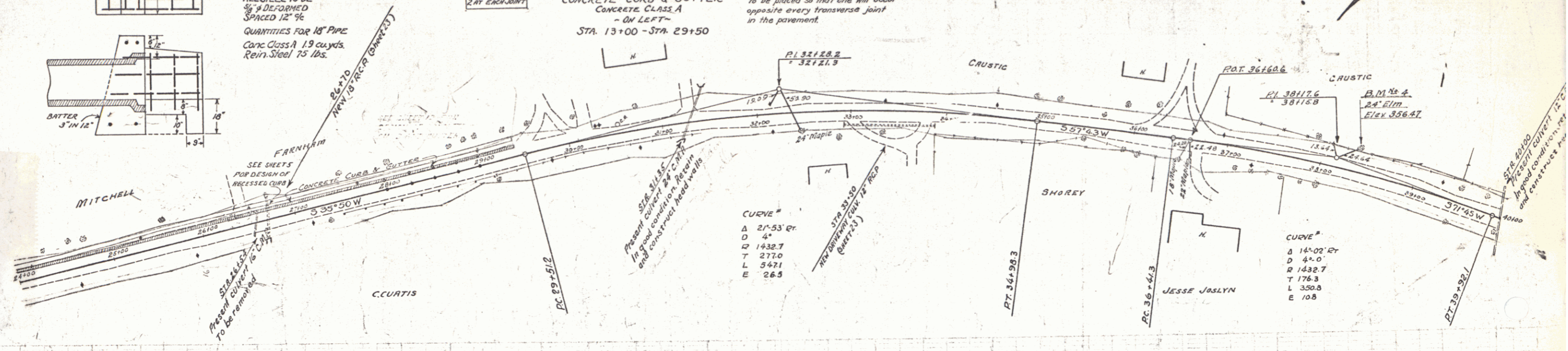
STATION	LEN	R	DIAM.	LENGTH	CEMENT PORTLAND MASONRY
33+50	A	12"	36"		23 cy



DETAIL OF CULVERT HEADWALL L-TYPE CONC. CLASS A
 ALL STEEL TO BE 3/4" DEFORMED SPACED 12" OC
 QUANTITIES FOR 18" PIPE CONC. CLASS A 19 CUBIC YDS. REIN. STEEL 15 LBS.



Note: Joints in Curb & Gutter not to exceed 8'0" apart. Promouled bituminous expansion joint filler 1/2" thick, to be placed between every 5th section (every 40'). Remaining joints to be either butt joints painted with bituminous material or cut plate joints.
 Joints in Curb & Gutter section to be placed so that one will occur opposite every transverse joint in the pavement.



B.N. #4 24' Elmlet of Sta 38+38 Elev. 356.47

STATION	ELEVATION
24	322.0
25	323.50
26	324.42
27	324.7
28	325.34
29	325.80
30	326.29
31	326.8
32	327.42
33	327.9
34	328.5
35	329.06
36	329.72
37	330.4
38	331.1
39	331.8
40	332.5

PLANS COMPLETED	REVISIONS	DATE
Sta 27+30-31+00		3/6/20
10' Sub-base of Gravel		