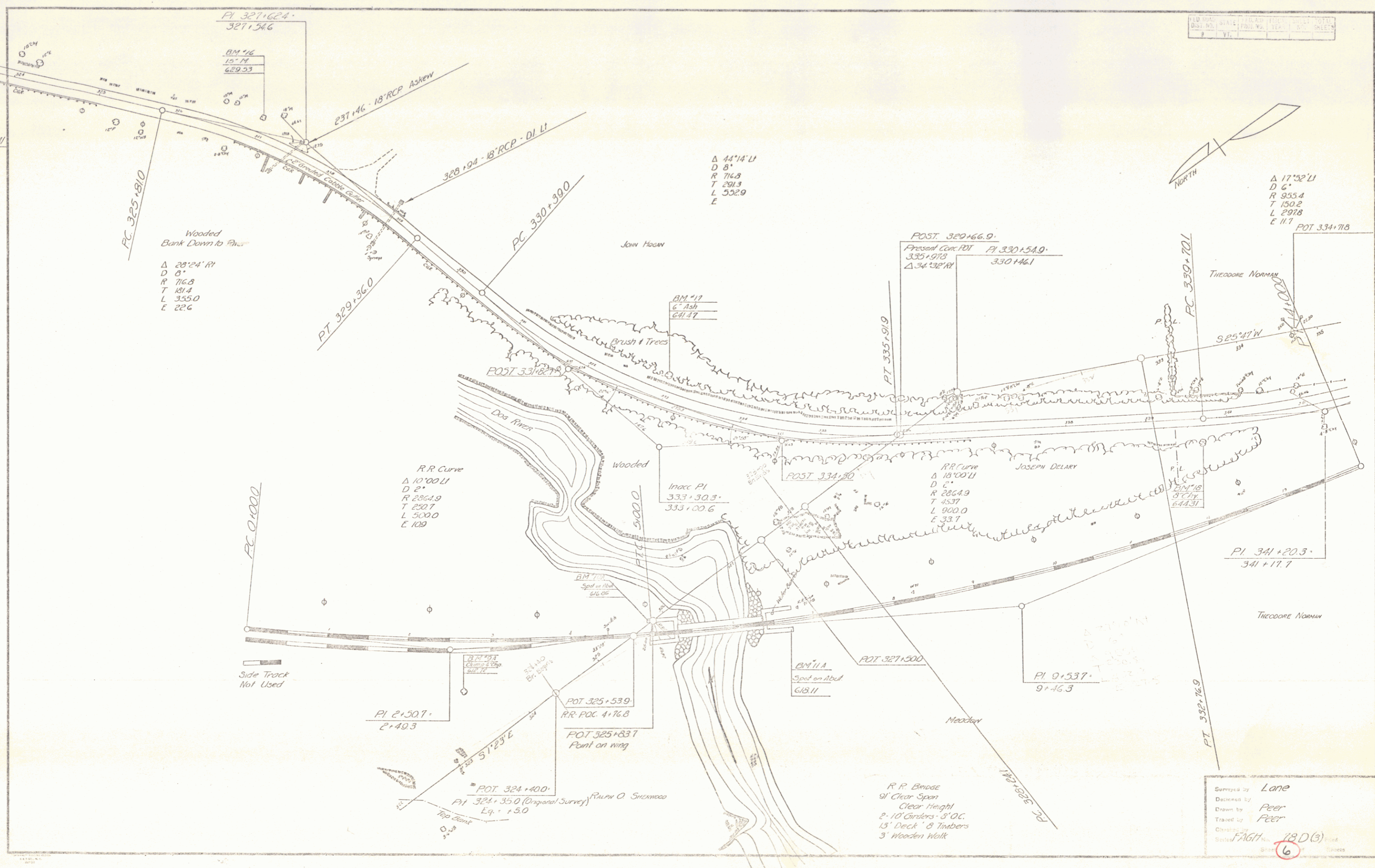


FEET	INCHES	DECIMALS	FEET	INCHES	DECIMALS
1	12	10	1	12	10
1	12	10	1	12	10



Wooded
Bank Down to River
 Δ 28°24' R
 D 8'
 R 716.3
 T 131.4
 L 3350.0
 E 22.6

Δ 44°14' L
 D 8'
 R 716.3
 T 291.3
 L 532.9
 E

Δ 17°32' L
 D 6'
 R 933.4
 T 150.2
 L 2978
 E 11.7

RR Curve
 Δ 10°00' L
 D 2'
 R 2864.9
 T 250.7
 L 5000.0
 E 109

RR Curve
 Δ 18°00' L
 D 2'
 R 2864.9
 T 453.7
 L 900.0
 E 33.7

RR Bridge
 91' Clear Span
 Clear Height
 2-10' Channels - 3' O.C.
 13' Deck - 8' Timbers
 3' Wooden Walk

Surveyed by Lane
 Drawn by Peer
 Traced by Peer
 Checked by F.A.H. 18D(3)
 Scale 6