

INDEX OF SHEETS

Index of Sheets

- 1 Title Sheet
- 2 Typical Sections
- 3 Plan Quantity and Grading Sheet
- 4 Earthwork and Grade Sheet
- 5-8 Layouts and Profile Sheet
- 9-23 Cross Sections

STATE OF VERMONT  
DEPARTMENT OF HIGHWAYS



Pin# 99R 995

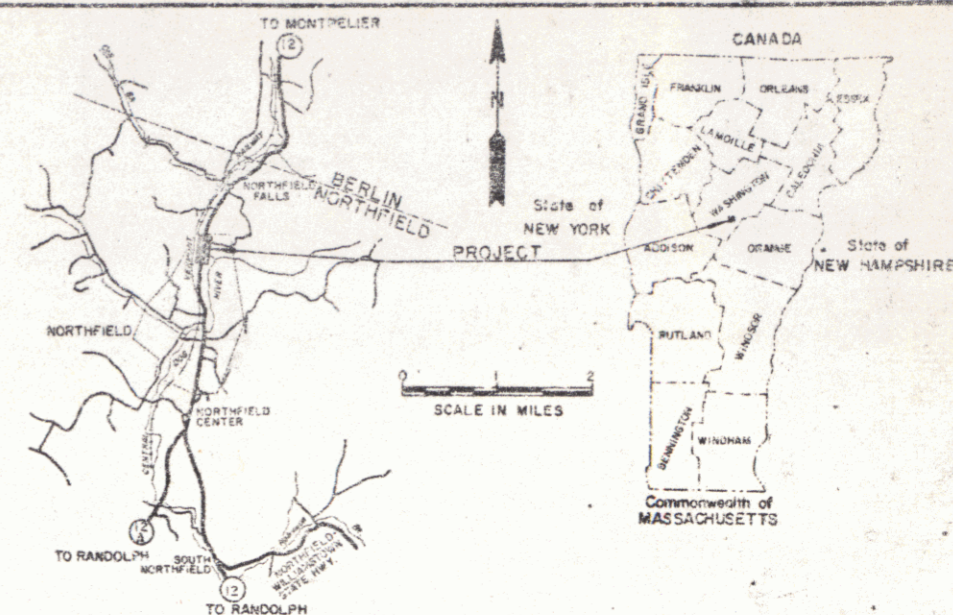
PROPOSED IMPROVEMENT  
**TOWN OF NORTHFIELD**

COUNTY OF WASHINGTON  
MONTPELIER-RANDOLPH ROAD  
VT. RTE. 12

BEGINNING AT A POINT APPROXIMATELY 0.729 MILES  
SOUTHERLY OF THE BERLIN-NORTHFIELD TOWN LINE  
AND EXTENDING 0.341 MILES NORTHERLY.

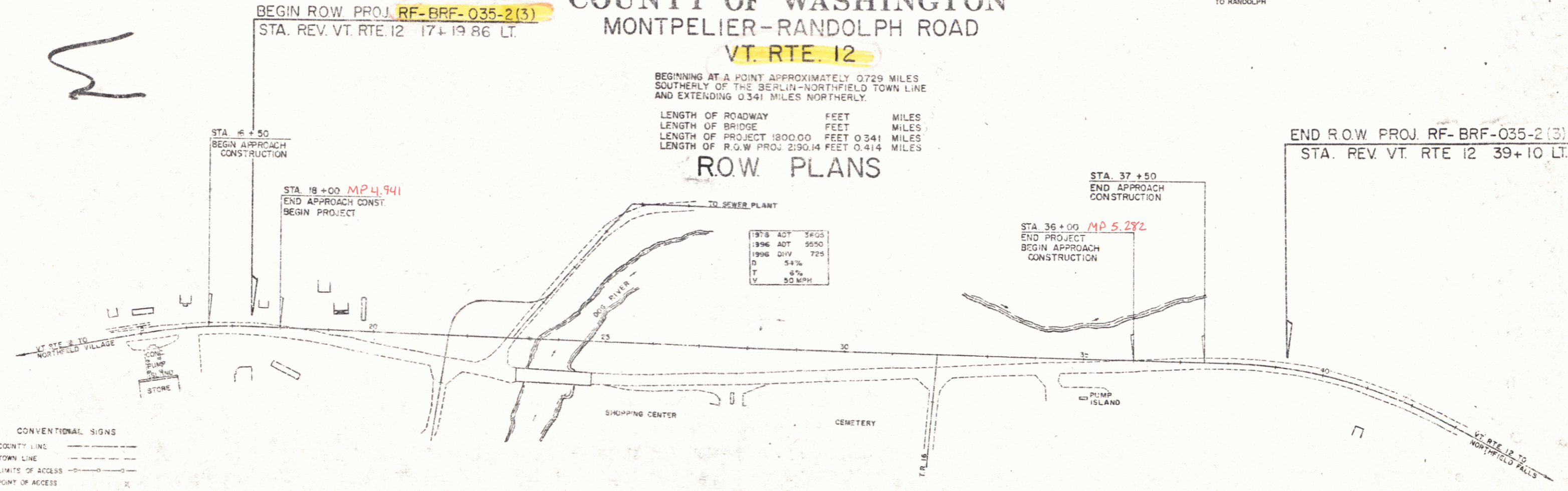
LENGTH OF ROADWAY	FEET	MILES
LENGTH OF BRIDGE	FEET	MILES
LENGTH OF PROJECT	1800.00 FEET	0.341 MILES
LENGTH OF R.O.W PROJ	2190.14 FEET	0.414 MILES

R.O.W. PLANS



BEGIN ROW PROJ. RF-BRF-035-2(3)  
STA. REV. VT. RTE. 12 17+19.86 LT.

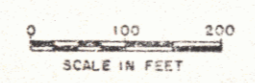
END R.O.W. PROJ. RF-BRF-035-2(3)  
STA. REV. VT. RTE. 12 39+10 LT.



1978 ADT	3605
1996 ADT	9550
1996 DIV	725
D	54%
T	6%
V	50 MPH

CONVENTIONAL SIGNS

- COUNTY LINE
- TOWN LINE
- LIMITS OF ACCESS
- POINT OF ACCESS
- FENCE LINE
- STONE WALL
- TRAVELED WAY
- QUAD RAIL
- RAILROAD
- SURVEY LINE
- CULVERT
- POWER POLE
- TELEPHONE POLE
- TREES
- F.A. CONST. IDENTIFICATION SIGNS
- PROPERTY LINE
- R.O.W. TAKING LINE
- SLOPE RIGHTS
- TOP OF DUT
- TOE OF SLOPE



These plans are subject to such engineering changes as may be required by the Federal Highway Administration or the Chief Engineer.  
Construction is to be carried on in accordance with these plans and the Standard Specifications for Highway and Bridge Construction dated January 3, 1972 as approved by the Federal Highway Administration on December 25, 1971 for use on this project, including all subsequent revisions and such revised specifications and special provisions as are incorporated in these plans.

SUBMITTED BY ORDER OF THE STATE HIGHWAY BOARD

APPROVED *[Signature]* 1-5-76  
CHIEF ENGINEER

DEPARTMENT OF TRANSPORTATION  
FEDERAL HIGHWAY ADMINISTRATION

APPROVED \_\_\_\_\_ DATE \_\_\_\_\_  
DIVISION ENGINEER

PROJECT RF-BRF NO. 035-2(3)  
SHEET 1 OF 7 SHEETS

APPROVED *[Signature]*  
R.O.W. DIRECTOR  
DATE 1-5-76

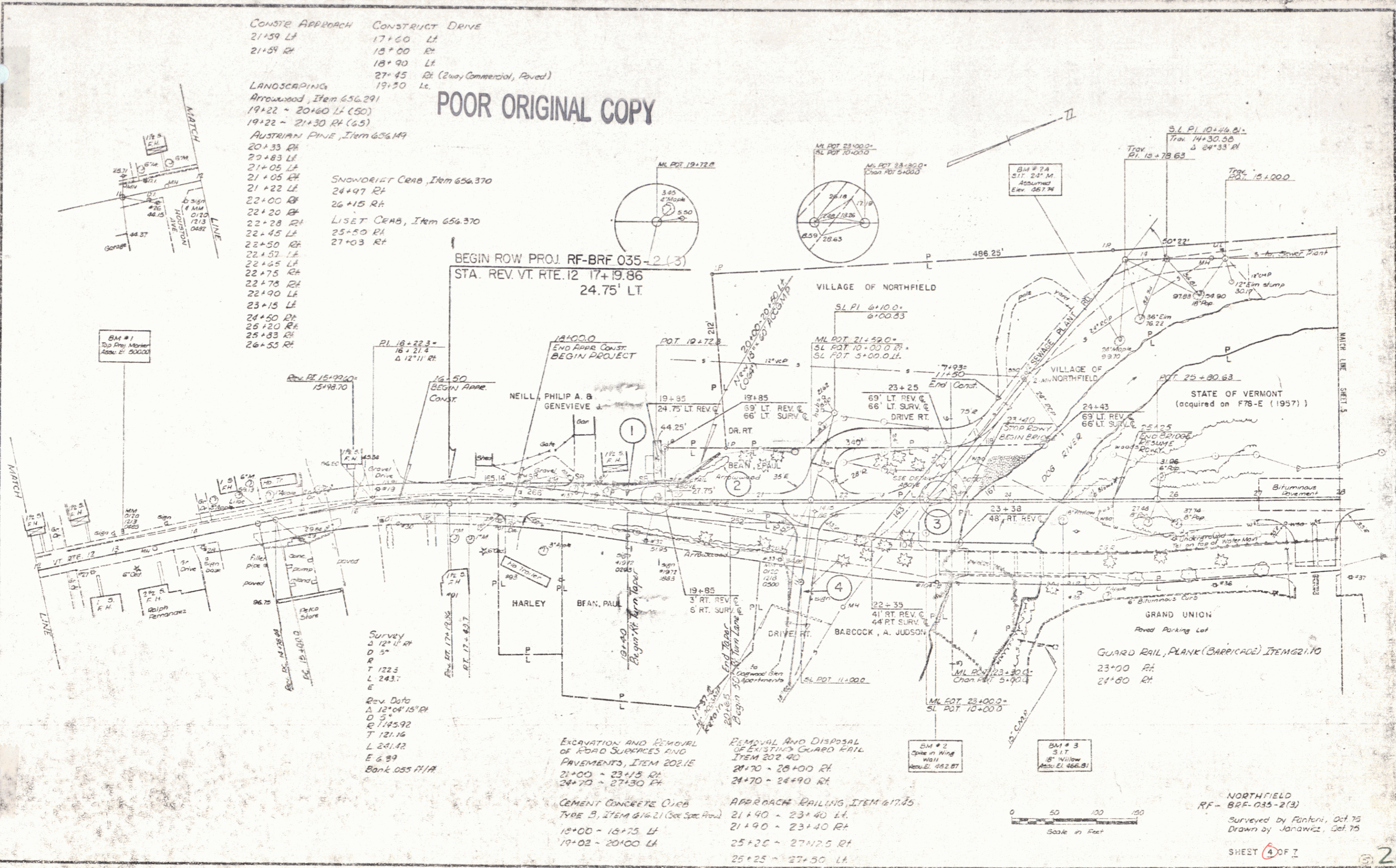
913 12-19-76

CONSTE APPROACH CONSTRUCT DRIVE  
 21+59 LF 17+60 LT  
 21+59 RT 18+00 RT  
 18+90 LT  
 27+45 RT (2way, Commercial, Paved)  
 19+50 LT

LANDSCAPING  
 Arrowwood, Item 656.291  
 19+22 ~ 20+60 LT (50)  
 19+22 ~ 21+30 RT (65)  
 AUSTRIAN PINE, Item 656.149

POOR ORIGINAL COPY

SNOWDRIFT CURB, Item 656.370  
 24+97 RT  
 26+15 RT  
 LISET CURB, Item 656.370  
 25+50 RT  
 27+03 RT



BEGIN ROW PROJ. RF-BRF 035-2(3)  
 STA. REV. VT. RTE. 12 17+19.86  
 24.75' LT

EXCAVATION AND REMOVAL  
 OF ROAD SURFACES AND  
 PAVEMENTS, ITEM 202.1E  
 21+00 ~ 23+15 RT  
 24+70 ~ 27+30 RT

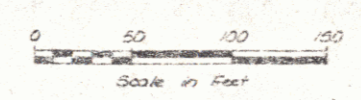
REMOVAL AND DISPOSAL  
 OF EXISTING GUARD RAIL  
 ITEM 202.4D  
 21+70 ~ 26+00 RT  
 24+70 ~ 24+90 RT

CEMENT CONCRETE CURB  
 TYPE B, ITEM 616.21 (See Spec. Prov.)  
 18+00 ~ 18+75 LT  
 19+02 ~ 20+00 LT

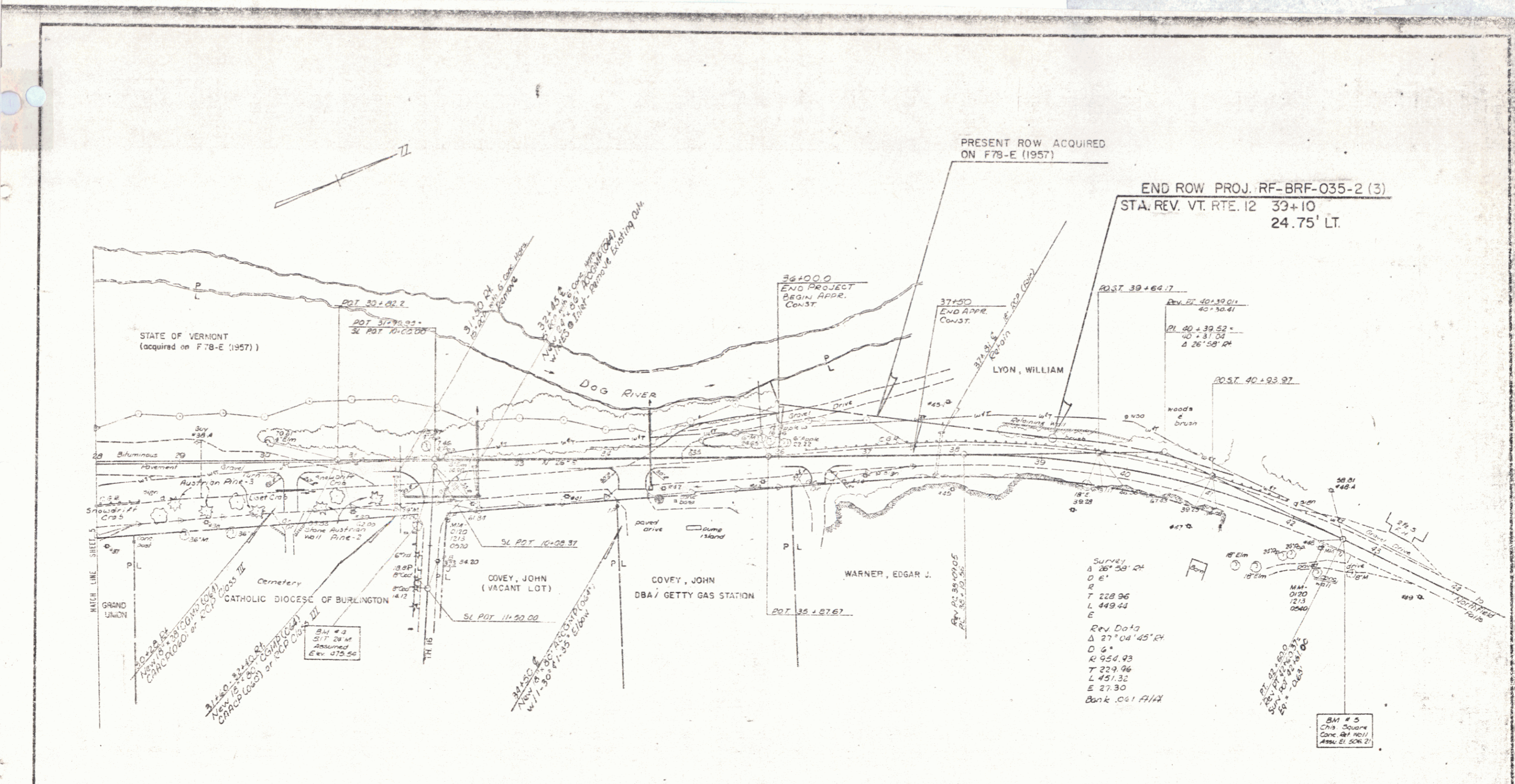
APPROACH RAILING, ITEM 617.35  
 21+40 ~ 23+40 LT  
 21+90 ~ 23+40 RT  
 25+20 ~ 27+25 RT  
 25+25 ~ 27+50 LT

Survey  
 S 12° 14' RT  
 D 5'  
 T 122.3  
 L 243.7  
 E

Rev. Data  
 A 12° 04' 15" RT  
 D 5'  
 Q 1745.92  
 T 121.16  
 L 241.42  
 E 6.89  
 Bank 0.55 H/A



NORTHFIELD  
 RF-BRF-035-2(3)  
 Surveyed by Fichter, Oct. 75  
 Drawn by Janawicz, Oct. 75  
 SHEET 4 OF 1



END ROW PROJ. RF-BRF-035-2 (3)  
 STA. REV. VT. RTE. 12 39+10  
 24.75' LT.

SURVEY  
 Δ 26° 58' 24"  
 D 6'  
 R  
 T 228.96  
 L 449.44  
 E  
 Rev Data  
 Δ 27° 04' 45" R  
 D 6'  
 R 954.93  
 T 229.96  
 L 451.32  
 E 27.30  
 Bank cut 1/14

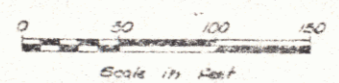
LANDSCAPING  
 AUSTRIAN PINE, ITEM 656.149  
 28+93 RT  
 29+30 RT  
 29+91 RT  
 30+43 RT  
 31+25 RT  
 SNOWBIRT CRAB, ITEM 656.370  
 28+75 RT and 29+18 RT  
 L 1ST CRAB, ITEM 656.370  
 29+65 RT

REMOVAL AND DISPOSAL OF  
 EXISTING GUARD RAIL, ITEM 202.40  
 28+00 - 28+52 RT  
 36+30 - 37+30 LT

GUARD RAIL, THREE CABLE  
 WITH LT. STEEL POSTS, ITEM 621.21  
 31+45 - 35+93 Lt. (Drive)  
 35+20 - 37+60 Lt.

CONSTRUCT APPROACH  
 32+00 RT (TOWN RT #9)

CONSTRUCT DRIVE  
 34+30 RT (Commercial; Towed)  
 34+90 Lt.  
 36+45 RT  
 30+25 RT



NORTHFIELD  
 RF-BRF 035-2(3)  
 Surveyed by Fenton, Oct 75  
 Drawn by Janovic, Oct 75  
 SHEET 3 OF 7

3