

WOOD GUARD RAIL REQUIRED

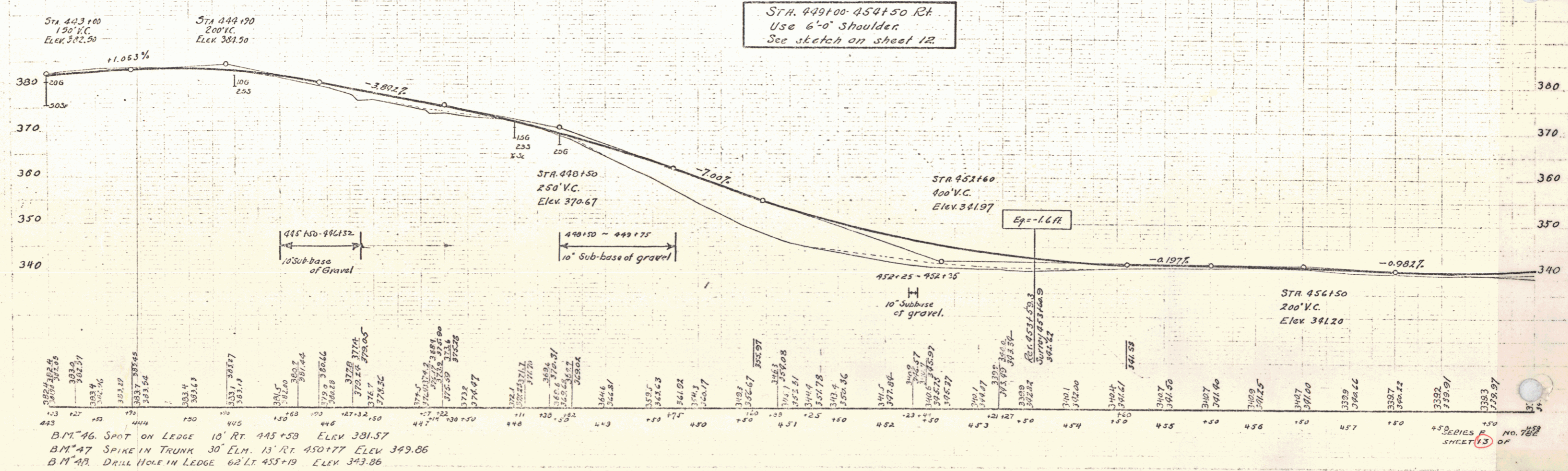
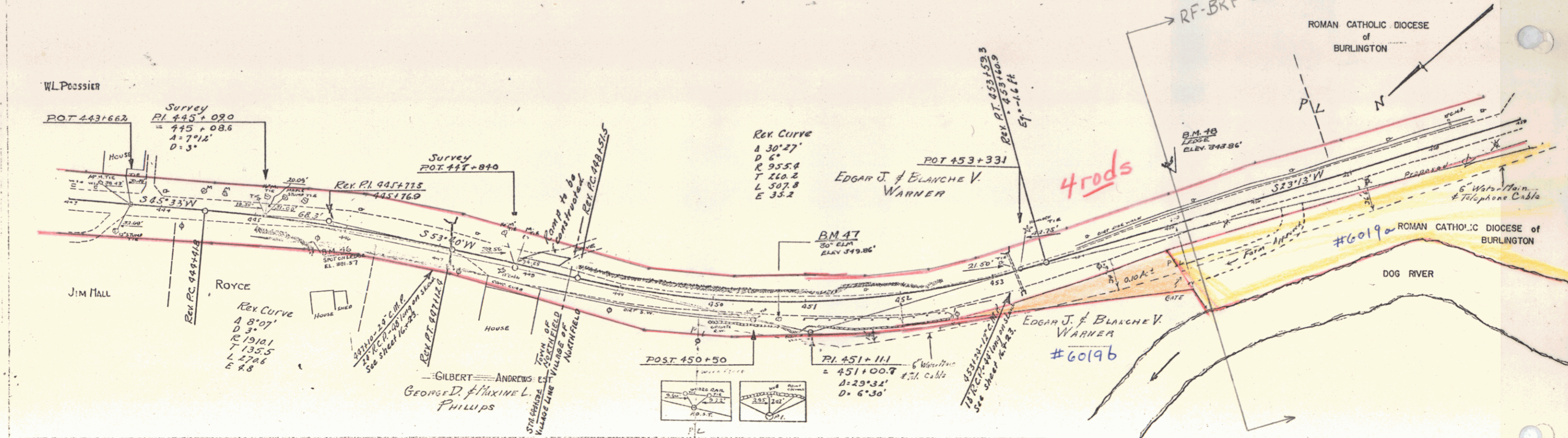
CUV STA	LI	RI
447+10	24'	24'

CABLE GUARD RAIL REQUIRED

Stations	LI	RI
449+00 - 454+50	58'	58'
453+24	98'	

RAINING CONC PIPE CONCRETS REQUIRED

Station	Diem	Leag	Conc. R.	Steel
447+10	24'	18"	24cy	54'
453+24	18"	18"	1.8	54'



B.M. 46. SPOT ON LEDGE 10' RT. 445+58 ELEV. 381.57
 B.M. 47. SPIKE IN TRUNK 30' ELM. 13' RT. 450+77 ELEV. 349.86
 B.M. 48. DRILL HOLE IN LEDGE 62' LT. 455+19 ELEV. 343.86