

WOOD GUIDE RAIL REQUIRED

Culk Sta.	LI	RI
408+25	28'	29'
410+00	29'	-
411+00	29'	-

WOOD GUIDE POSTS REQUIRED

Culk Sta.	LI	RI
412+00	1	-

GRAVEL GUARD RAIL REQUIRED

Stations	LI	RI
401+00-405+25	-	224'
407+64-411+44	-	80'

REINFORCED CONCRETE PIPE CULVERTS REQUIRED

Station	Diag.	Length	Conc. A	Conc. Steel	D/Groets
404+38	15"	20'	15 cy	157"	1
408+25	15"	48'	-	30 cy	33
414+00	15"	40'	14 cy	15 cy	116

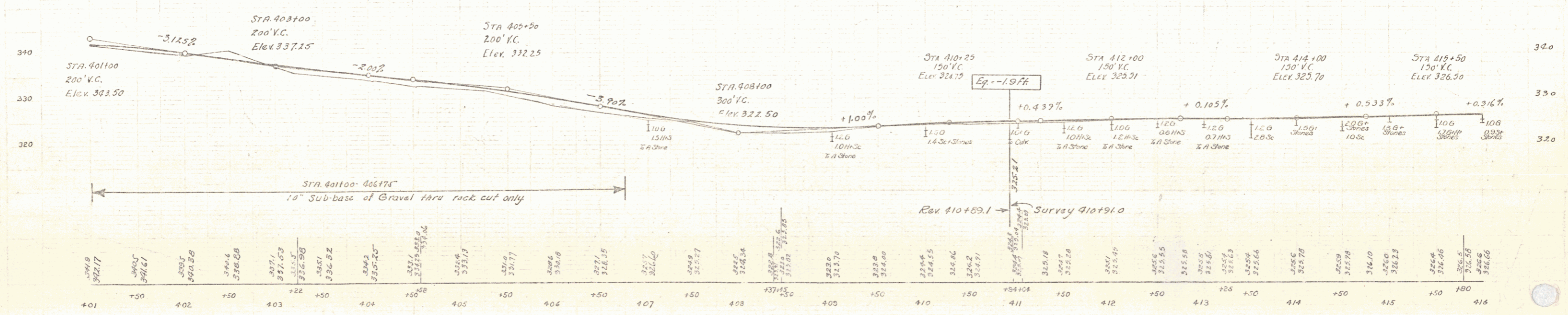
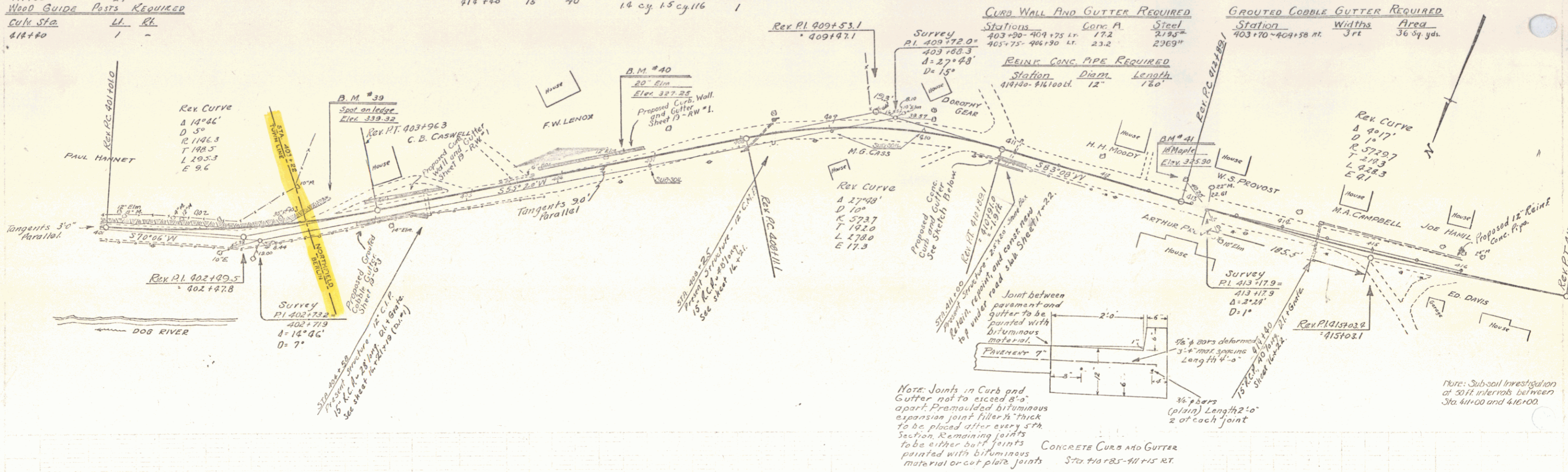
CULVERT REPAIRS REQUIRED

Station	Conc. A	Steel
411+00	3.0 cy	385"

CURB AND GUTTER REQUIRED

Station	Conc. A	Steel
410+85-411+15	3.0 cy	56"

STATE OF ILLINOIS
 DIVISION OF HIGHWAYS
 PROJECT NO. 78-E-1930 10



B.M. #39 Spot on ledge 310 ft. sta. 403+52 Elev. 339.32
 B.M. #40 Spike in roof 18" Elm 200 ft. sta. 406+71 " 327.25
 B.M. #41 " " 18" Maple 220 " " 412+84 " 325.90

SERIES F No. 78-E
 SHEET 10 OF