

WOOD GUARD RAIL REQUIRED

CULV. STA.	LT.	RT.
391175	28'	-
389+90	24'	-

CABLE GUARD RAIL REQUIRED

Stations	LT.	RT.
393115-397+00	-	388'
399100-401100	-	200'

WOOD GUIDE POSTS REQUIRED

CULV. STA.	LT.	RT.
399154	1	-

REINF. CONC. PIPE CULVERTS REQUIRED

STATIONS	DIAM.	LENGTH	CONC. A	CONC. C	STEEL RIBS
389+90	15"	34'	1.95	1.15	92
397+00	15"	45'	1.4	1.5	116
399+54	18"	32'	1.5	-	157

REINF. CONC. BOX CULVERTS REQUIRED

Station	Size	Conc. A	Steel
391+75	4x8	31.5cy	2039"

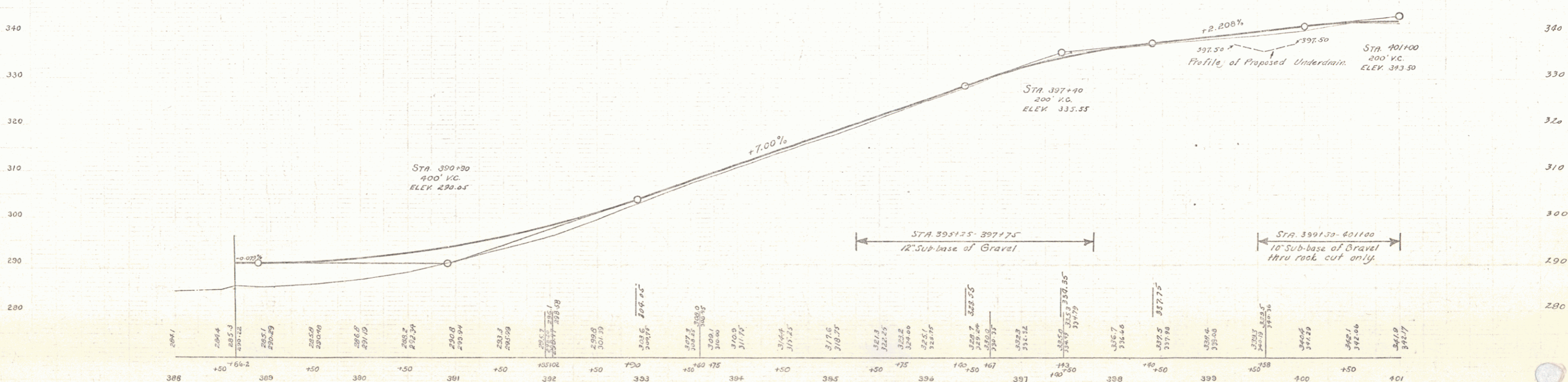
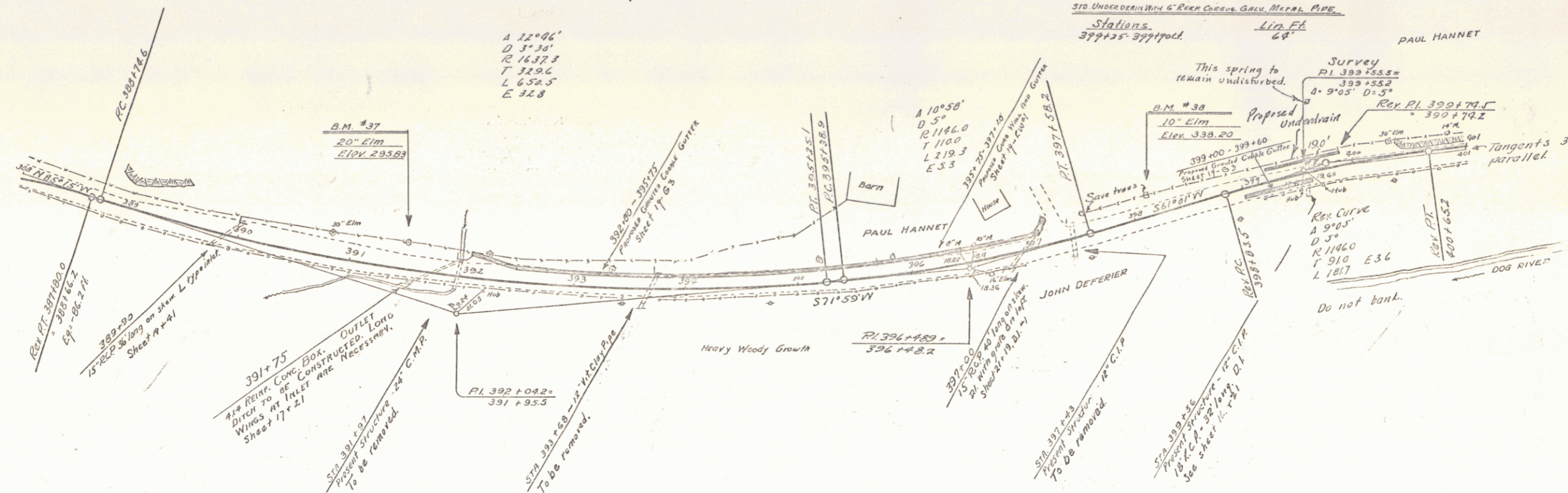
GRAVEL COBBLE GUTTER

Stations	Width	Area
392+00-395+75	3 Ft.	134.20 SQ. FT.
399+00-399160	3 Ft.	2050.902

CURB WALL AND GUTTER

Station	Conc. A	Reinf. Steel
395+75-397+00	272cy	72.4 lbs.

FOR ROAD STATE F.R.D. NO. FISCAL YEAR SHEET NO. OF SHEETS
 78-E 1930 9



B.M. #37 Spike in roof 20' Elm 2.30 ft. II. Sta 391+43 Elev 295.43
 B.M. #38 " " " 10' " 18.0 " " 398+15 " 333.20

SERIES F No. 78 E
 SHEET 9 OF