

WOOD GUARD RAIL REQUIRED

Cul. Sta.	Lt.	Rt.
371+07	28'	-

CABLE GUARD RAIL REQUIRED

Stations	Lt.	Rt.
370+10-371+20	-	80

REINFC CONG PIPE CULVERTS REQUIRED

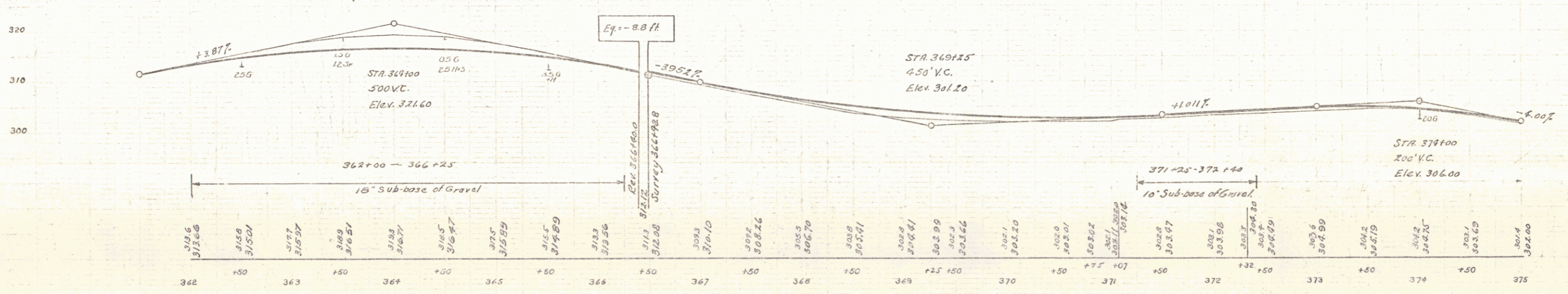
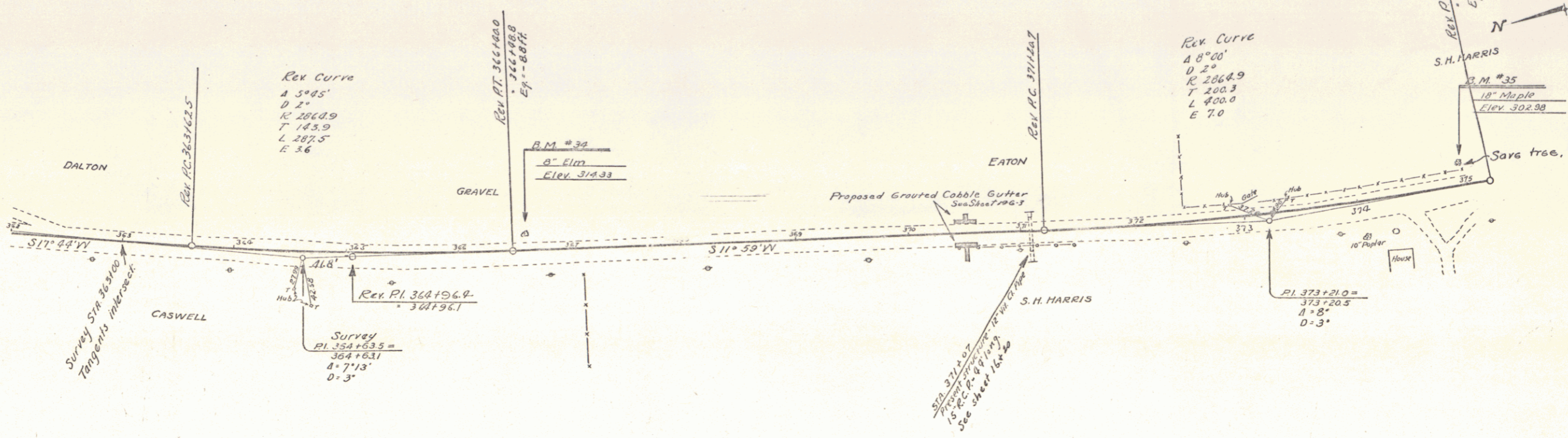
Station	Diam.	Length	Conc. Steel
371+07	15"	4'	30cy. 33'

GRAVITED COBBLE GUTTER REQUIRED

Station	Width	Area
370+50 to 371+00	3'-0"	203 sq. yds.

18" MAPLE
Elev. 302.98

70-E 1930 7



B.M. #34 Spike in roof 8" Elm 13.0 ft. H. Sta. 366+59 Elev. 314.33
 B.M. #35 " " 18" Maple 20.0 ft. H. Sta. 374+93 " 302.98

SERIES F No. 78-E
 SHEET 7 OF 7