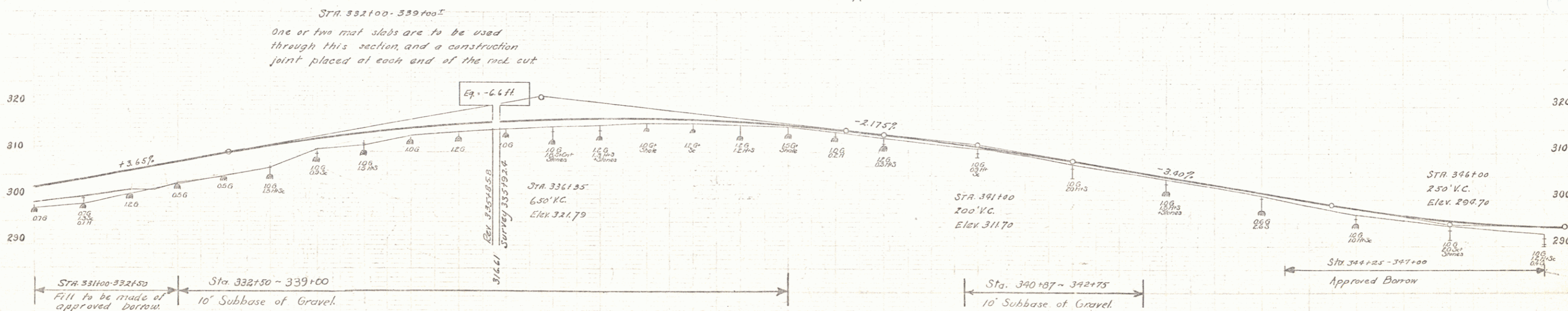
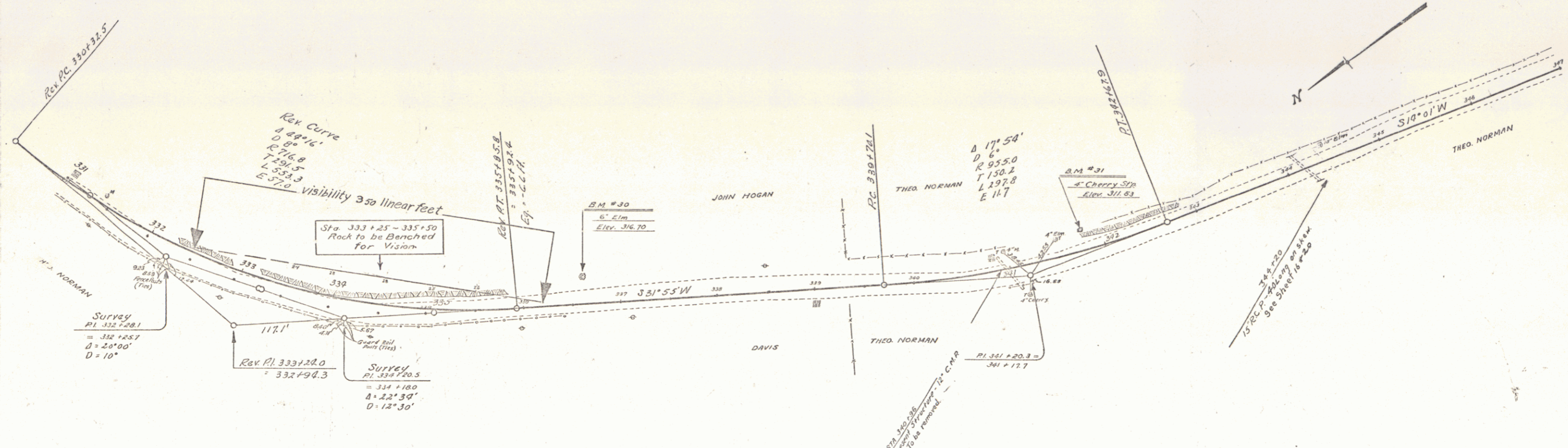


WOOD GUARD RAIL REQUIRED
 CULV STA. LH. RH.
 334+20 28' 20'

CABLE GUARD RAIL REQUIRED
 Stations LH. RH.
 331+00-336+96 - 596'

REIN. CONC. PIPE CULV. REQUIRED
 STA. CULV. LENGTH CONC. PIPE
 344+20 15' 40' 30' by 33"

FIELD NO. 78-E 1930 S



331	332	333	334	335	336	337	338	339	340	341	342	343	344	345	346	347
126	132	170	175	150	150	150	150	150	150	150	150	150	150	150	150	150

B.M. #30 Spike in root 6" Elm 26.5 ft. ll. Sta. 335+62. Elev. 316.70
 B.M. #31 4" Cherry Skimp 19.0 ft. ll. Sta. 341+77. Elev. 311.53

SERIES F No. 78-E
 SHEET 3 OF 5