

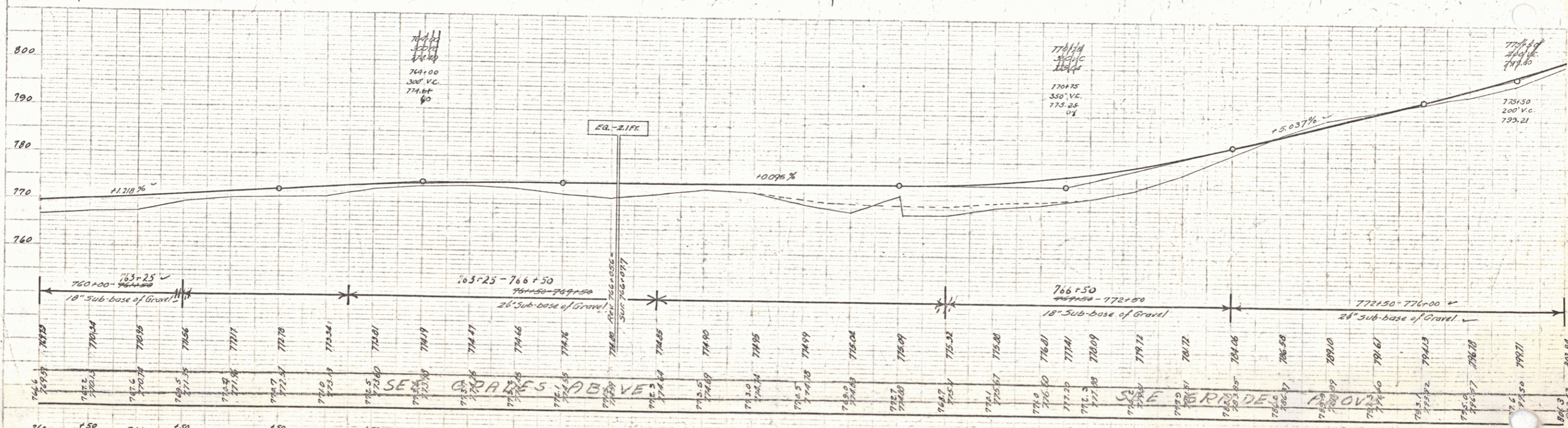
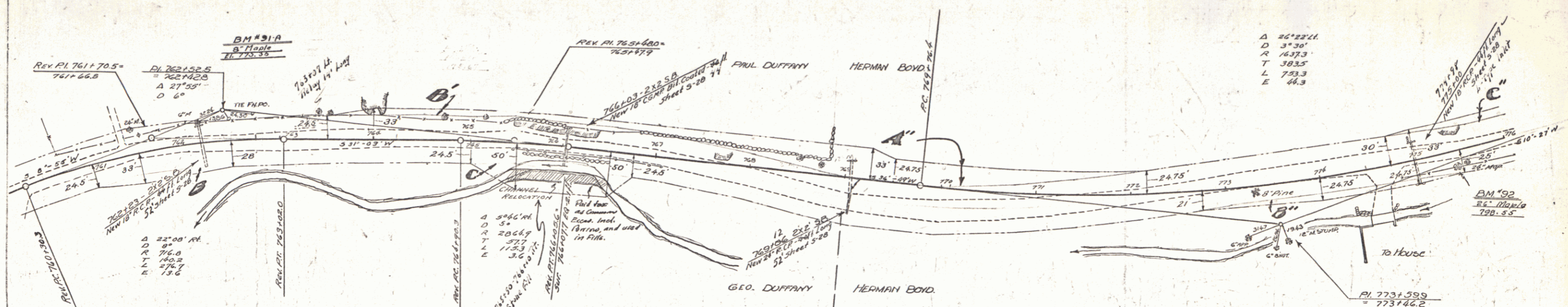
Parcel	Kind of	Date of	Grantor	Grantee	Record	Remarks
A.B.C.	Q.C.D.	8-28-33	J. Geo. & Lina B. Duffany	J. Geo. & Lina B. Duffany	22 471	10-14-33
A.B.	Q.C.D.	8-30-33	R.D. Duffany	"	22 470	10-14-33
A.B.C.	Q.C.D.	8-29-33	Herman O. Boyd	"	22 479	1-12-34

Note -  
754+00 - 769+50 Boulders encountered  
in excavation to be used in Rock Fill  
At 765+00 - 767+00  
Stone fill 765+00 - 767+00 non pay item

EAP 740			
STA.	STA.	RT.	LT.
761+83	763+53	16B	
764+03		40	
772+24	772+48	24	

EAP 740			
STA.	RT.	LT.	
760+30.1	1		
762+23	1		
766+03	1		
769+06	1		
774+30	1		
775+00	1		

REV.	BY	DATE	DESCRIPTION
1	VT	7-5-0	1756
2	VT	7-5-0	17
3	VT	7-5-0	22



760+00 183+25  
18" sub-base of Gravel

763+25 - 766+50  
24" sub-base of Gravel

766+50 - 772+50  
18" sub-base of Gravel

772+50 - 776+00  
24" sub-base of Gravel

760 150 761 150 762 150 763 150 764 150 765 150 766 150 767 150 768 150 769 150 770 150 771 150 772 150 773 150 774 150 775 150 776

B.M. No. 91A Spike in root of B Maple, left of Sta. 762+75 Elev. 775.36  
B.M. No. 92 Spike in root of 26 Maple, right of Sta. 775+50 Elev. 798.55

SERIES FAP NO 796  
SHEET 17 OF 22