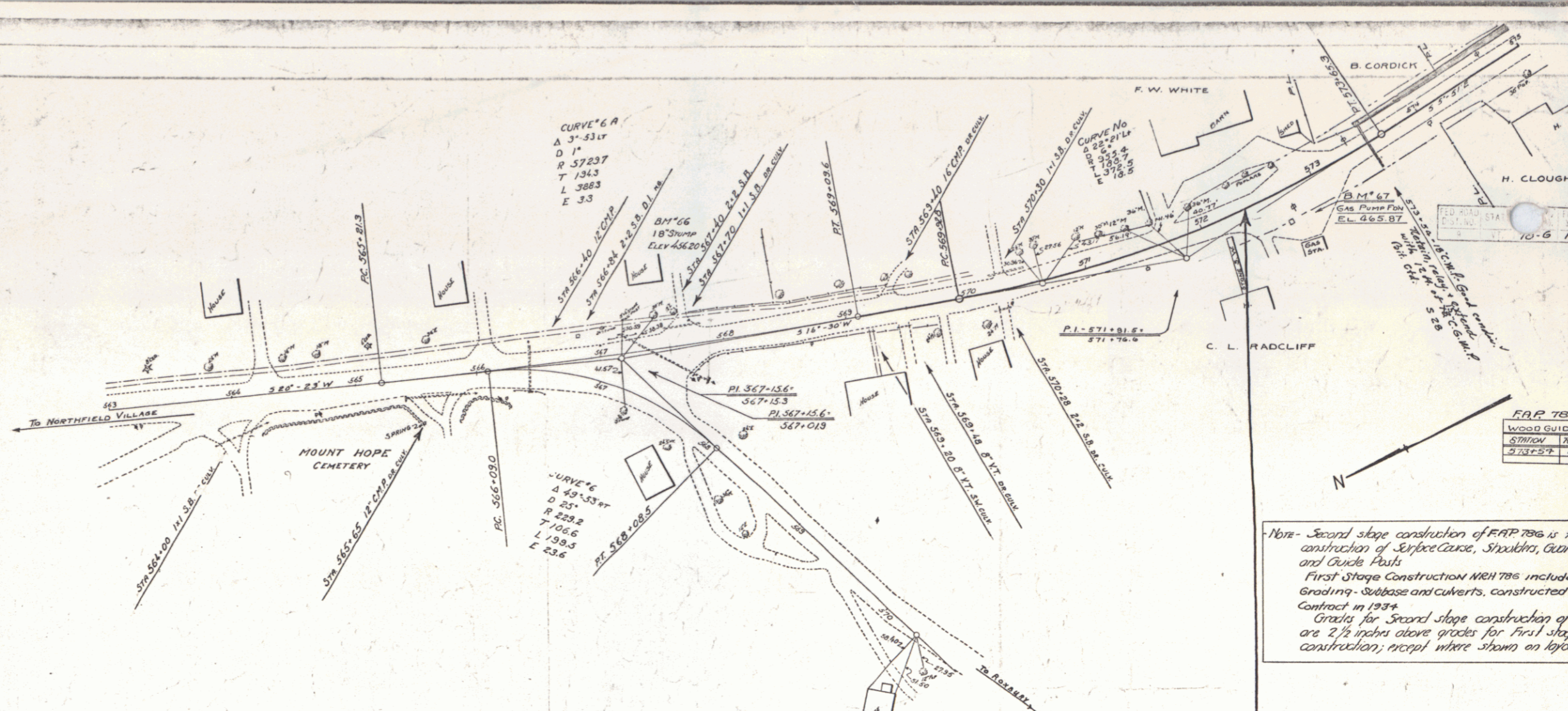


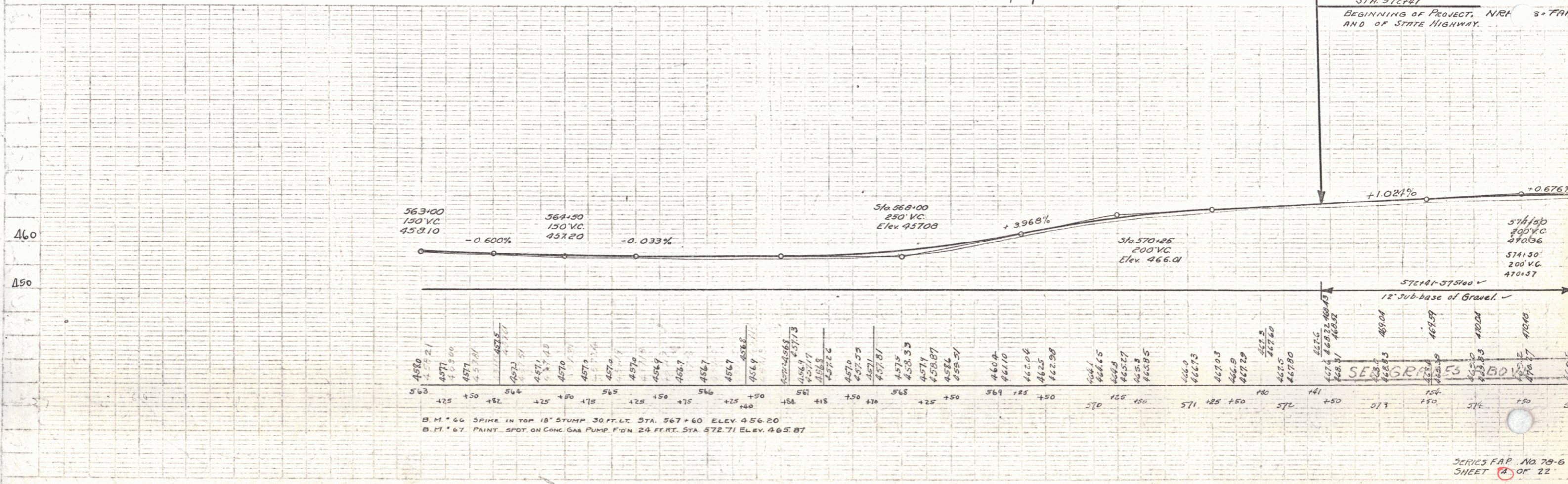
PLAN	Vertical
Scale	1" = 40'
North	As Shown
Drawn	J. H. [unclear]
Checked	[unclear]
Date	10-6-1934



FAP 786
WOOD GUIDE
STRONG 187
20422-7

Note - Second stage construction of FAP 786 is to include construction of surface course, sidewalks, curbs and grade cuts.
 First Stage Construction work included grading, sub-base and culverts, constructed by Contract in 1934.
 Grades for second stage construction of are 2 1/2 inches above grades for first stage construction, except where shown on layouts.

STA 572+10
 BEGINNING OF PROJECT, N.H. 3-TAP
 AND OF STATE HIGHWAY.



B. M. 66 SPIKE IN TOP 18" STUMP 30 FT. LT. STA. 567+60 ELEV. 456.20
 B. M. 67 PAINT SPOT ON CONC. GAS PUMP F'GN. 24 FEET. STA. 572+71 ELEV. 465.87

SERIES FAP No. 78-6
 SHEET 2 OF 22